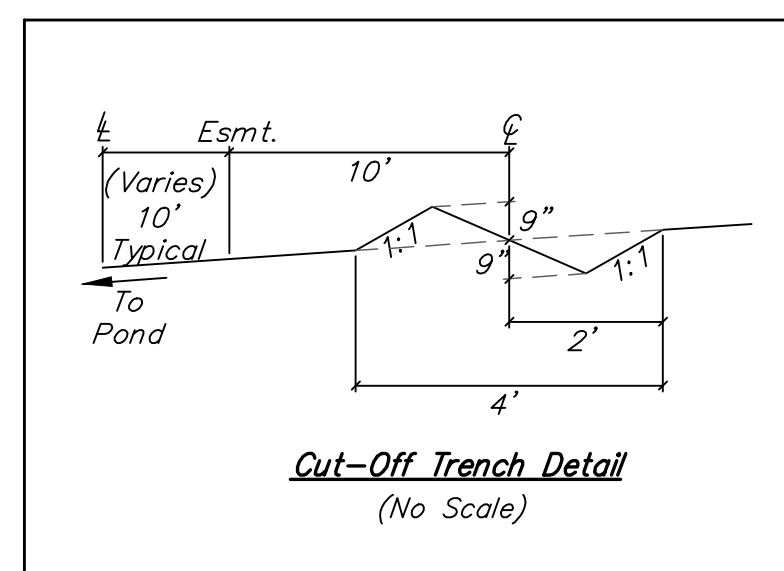
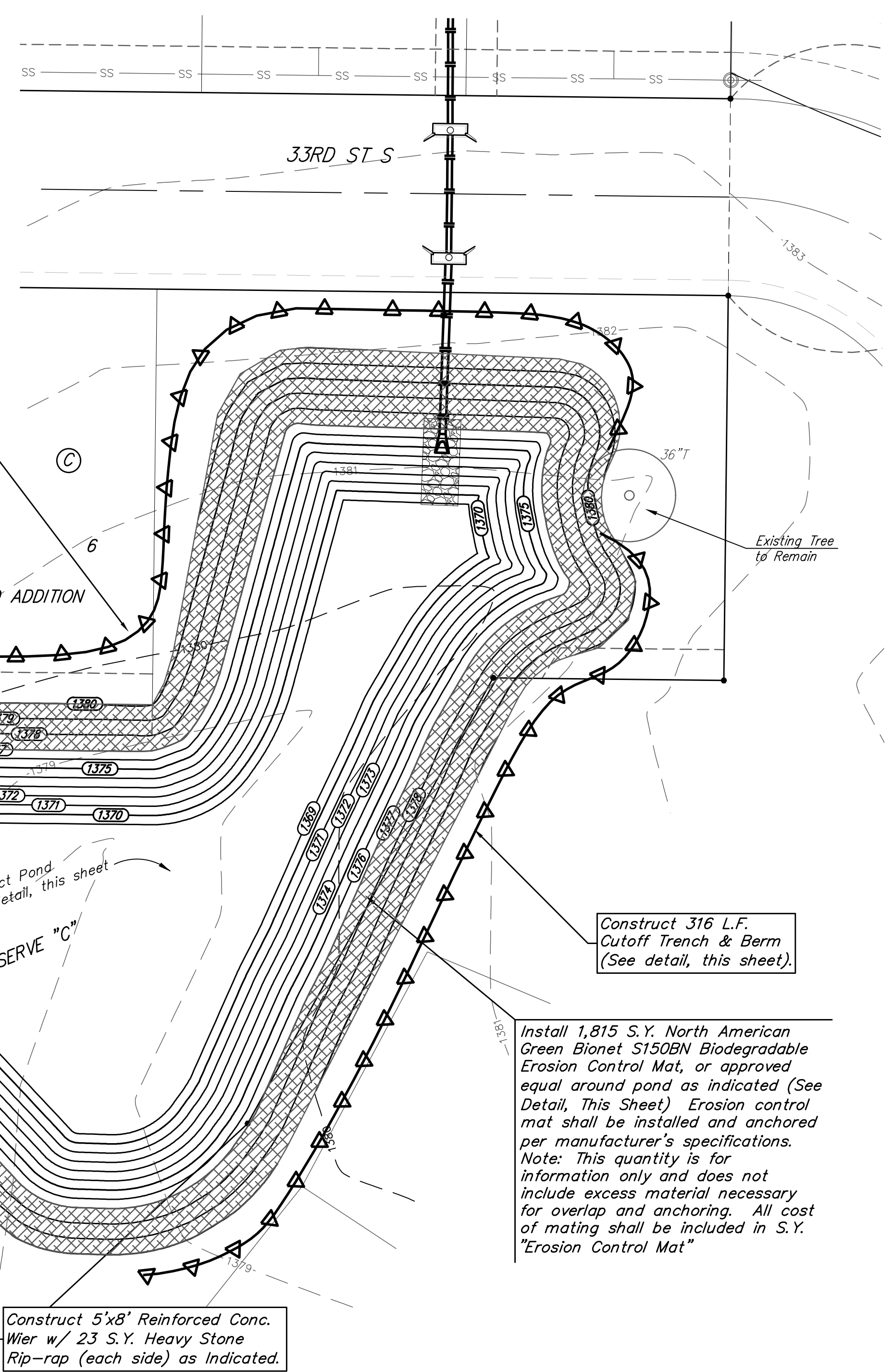
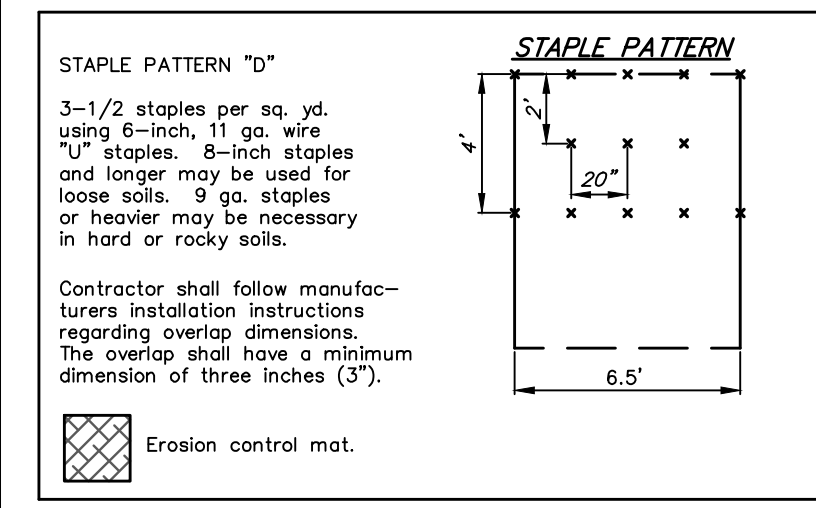
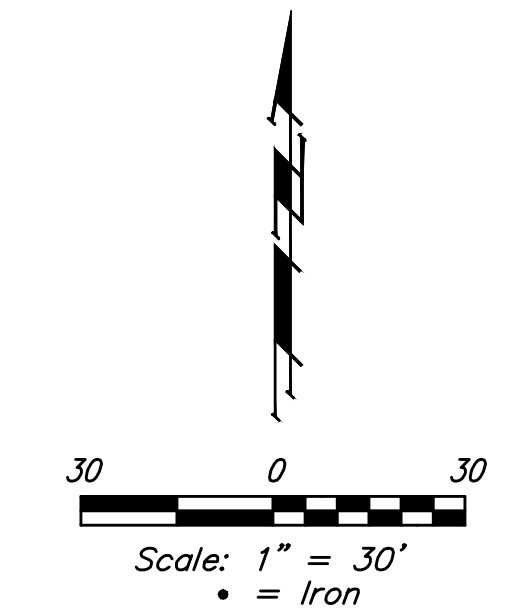
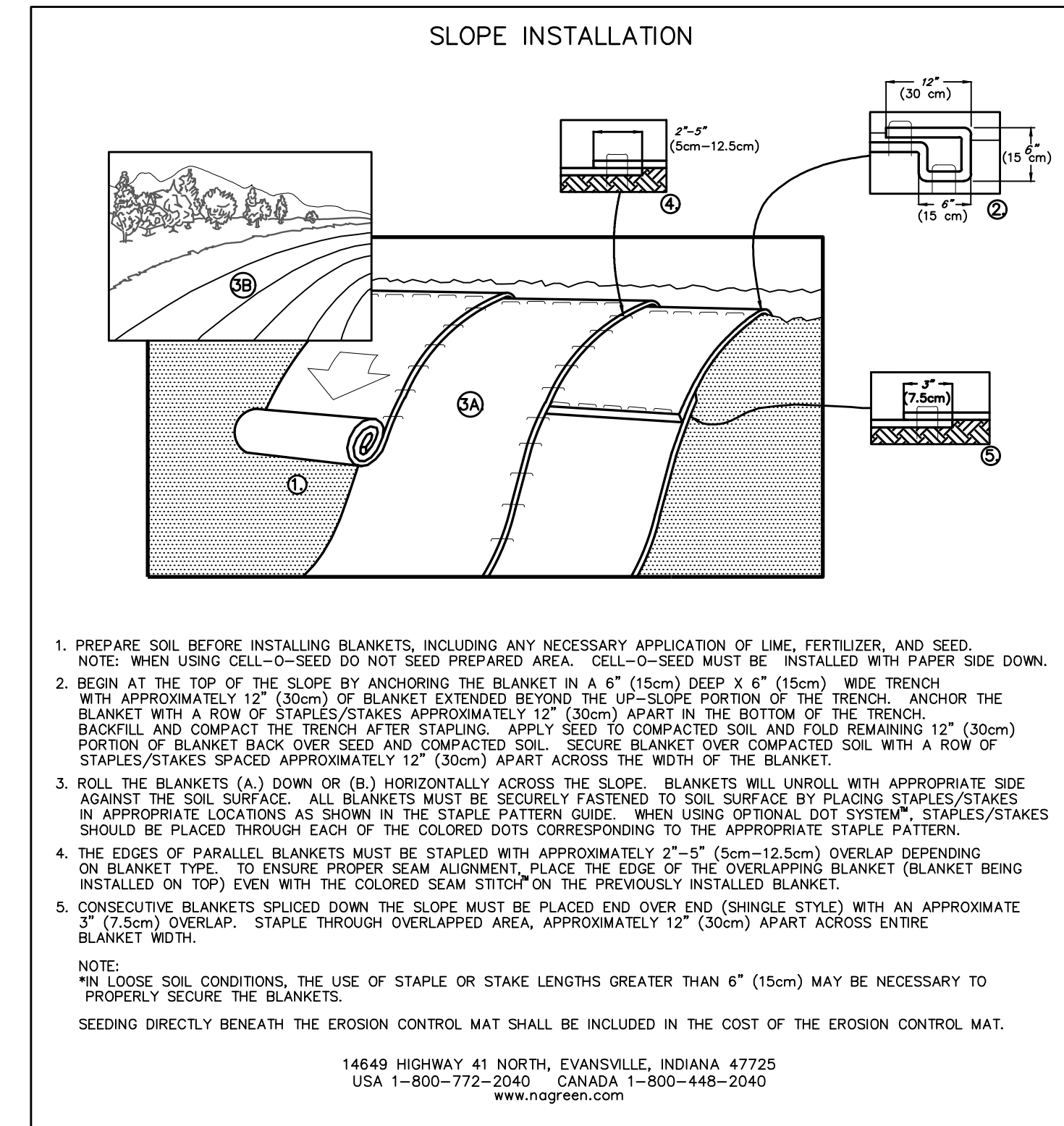
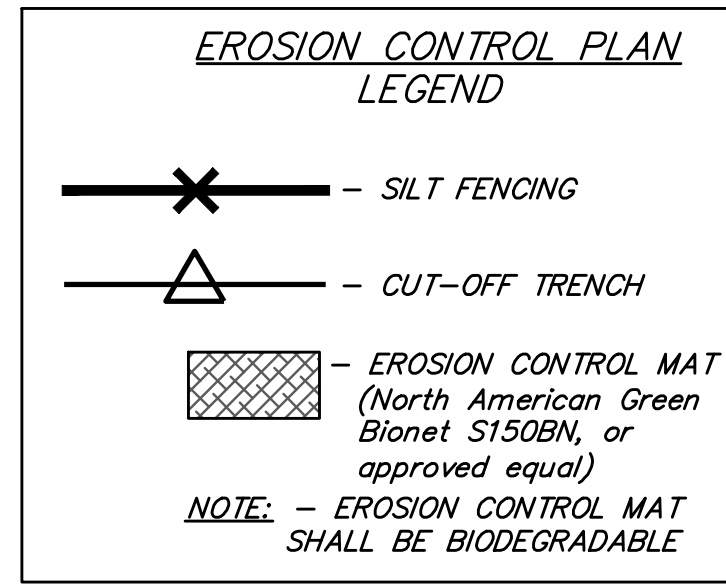
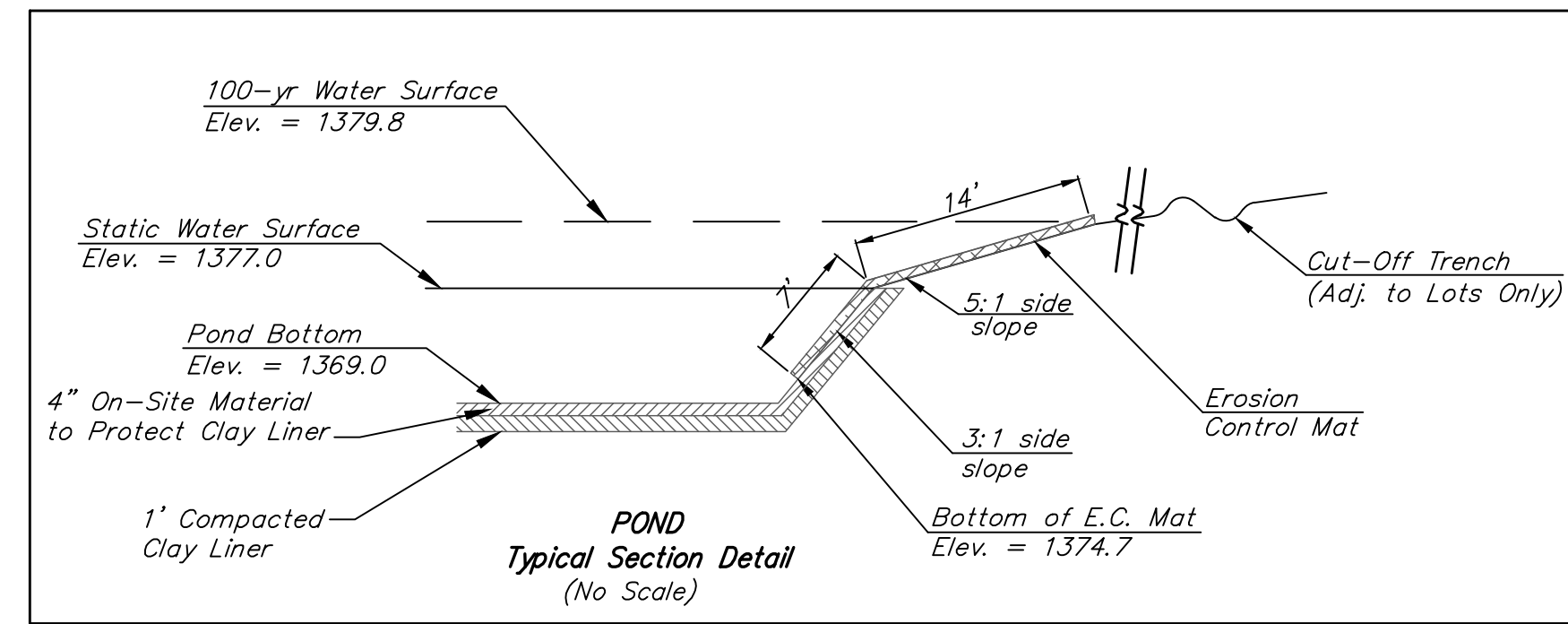


BENCHMARK:
 City of Wichita Benchmark Disk at
 South End of Hubguard on the SW
 Cor. of R.C.B.C., West Side of Rock
 Road, 706' North-northwest of the
 Northwest Corner of Lot 44, Block
 A, Rocky Ford Addition.
 Elev. = 1368.14 NAVD88

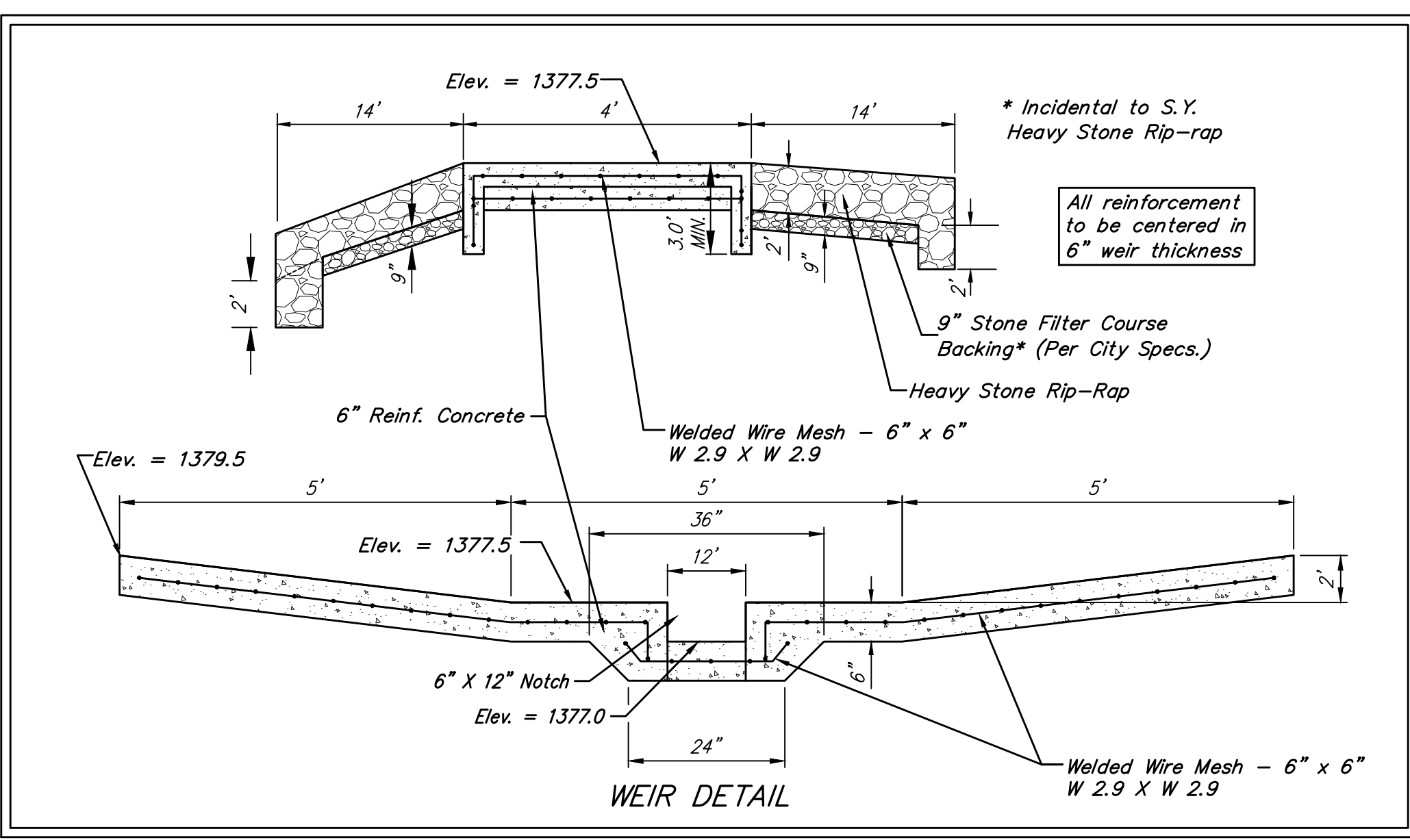


EARTH WORK TOTALS (Unadjusted)
 (for information only)

	C.Y. Cut	C.Y. Fill
Mass Grading	23,807	40,243
North Pond	9,830	103
South Pond	18,969	41
Res. "D" Pond	1,640	84
Total Earthwork	54,246	40,471

Earthwork quantities are for reference only. All cost associated with earthwork shall be included in C.Y. "Excavation" & L.S. "Grading, Mass".

- POND NOTES:**
- Pond bottom and sideslopes below static pool elevation shall be over-excavated 1'-4" and a 1' clay liner shall be compacted to 95% std. density. The best on-site material shall be used for the pond liner. The compaction and P.I. shall be verified during construction. 4" of on-site material shall be distributed on top of the clay liner below the static pool elevation. P.I. determination and compaction testing shall be arranged and paid for by the Contractor at the request of the inspector. Cost shall be incidental to "Testing". Cost of over-excavation to install Clay Liner shall be incidental to bid item "Excavation".
 - All areas disturbed during construction shall be seeded, mulched, and fertilized as per Cover Sheet General Notes.
 - Install Biodegradable Erosion Control Mat (North American Green Bionet S150BN or approved equal) around pond as indicated.
 - Contractor to strip top 3" of soil where ponds are to be built in Reserve "C" and street R/W before mass grading and stockpile. Topsoil stockpile to be redistributed over Reserve "C" above water elevation prior to seeding (incidental to C.Y. "Unclassified Excavation").
 - Compaction of 95% shall be obtained in all street R/W's, 90% in all other areas.
 - Earthwork Quantities reflect the best available topography at time of design. The Contractor shall satisfy himself with the Earthwork Quantities associated with Bid Items "Excavation, Unclassified" & "Grading, Mass" prior to bidding. No additional payments or change orders for earthwork will be accepted.



Install 1,815 S.Y. North American Green Bionet S150BN Biodegradable Erosion Control Mat, or approved equal around pond as indicated (See Detail, This Sheet) Erosion control mat shall be installed and anchored per manufacturer's specifications. Note: This quantity is for information only and does not include excess material necessary for overlap and anchoring. All cost of matting shall be included in S.Y. "Erosion Control Mat"

Baughman Rocky Ford 2nd Addition
POND PLAN
 STORMWATER DRAIN #433

Baughman Company, P.A. 315 Ellis St. Wichita, KS 67211 P 316-262-7271 F 316-262-0149
 ENGINEERING | SURVEYING | PLANNING | LANDSCAPE ARCHITECTURE

PROJECT NUMBER 468-85285	DESIGN AEG	DRAWN JAK
REVISIONS:	APPROVED	DATE 5/01/18
	SCALE Noted	SHEET 9 OF 21

C:\Projects\Rocky Ford 2nd Addition_Engineering\SWD_17-12-E891\SWS Plans.dwg