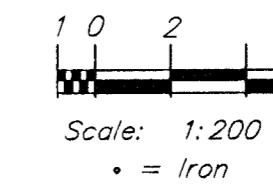
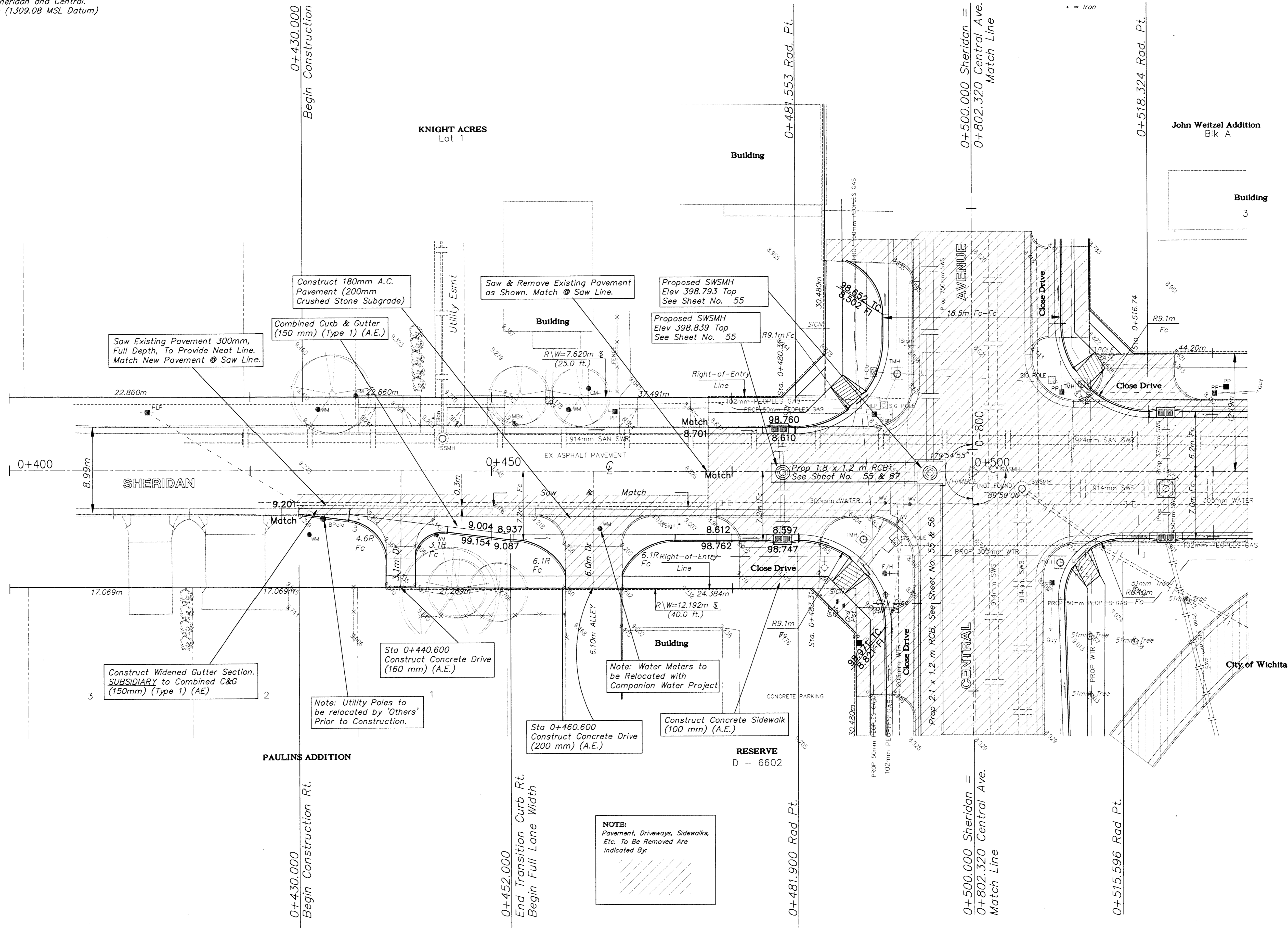


**BENCHMARKS**

BM #5 - City Disc Located @ 9.14m South and 12.8m East of the Centerline of both Sheridan and Central.  
Elev. = 399.012 SI Units (1309.08 MSL Datum)



FHWA REGION NO.	STATE	PROJECT NO.	FISCAL YEAR	SHEET NO.	TOTAL SHEETS
7	KANSAS	87N-0094-01	1998	28	202



Saw Existing Pavement 300mm, Full Depth, To Provide Neat Line. Match New Pavement @ Saw Line.

Construct 180mm A.C. Pavement (200mm Crushed Stone Subgrade)

Combined Curb & Gutter (150 mm) (Type 1) (A.E.)

Saw & Remove Existing Pavement as Shown. Match @ Saw Line.

Proposed SWSMH Elev 398.793 Top See Sheet No. 55

Proposed SWSMH Elev 398.839 Top See Sheet No. 55

Construct Widened Gutter Section. SUBSIDIARY to Combined C&G (150mm) (Type 1) (AE)

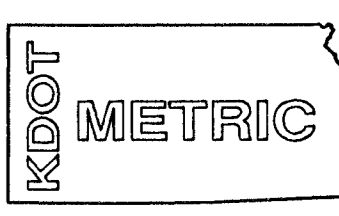
Sta 0+440.600 Construct Concrete Drive (160 mm) (A.E.)

Note: Utility Poles to be relocated by 'Others' Prior to Construction.

Sta 0+460.600 Construct Concrete Drive (200 mm) (A.E.)

Construct Concrete Sidewalk (100 mm) (A.E.)

NOTE: Pavement, Driveways, Sidewalks, Etc. To Be Removed Are Indicated By



PROJECT NUMBER 472 - 82908		PROJ NUMBER 95 05 E026	
DESIGN STAFF	DRAWN STAFF	APPROVED JFB	DATE NOV 98
SCALE NOTED		SHEET NAME PAV12	

CAPITAL IMPROVEMENT PROJECT  
**SHERIDAN**  
Sta 0+430.000 to Sta 0+500.000

**BAUGHMAN COMPANY P.A.**  
ENGINEERING, SURVEYING, & PLANNING  
316-282-7271 • 319 ELLIS • WICHITA, KANSAS 67211

SHEET  
28  
OF  
202