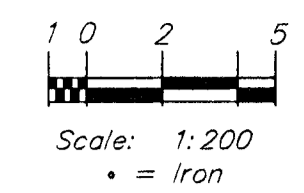
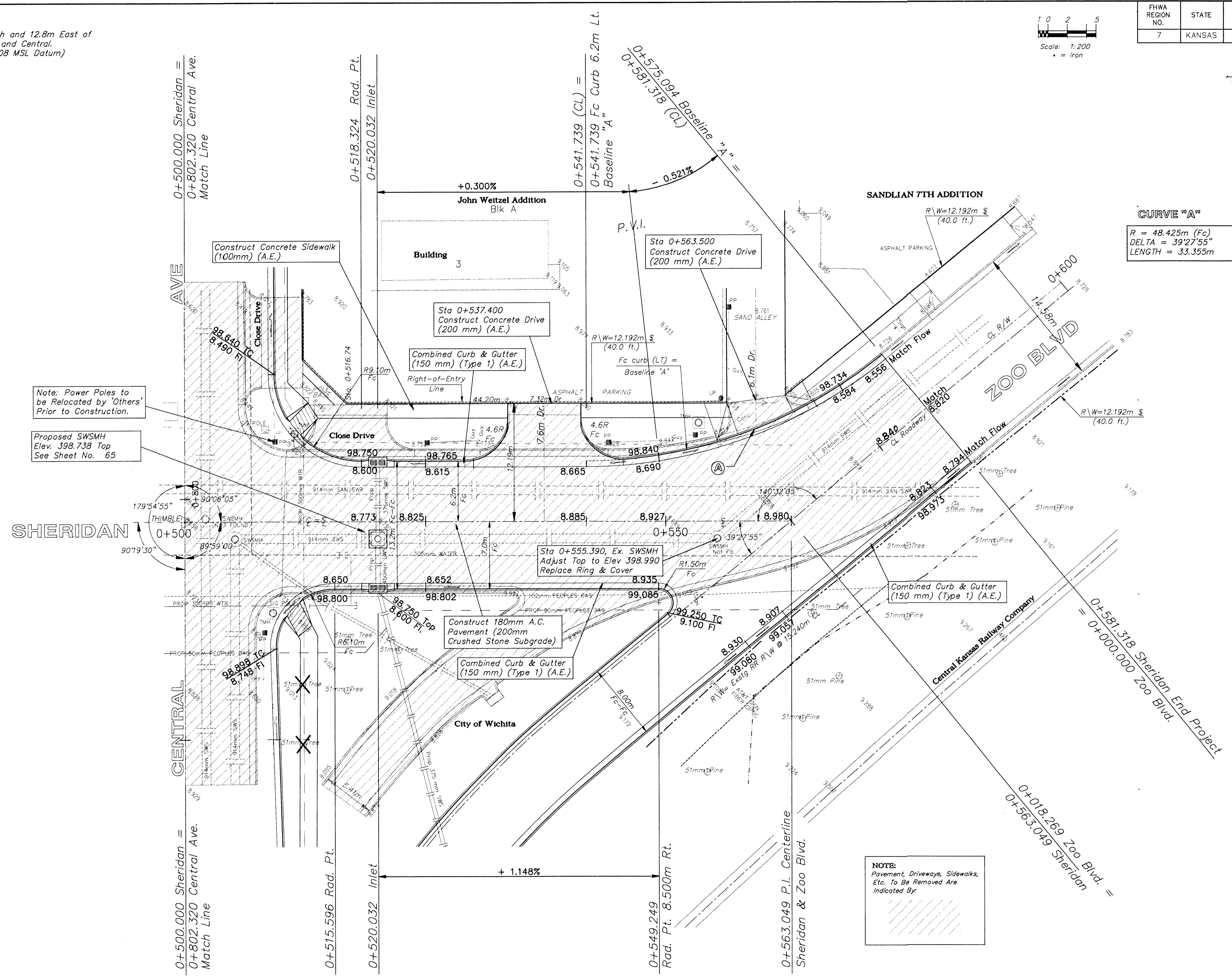


FHWA REGION NO.	STATE	PROJECT NO.	FISCAL YEAR	SHEET NO.	TOTAL SHEETS
7	KANSAS	87N-0094-01	1998	30	202



CURVE "A"
 $R = 48.425m (Fc)$
 $DELTA = 39^{\circ}27'55''$
 $LENGTH = 33.355m$

BENCHMARKS
 BM #5 - City Disc Located @ 9.14m South and 12.8m East of the Centerline of both Sheridan and Central.
 Elev. = 399.012 SI Units (1309.08 MSL Datum)



Note: Power Poles to be Relocated by 'Others' Prior to Construction.
 Proposed SWSMH Elev. 398.738 Top See Sheet No. 65

NOTE:
 Pavement, Driveways, Sidewalks, Etc. To Be Removed Are Indicated By:



PROJECT NUMBER 472 - 82908				
DESIGN STAFF	DRAWN STAFF	APPROVED JFB	DATE NOV 98	SCALE NOTED

PROJECT NUMBER
95 05 E026
 DIRECTOR
CENTZOO
 SHEET NAME
PAV13

CAPITAL IMPROVEMENT PROJECT
SHERIDAN
 Sta 0+500.000 to Sta 0+581.318

BAUGHMAN COMPANY P. A.
 ENGINEERING, SURVEYING, & PLANNING
 316-282-7271 • 315 ELLIS • WICHITA, KANSAS 67211

SHEET
OF
30
202