

J:\PROJECTS\2017\1701010567_COW_STRYKER_170567_CAD\SHS\505_OVAL\PAV\17567-05-0100.DWG
 PLOTTED: Wednesday, May 02, 2018 @ 02:27PM

PAVING, LANDSCAPE & UTILITIES FOR

STRYKER SPORTS

PHASE 6: PAVING, LANDSCAPE, & UTILITES

PROJECT NO. 1701010567

AN ADDITION TO THE CITY OF WICHITA, SEDGWICK COUNTY, KANSAS
 GARY JANZEN, P.E. - CITY ENGINEER

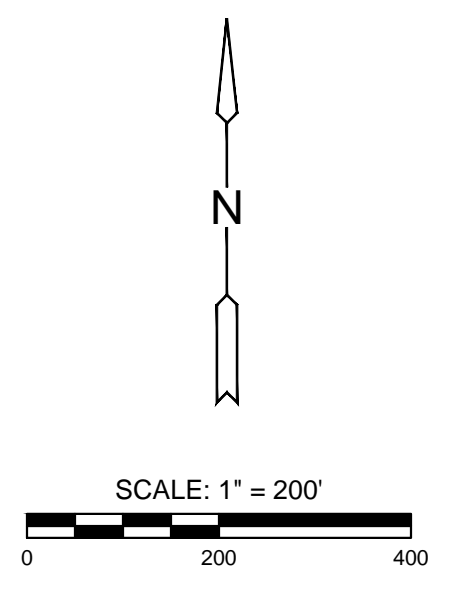
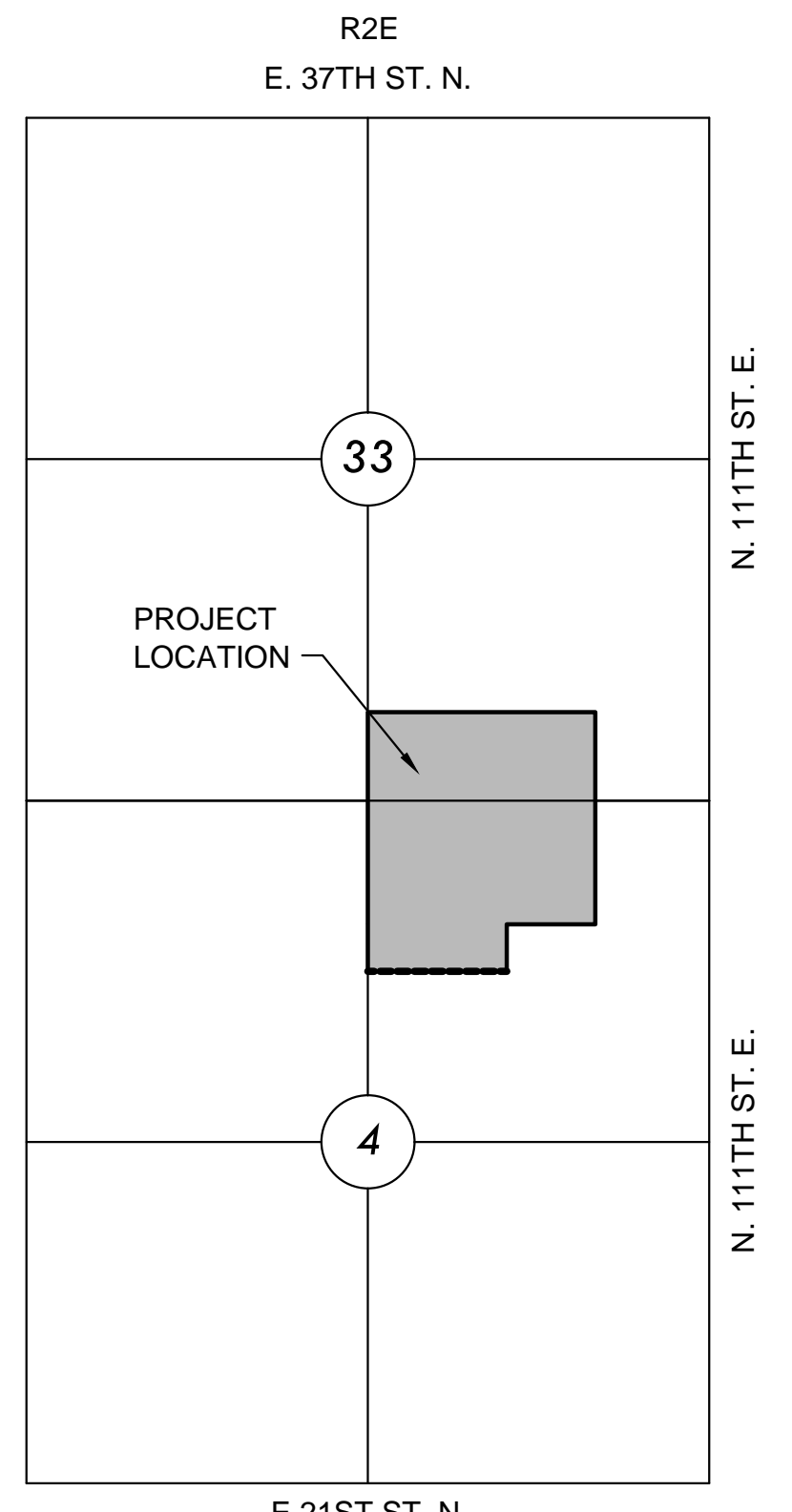
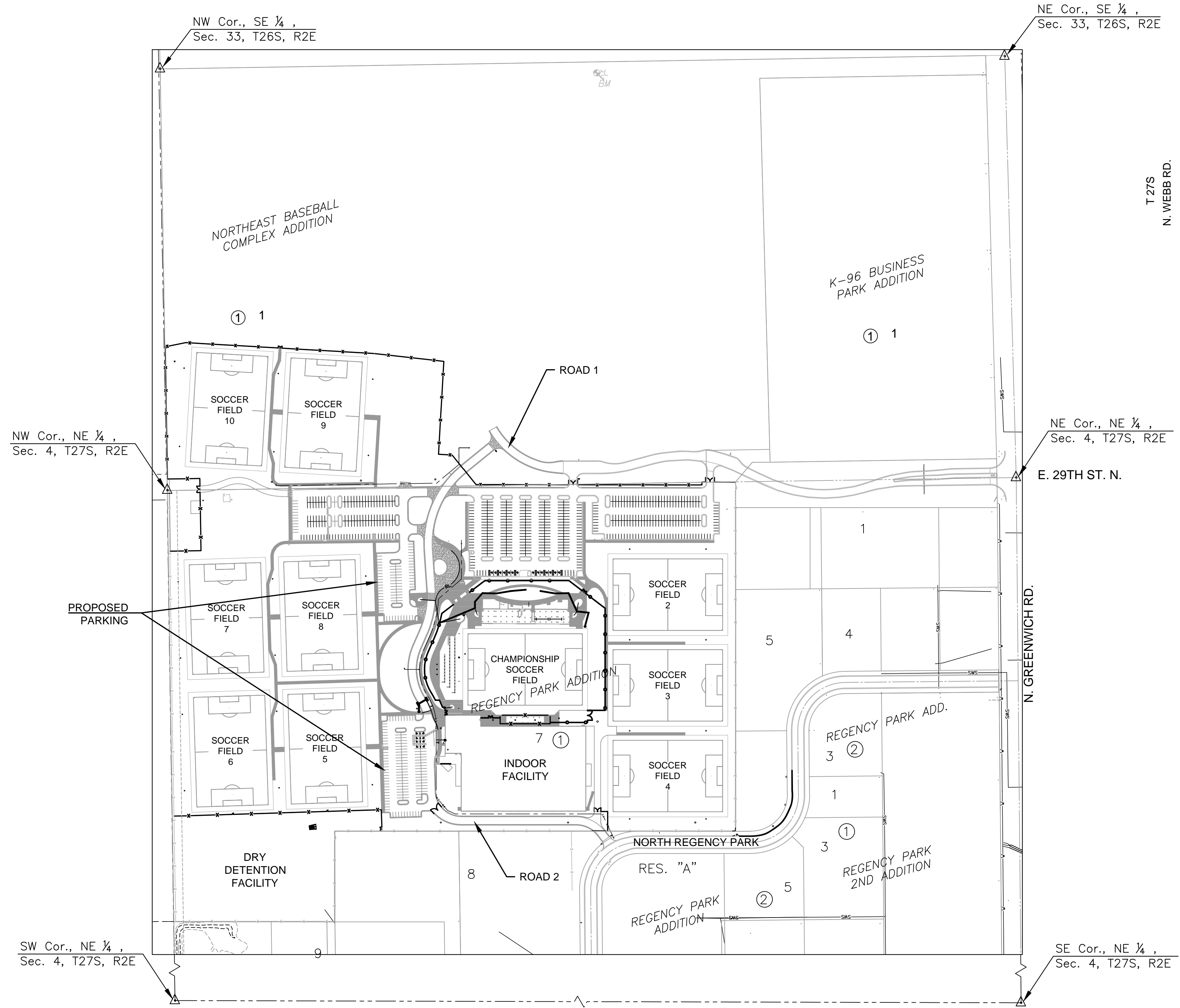
OCA NO. 607879

SHEET INDEX

| SHEET NO. | DESCRIPTION |
|-----------|-----------------------------------|
| 01 | TITLE SHEET |
| 02 | GENERAL NOTES |
| 03 | DEMOLITION PLAN |
| 04-08 | PAVING DETAILS |
| 09 | SIGN DETAIL |
| 10 | PAVING LAYOUT MAP |
| 11 | ROAD 1 |
| 12-15 | ROAD 2 |
| 16 | DROP OFF LANE |
| 17 | FIRE LANE |
| 18 | MAINTENANCE ACCESS |
| 19-21 | PARKING PLAN |
| 22 | JOINTING PLAN |
| 23 | DROP OFF LANE SPOT ELEVATIONS |
| 24-25 | GRADING PLAN |
| 26 | SITE PLAN LAYOUT MAP |
| 27-28 | FENCE & SIDEWALK DETAILS |
| 29-31 | HARDSCAPE DETAILS |
| 32-45 | SITE PLANS |
| 46 | STORM WATER SEWER LAYOUT MAP |
| 47 - 48 | STORM WATER SEWER DETAILS |
| 49 - 51 | STORM WATER SEWER PLAN & PROFILES |
| 52 | UNDERDRAIN SHEET |
| 53 - 63 | LANDSCAPE SHEETS |
| 64 | LANDSCAPE SCHEDULE |
| 65 | LANDSCAPE DETAILS |
| 66 | BUBBLE MAP |
| 67 | BUBBLE TABLES |
| 68 | EROSION CONTROL PLAN |
| 69 - 73 | BMPS |
| 74 - 76 | FOUNDATION PLANS |
| 77 | STRUCTURAL GENERAL NOTES |
| 78 - 79 | HARDSCAPE FOUNDATIONS |
| 80 - 81 | SITE SIGN FOUNDATIONS |
| 82 | ELECTRICAL COVERSHEET |
| 83 - 86 | ELECTRICAL SITE PLANS |
| 87-88 | ELECTRICAL DETAILS |
| 89 | ELECTRICAL SCHEDULES |
| 90-101 | IRRIGATION PLANS |
| 102 | IRRIGATION DETAILS |

REFERENCE PROJECTS

- PROJECT NO. 472-85380, PHASE 1
SYNTHETIC TURF INSTALLATION
- PROJECT NO. 472-85380, PHASE 2
MASS GRADING
WATER LINES
SANITARY SEWER LINES
STORM SEWER
ELECTRICAL CONDUIT
- PROJECT NO. 472-85380, PHASE 3, 4, & 5
PRE-ENGINEERED METAL BUILDING (PEMB)
INDOOR FACILITY BUILDING
STADIUM IMPROVEMENTS
TICKET BOOTHS



| EARTHWORK SUMMARY | |
|--|------------|
| EXCAVATION | 4,000 C.Y. |
| LOOSE FILL | 3800 C.Y. |
| EXCESS MATERIAL TO BE PLACED & COMPACTED ON SITE. LOCATION DETERMINED BY ENGINEER/OWNER'S DIRECTION | |



PAVING, LANDSCAPE & UTILITIES FOR
STRYKER SPORTS
 WICHITA, KANSAS



©2018 MKEC Engineering
 All Rights Reserved
 www.mkec.com
 These drawings and their contents, including, but not limited to, all concepts, designs, & ideas are the exclusive property of MKEC Engineering (MKEC), and may not be used or reproduced in any way without the express consent of MKEC.

TITLE SHEET

| | | |
|-------------|-------------------|----------|
| PROJECT NO. | 1701010567 | |
| DATE | MAY 2, 2018 | |
| SCALE | 1" = 200' | |
| DESIGNED | DRAWN | CHECKED |
| DFL | JWC | MAB |
| NO. | REVISION | DATE |
| 0 | ISSUED FOR CONST. | 05-02-18 |

SHEET NO.
01 OF 102