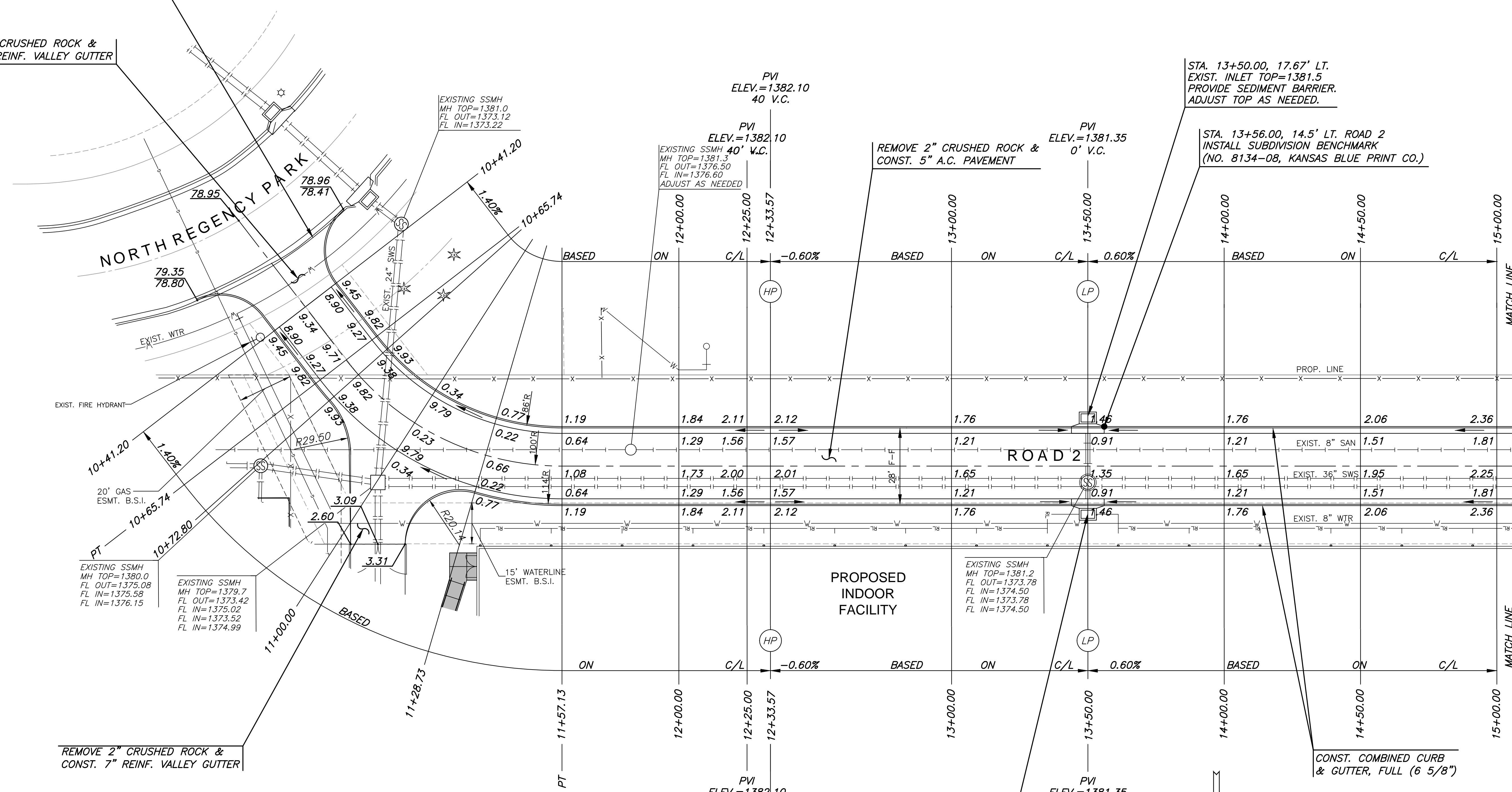


J:\PROJECTS\2017\171010567_COW_STRYKERL_170567_CAD\SH1505_CIVIL\PAV17567-05-6202.DWG
 PLOTTED: Wednesday, May 02, 2018 @ 02:31PM

EXISTING CURB REMOVED BY PREVIOUS PHASE. CONTRACTOR SHALL REPLACE PVMT. AND CURB TO THE NEAREST JOINT THAT HAS BEEN DAMAGED DUE TO CONSTRUCTION ACTIVITY, AS NEEDED

REMOVE 2" CRUSHED ROCK & CONST. 7" REINF. VALLEY GUTTER



REMOVE 2" CRUSHED ROCK & CONST. 7" REINF. VALLEY GUTTER

SUBDIVISION BENCH MARKS				
NO.	STREET AND STATION	FROM CL	DESCRIPTION	ELEVATIONS
1	ROAD 2, STA. 13+56.00	14.5' LT	TOP OF CURB AT W END OF INLET HOOKUP	

- NOTE:
- CONTRACTOR SHALL INSTALL SUBDIVISION BENCH MARKS ("FLAT SURVEY MARKERS NO. 8134-08 3" TOP DIAMETER" PROVIDED BY KANSAS BLUE PRINT CO., INC.) COSTS TO BE CONSIDERED SUBSIDIARY TO CONSTRUCTION OF COMBINED CURB AND GUTTER.
 - CONTRACTOR TO REPAIR DAMAGED CRUSHED ROCK BASE DURING CONSTRUCTION.
 - STA. 10+19.36 TO STA. 19+25.00 - REMOVE 2" OF CRUSHED ROCK BASE AND SPREAD EVENLY IN MAINTENANCE AREA

STA. 13+50.00, 17.67' LT.
EXIST. INLET TOP=1381.5
PROVIDE SEDIMENT BARRIER.
ADJUST TOP AS NEEDED.

STA. 13+56.00, 14.5' LT. ROAD 2
INSTALL SUBDIVISION BENCHMARK
(NO. 8134-08, KANSAS BLUE PRINT CO.)

REMOVE 2" CRUSHED ROCK & CONST. 5" A.C. PAVEMENT

STA. 13+50.00, 17.67' RT.
EXIST. INLET TOP=1337.55
PROVIDE SEDIMENT BARRIER.
ADJUST TOP AS NEEDED.



PAVING, LANDSCAPE & UTILITIES FOR
STRYKER SPORTS
 WICHITA, KANSAS



©2018 MKEC Engineering All Rights Reserved
 These drawings and their contents, including, but not limited to, all concepts, designs, & ideas are the exclusive property of MKEC Engineering (MKEC), and may not be used or reproduced in any way without the express consent of MKEC.

ROAD 2
10+00 - 15+00

PROJECT NO.	1701010567
DATE	MAY 2, 2018
SCALE	1" = 20'
DESIGNED	DFL
DRAWN	RWB
CHECKED	MAB

ISSUED FOR CONST.	05-02-18	
NO.	REVISION	DATE

SHEET NO.
12 OF 102

LEGEND
 + STREET SIGN & SIGN LOCATION (SEE SIGN ASSEMBLY TABLE FOR TYPE & STATION OF SIGN)

NOTE:
TOP OF CURB ELEVATIONS SHOWN ARE FOR FULL CURB. CONSTRUCT CURB AND GUTTER AS NOTED.

