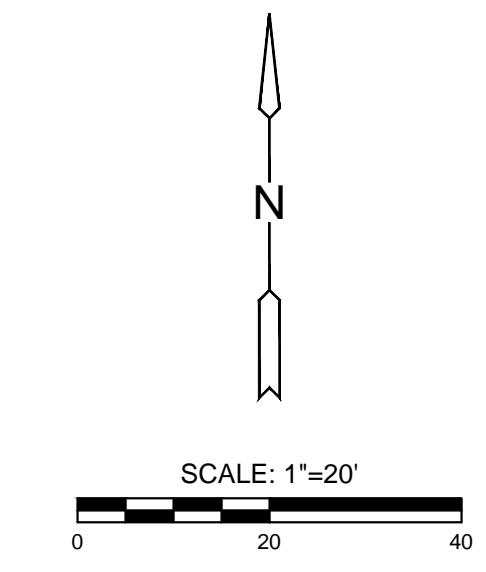
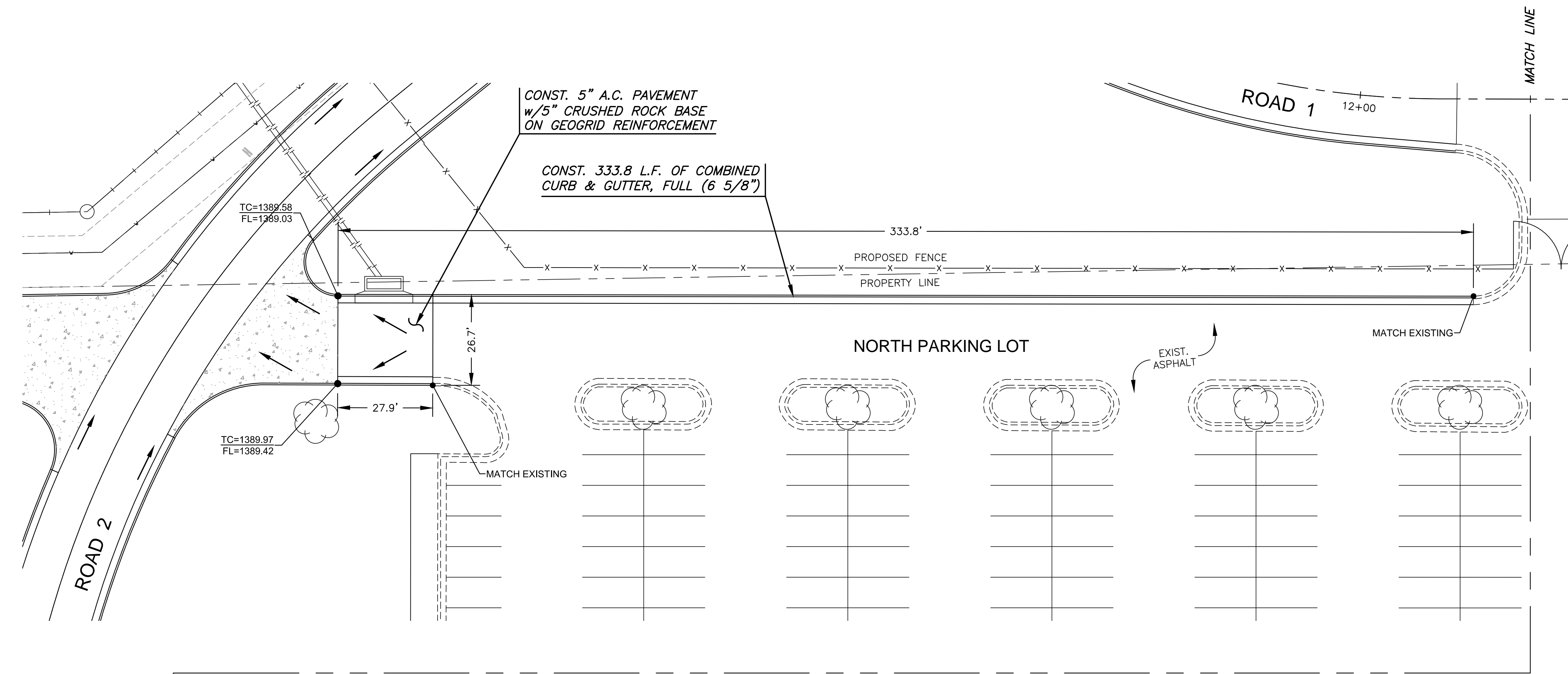


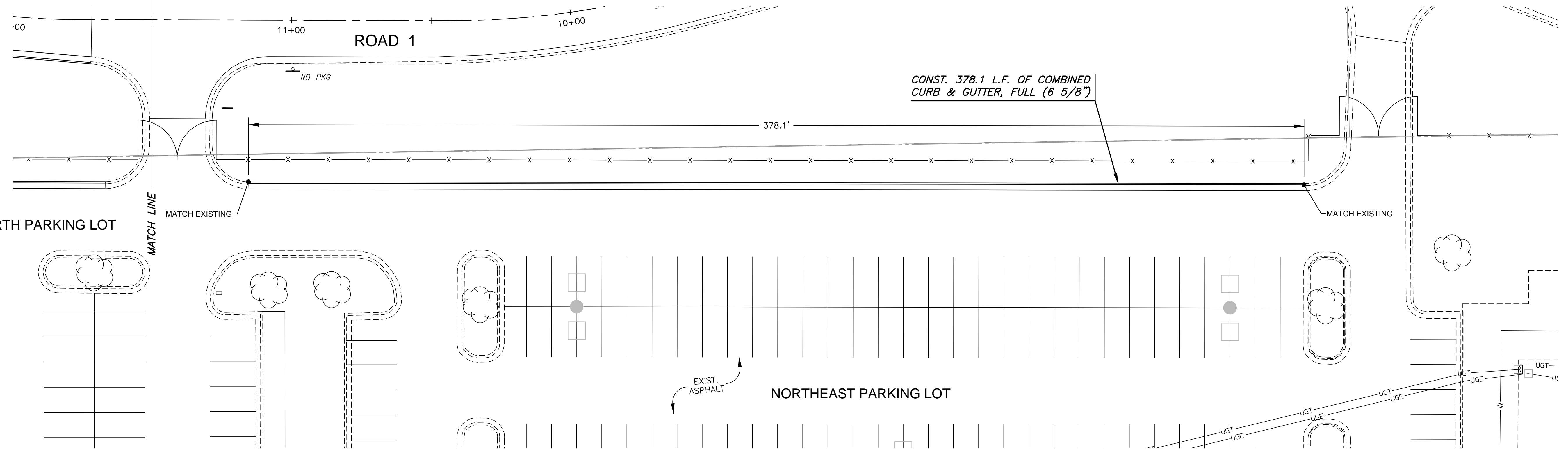
PLOTTED: Wednesday, May 02, 2018 @ 02:45PM

J:\PROJECTS\2017\1701010567_COW_STRYKER_KA_170567_CAD\SH1505_CIVIL\PAV\17567-05-5206.DWG



UTILITIES LEGEND

- X-X- PROPOSED FENCE
- TV- EXISTING UNDERGROUND TELEVISION
- OHE- OVERHEAD ELECTRIC
- FOC- FIBER OPTIC CABLE
- W- WATERLINE
- UGT- UNDERGROUND TELEPHONE
- UGE- UNDERGROUND ELECTRICAL
- G- UNDERGROUND GAS
- SS- SANITARY SEWER
- SSW- STORMWATER SEWER



PAVING, LANDSCAPE & UTILITIES FOR
STRYKER SPORTS
WICHITA, KANSAS



©2018 MKEC Engineering All Rights Reserved
www.mkec.com
These drawings and their contents, including, but not limited to, all concepts, designs, & ideas are the exclusive property of MKEC Engineering (MKEC), and may not be used or reproduced in any way without the express consent of MKEC.

NORTH & NORTHEAST PARKING PLAN

PROJECT NO.	1701010567
DATE	MAY 2, 2018
SCALE	1" = 20'
DESIGNED	ABC
DRAWN	ABC
CHECKED	ABC

NO.	REVISION	DATE

SHEET NO.
21 OF 102