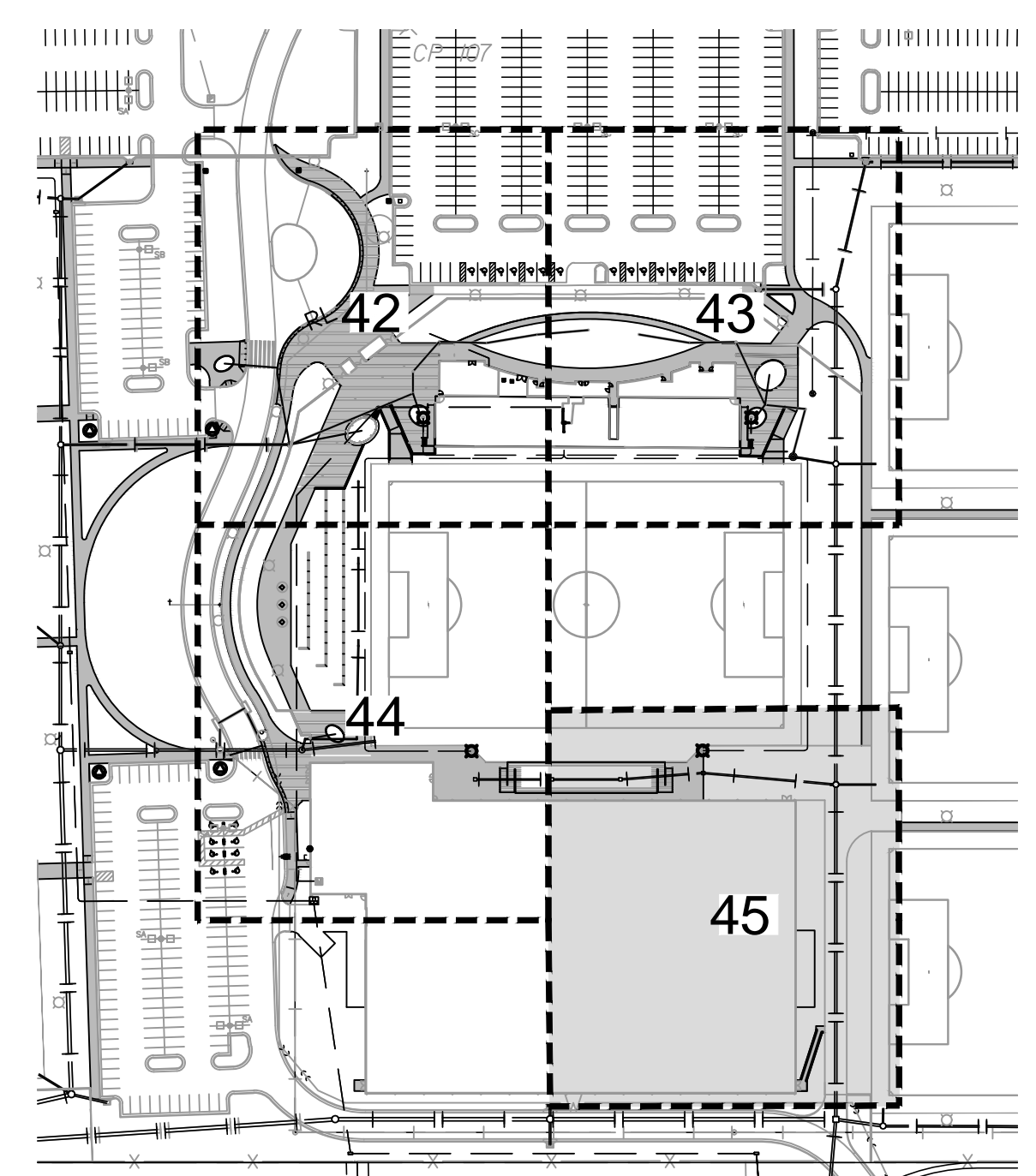
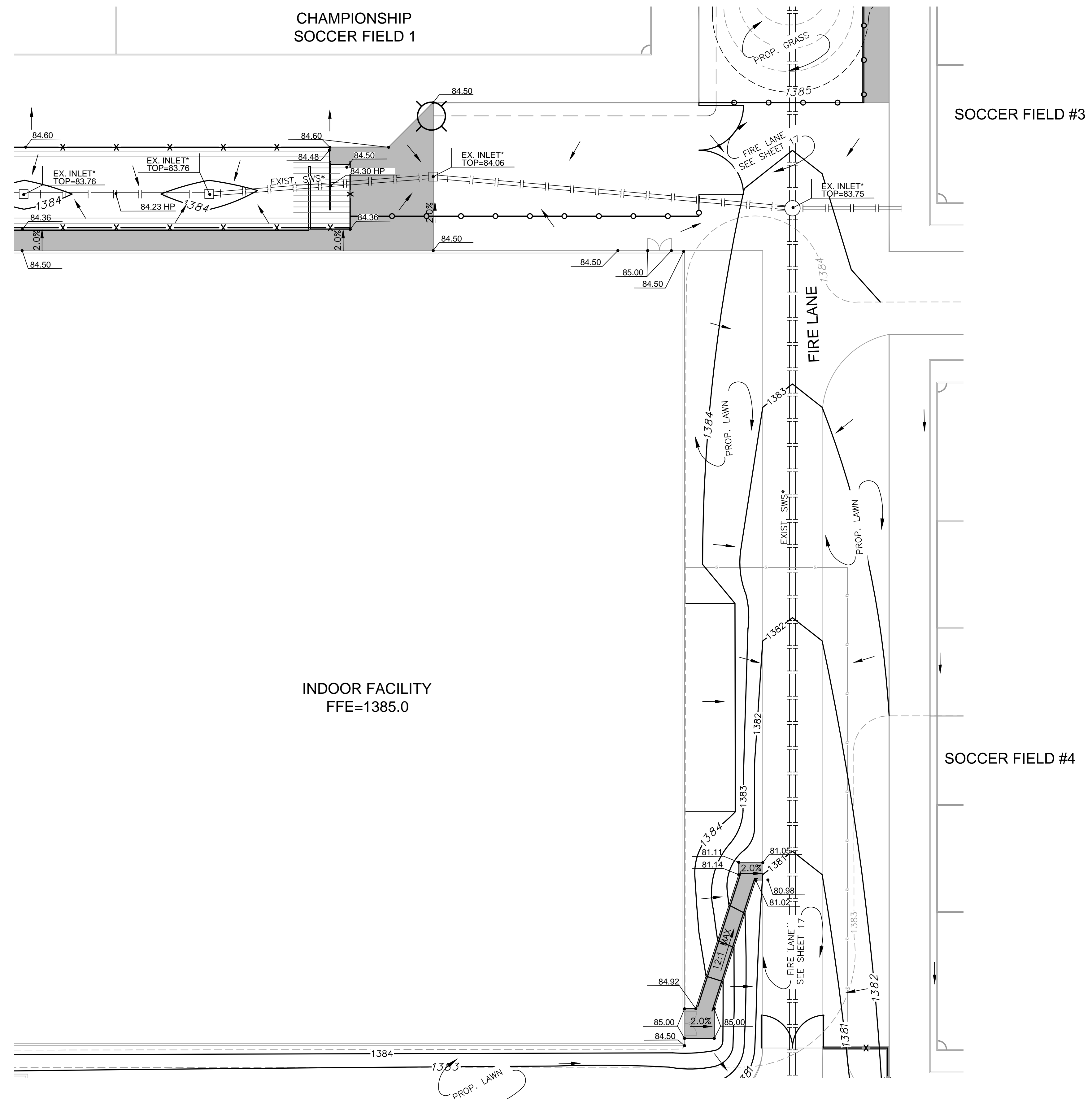


PLOTTED: Wednesday, May 02, 2018 @ 02:05PM

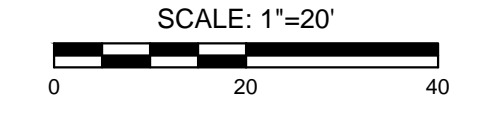
J:\PROJECTS\2017\1701010567_COW_STRYKER_170567_CAD\SH1505_OVALPAV\SIDEWALK_AND_FENCING\170567_05_1201.DWG



LOCATION MAP

LEGEND

- — — — — EXISTING SANITARY SEWER
- G — — — — — EXISTING GAS LINE
- W — — — — — EXISTING WATER LINE
- — — — — EXISTING STORM SEWER
- ○ — — — — — PROPOSED STORM SEWER
- RL — — — — — PROPOSED UNDERDRAIN
- E — — — — — PROPOSED ELEC. CONDUIT (SCHEMATIC)
- XXXX — — — — — PROPOSED GRADES
- - - - - EXISTING GRADES
- — — — — GRADING LIMITS
- ○ — — — — — ORNAMENTAL FENCE
- X — — — — — CHAINLINK FENCE
- 0.8% — — — — — SLOPE ARROW
- 29.50 — — — — — SPOT ELEVATION
- ○ — — — — — PROP. PICNIC TABLE
- ○ — — — — — PROP. TRASH RECEPTACLE
- ◇ — — — — — PROP. FLAGPOLE



PAVING, LANDSCAPE & UTILITIES FOR
STRYKER SPORTS
 WICHITA, KANSAS



©2018 MKEC Engineering All Rights Reserved www.mkec.com
 These drawings and their contents, including, but not limited to, all concepts, designs, & ideas are the exclusive property of MKEC Engineering (MKEC), and may not be used or reproduced in any way without the express consent of MKEC.

SITE PLAN 45

PROJECT NO.	1701010567	
DATE	MAY 2, 2018	
SCALE	1" = 20'	
DESIGNED	DRAWN	CHECKED
JAG	CRM	MAB

NO.	REVISION	DATE
0	ISSUED FOR CONST.	05-02-18

SHEET NO.
 45 OF 102