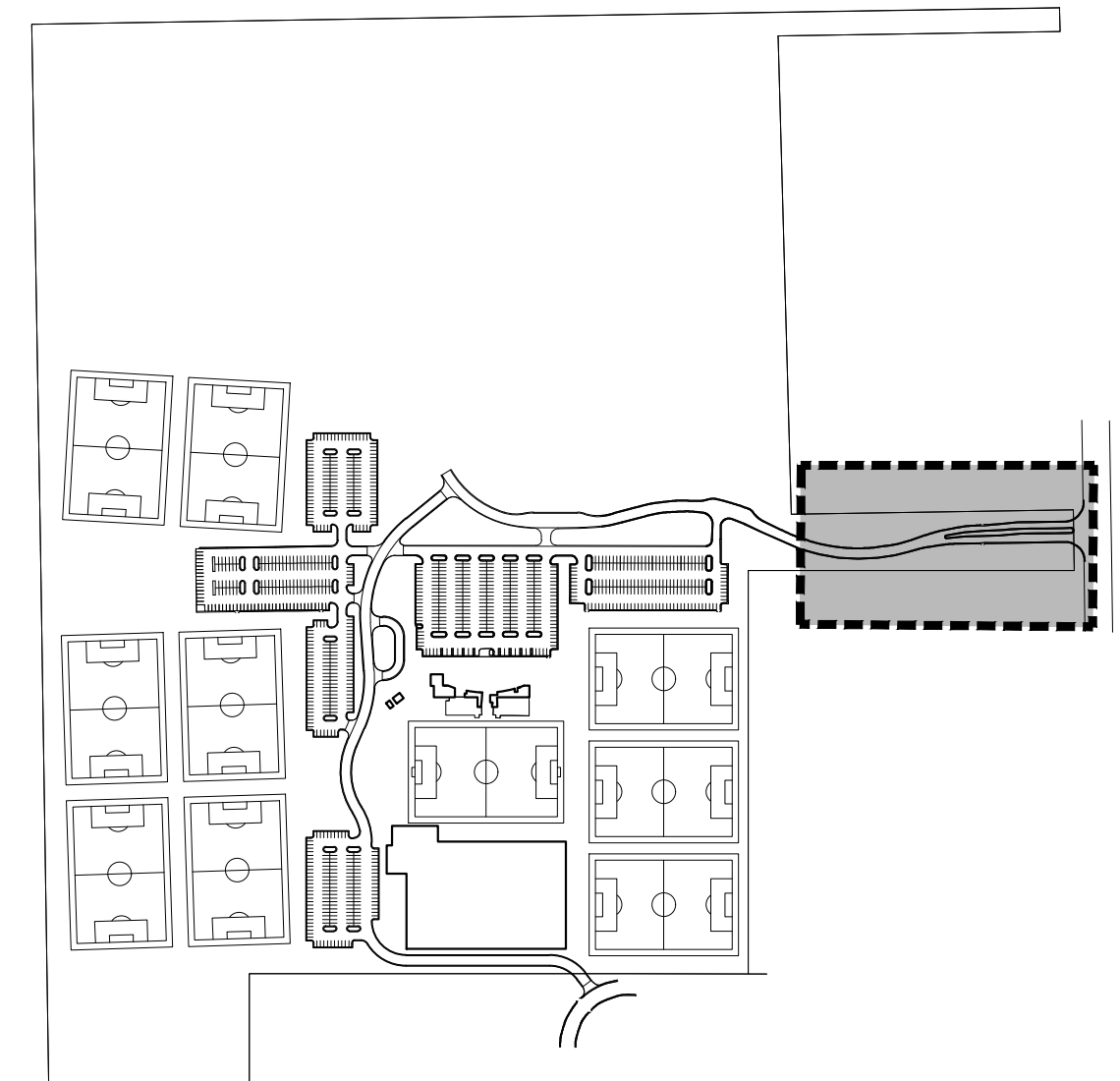
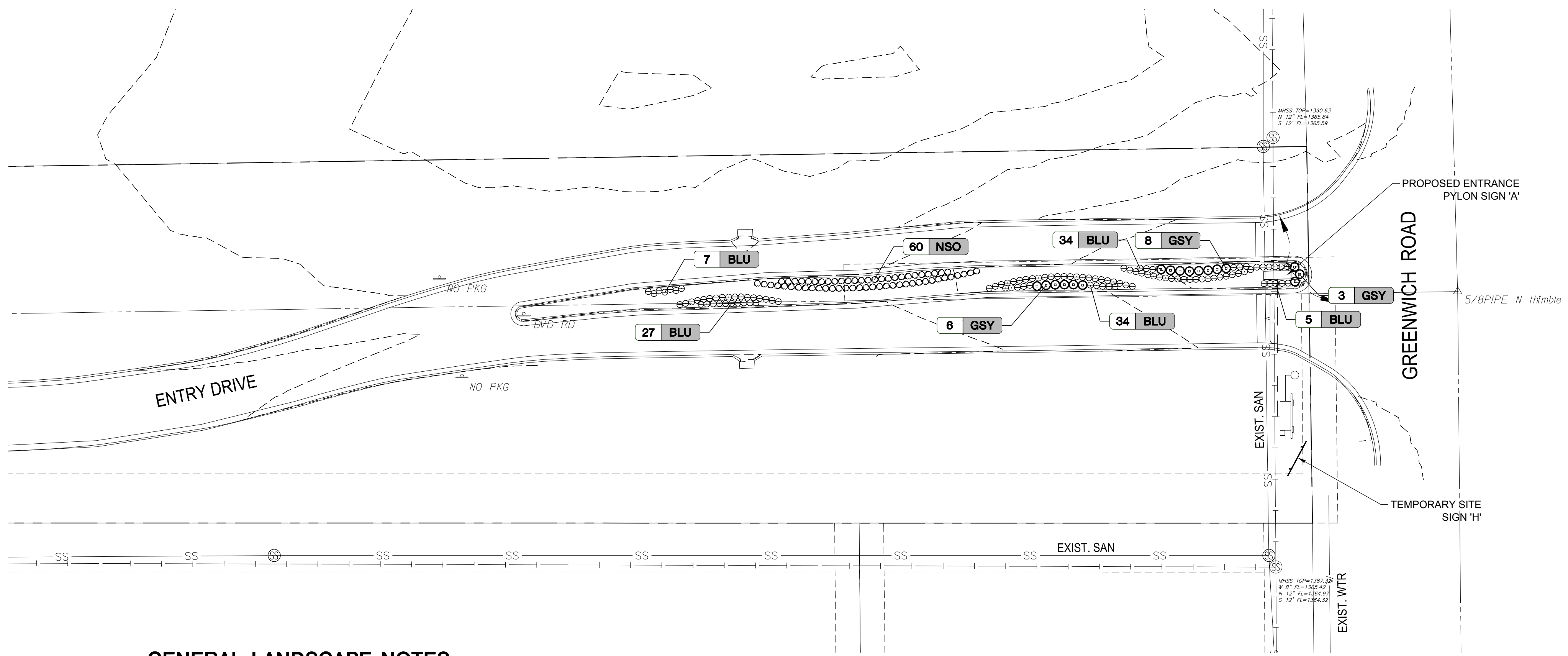


PLOTTED: Wednesday, May 02, 2018 @ 01:46PM
 J:\PROJECTS\2017\1701010567_COW_STRYKER_170567_CAD\SHIT\505_OVAL\LANDSCAPE\170567-05-7000.DWG



LOCATION MAP

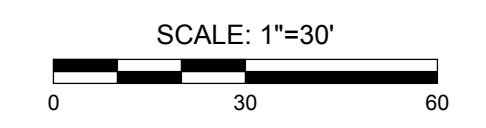
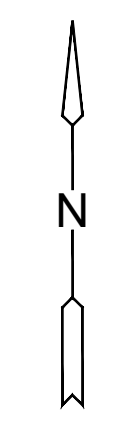
GENERAL LANDSCAPE NOTES

- CONTRACTOR SHALL MAKE THEMSELVES FAMILIAR WITH ALL APPLICABLE SPECIFICATIONS RELATED TO THE LANDSCAPE AND IRRIGATION. LANDSCAPE AND IRRIGATION SHALL BE INSTALLED PER CITY OF WICHITA SPECIFICATIONS. IN THE EVENT THESE PLANS OR NOTES ARE IN DISCREPANCY WITH THE CITY OF WICHITA SPECIFICATIONS, THE PLANS AND NOTES SHALL GOVERN.
- LANDSCAPE CONTRACTOR IS TO VERIFY THE LOCATION OF ALL UNDERGROUND UTILITIES (INCLUDING THOSE INDICATED ON THE PLAN) PRIOR TO INSTALLATION OF PLANT MATERIAL. UTILITIES CAN BE FLAGGED BY CALLING 811, OR 1-800-344-7233, OR ONLINE AT www.kansasonecall.com. DAMAGE TO UTILITIES SHALL BE AVOIDED DURING THE COURSE OF WORK. THE LANDSCAPE CONTRACTOR IS RESPONSIBLE FOR REPAIRING ANY AND ALL DAMAGE TO UTILITIES, STRUCTURES, SITE APPURTENANCES, ETC. WHICH OCCUR AS A RESULT OF THE LANDSCAPE CONSTRUCTION.
- LANDSCAPE CONTRACTOR SHALL COORDINATE WITH THE MASS GRADING CONTRACTOR TO INSURE THEY THOROUGHLY RIP AND ALLEVIATE ALL COMPACTED SOILS FROM THEIR HAULING AND PLACEMENT OPERATIONS.
- ALL WATER REQUIRED FOR LANDSCAPE OPERATIONS AND FOR ESTABLISHING LANDSCAPE ON THIS SITE WILL BE PROVIDED BY THE OWNER FROM ON-SITE SOURCES AND SUPPLIED TO THE LANDSCAPE CONTRACTOR AT NO CHARGE.
- PLANTING DATES FOR PLANT MATERIAL SHALL BE DURING THE MONTHS BETWEEN FEB. 15TH AND MAY 31ST OR SEPT. 15TH AND DEC. 15. PLANTING SHALL ONLY BE CONDUCTED WHEN THE GROUND IS NOT FROZEN, SNOW-COVERED, OR IN AN OTHERWISE UNSUITABLE CONDITION FOR PLANTING. DEVIATION FROM THE ABOVE PLANTING DATES WILL ONLY BE PERMITTED WITH APPROVAL FROM THE OWNER'S REPRESENTATIVE.
- MULCHED LANDSCAPE BED EDGES, WHERE NOT ADJACENT TO HARDSCAPE, SHALL BE LINED WITH PRO-STEEL EDGING (OR APPROVED EQUAL).
- MULCH ADJACENT TO BUILDINGS SHALL BE SIX (6) INCHES LOWER THAN BUILDING FINISH FLOOR ELEVATION (EXCEPTION NEAR ENTRY DOORS)
- CONTRACTOR SHALL SPREAD "BACK TO EARTH" COTTON BURR COMPOST, OR APPROVED EQUAL, TO A DEPTH OF 1" AND TILL THOROUGHLY INTO THE TOP 6 INCHES OF TOPSOIL WITHIN ALL PLANTING BEDS. COST SHALL BE SUBSIDIARY TO SOIL AMENDMENTS.
- ALL SHRUB/PERENNIAL PLANTING BEDS SHALL BE TREATED WITH A PRE-EMERGENT HERBICIDE SUCH AS TREFLAN OR EQUAL. APPLY AS PER MANUFACTURER'S RECOMMENDATION. THE PRE-EMERGENT SHALL NOT BE APPLIED UNTIL AFTER ALL PLANTING AND MULCHING WITHIN THESE AREAS ARE COMPLETE. DO NO DISTURB AREAS AFTER APPLICATION. WATER IN AS DIRECTED.
- INSTALL 6" MINIMUM DEPTH OF PINE STRAW MULCH IN ALL PLANTING BED AREAS AND WITHIN A 3' DIAMETER CIRCLE AROUND ALL TREES PLANTED IN LAWN AREAS. SUBMIT 1 CU/FT SAMPLE FOR APPROVAL. PULL MULCH AWAY FROM TREE TRUNKS WITHIN 3" OF TRUNK.
- IF POSSIBLE, BASED ON TIME OF YEAR SITE IS READY FOR LANDSCAPING, PLANT TREES PRIOR TO ROUTING/INSTALLING IRRIGATION LINES AND SUSTAIN TEMPORARILY BY WATERING WITH IRRI-"GATOR" SLOW DRIP IRRIGATION BAGS OR BY HAND WATERING. FOLLOW TREE PLANTING WITH INSTALLATION OF IRRIGATION SYSTEM, THEN BY SODDING AND SEEDING (IF APPLICABLE).
- FESCUE SOD SHALL BE HARVESTED & PLACED BETWEEN THE DATES OF APRIL 1ST AND JUNE 15TH UNLESS OTHERWISE APPROVED BY THE OWNER'S REPRESENTATIVE. IT IS THE CONTRACTOR'S RESPONSIBILITY TO WATER ALL SOD UNTIL LANDSCAPE JOB IS COMPLETE.

- AREAS DENOTED AS 'SOD' SHALL BE PLANTED WITH THE FOLLOWING GRASS TYPE:
SOD:
FESCUE/BLUE TURF MIXTURE, OBTAINABLE FROM CRANMER GRASS FARM, INC., 6121 N. 119TH, MAIZE, KANSAS 67101, PH# (316) 722-7230 OR APPROVED EQUAL.
- ALL SOD AREAS SHALL BE INSTALLED AS FOLLOWS: AFTER FINAL GRADE IS ESTABLISHED AND ALL SOIL AREAS DRAIN AS INTENDED, AND ALL SURFACE IRREGULARITIES HAVE BEEN REMOVED, THOROUGHLY PREPARE SODBED BY TILLING TO A MINIMUM DEPTH OF 3" AND HARROWING. ROLL SOD FOLLOWING LAYING FOR GOOD SOD/SOIL CONTACT AND KEEP IN A MOIST (BUT NOT SATURATED) CONDITION FOR FIRST TWO WEEKS TO PROMOTE GOOD ROOTING. FERTILIZE WITH 1 LB. ACTUAL NITROGEN PER 1,000 S.F. AT TIME OF PLANTING.
- ALL LANDSCAPE AREAS AND TURF SHALL BE WATERED BY AN AUTOMATIC IRRIGATION SYSTEM.
- COORDINATE LANDSCAPE PLANTING WITH IRRIGATION CONTRACTOR. THE TREE PLANTINGS SHALL BE IN PLACE OR STAKED BEFORE IRRIGATION LINE ROUTING BEGINS TO AVOID CONFLICTS. THE IRRIGATION SYSTEM SHALL BE COMPLETE AND FULLY FUNCTIONAL IN ALL LAWN AREAS BEFORE SOD/SEED IS PLACED.
- ALL PLANTS SHALL CONFORM TO ANSI Z60.1 FOR SIZE AND QUALITY STANDARDS.
- LABEL EACH PLANT WITH A SECURELY ATTACHED, WATERPROOF TAG BEARING LEGIBLE DESIGNATION OF BOTH BOTANICAL AND COMMON NAME. DO NOT REMOVE UNTIL AFTER PROVISIONAL ACCEPTANCE.
- SUBSTITUTION OF PLANT SPECIES FOR THOSE LISTED IN THE PLANT LIST IS NOT PERMISSIBLE. ONLY SIZE WILL BE CONSIDERED.
- ALL PLANTS MUST BE HEALTHY, VIGOROUS MATERIAL; FREE OF PEST AND DISEASES. ALL PLANTS MUST BE CONTAINER-GROWN OR BALLED AND BURLAPPED AS INDICATED IN THE PLANT LIST. ALL TREES SHALL BE STRAIGHT-TRUNKED, OR OF TYPICAL FORM TO THE SPECIES, FULL-HEADED AND MEET THE REQUIREMENTS AS SPECIFIED. ALL TREES MUST BE STAKED.
- STAKES AND GUYING SHALL BE REMOVED AT THE END OF ONE FULL GROWING SEASON.
- ALL PLANTS ARE SUBJECT TO THE APPROVAL OF THE LANDSCAPE ARCHITECT BEFORE, DURING, AND AFTER INSTALLATION. REJECTED PLANTS SHALL BE REMOVED IMMEDIATELY.
- ALL LANDSCAPE PLANTS SHALL BE GUARANTEED FOR ONE YEAR FOLLOWING INITIAL ACCEPTANCE. DEAD OR DEFICIENT PLANTINGS SHALL BE ACCEPTABLY REPLACED, IN PROPER PLANTING SEASON, ONE TIME AT NO COST TO THE OWNER. SOD AREAS MAY BE FINAL ACCEPTED AT TIME OF COMPLETION OF ESTABLISHMENT WITH NO FURTHER GUARANTEE REQUIRED.
- LANDSCAPE CONTRACTOR SHALL BE RESPONSIBLE FOR MAINTAINING, (INCLUDING WATERING AND MOWING), SOD AREAS UNTIL ACCEPTANCE OF THESE AREAS. WHEN READY, THE LANDSCAPE CONTRACTOR SHALL REQUEST INSPECTION OF ESTABLISHED SODDED AREAS BY THE OWNER'S REPRESENTATIVE.
- TOPSOIL FOR ALL LANDSCAPE BEDS AND PARKING ISLANDS SHALL BE A MINIMUM OF TWENTY-FOUR INCHES (24") DEPTH. SOD AND SEED AREAS SHALL BE SIX INCH (6") MINIMUM TOPSOIL DEPTH.
- AREAS DEPICTED AS COLORADO RIVER ROCK SHALL BE 6"-8" AVERAGE DIAMETER ROCK. PLACE MIRIFI FW402 FILTER FABRIC, OR APPROVED EQUAL, BELOW ROCK (COST SUBSIDIARY TO "ROCK MULCH" BID ITEM). SUBMIT RIVER ROCK SAMPLE FOR APPROVAL PRIOR TO PLACEMENT.

LEGEND

- FESCUE SOD
- FESCUE SEED
- NATIVE SEED MIX 1
- NATIVE SEED MIX 2
- EXISTING SANITARY SEWER
- EXISTING GAS LINE
- EXISTING WATER LINE
- EXISTING STORM SEWER
- PROPOSED STORM SEWER
- PROPOSED ELEC. CONDUIT
- PROPOSED CONTOURS
- EXISTING CONTOURS



PAVING, LANDSCAPE & UTILITIES FOR
STRYKER SPORTS
 WICHITA, KANSAS



©2018
 MKEC Engineering
 All Rights Reserved
 www.mkec.com
 These drawings and their contents, including, but not limited to, all concepts, designs, & ideas are the exclusive property of MKEC Engineering (MKEC), and may not be used or reproduced in any way without the express consent of MKEC.

LANDSCAPE SHEET 11

PROJECT NO.	1701010567	
DATE	MAY 2, 2018	
SCALE	1" = 30'	
DESIGNED	RKO	
DRAWN	RKO	
CHECKED	MAB	
ISSUED FOR CONST.	05-02-18	
NO.	REVISION	DATE