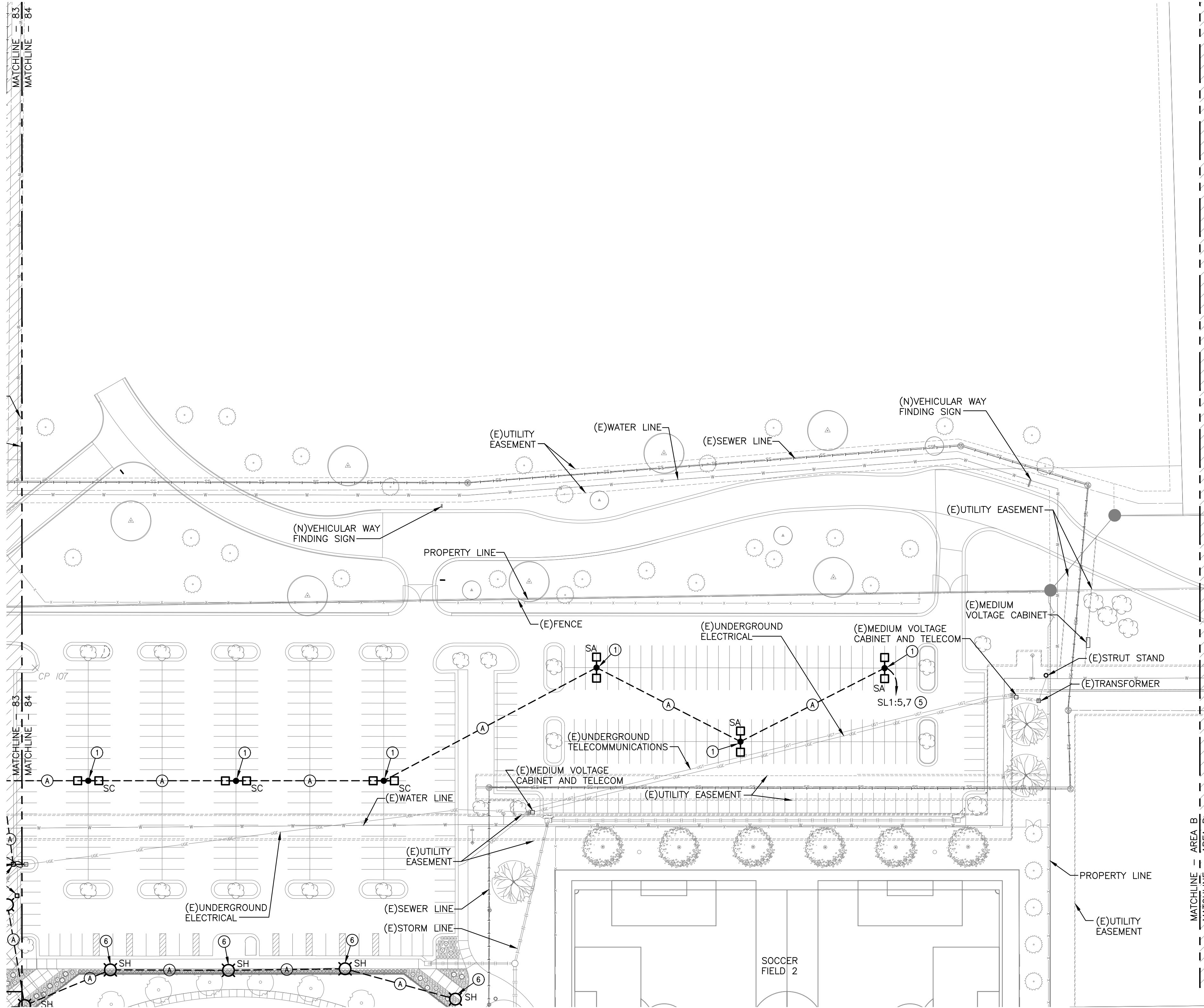


PLOTTED: Wednesday, May 02, 2018 @ 01:45PM

J:\PROJECTS\2017\1010567_COW_STRYKER_170567_CAD\SH1\10 BLOG MEP\SITE LIGHTING PACKAGE\170567-08-101-04 ELECTRICAL SITE LIGHTING PLAN.DWG



ELECTRICAL SITE PLAN - AREA B
 SCALE: 1" = 50'-0"

ELECTRICAL SITE PLAN - AREA B CONT.
 SCALE: 1" = 50'-0"

FIXTURE LEGEND	
•□	SINGLE ARM FIXTURE.
□•□	DOUBLE ARM FIXTURE AT 0° AND 180°.
⊗	PEDESTRIAN FIXTURE.
○	FLAG POLE FIXTURE.

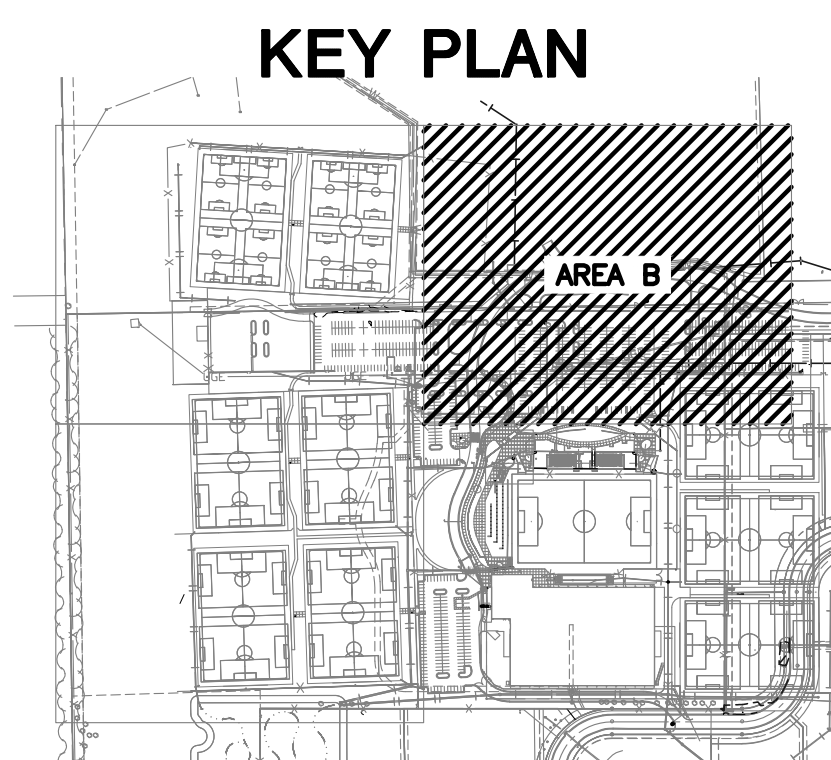
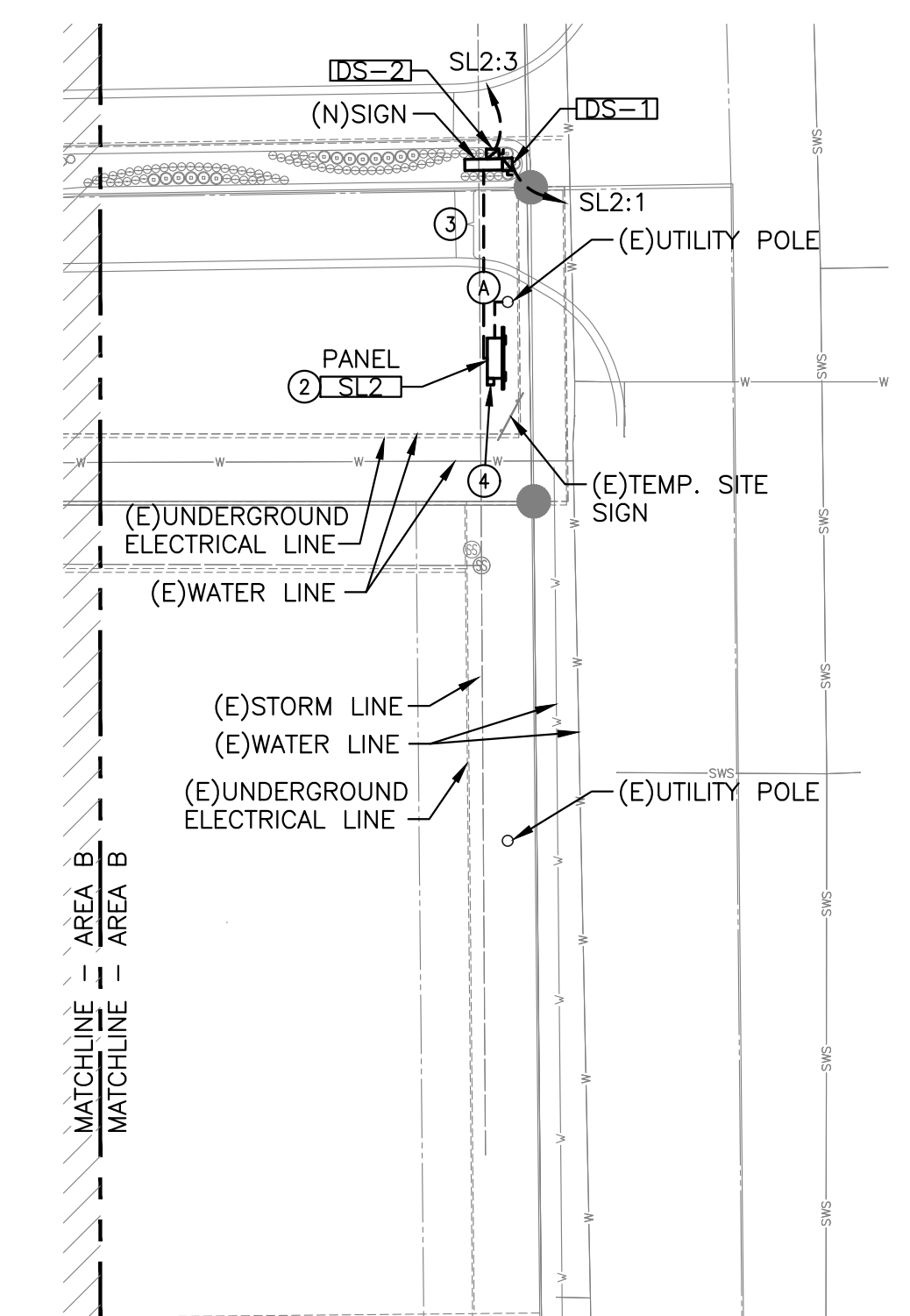
- GENERAL NOTES**
- EXISTING CONDITIONS SHOWN ON THE DRAWINGS WERE TAKEN FROM ORIGINAL DOCUMENTS AND FIELD OBSERVATIONS. THIS CONTRACTOR SHALL BE RESPONSIBLE FOR VERIFICATION OF EXISTING CONDITIONS. E.C. SHALL VISIT THE JOBSITE PRIOR TO BID AND VERIFY ALL EXISTING CONDITIONS.
 - UPON COMPLETION OF PROJECT, E.C. SHALL PROVIDE A FULL TYPED AND UPDATED PANEL DIRECTORY FOR EACH PANELBOARD AFFECTED BY THE SCOPE OF THIS PROJECT.
 - FEEDER ROUTING INDICATED ON THE DRAWINGS DOES NOT INDICATE NEC CODE REQUIRED PULL BOXES. E.C. SHALL BE RESPONSIBLE FOR LOCATING AND INSTALLING REQUIRED PULL BOXES FOR EACH FEEDER.



- KEYED NOTES**
- REFER TO DETAIL 1/87 FOR POLE BASE DETAIL.
 - PROVIDE AND INSTALL PANEL 'SL2' ON STRUT STAND.
 - DIRECTIONAL BORE (2)-1" UNDER ROADWAY FOR SIGN POWER.
 - PROVIDE AND INSTALL PHOTOCELL ON PANEL 'SL2'. SEE DETAIL 4/87 FOR LIGHTING CONTROLLER DETAIL.
 - ROUTE CIRCUIT THROUGH LIGHTING CONTACTOR 'LC-1'. SEE DETAIL 4/87.
 - REFER TO DETAIL 2/87 FOR POLE BASE DETAIL.

FEEDER SCHEDULE

(A)	PROVIDE (2)-#10, (1)-#10 GND IN EXISTING 1" CONDUIT FOR LIGHTING.
-----	---



PAVING, LANDSCAPE & UTILITIES FOR
STRYKER SPORTS
 WICHITA, KANSAS



©2018 MKEC Engineering All Rights Reserved
 www.mkec.com
 These drawings and their contents, including, but not limited to, all concepts, designs, & ideas are the exclusive property of MKEC Engineering (MKEC), and may not be used or reproduced in any way without the express consent of MKEC.

ELECTRICAL SITE PLAN - AREA B

PROJECT NO.	1701010567	
DATE	MAY 2, 2018	
SCALE	1"=50'-0"	
DESIGNED	CNG	
DRAWN	ECW	
CHECKED	JRBW	
ISSUED FOR CONST.	05-02-18	
NO.	REVISION	DATE
SHEET NO.		
84 OF 102		