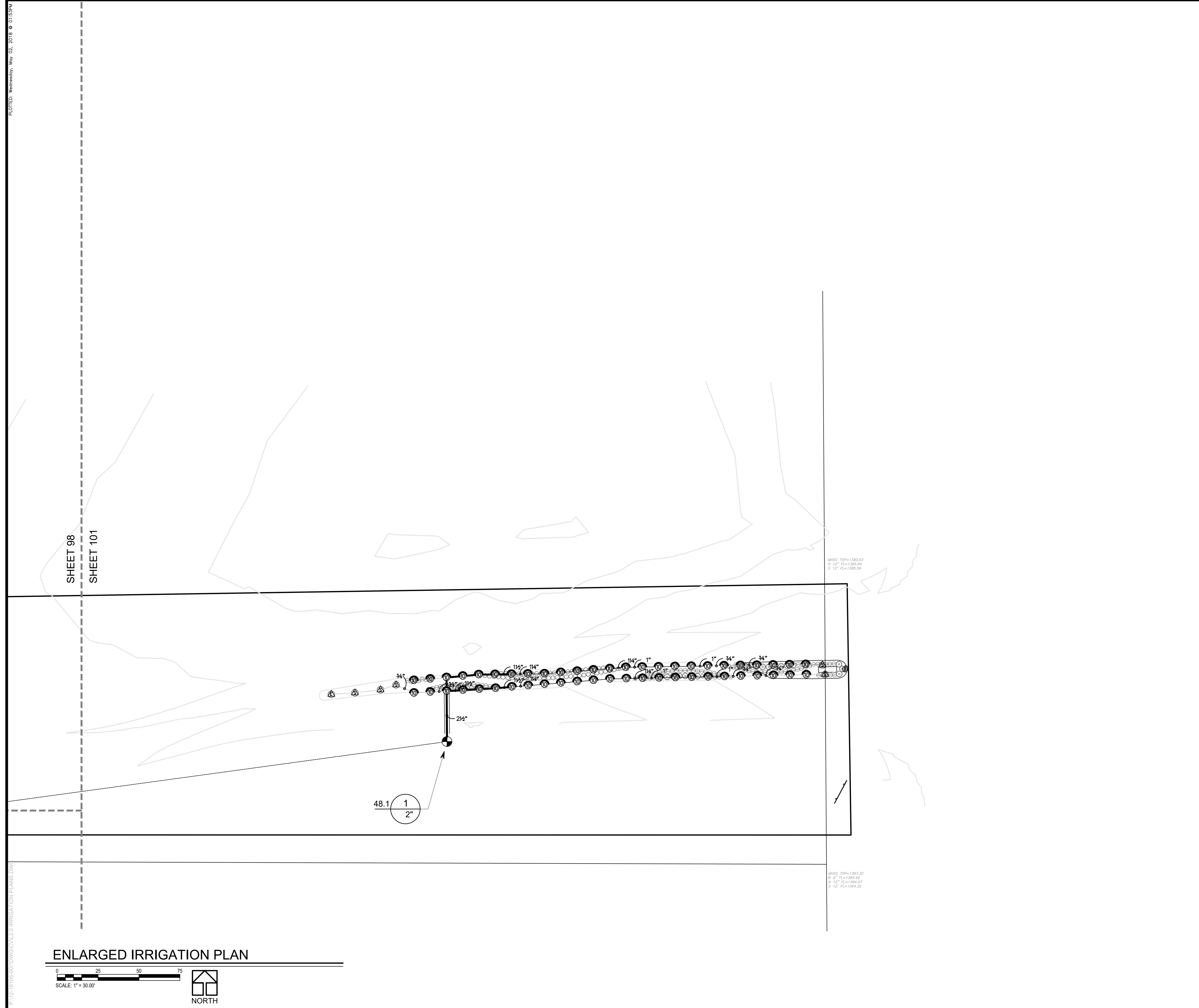


PROJECT: WICHITA, KS - 05/02/2018 © 01:13:59M

PROJECT: WICHITA, KS - 05/02/2018 © 01:13:59M



### IRRIGATION SCHEDULE

SYMBOL	MANUFACTURER/MODEL/DESCRIPTION	QTY	PSI		
	Rain Bird 1806-U-PRS 15 Strip Series Turf Spray 6.0' Pop-Up Sprinkler with Co-Molded Wiper Seal. Side and Bottom Inlet. 1/2" NPT Female Threaded Inlet. Pressure Regulating.	40	30		
	Rain Bird 1806-U-PRS U10 Series Turf Spray 6.0' Pop-Up Sprinkler with Co-Molded Wiper Seal. Side and Bottom Inlet. 1/2" NPT Female Threaded Inlet. Pressure Regulating.	135	30		
	Rain Bird 1812-PRS-U 15 Strip Series Shrub Spray, 12.0' Pop-Up Sprinkler with Co-Molded Wiper Seal. Side and Bottom Inlet. 1/2" NPT Female Threaded Inlet. With Pressure Regulating Device.	79	30		
	Rain Bird 1812-PRS-U 15 Strip Series Shrub Spray, 12.0' Pop-Up Sprinkler with Co-Molded Wiper Seal. Side and Bottom Inlet. 1/2" NPT Female Threaded Inlet. With Pressure Regulating Device.	46	30		
	Rain Bird 1812-PRS-U U10 Series Shrub Spray, 12.0' Pop-Up Sprinkler with Co-Molded Wiper Seal. Side and Bottom Inlet. 1/2" NPT Female Threaded Inlet. With Pressure Regulating Device.	156	30		
	Rain Bird 1812-PRS-U U12 Series Shrub Spray, 12.0' Pop-Up Sprinkler with Co-Molded Wiper Seal. Side and Bottom Inlet. 1/2" NPT Female Threaded Inlet. With Pressure Regulating Device.	4	30		
	Rain Bird 1812-PRS-U U15 Series Shrub Spray, 12.0' Pop-Up Sprinkler with Co-Molded Wiper Seal. Side and Bottom Inlet. 1/2" NPT Female Threaded Inlet. With Pressure Regulating Device.	8	30		
	Rain Bird 1812-PRS-U ADJ Shrub Spray, 12.0' Pop-Up Sprinkler with Co-Molded Wiper Seal. Side and Bottom Inlet. 1/2" NPT Female Threaded Inlet. With Pressure Regulating Device.	12	30		
	Rain Bird 1812-PRS-U 8 FLT Series MPR Shrub Spray, 12.0' Pop-Up Sprinkler with Co-Molded Wiper Seal. Side and Bottom Inlet. 1/2" NPT Female Threaded Inlet. With Pressure Regulating Device.	1	30		
	Rain Bird R-1318 1806-SAM-P45 Turf Rotator, 13'-18" Rotary Stream, w/1800 turf spray body on 6.0' pop-up, with check valve and 45 psi in-stem pressure regulator. 1/2" NPT Female Threaded Inlet.	3	45		
	Rain Bird RVAN18 1806-SAM-P45 Turf Rotator, 13'-18" Hand Adjustable Rotary Stream, w/1800 turf spray body, 6.0' Pop-Up. With Seal-A-Matic Check Valve and 45 psi in-stem pressure regulation.	461	45		
	Hunter I-20-06	30	55	2.10	34"
	Hunter I-20-06	152	55	3.40	39"
	Hunter I-20-06	346	55	6.70	44"
	Rain Bird PEB-PRS-D 1", 1-1/2", 2" Plastic Industrial Valves. Low Flow Operating Capability, Globe Configuration. With Pressure Regulator Module.	102			
	Rain Bird 3-RC 3/4" Brass Quick-Coupling Valve, with Corrosion-Resistant Stainless Steel Spring, Thermoplastic Rubber Cover, and 1-Piece Body.	3			
	Rain Bird 300-BPE-NP-HAN Angle 3" 3" Brass Master Valve, with Angle Configuration. With Purple Flow Control Handle for Non-Potable Water Applications.	1			
	Rain Bird 300-BPE-NP-HAN Angle 3" 3" Brass Master Valve, with Angle Configuration. With Purple Flow Control Handle for Non-Potable Water Applications.	1			
	Febco 850 Master Series 2-1/2" Double Check Backflow prevention, 2-1/2" to 10".	1			
	Watertronics WaterMax 5000 - 05 HP Efficient compact pumping system, 5 horsepower, 3-Phase, Variable Frequency Drive	1			
	Irrigation Lateral Line: PVC Class 200 SDR 21	37,834 l.f.			
	Irrigation Mainline: HDPE PE4710 DR 17	10,640 l.f.			
	Pipe Sleeve: PVC Class 200 SDR 21	2,487 l.f.			
	Valve Collout				
	Valve Number				
	Valve Flow				
	Valve Size				



PAVING, LANDSCAPE, AND UTILITIES DRAWINGS FOR  
**STRYKER SPORTS**  
 WICHITA, KANSAS

©2018  
 MKEC Engineering  
 All Rights Reserved  
 www.mkec.com  
 These drawings and their contents, including, but not limited to, all concepts, designs, & ideas are the exclusive property of MKEC Engineering (MKEC), and may not be used or reproduced in any way without the express consent of MKEC.

### ENLARGED IRRIGATION PLAN

PROJECT NO.	1701010567	
DATE	05-02-18	
SCALE	1"=30'	
DESIGNED	JLE	
DRAWN	JLE	
CHECKED	DHC	
ISSUED FOR CONST.	05-02-18	
NO.	REVISION	DATE
SHEET NO.		101 of 102

