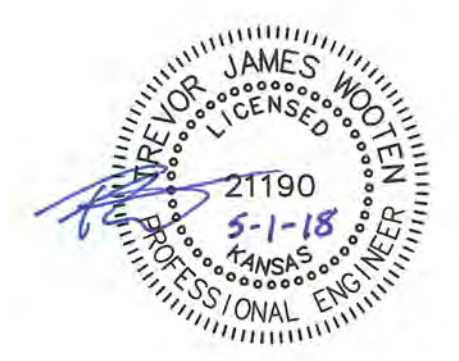
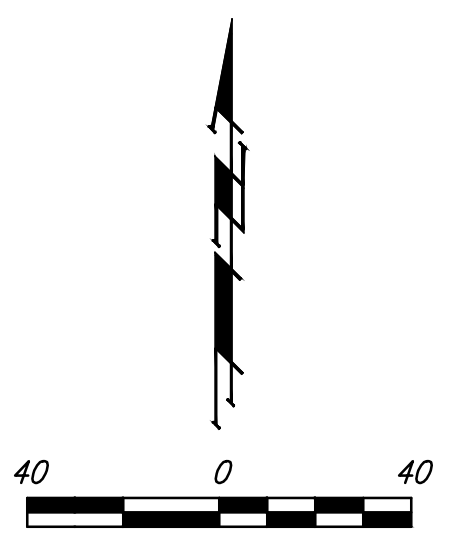
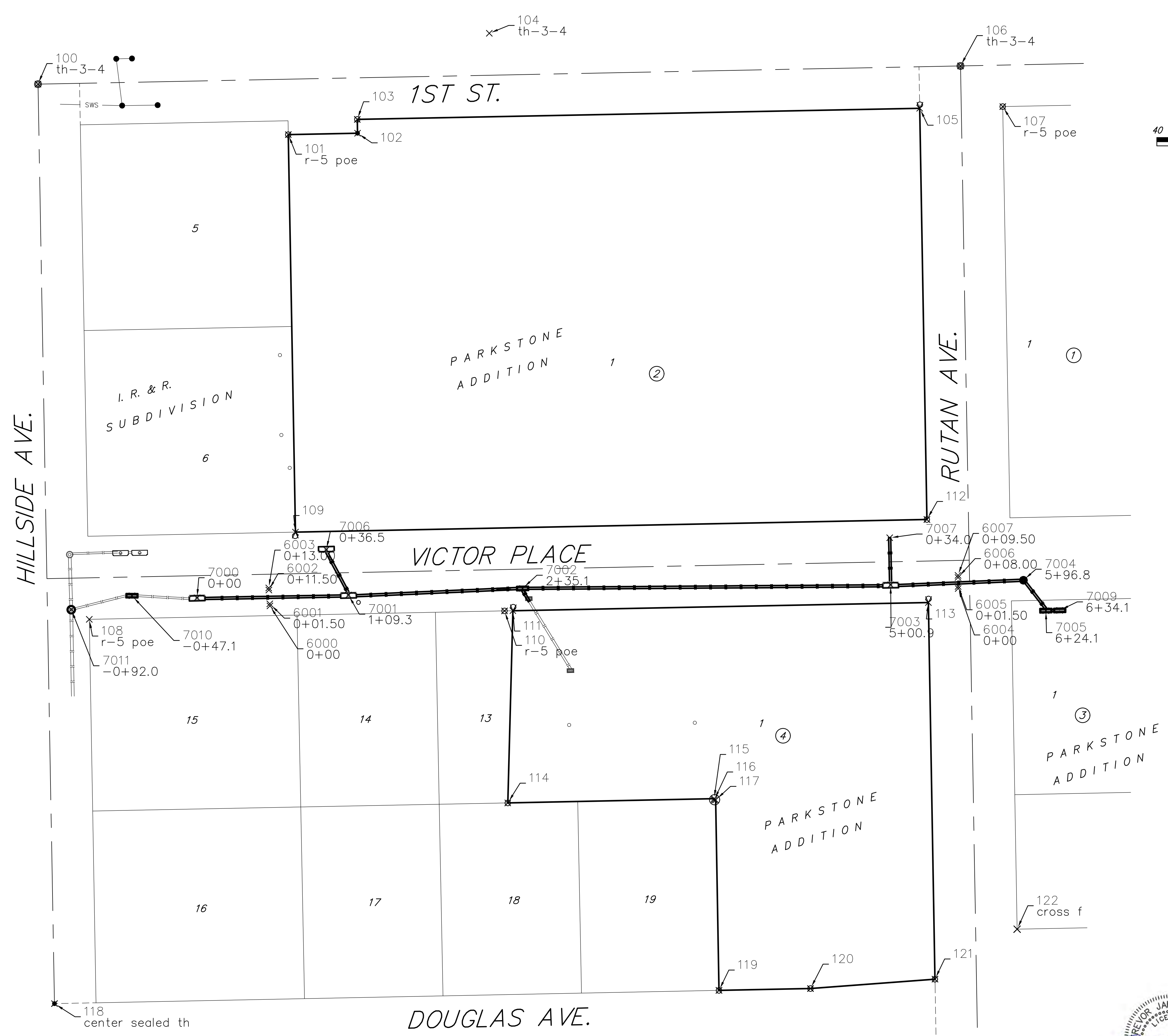


Point Table			
Point #	Northing	Easting	Raw Description
100	1686546.95	1659859.73	th-3-4
101	1686510.52	1660040.45	r-5 poe
102	1686511.50	1660090.45	
103	1686521.50	1660090.27	
104	1686583.70	1660185.59	th-3-4
105	1686529.53	1660496.36	
106	1686560.11	1660525.83	th-3-4
107	1686530.74	1660556.33	r-5 poe
108	1686160.37	1659896.77	r-5 poe
109	1686223.37	1660045.62	
110	1686166.50	1660196.60	r-5 poe
111	1686166.61	1660202.59	
112	1686232.51	1660501.57	
113	1686172.52	1660502.62	
114	1686027.80	1660198.94	
115	1686030.89	1660347.92	
116	1686029.90	1660347.94	
117	1686029.89	1660349.03	
118	1685882.83	1659871.62	center sealed th
119	1685892.39	1660351.44	
120	1685893.71	1660417.49	
121	1685900.50	1660507.39	
122	1685936.62	1660566.71	cross f
6000	1686170.09	1660027.18	0+00
6001	1686171.59	1660027.08	0+01.50
6002	1686181.56	1660026.42	0+11.50
6003	1686183.06	1660026.32	0+13.00
6004	1686182.63	1660524.13	0+00
6005	1686184.13	1660524.11	0+01.50
6006	1686190.63	1660524.03	0+08.00
6007	1686192.13	1660524.01	0+09.50
7000	1686175.95	1659974.61	0+00
7001	1686177.94	1660083.90	1+09.3
7002	1686182.69	1660209.61	2+35.1
7003	1686185.33	1660475.36	5+00.9
7004	1686188.65	1660571.26	5+96.8
7005	1686166.68	1660587.45	6+24.1
7006	1686210.76	1660067.91	0+36.5
7007	1686219.32	1660474.67	0+34.0
7009	1686166.85	1660597.45	6+34.1
7010	1686177.43	1659927.58	-0+47.1
7011	1686167.42	1659883.74	-0+92.0



Baughman Company, P.A.
 ENGINEERING ARCHITECTURE
 1150 W. WALKER ST. #211
 MEMPHIS, TN 38103
 Baughman

PARKSTONE ADDITION
 COORDINATE SHEET
 STORM WATER SEWER IMPROVEMENTS