

State of Kansas) ss
Sedgwick County)

I, the undersigned, registered land surveyor of the State of Kansas, do hereby certify that the following described tract of land was surveyed on October 18, 2007 and the accompanying final plat was prepared and that all the monuments shown herein actually exist and their positions are correctly shown to the best of my knowledge and belief.

Lots 1-4, 7-13, EXCEPT the W 1/2 Lot 13, the East boundary of which is a concrete curb running North to South, AND All of Lot 20, The north 1 foot of the east 1 foot of Lot 19, I, R & R Subdivision of Block 1 in College Hill Addition to Wichita, Kansas, EXCEPT the north 10 feet of the west half of said Lot 4, and EXCEPT Beginning at a point 90 feet west of the southeast corner of said Lot 20, thence east to the southeast corner of Lot 20, thence north 5 feet, thence southwesterly to the point of beginning; Along with the west 100 feet of the north 140 feet, College Park, College Hill Addition to Wichita; AND Along with Lots 2, 4, 6, 8, 10 and 12, Roembach's Addition to Wichita, Kansas; AND Along with the west 50 feet of the south half of the east half of 1, Block 2, College Hill Addition to Wichita; AND Along with the north half of the west half of 1, Block 2, College Hill Addition to Wichita.

Existing public dedications, rights of way, and easements being vacated by virtue of K.S.A. 12-512(b).



William P. Fox, L.S. # 799
for Poe & Associates, Inc., Surveyor

State of Kansas) ss
Sedgwick County)

Know all men by these presents that we, the undersigned, have caused the land described in the surveyor's certificate to be platted into Lots and Blocks, to be known as "PARKSTONE ADDITION", to Wichita, Sedgwick County, Kansas. The utility easements are hereby granted to the public as indicated for constructing, maintaining, operating, and repairing utilities. The temporary utility easements are granted until such time as the existing utilities within the easements are relocated. The access controls are hereby granted to the appropriate governing body as shown hereon. Right of Way as shown is hereby dedicated to the public for streets. A drainage plan has been developed for the plat. All drainage easements and/or rights of way shall remain at established grades or as modified with the approval of the applicable City of County Engineer, and unobstructed to allow for the conveyance of stormwater.

City of Wichita
Carl Brewer, Mayor

State of Kansas) ss
Sedgwick County)

BE IT REMEMBERED that on this 28th day of March, 2008, before me, the undersigned, a notary public in and for the County and State aforesaid came Carl Brewer, Mayor, City of Wichita, personally known to me to be the same persons who executed this instrument and such persons duly acknowledged the execution of the same.

IN WITNESS WHEREOF, I have hereunto set my hand and affixed my official seal the day and year first above written.

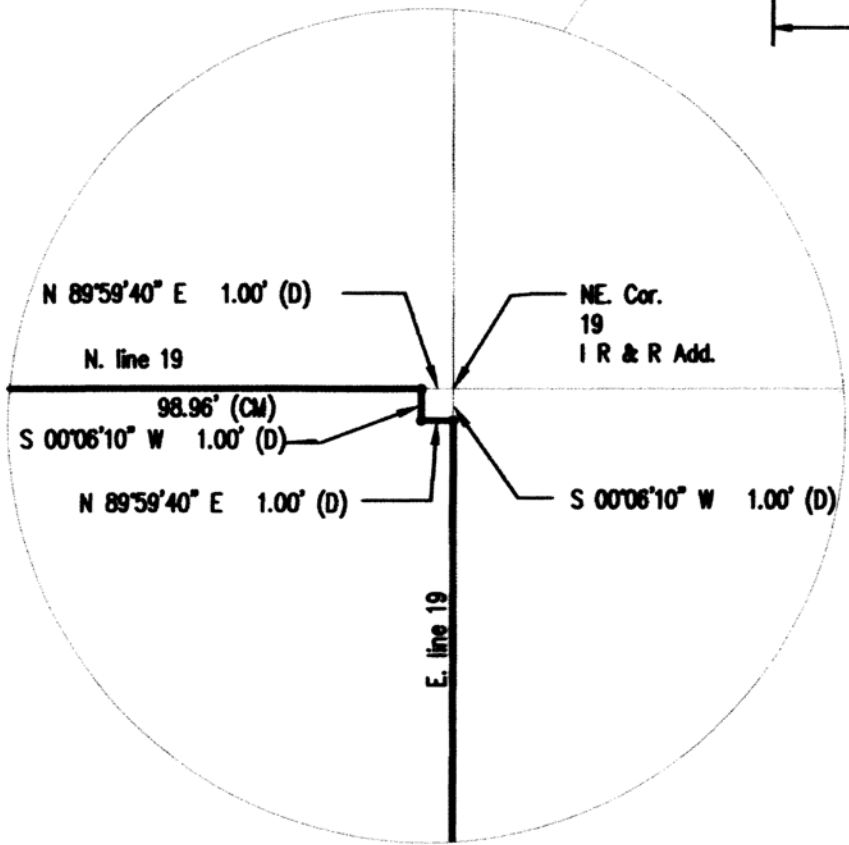
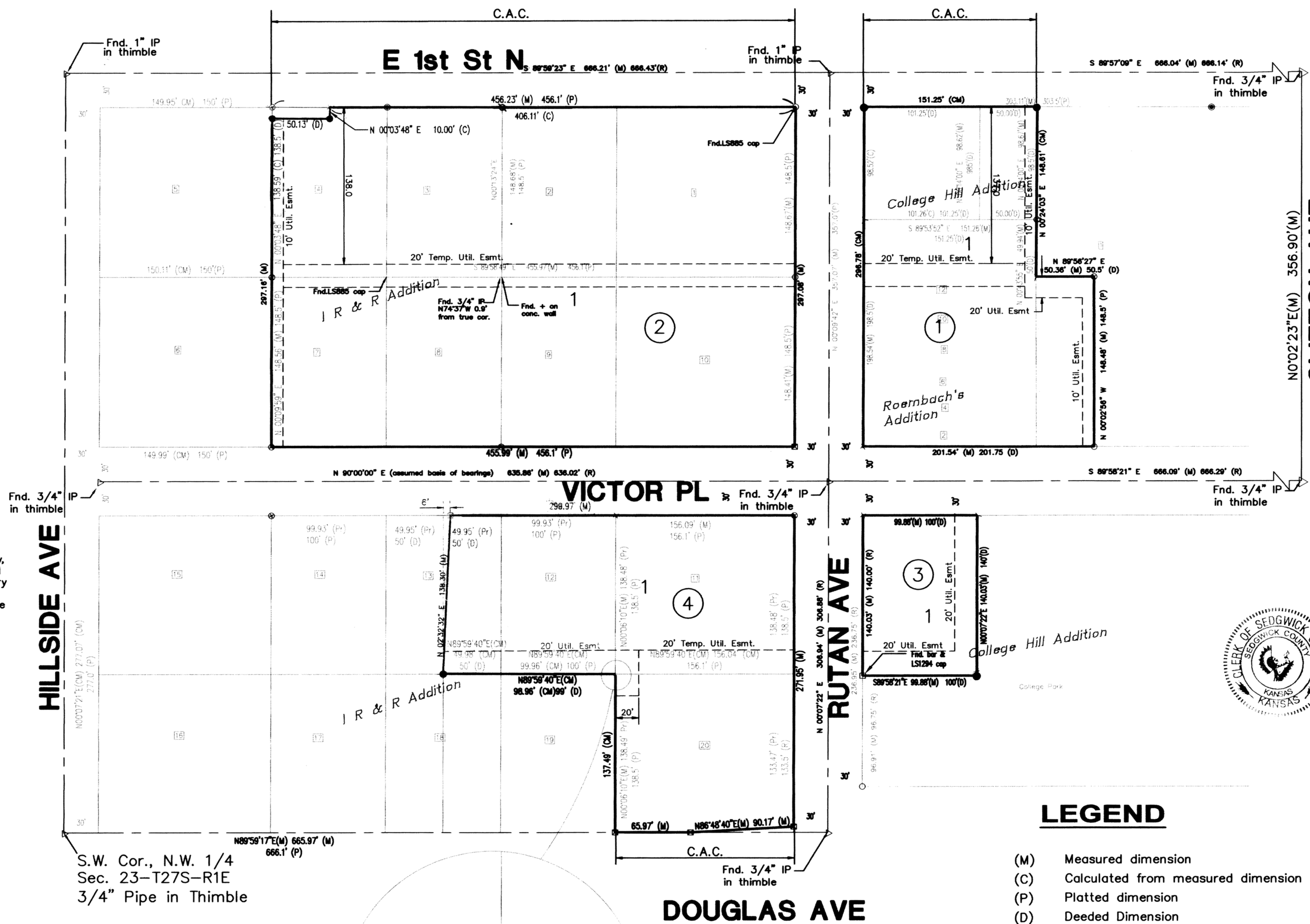
Notary Public: Deborah A. Tadlock

Name: Deborah A. Tadlock

My Appointment Expires: 7-15-08

Notary Public State of Kansas
Deborah A. Tadlock
My Appt Exp 7-15-08

**FOR REFERENCE ONLY
NOT TO SCALE**



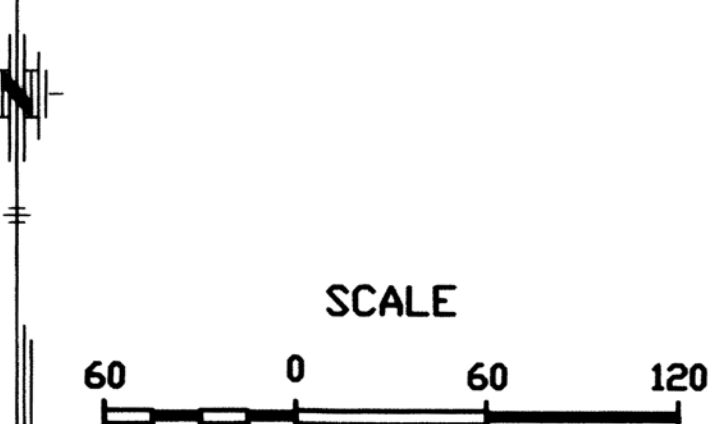
LEGEND

- (M) Measured dimension
- (C) Calculated from measured dimension
- (P) Platted dimension
- (D) Deeded Dimension
- Point Set
- ⊕ "+" Cut Set
- ⊗ "+" Cut Found
- 1/2" bar Found
- ▽ Pipe in Thimble Found
- ✕ PK Nail Found
- 3" Monument disk Found
- ∩ "V" Notch Found
- 5/8" Bar Found
- 1 1/2" Pipe Found
- ⊗ 3/4" Pipe Found
- C.A.C. Complete Access Control
- Original Lot Number

Note:
This plat is subject to the Provisions of Parkstone Planned Unit Development, PUD-26 on file with the Metropolitan Area Planning Dept.

**FINAL PLAT OF
PARKSTONE ADDITION
TO WICHITA, SEDGWICK COUNTY, KANSAS
LOCATED IN THE NW 1/4, SECTION 23, T27S, R1E OF THE 6 P.M.**

DATE OF PREPARATION 10/11/07



State of Kansas) ss
Sedgwick County)
This plat of "PARKSTONE ADDITION", to Wichita, Sedgwick County, Kansas has been submitted to and approved by the Wichita/Sedgwick County Metropolitan Area Planning Commission, Wichita, Kansas.

Dated this 6th day of September, 2007.
Wichita/Sedgwick County Metropolitan Area Planning Commission

Darrell A. Downing, M.S. Mitchell, Chair
John L. Schlegel, Secretary

State of Kansas) ss
City of Wichita)
This plat approved and all dedications shown hereon accepted by the City Council of the City of Wichita, Kansas, this 25 day of March, 2007. At the Direction of the City Council.

Carl Brewer, Mayor
Karen Sublett, Clerk
Karen Sublett

Entered on transfer record this 4th day of April, 2008.
Don Brace, County Clerk
Don Brace

State of Kansas) ss
Sedgwick County)
This is to certify that this instrument was filed for record in the Register of Deeds office at 10:19:04 o'clock A. .m., on the 4th day of April, 2008, and is duly recorded.

Bill Meek, Register of Deeds
Tonya Buckingham, Deputy

State of Kansas) ss
Sedgwick County)
Reviewed in accordance with K.S.A. 58-2005 on this 17th day of October, 2007.

Sedgwick County
Register of Deeds Bill Meek
DOC #/FLM-PG: 2696/4766
Receipt #: 1684115
Pages Recorded: 1
Casher Initials: JP
Authorized By: [Signature]
Date Recorded: 4/1/2008 10:19:04 AM

TRICIA L. ROBELLO
LICENSED LAND SURVEYOR
KANSAS
10-17-07

Tricia L. Robello, L.S. # 1246
Deputy County Surveyor
Sedgwick County, Kansas