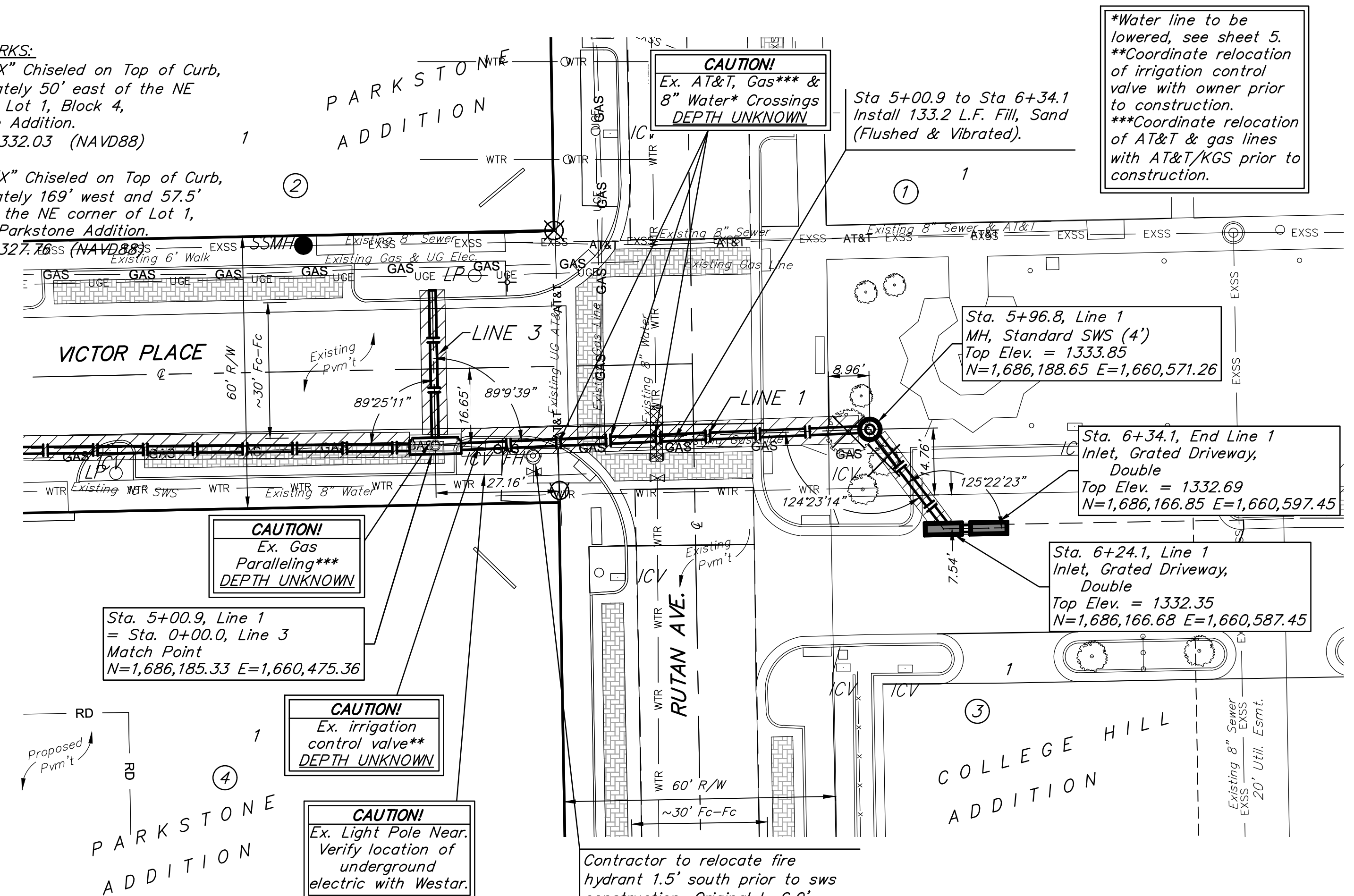


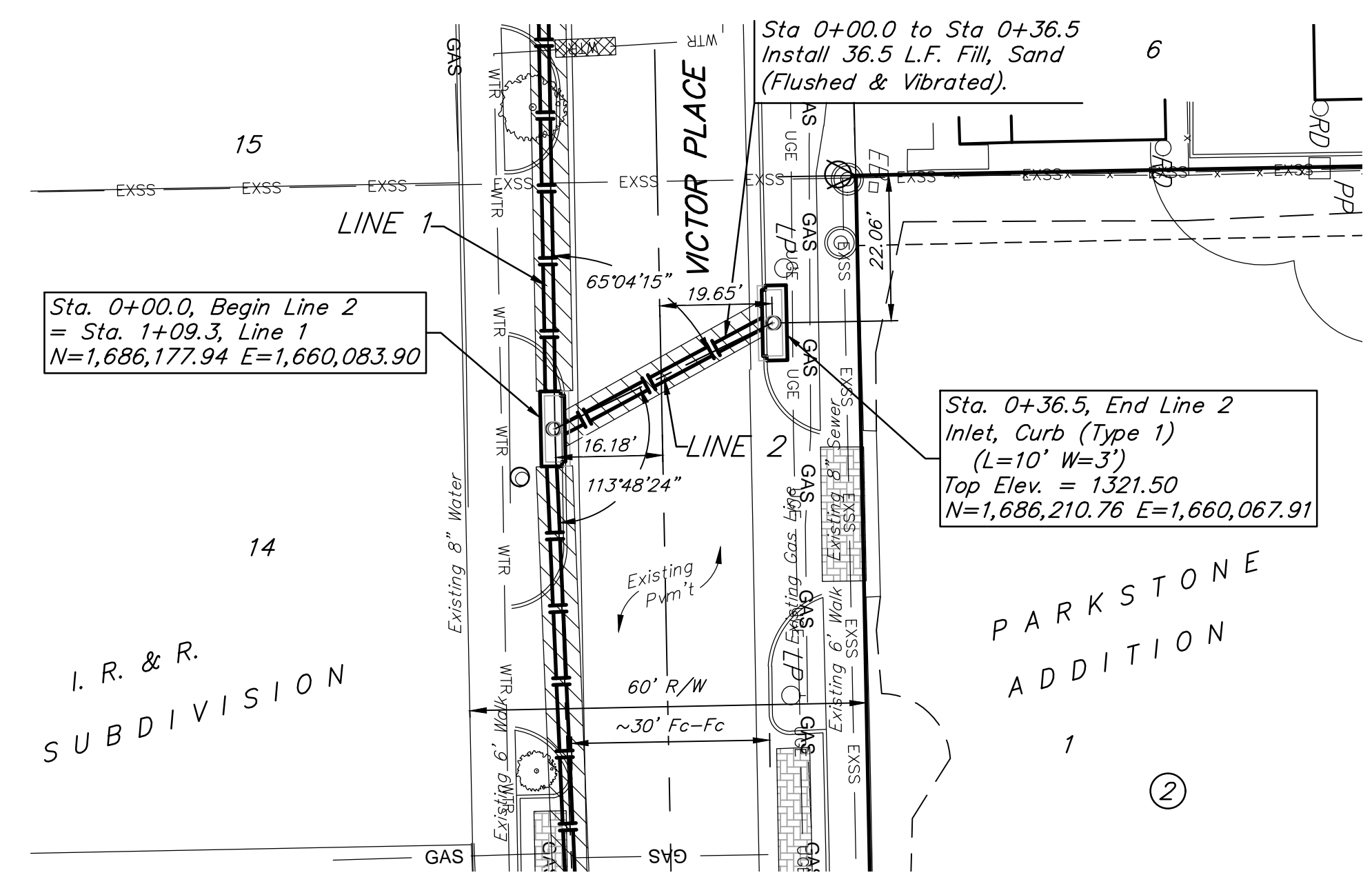
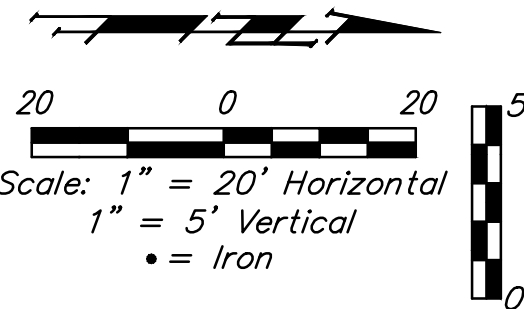
**BENCHMARKS:**  
 BM #1: "X" Chiseled on Top of Curb, approximately 50' east of the NE corner of Lot 1, Block 4, Parkstone Addition. Elev. = 1332.03 (NAVD88)

BM #2: "X" Chiseled on Top of Curb, approximately 169' west and 57.5' north of the NE corner of Lot 1, Block 4, Parkstone Addition. Elev. = 1327.76 (NAVD88)

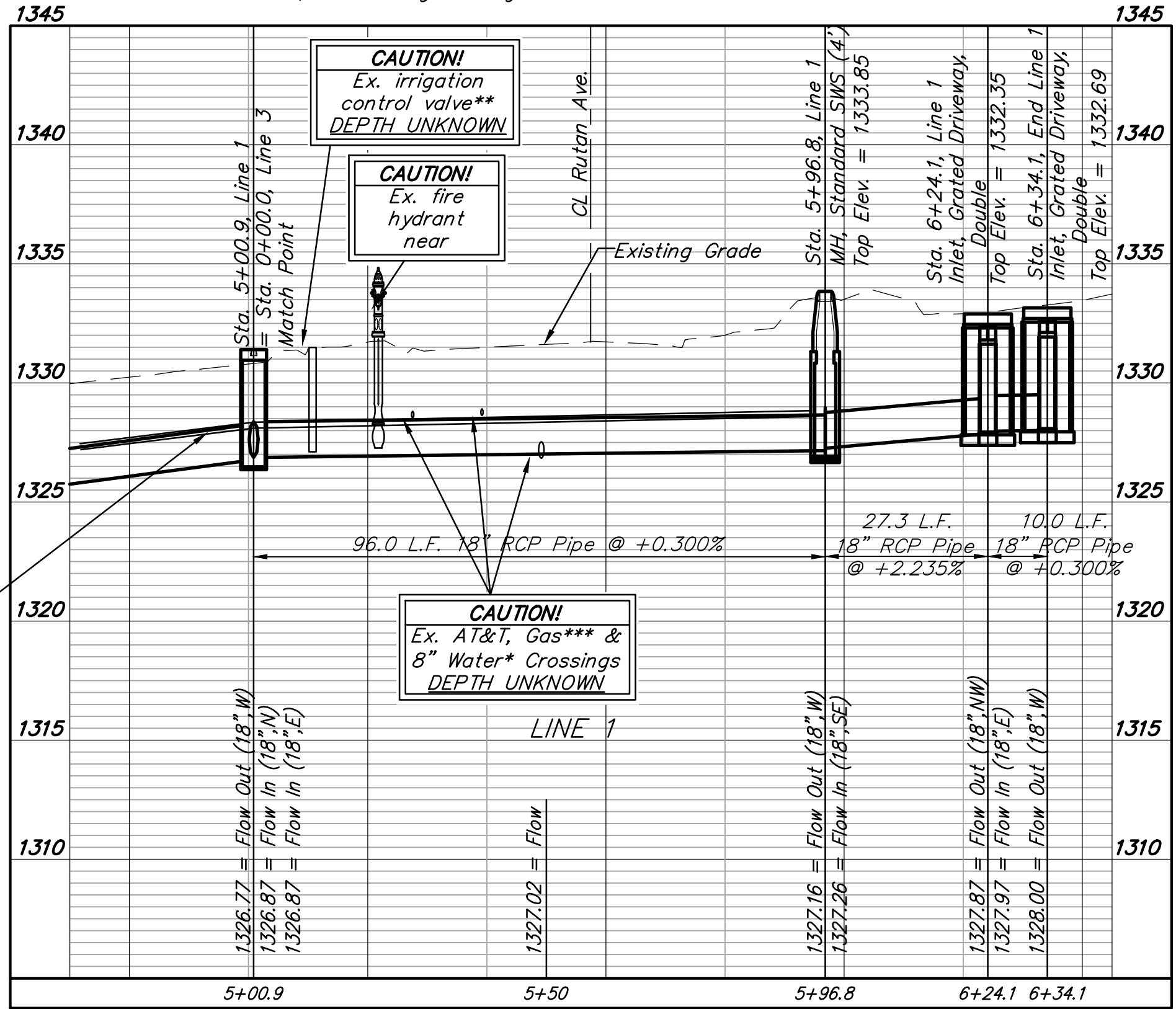


\*Water line to be lowered, see sheet 5.  
 \*\*Coordinate relocation of irrigation control valve with owner prior to construction.  
 \*\*\*Coordinate relocation of AT&T & gas lines with AT&T/KGS prior to construction.

Indicates tree to be removed by contractor. To be paid for as bid item "Tree Removed, Small". All other trees shall remain and be protected from damage during construction. Overhanging limbs shall be trimmed by the Contractor only as necessary for construction and with approval of the Engineer. Cost of tree trimming to be included in bid item "Site Clearing". Trees removed shall be replaced with tree of same species and comparable diameter, to be paid for as bid item "Tree". Shrubs removed shall be replaced with shrub of same species, to be paid for as bid item "Shrub". All other landscaping items including flowers, mulch, rock, etc, to be replaced with like items, to be incidental to lump sum bid item "Landscaping".

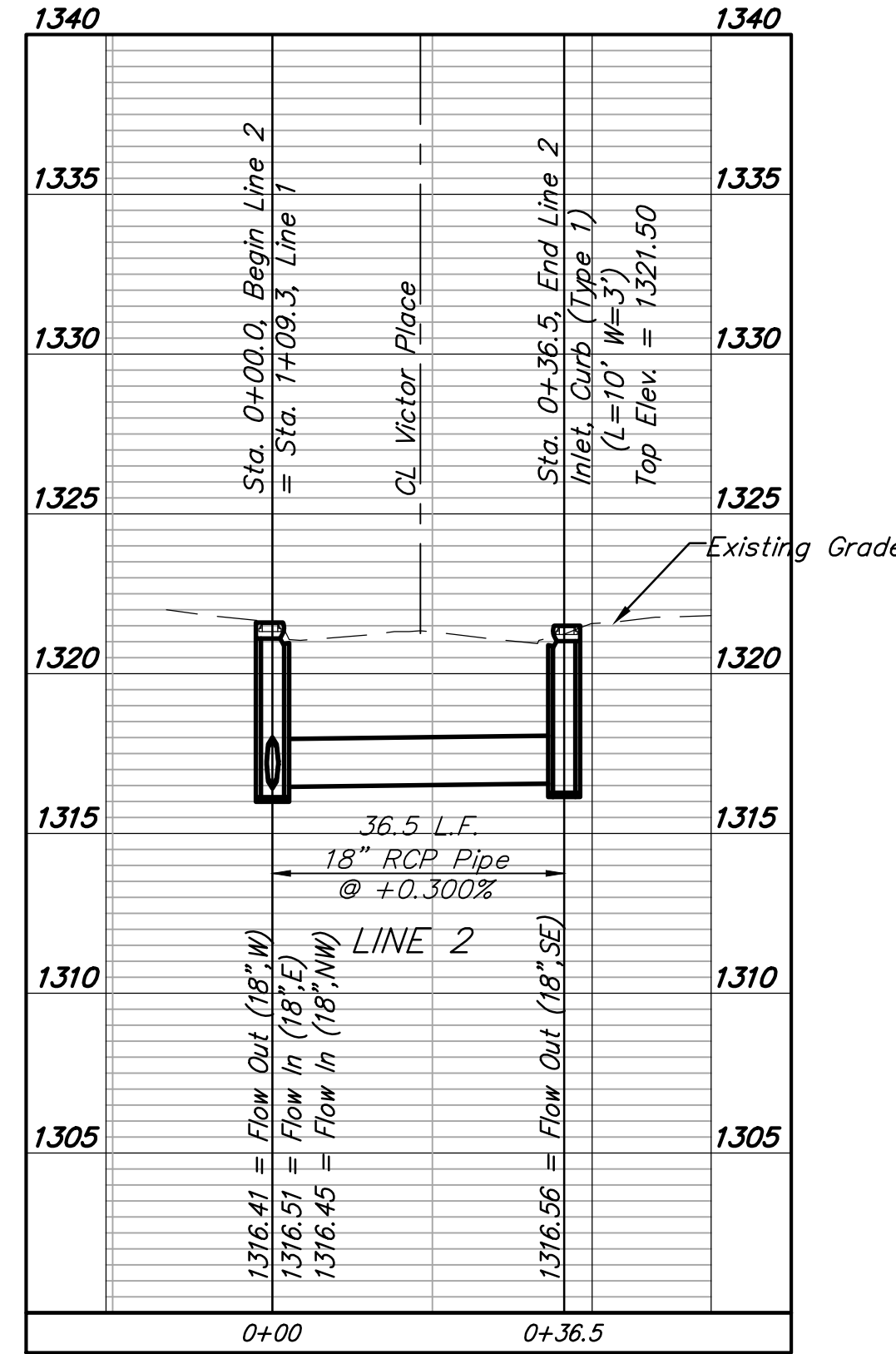


Contractor to relocate fire hydrant 1.5' south prior to sws construction. Original L=6.0', proposed L=4.5'. To be paid for as Fire Hydrant Relocation. Contractor to protect fire hydrant from damage during construction.



All trench and inlet excavation areas from Sta. 5+00.9 to Sta. 6+24.1, Line 1 and Sta. 0+00.0 to Sta. 0+36.5, Line 2 shall be backfilled with sand. The sand backfill shall be within two feet of existing grade and shall be water-jetted and vibrated during backfilling. All costs shall be paid for as L.F. "Fill, Sand (Flushed & Vibrated)".

Sta. 5+00.9 to Sta. 5+73.0 and Sta. 6+06.0 to Sta. 6+34.1 Line 1: Saw cut & remove (do not replace) curb and gutter, concrete driveways, sidewalk, asphalt pavement, and brick pavers as necessary for sws construction. See page 6 for pavement replacement.  
 Sta. 0+00.0 to Sta. 0+36.5 Line 2: Saw cut, remove & replace curb and gutter, concrete driveways, sidewalk, asphalt pavement, and brick pavers as necessary for sws construction.



21190  
 5-1-18  
 JAMES WOOD  
 PROFESSIONAL ENGINEER  
 KANSAS