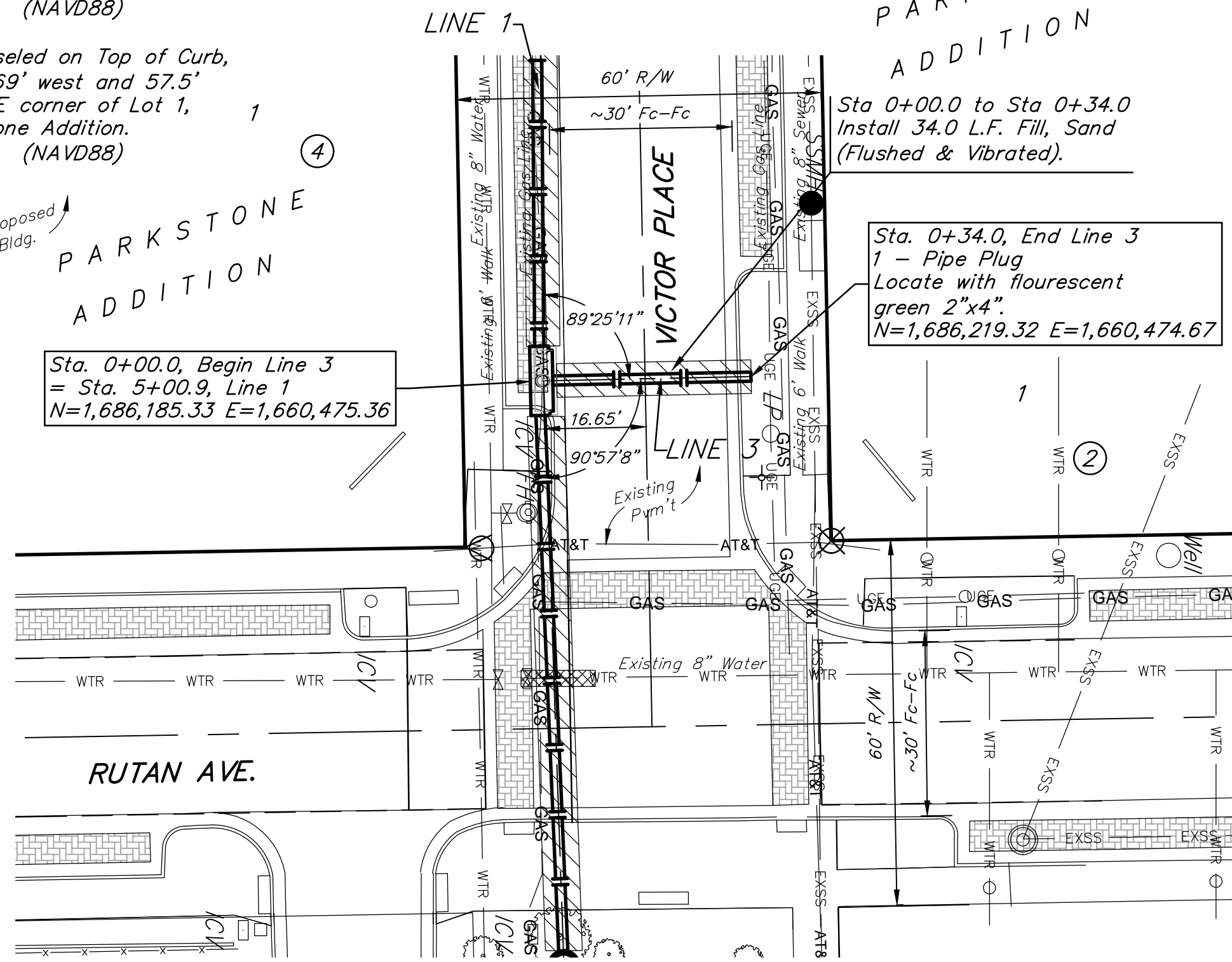


**BENCHMARKS:**  
 BM #1: "X" Chiseled on Top of Curb, approximately 50' east of the NE corner of Lot 1, Block 4, Parkstone Addition.  
 Elev. = 1332.03 (NAVD88)

BM #2: "X" Chiseled on Top of Curb, approximately 169' west and 57.5' north of the NE corner of Lot 1, Block 4, Parkstone Addition.  
 Elev. = 1327.76 (NAVD88)



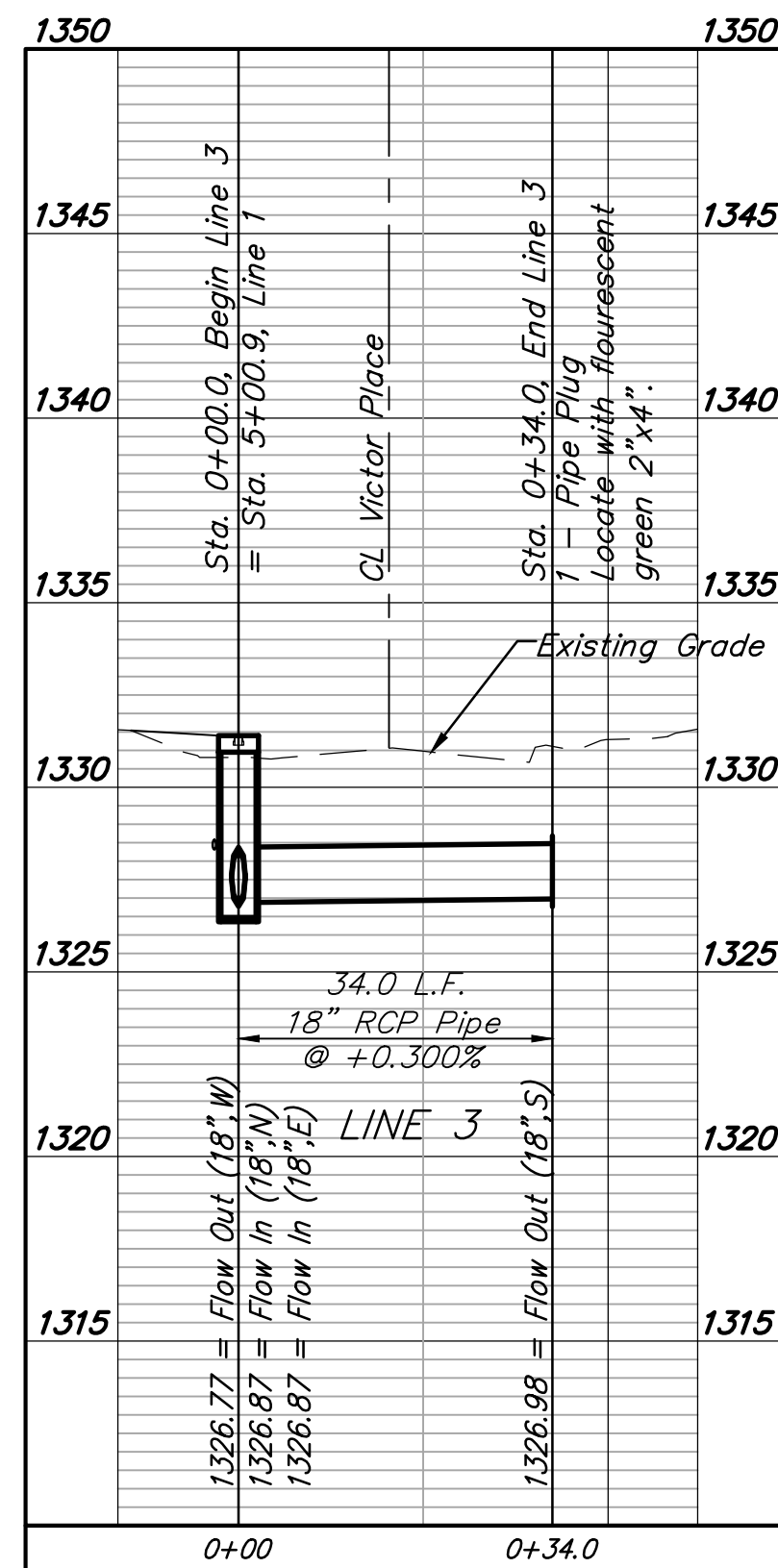
Sta. 0+00.0, Begin Line 3  
 = Sta. 5+00.9, Line 1  
 N=1,686,185.33 E=1,660,475.36

Sta. 0+00.0 to Sta. 0+34.0  
 Install 34.0 L.F. Fill, Sand  
 (Flushed & Vibrated).

Sta. 0+34.0, End Line 3  
 1 - Pipe Plug  
 Locate with fluorescent  
 green 2"x4".  
 N=1,686,219.32 E=1,660,474.67

All trench and inlet excavation areas from Sta. 0+00.0 to Sta. 0+34.0, Line 3 shall be backfilled with sand. The sand backfill shall be within two feet of existing grade and shall be water-jetted and vibrated during backfilling. All costs shall be paid for as L.F. "Fill, Sand (Flushed & Vibrated)".

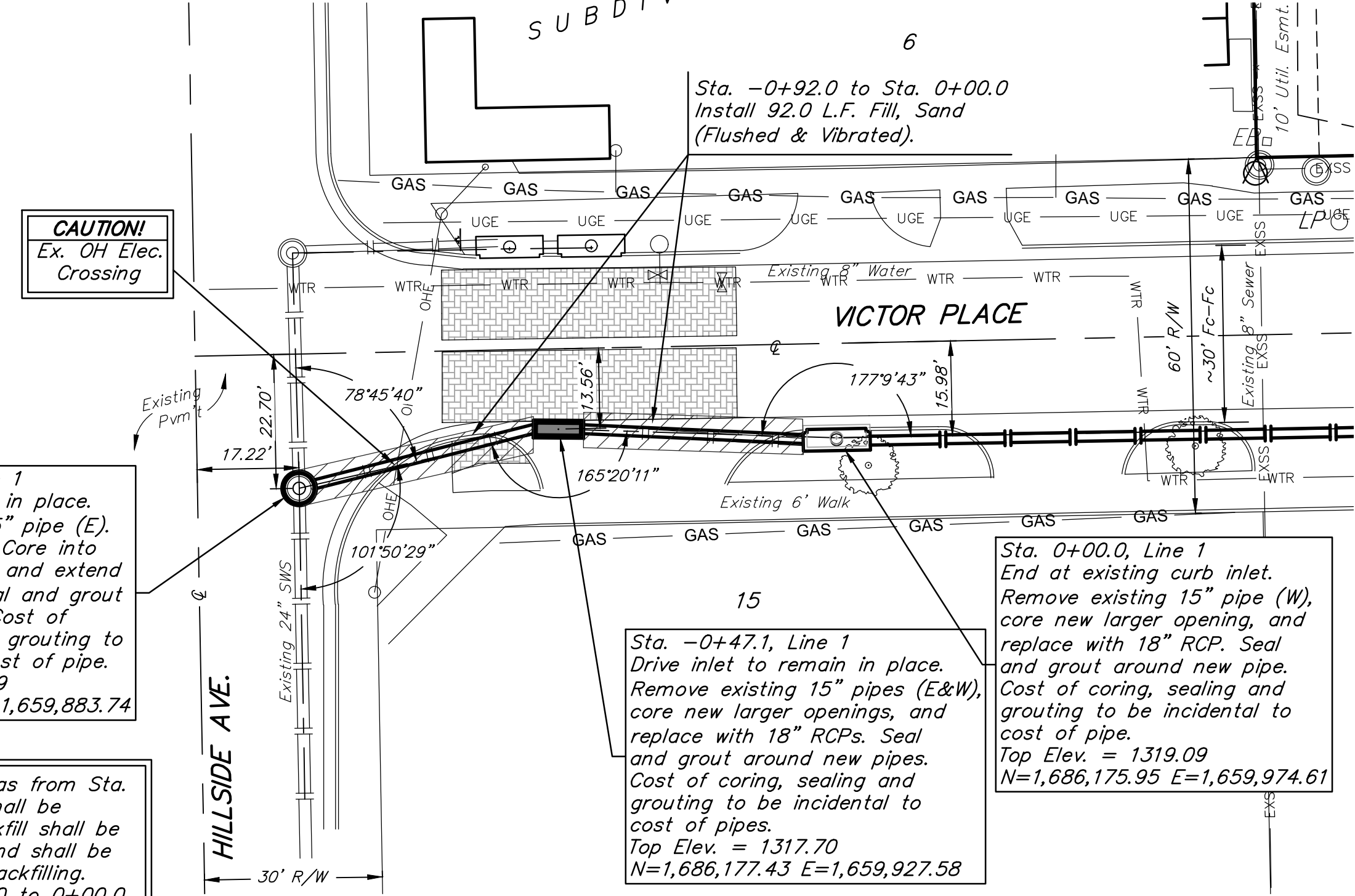
Sta. 0+00.0 to Sta. 0+34.0 Line 3:  
 Saw cut, remove & replace curb and gutter, concrete driveways, sidewalk, asphalt pavement, and brick pavers as necessary for s/w construction.



All trench and inlet excavation areas from Sta. -0+92.0 to Sta. 0+00.0, Line 1 shall be backfilled with sand. The sand backfill shall be within two feet of existing grade and shall be water-jetted and vibrated during backfilling. Cost of sand backfill from -0+92.0 to 0+00.0 to be included in bid item Add Alternate.

Saw cut, remove & replace curb and gutter, brick pavers, wheelchair ramp and asphalt paving along entire length of Add Alternate as necessary for s/w construction. Cost of removal and replacement from -0+92.0 to 0+00.0 to be included in bid item Add Alternate.

**ADD ALTERNATE**  
 ALL costs associated with pipe replacement to be bid as add alternate.

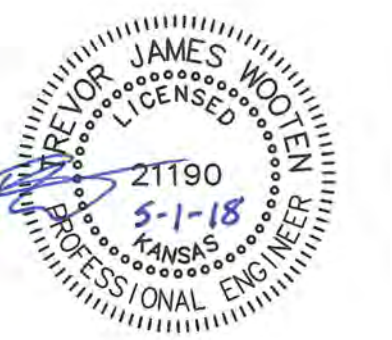
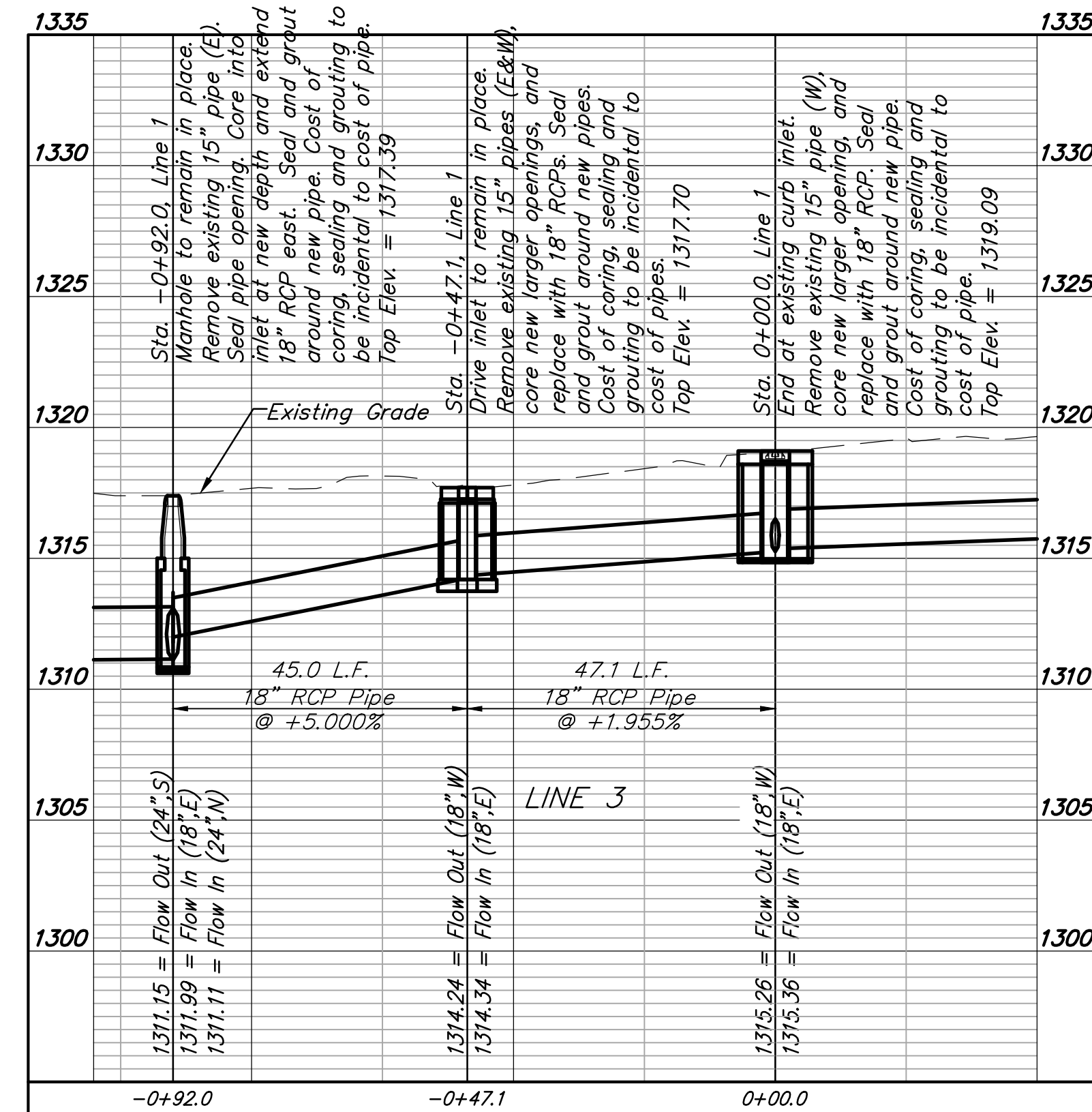


**CAUTION!**  
 Ex. OH Elec. Crossing

Sta. -0+92.0, Line 1  
 Manhole to remain in place. Remove existing 15" pipe (E). Seal pipe opening. Core into inlet at new depth and extend 18" RCP east. Seal and grout around new pipe. Cost of coring, sealing and grouting to be incidental to cost of pipe.  
 Top Elev. = 1317.39  
 N=1,686,167.42 E=1,659,883.74

Sta. -0+47.1, Line 1  
 Drive inlet to remain in place. Remove existing 15" pipes (E&W), core new larger openings, and replace with 18" RCPs. Seal and grout around new pipes. Cost of coring, sealing and grouting to be incidental to cost of pipes.  
 Top Elev. = 1317.70  
 N=1,686,177.43 E=1,659,927.58

Sta. 0+00.0, Line 1  
 End at existing curb inlet. Remove existing 15" pipe (W), core new larger opening, and replace with 18" RCP. Seal and grout around new pipe. Cost of coring, sealing and grouting to be incidental to cost of pipe.  
 Top Elev. = 1319.09  
 N=1,686,175.95 E=1,659,974.61



**Baughman Company, P.A.**  
 145 E. WILSON ST. STE. 201, P.O. BOX 201, P.O. DISTRICT 1, MOOREHEAD, MISSISSIPPI 39566  
 ENGINEERING, SURVEYING, PLANNING, LANDSCAPE ARCHITECTURE  
 TREVOR JAMES WOOTEN, License No. 21190, State of Kansas  
 Date: 5/1/18

PARKSTONE ADDITION  
 LINE 3  
 & ADD ALTERNATE  
 STORM WATER SEWER IMPROVEMENTS