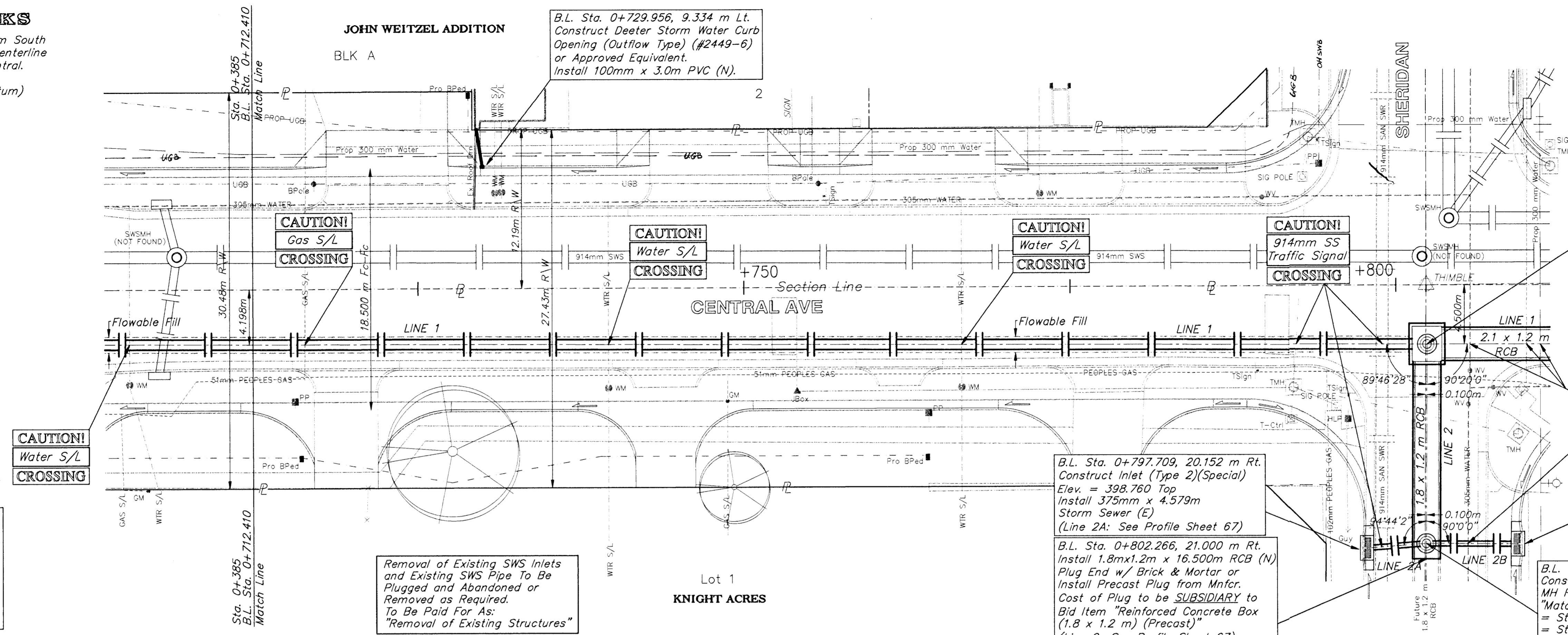


FHWA REGION NO.	STATE	PROJECT NO.	FISCAL YEAR	SHEET NO.	TOTAL SHEETS
7	KANSAS	87N-0094-01	1998	55	202

BENCHMARKS

BM #5 - City Disc Located @ 9.14m South and 12.8m East of the Centerline of both Sheridan and Central. Elev. = 399.024 SI Units (1309.08 MSL Datum)



Sta. 0+474.978, Line 1 = Sta. 0+000, Line 2 = B.L. Sta. 0+802.393, 3.0 m Rt. Center of RCB Junction. Construct Manhole (Reinf. Conc.) MH Rim Elev. = 398.793 Install 2.1m x 1.2m x 194.151m RCB (E) "Match Rim to Final Pvm't Lift" Match Point

CAUTION!
102mm Gas
305mm Water
Proposed
300mm Water
CROSSING

B.L. Sta. 0+809.317, 19.848 m Rt. Construct Inlet (Type 2)(Special) Elev. = 398.747 Top Install 375mm x 7.013m Storm Sewer (W) (Line 2B: See Profile Sheet 67)

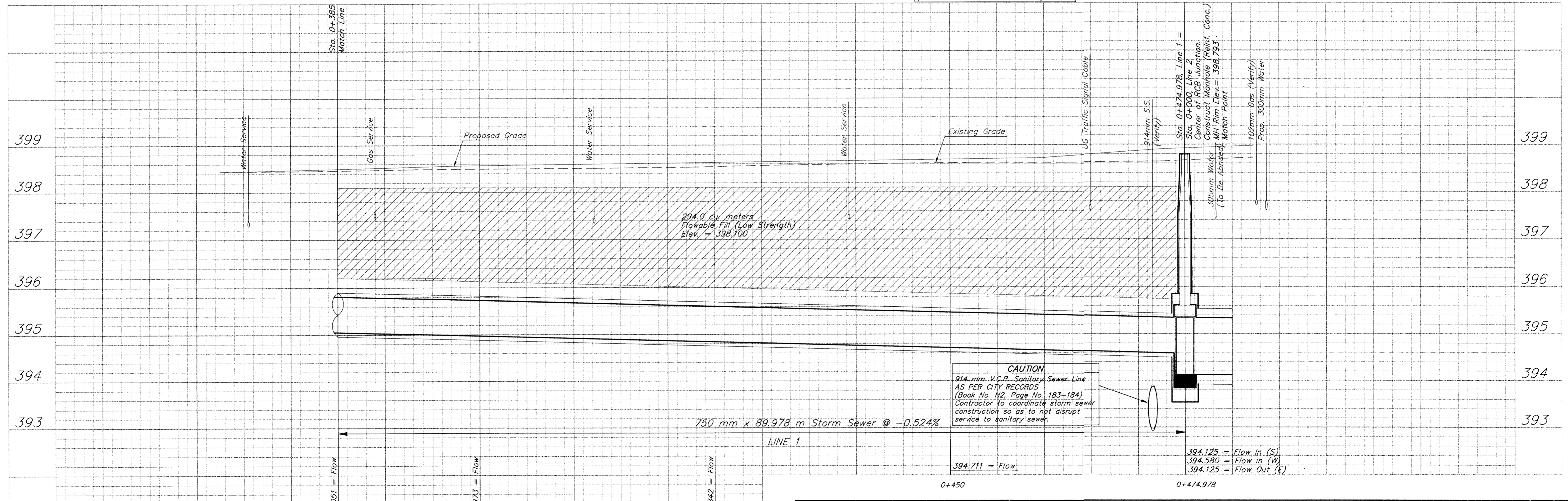
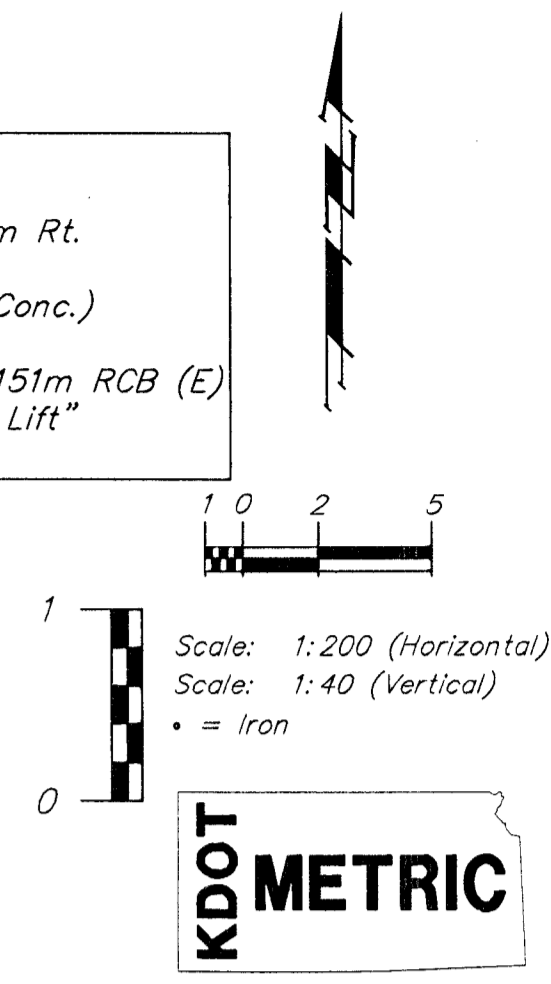
B.L. Sta. 0+802.275, 19.807 m Rt. Construct Manhole (Precast) MH Rim Elev. = 398.839 "Match Rim to Final Pvm't Lift" = Sta. 0+000, Lines 2A & 2B = Sta. 0+015.308, Line 2

B.L. Sta. 0+797.709, 20.152 m Rt. Construct Inlet (Type 2)(Special) Elev. = 398.760 Top Install 375mm x 4.579m Storm Sewer (E) (Line 2A: See Profile Sheet 67)

B.L. Sta. 0+802.266, 21.000 m Rt. Install 1.8mx1.2m x 16.500m RCB (N) Plug End w/ Brick & Mortar or Install Precast Plug from Mnfr. Cost of Plug to be SUBSIDIARY to Bid Item "Reinforced Concrete Box (1.8 x 1.2 m) (Precast)" (Line 2: See Profile Sheet 67)

Removal of Existing SWS Inlets and Existing SWS Pipe To Be Plugged and Abandoned or Removed as Required. To Be Paid For As: "Removal of Existing Structures"

Precast Manhole Stacks Shall Provide Tongue & Groove Joint at Opening of RCB. Contractor Shall Install 2 Rings of Butyl-Rubber Joint Sealing Compound at Tongue & Groove Joint. Cost shall be SUBSIDIARY to the MH Stack (Precast).



CAUTION
914 mm V.C.P. Sanitary Sewer Line AS PER CITY RECORDS (Book No. H2, Page No. 183-184) Contractor to coordinate storm sewer construction so as to not disrupt service to sanitary sewer.