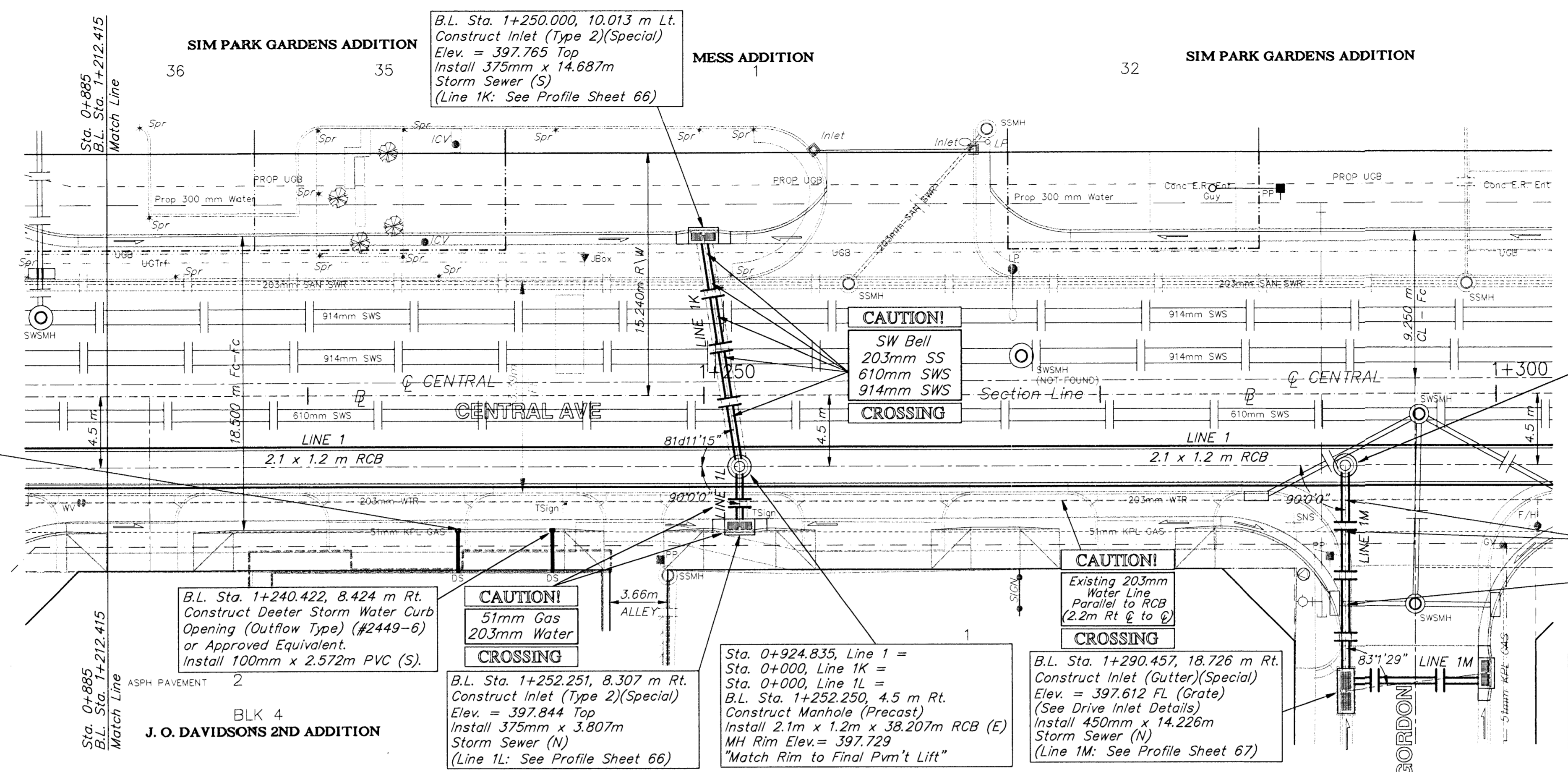


BENCHMARKS

BM #7 - "□" Top of Curb @ 48.62m North and 4.72m East of the Centerline of both St. Paul and Central. Elev. = 398.144 SI Units (1306.23 MSL Datum)

FHWA REGION NO.	STATE	PROJECT NO.	FISCAL YEAR	SHEET NO.	TOTAL SHEETS
7	KANSAS	87N-0094-01	1998	60	202



B.L. Sta. 1+234.456, 8.439 m Rt. Construct Deeter Storm Water Curb Opening (Outflow Type) (#2449-6) or Approved Equivalent. Install 100mm x 2.561m PVC (S).

B.L. Sta. 1+240.422, 8.424 m Rt. Construct Deeter Storm Water Curb Opening (Outflow Type) (#2449-6) or Approved Equivalent. Install 100mm x 2.572m PVC (S).

CAUTION!
51mm Gas
203mm Water
CROSSING

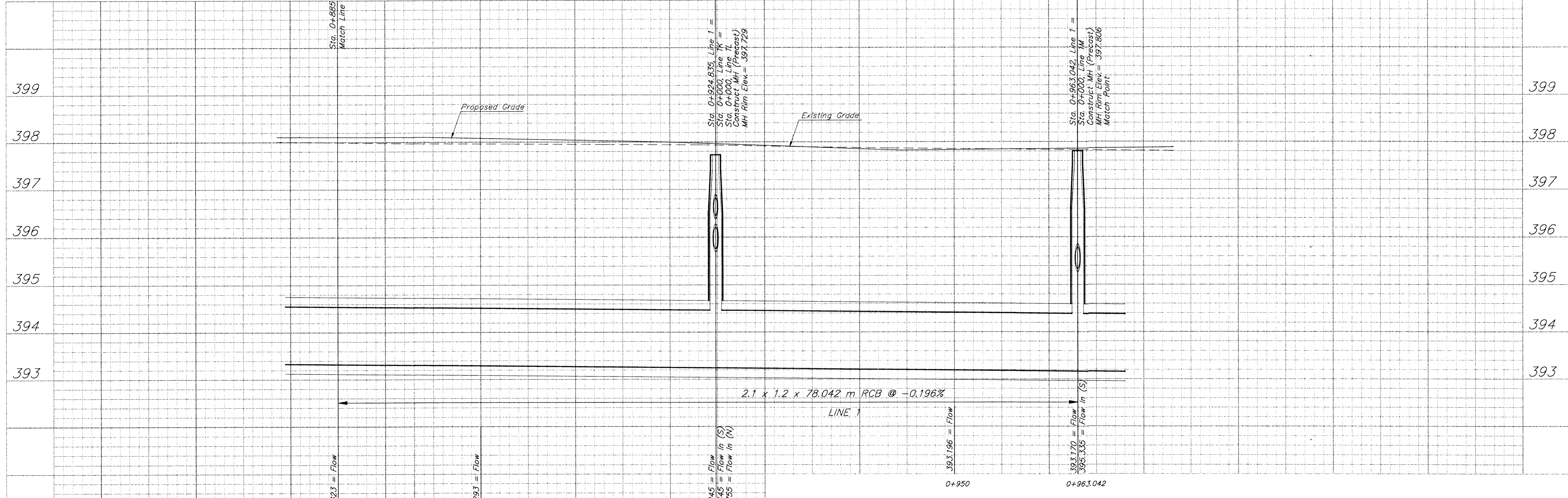
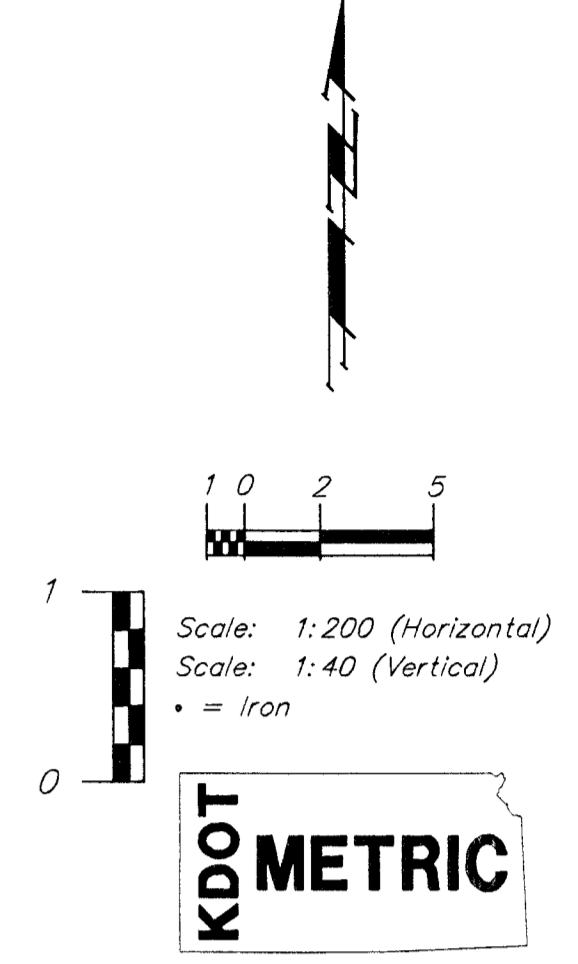
Sta. 0+924.835, Line 1 =
Sta. 0+000, Line 1K =
Sta. 0+000, Line 1L =
B.L. Sta. 1+252.250, 4.5 m Rt. Construct Manhole (Precast) Install 2.1m x 1.2m x 38.207m RCB (E) MH Rim Elev. = 397.729 "Match Rim to Final Pvm't Lift"

B.L. Sta. 1+290.457, 18.726 m Rt. Construct Inlet (Gutter)(Special) Elev. = 397.612 FL (Grate) (See Drive Inlet Details) Install 450mm x 14.226m Storm Sewer (N) (Line 1M: See Profile Sheet 67)

Sta. 0+963.042, Line 1 =
Sta. 0+000, Line 1M =
B.L. Sta. 1+290.457, 4.5 m Rt. Construct Manhole (Precast) MH Rim Elev. = 397.806 Install 2.1m x 1.2m x 104.742m RCB (E) "Match Rim to Final Pvm't Lift" Match Point

CAUTION!
305mm SWS
51mm Gas
203mm Water
CROSSING

Removal of Existing SWS Inlets and Existing SWS Pipe To Be Plugged and Abandoned or Removed as Required. To Be Paid For As: "Removal of Existing Structures"



PROJECT NUMBER 472 - 82908				
DESIGN STAFF	DRAWN STAFF	APPROVED JFB	DATE NOV 98	SCALE NOTED

PROJ NUMBER
95-05-E026
DIRECTOR
centzoo.sws
SHEET NAME
sws10.dwg

STORM SEWER IMPROVEMENTS
B.L. Sta. 1+212.415 to B.L. Sta. 1+290.457
CENTRAL AVENUE - PHASE 1 - WEST ST TO MCLEAN

BAUGHMAN COMPANY P. A.
ENGINEERING, SURVEYING, & PLANNING
316-282-7271 • 315 ELLIS • WICHITA, KANSAS 67211

SHEET **60** OF **202**