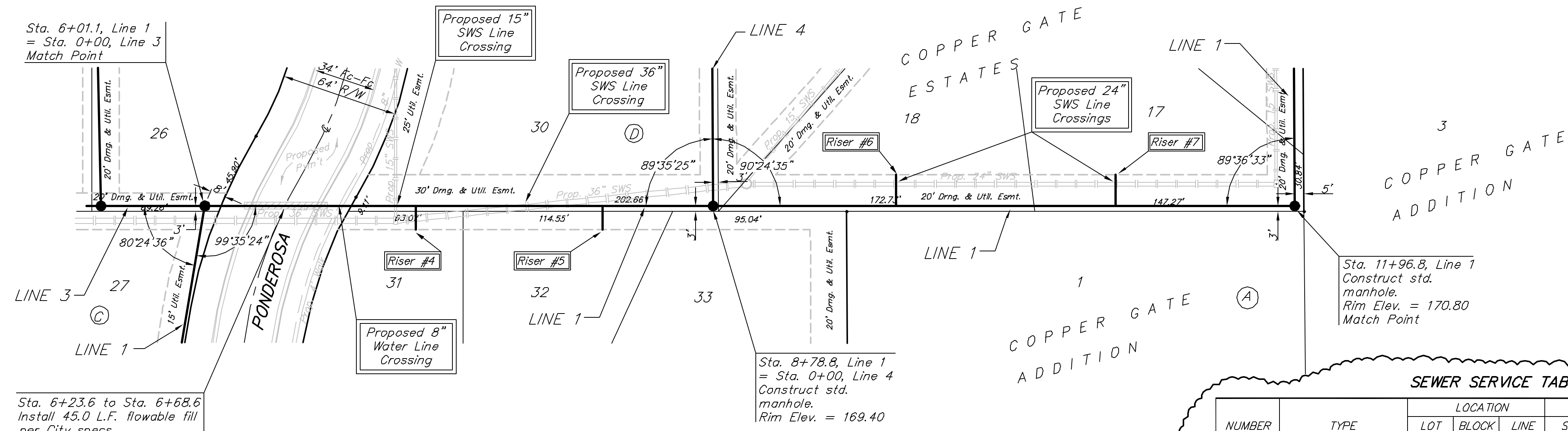


BENCHMARK:
City of Wichita benchmark at
the SE corner of intersection
of 135th Street West and 13th
Street North.
Elev. = 167.83 (City Datum)

Scale: 1" = 40' Horizontal
1" = 5' Vertical
• = Iron



Sta. 6+23.6 to Sta. 6+68.6
Install 45.0 L.F. flowable fill
per City specs.

Sta. 8+78.8, Line 1
= Sta. 0+00, Line 4
Construct std.
manhole.
Rim Elev. = 169.40

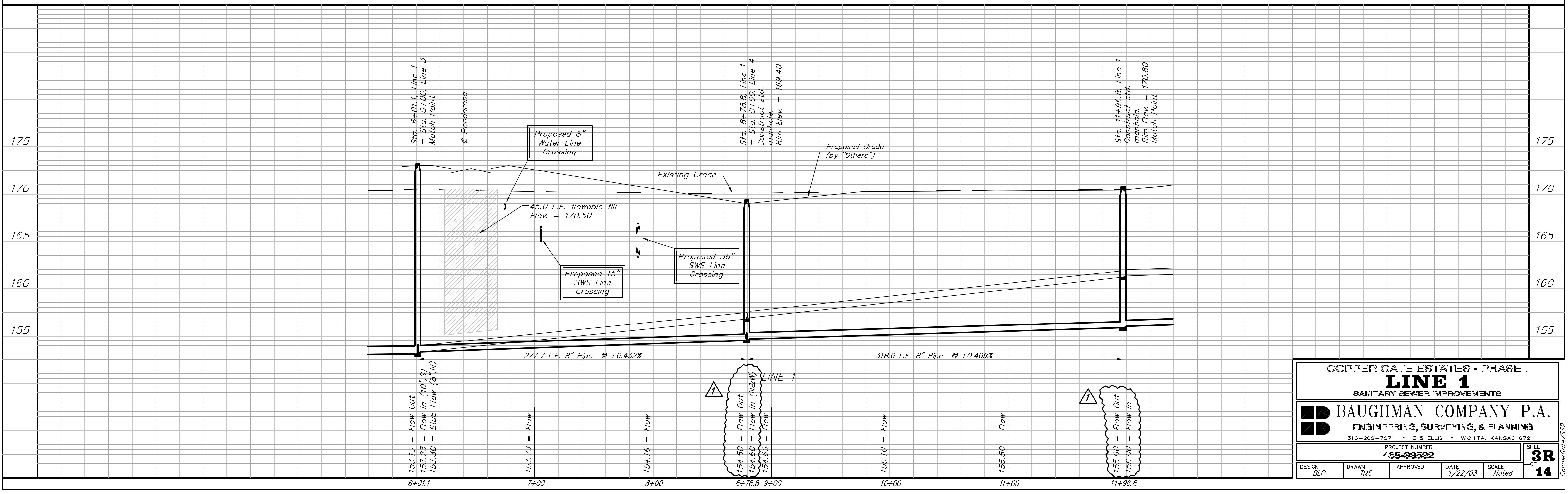
Sta. 11+96.8, Line 1
Construct std.
manhole.
Rim Elev. = 170.80
Match Point

SEWER SERVICE TABLE

NUMBER	TYPE	LOCATION			FOR INFORMATION ONLY	
		LOT NO.	BLOCK NO.	LINE NO. STATION \ DIRECTION	APPROXIMATE LENGTH 4" PIPE	
4	8" X 4" Tee Saddle	31	D	1 7+17/Rt.	13.5'	14.5'
5	8" X 4" Tee Saddle	32	D	1 8+19/Rt.	10.5'	12.0'
6	8" X 4" Tee Saddle	18	D	1 9+80/Lt.	8.0'	11.0'
7	8" X 4" Tee Saddle	17	D	1 11+00/Lt.	6.3'	11.0'

NOTE: Vertical Riser Pipe shall be extended to 2' minimum above ground water elevation and 4' maximum below proposed ground elevation.

- Revisions:
- ② Revised Riser Table 2/3/03
 - ③ Lowered Manhole Flow Elevation 2/3/03



COPPER GATE ESTATES - PHASE I
LINE 1
SANITARY SEWER IMPROVEMENTS

BAUGHMAN COMPANY P.A.
ENGINEERING, SURVEYING, & PLANNING
318-262-7271 • 315 ELLIS • WICHITA, KANSAS 67211

PROJECT NUMBER
488-93532

DESIGN: BLP | DRAWN: TMS | APPROVED: [Signature] | DATE: 1/22/03 | SCALE: Noted

SHEET **3R** OF **14**