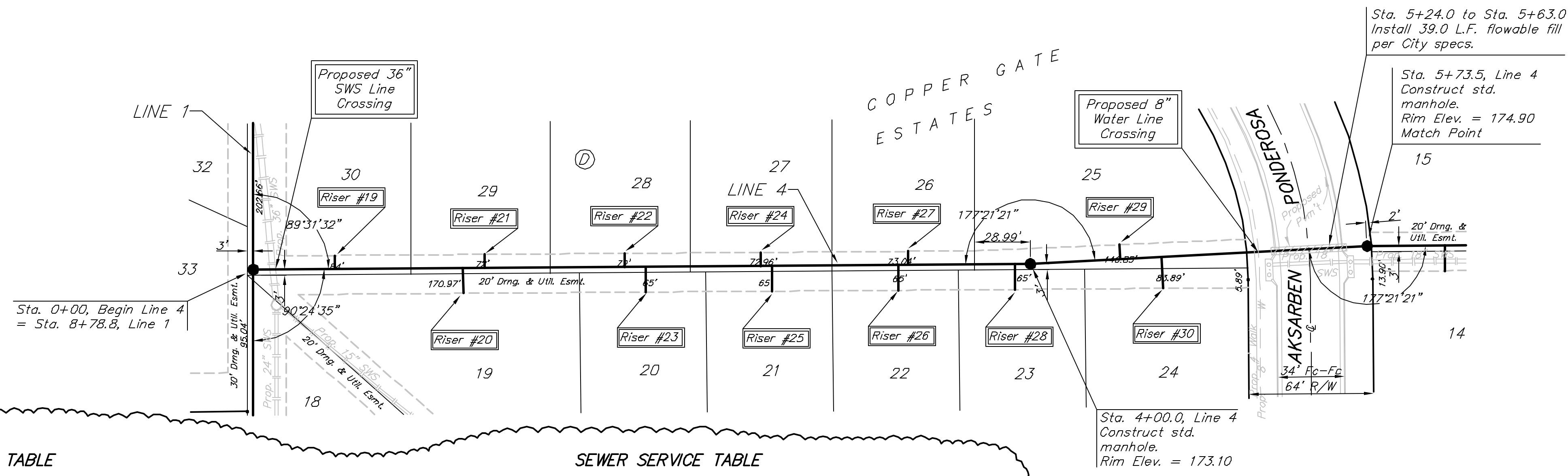


BENCHMARK:
City of Wichita benchmark at
the SE corner of intersection
of 135th Street West and 13th
Street North.
Elev. = 167.83 (City Datum)



Scale: 1" = 40' Horizontal
1" = 5' Vertical
• = Iron

SEWER SERVICE TABLE

NUMBER	TYPE	LOCATION			FOR INFORMATION ONLY		
		LOT NO.	BLOCK NO.	LINE NO.	STATION \ DIRECTION	APPROXIMATE LENGTH 4" PIPE	
19	8" X 4" Tee Saddle	30	D	4	0+42/Lt.	8'-0" 10.0'	7.0'
20	8" X 4" Tee Saddle	19	D	4	1+08/Rt.	8'-5" 10.0'	13.0'
21	8" X 4" Tee Saddle	29	D	4	1+19/Lt.	8'-5" 10.0'	7.0'
22	8" X 4" Tee Saddle	28	D	4	1+91/Lt.	9'-0" 10.0'	7.0'
23	8" X 4" Tee Saddle	20	D	4	2+02/Rt.	9'-0" 10.0'	13.0'
24	8" X 4" Tee Saddle	27	D	4	2+61/Lt.	9'-5" 10.0'	7.0'

NOTE: Vertical Riser Pipe shall be extended to 2' minimum above ground water elevation and 4' maximum below proposed ground elevation.

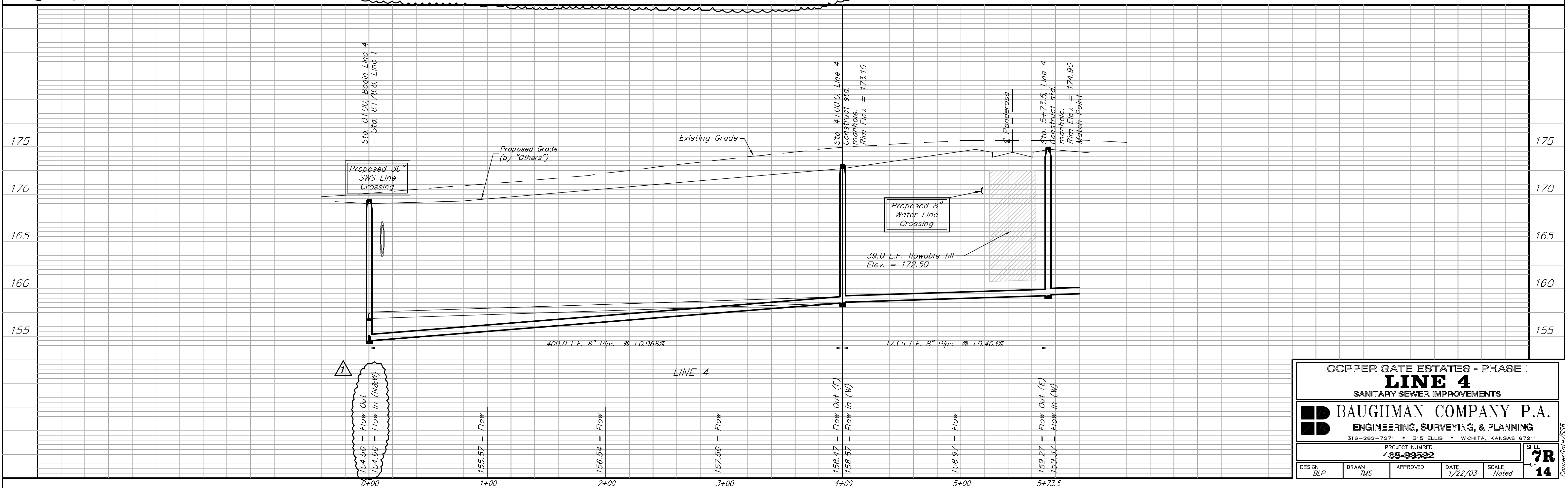
SEWER SERVICE TABLE

NUMBER	TYPE	LOCATION			FOR INFORMATION ONLY		
		LOT NO.	BLOCK NO.	LINE NO.	STATION \ DIRECTION	APPROXIMATE LENGTH 4" PIPE	
25	8" X 4" Tee Saddle	21	D	4	2+67/Rt.	9'-5" 10.0'	13'
26	8" X 4" Tee Saddle	22	D	4	3+32/Rt.	10.0'	13.0'
27	8" X 4" Tee Saddle	26	D	4	3+37/Lt.	10.0'	7.0'
28	8" X 4" Tee Saddle	23	D	4	3+92/Rt.	10.5'	13.0'
29	8" X 4" Tee Saddle	25	D	4	4+46/Lt.	11.0'	7.5'
30	8" X 4" Tee Saddle	24	D	4	4+67/Rt.	11.0'	16.5'

NOTE: Vertical Riser Pipe shall be extended to 2' minimum above ground water elevation and 4' maximum below proposed ground elevation.

Revisions:

- 2 Revised Riser Table 2/3/03
- 1 Lowered Manhole Flow Elevation 2/3/03



COPPER GATE ESTATES - PHASE I
LINE 4
SANITARY SEWER IMPROVEMENTS

BAUGHMAN COMPANY P.A.
ENGINEERING, SURVEYING, & PLANNING
318-262-7271 • 315 ELLIS • WICHITA, KANSAS 67211

PROJECT NUMBER
488-93532

DESIGN BLP	DRAWN TMS	APPROVED	DATE 1/22/03	SCALE Noted
---------------	--------------	----------	-----------------	----------------

SHEET
7R
OF
14