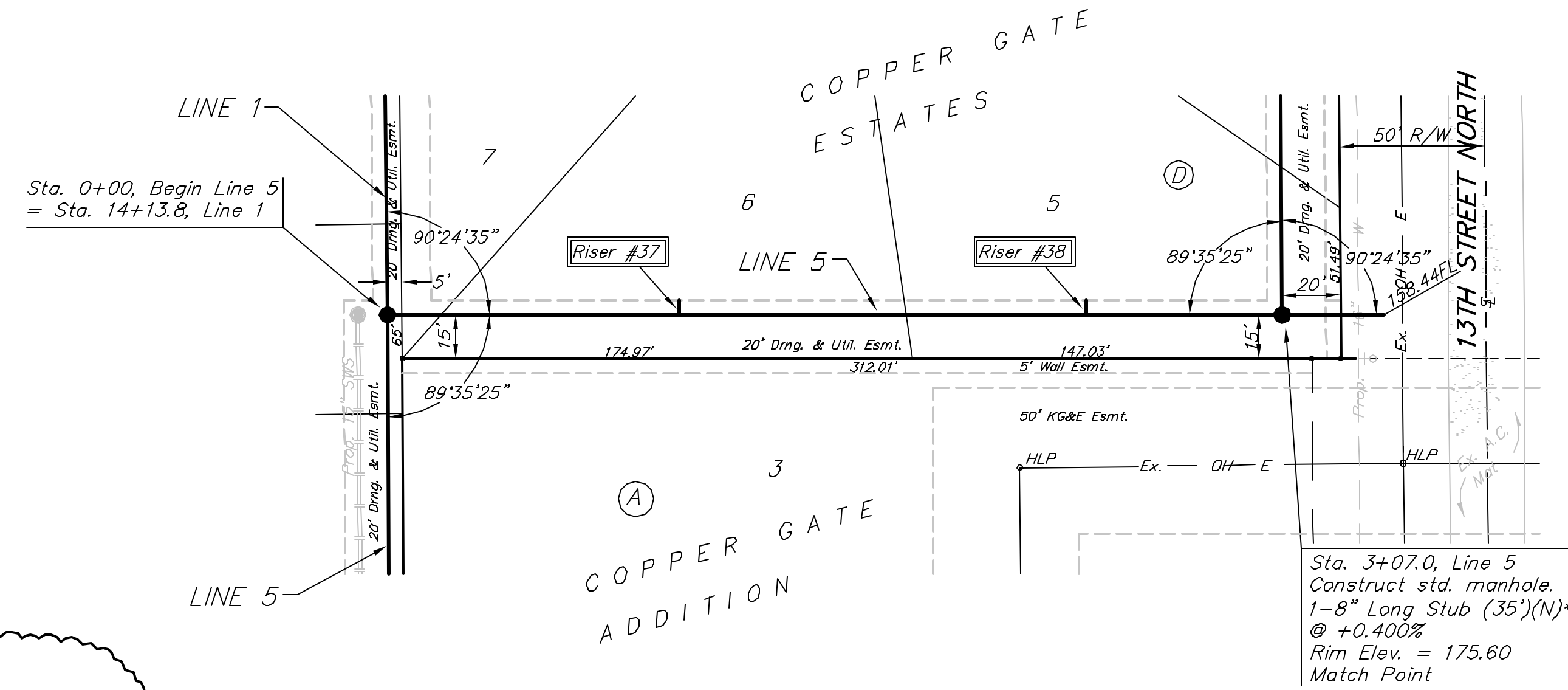


BENCHMARK:
City of Wichita benchmark at
the SE corner of intersection
of 135th Street West and 13th
Street North.
Elev. = 167.83 (City Datum)

Scale: 1" = 40' Horizontal
1" = 5' Vertical
• = Iron



Sta. 3+07.0, Line 5
Construct std. manhole,
1-8" Long Stub (35')(N)*
@ +0.400%
Rim Elev. = 175.60
Match Point

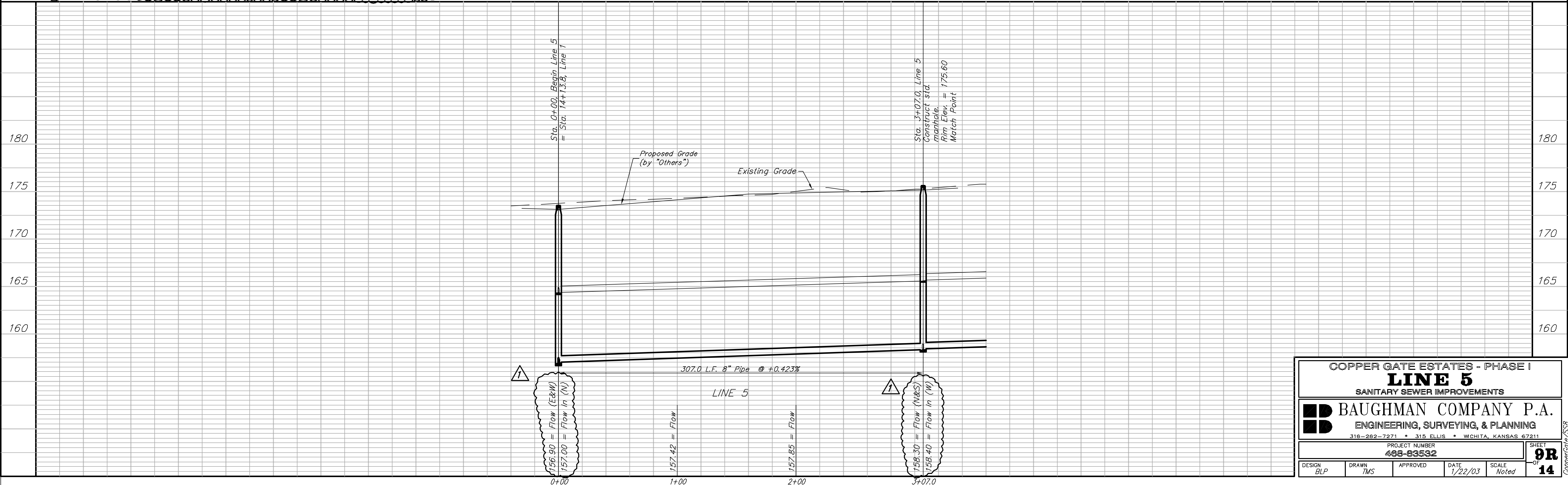
*Note:
Long Stub to be Paid as
1-8" Stub

SEWER SERVICE TABLE

NUMBER	TYPE	LOCATION			FOR INFORMATION ONLY		
		LOT NO.	BLOCK NO.	LINE NO.	STATION \ DIRECTION	APPROXIMATE LENGTH 4" PIPE VERTICAL	HORIZONTAL
37	B" X 4" Tee Saddle	6	D	5	1+00/Lt.	12.5'	5.0'
38	B" X 4" Tee Saddle	5	D	5	2+39/Lt.	13.0'	5.0'

NOTE: Vertical Riser Pipe shall be extended to 2' minimum above ground water elevation and 4' maximum below proposed ground elevation.

- Revisions:
- 2 Revised Riser Table 2/3/03
 - 1 Lowered Manhole Flow Elevation 2/3/03



COPPER GATE ESTATES - PHASE I
LINE 5
SANITARY SEWER IMPROVEMENTS

BAUGHMAN COMPANY P.A.
ENGINEERING, SURVEYING, & PLANNING
316-262-7271 • 315 ELLIS • WICHITA, KANSAS 67211

PROJECT NUMBER
468-83532

DESIGN BLP DRAWN TMS APPROVED DATE 1/22/03 SCALE Noted

SHEET **9R** OF **14**