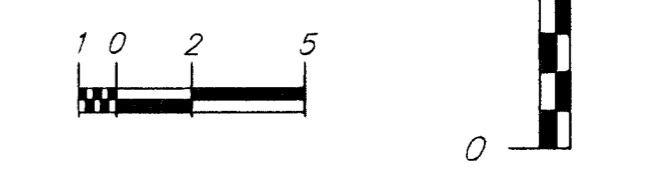


FHWA REGION NO.	STATE	PROJECT NO.	FISCAL YEAR	SHEET NO.	TOTAL SHEETS
7	KANSAS		1998	96	202

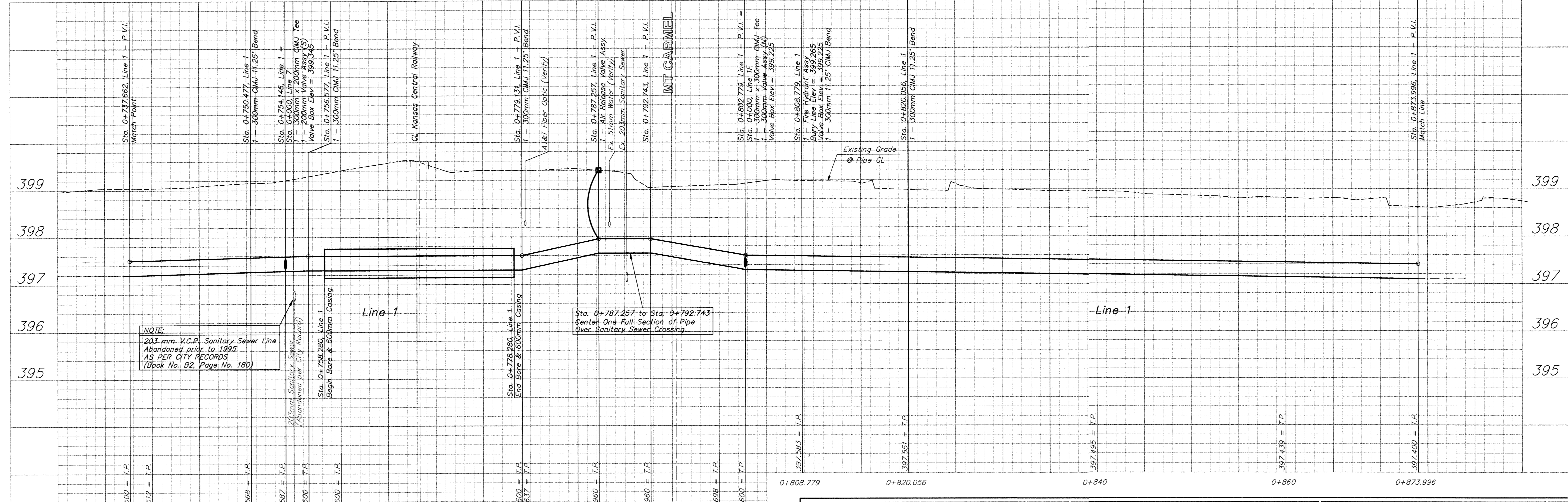
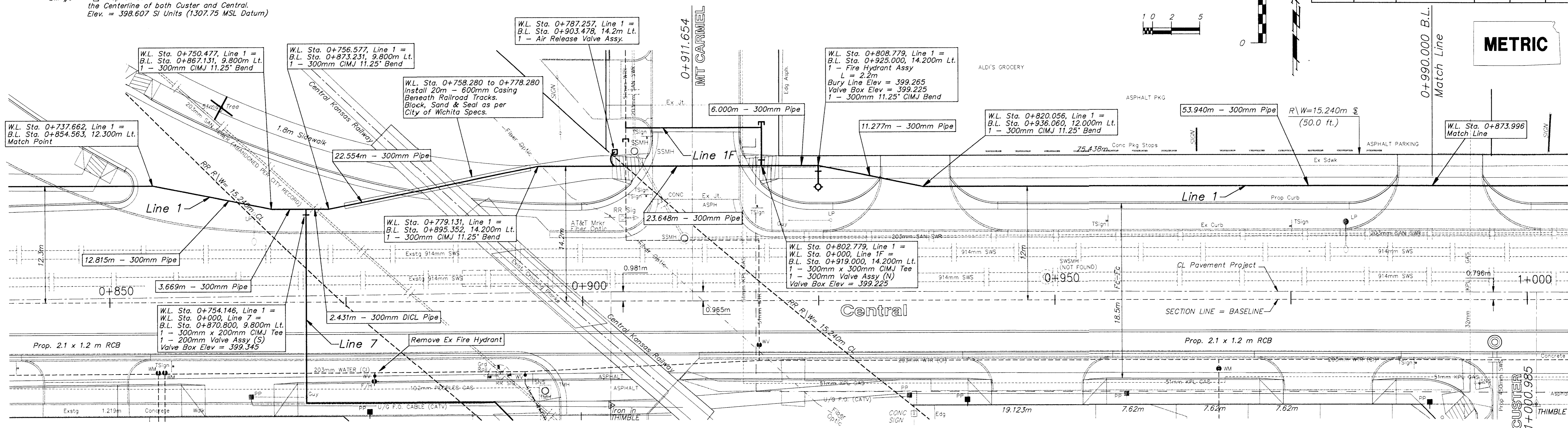
Scale: 1:200 (Horizontal)
Scale: 1:40 (Vertical)



METRIC

BENCHMARKS

BM #6 - "□" Top of Curb @ 31.09m South and 4.72m West of the Centerline of both Custer and Central.
Elev. = 398.607 SI Units (1307.75 MSL Datum)



NOTE:
203 mm V.C.P. Sanitary Sewer Line Abandoned prior to 1995 AS PER CITY RECORDS (Book No. B2, Page No. 180)

Sta. 0+787.257 to Sta. 0+792.743 Center One Full Section of Pipe Over Sanitary Sewer Crossing.

DESIGN	DRAWN	APPROVED	DATE	SCALE
JFB	STAFF	JFB	NOV 98	NOTED

PROJECT NUMBER
448-88918

WATER LINE IMPROVEMENTS - Line 1
B.L. Sta. 0+854.563 to B.L. Sta. 0+990.000
CENTRAL AVENUE - WEST ST TO MCLEAN

BAUGHMAN COMPANY P. A.
ENGINEERING, SURVEYING, & PLANNING
318-262-7271 • 315 ELLIS • WICHITA, KANSAS 67211

SHEET
96
OF
202