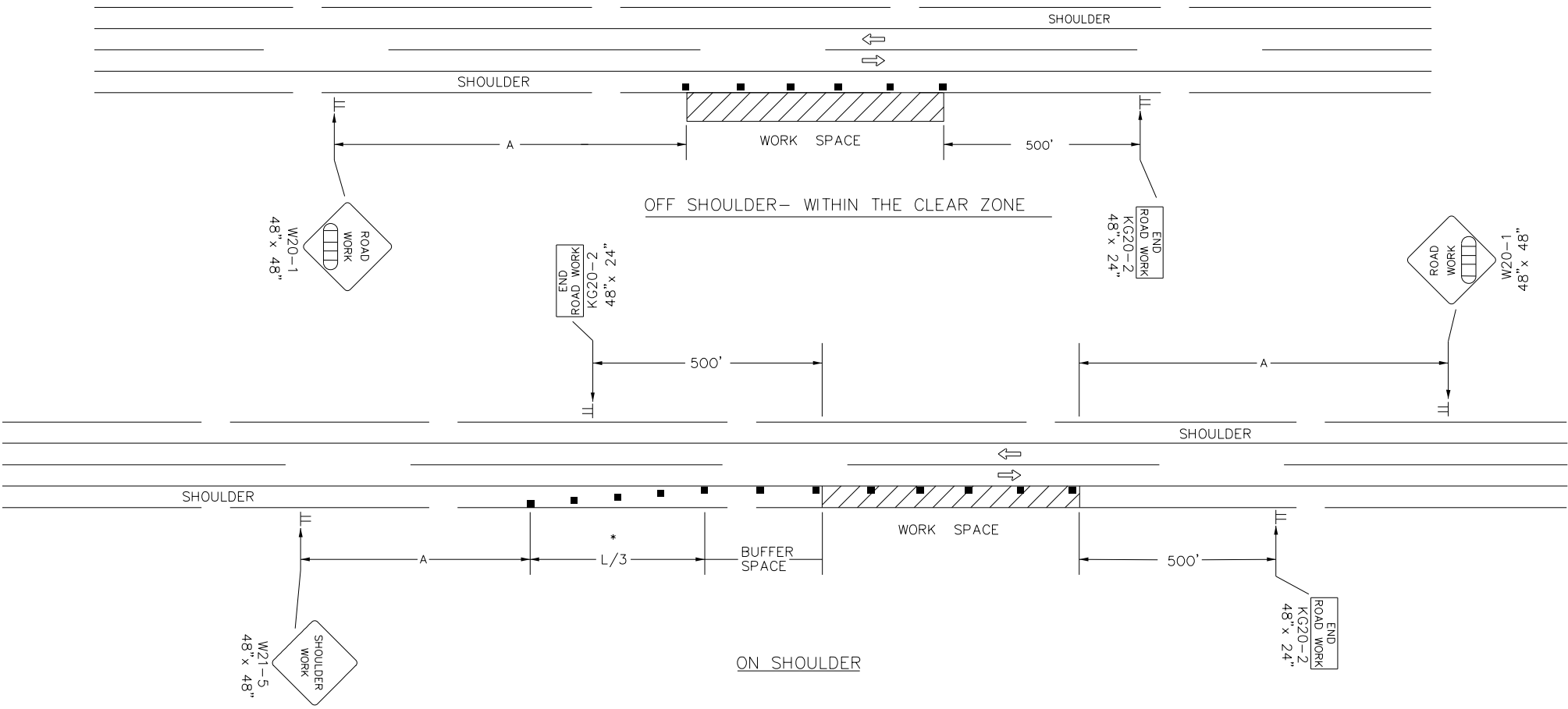


STATE	PROJECT NO.	YEAR	SHEET NO.	TOTAL SHEETS
KANSAS				

DATE	APPR.
DESCRIPTION	MARK

REFER TO STD. TE710 FOR ADDITIONAL INFORMATION ON TEMPORARY TRAFFIC CONTROL SIGNS AND SIGN SPACING.  
 REFER TO STD. TE702 FOR INFORMATION ON TAPERS AND CHANNELIZING DEVICES.  
 REFER TO STD. TE700 FOR LENGTH OF BUFFER SPACE.

NOTE:  
 NO TRAFFIC CONTROL IS REQUIRED IF THE WORK SPACE IS LOCATED OUTSIDE OF THE CLEAR ZONE.  
 FOR OPERATIONS OF 60 MINUTES OR LESS, ALL SIGNS AND CHANNELIZING DEVICES MAY BE ELIMINATED IF A VEHICLE WITH HIGH-INTENSITY ROTATING, FLASHING, OSCILLATING, OR STROBE LIGHTS IS USED.



WHEN CONCRETE BARRIER SYSTEM IS USED, PORTABLE CHANNELIZING DEVICES ARE NOT NEEDED ALONG THE TANGENT BARRIER SECTION. DELINEATION ON THE BARRIER SYSTEM IS STILL REQUIRED. SEE RD622.

\* OMIT TAPER IF PAVED SHOULDER IS LESS THAN 8' WIDE.

■ Channelizing Device  
 □□□□ AHEAD, 1500 FT, OR 1 MILE

NO.	DATE	REVISIONS	BY	APP'D
3	8-8-07	G20-2 CHANGED TO KG20-2	M.B.	A.A.A.
2	12-29-05	UPDATED END ROAD WORK SIGN DESIGNATION	M.B.	A.A.A.
1	11-19-03	CHANGED BORDER	B.H.	S.A.B.

DESIGNED BY: Larry Sample, PE				DATE: 08-13-2012
DWN BY: RES	CKD BY: LBK	APP BY: L. SAMPLE		
FILE NAME: 21_TRAFFIC CONTROL DETAILS AND NOTES.dgn				
KANSAS DEPARTMENT OF TRANSPORTATION				
TYPICAL TRAFFIC CONTROL WORK ON OR NEAR THE SHOULDER UNDIVIDED HIGHWAY (2 OR 4 LANE)				
TE720 9/1/00				
FWHA APPROVAL	8-8-07	APP'D	Anthony A. Alroboire	
DESIGNED	L.E.R.	DETAILED	B.A.H.	QUANTITIES
DESIGN CK.	DETAIL CK.	QUAN. CK.	TRACE CK.	

**ameco**  
 AMEC Earth & Environmental, Inc.  
 1129 SW Wensmaker  
 Topeka, Kansas 66604  
 Phone: (785) 272-6830  
 Fax: (785) 272-6878



UPPER LEVEE 'D', LEVEES 'K', 'L', 'M', 'N' AND 'P' TOE DRAIN INSTALLATION  
 WICHITA-VALLEY CENTER LOCAL FLOOD PROTECTION PROJECT  
 WICHITA, KANSAS  
 PREPARED FOR  
 THE CITY OF WICHITA, KANSAS  
 455 N. Main  
 Wichita, KS 67202



AMEC PROJ. NO. 5-6150-0001  
 TRAFFIC CONTROL DETAILS AND NOTES  
**C-4.04**  
 SHEET 21 OF 21