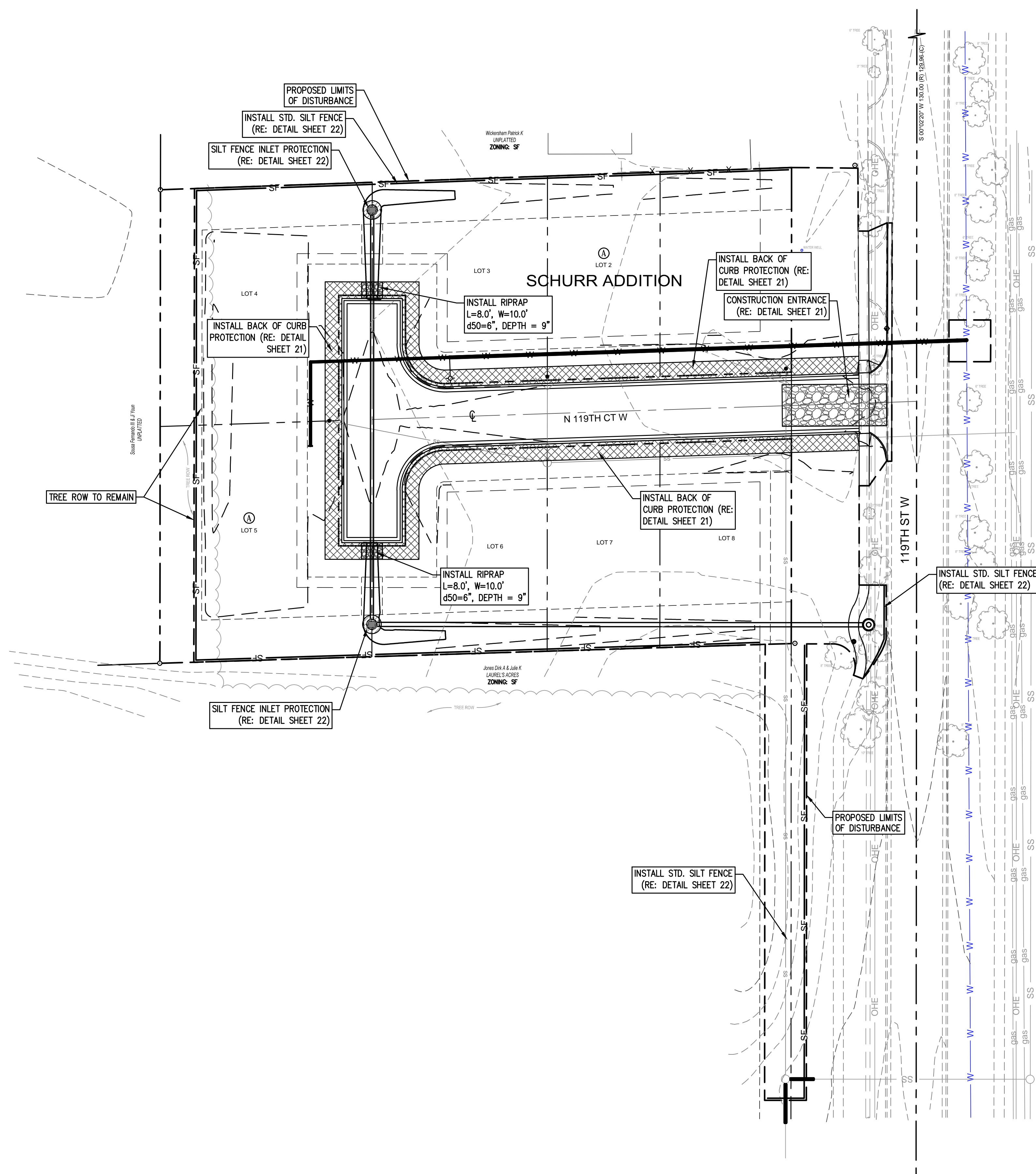
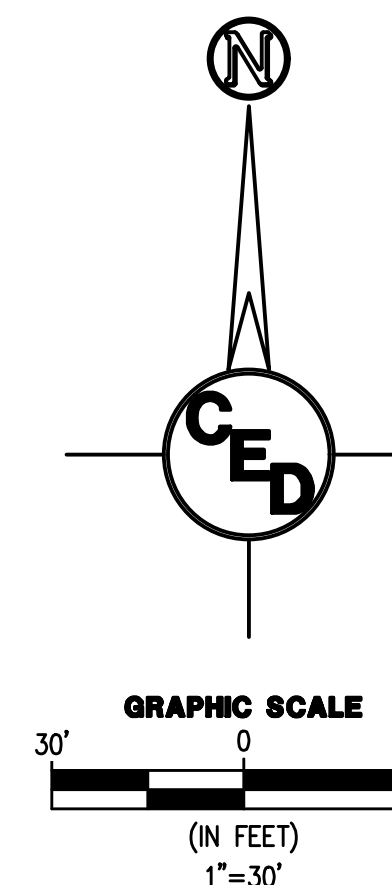


FILE LOCATION: S:\Drawing Files\Projects\20182509\DWG\Erosion.dwg TAB NAME: Erosion Control Plan USER: anquyen SAVED: 4/23/2018 11:54 AM PLOTTED: 4/24/2018 1:38 PM



EROSION CONTROL LEGEND	
	PROPOSED SILT FENCE
	PROPOSED LIMITS OF DISTURBANCE
	PROPOSED RIPRAP
	BACK OF CURB PROTECTION
	INLET PROTECTION

REV.	DESCRIPTION	DATE



SCHURR ADDITION STREET IMPROVEMENTS

WICHITA, SEDGWICK COUNTY, KS

CERTIFIED ENGINEERING DESIGN, P.A.
CIVIL ENGINEERING SERVICES



1935 WEST MAPLE STREET
WICHITA, KANSAS 67213
PH.(316)262-8808 FAX.(316)262-1669



PROJECT NO.: 20182509
ISSUE DATE: 04/24/18
CONTACT: H. FORAKER / L. MILLS
CHECKED BY: H. FORAKER / L. MILLS



HORIZONTAL CONTROL POINTS

C.P. #1	N 1696914.06 E 1606990.96	1/2" REBAR FOUND WITH PLASTIC CAP STAMPED "SAVOY CLS 141"
C.P. #2	N 1696902.35 E 1606658.09	1/2" REBAR FOUND WITH PLASTIC CAP STAMPED "SAVOY CLS 141"

BENCHMARKS

BM #1	N 1696835.98 E 1607006.26	ELV = 1356.39 (NAVD88)	SQUARE CUT ON TOP OF CURB THAT IS APPROXIMATELY 79 FEET SOUTH AND 14 FEET EAST OF THE NORTHEAST PROPERTY CORNER
BM #2	N 1687073.49 E 1607000.42	ELV = 1355.53 (NAVD88)	CHISELED X ON EAST EDGE OF STORM SEWER INLET LOCATED APPROXIMATELY 160 FEET NORTH AND 40 FEET EAST OF THE NORTHEAST PROPERTY CORNER
BM #3	N 1696651.85 E 1606997.01	ELV = 1356.07 (NAVD88)	NORTH RIM OF EXISTING STORM SEWER MANHOLE LOCATED APPROXIMATELY 37 FEET SOUTH AND 33 FEET EAST OF THE SOUTHEAST PROPERTY CORNER

SURVEY DISCLAIMER:

TOPOGRAPHIC SURVEY USED IN PREPARING PLANS WAS PROVIDED BY ALPHA LAND SURVEYS, (620) 728-0012, 216 WEST SECOND AVE., HUTCHINSON, KS. ENGINEER DOES NOT GUARANTEE SURVEY ELEVATIONS FOR ACCURACY. CONTRACTOR SHALL VERIFY ELEVATIONS AND NOTIFY ENGINEER OF ANY DISCREPANCIES.

UTILITIES SHOWN REPRESENT THE BEST INFORMATION AVAILABLE FOR DESIGN. ADDITIONAL UTILITIES MAY BE PRESENT ON THIS PROJECT. THE CONTRACTOR SHALL BE RESPONSIBLE FOR DETERMINING THE EXACT LOCATION, DEPTH AND SIZE OF ALL UNDERGROUND UTILITIES PRIOR TO CONSTRUCTION. THE CONTRACTOR SHALL BE LIABLE FOR ANY DAMAGE CAUSED BY THE FAILURE TO DO SO.

EROSION CONTROL PLAN