

KINKAID

KINKAID

EDGEMOOR

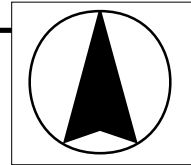
RIDGEWOOD

MCADAM

PAWNEE

5213 E. Pawnee

New Manhole 5845-252
(See Plan Sheet and Scope of Work to be Performed)



5845-025

5845-464

5845-024

5845-463

5845-023

5845-022

5845-445

5845-021

5845-241

5845-462

I-35

42"

659'

600'

24"

600'

36"

565'

507'

24"

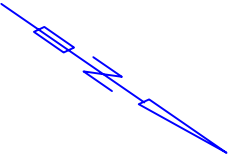
71'

320'

36"

36"

42"



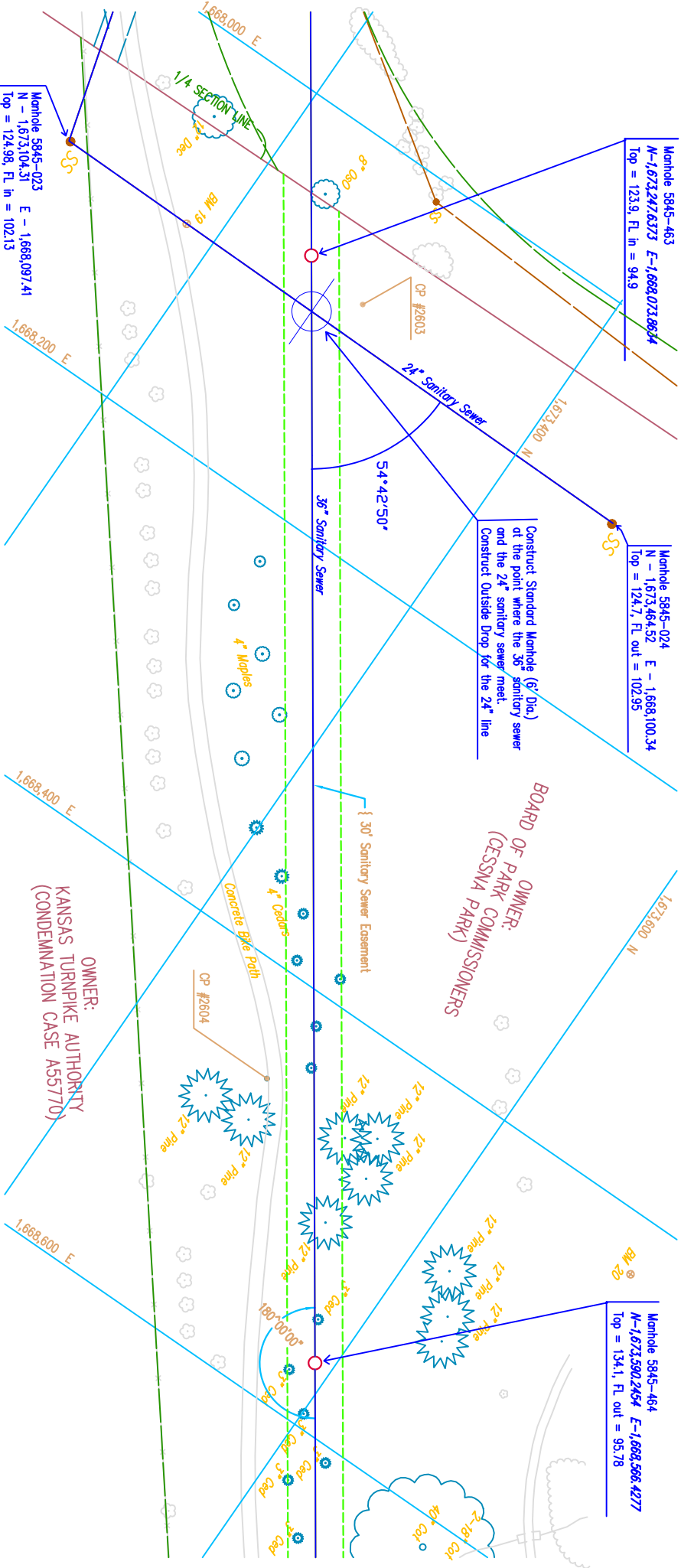
PLAN SHEET

Manhole 5845-463
N - 1,673,247.6373 E - 1,668,073.8624
Top = 123.9, Fl. in = 94.9

Manhole 5845-024
N - 1,673,464.52 E - 1,668,100.34
Top = 124.7, Fl. out = 102.95

Manhole 5845-464
N - 1,673,590.2454 E - 1,668,566.4277
Top = 134.1, Fl. out = 95.78

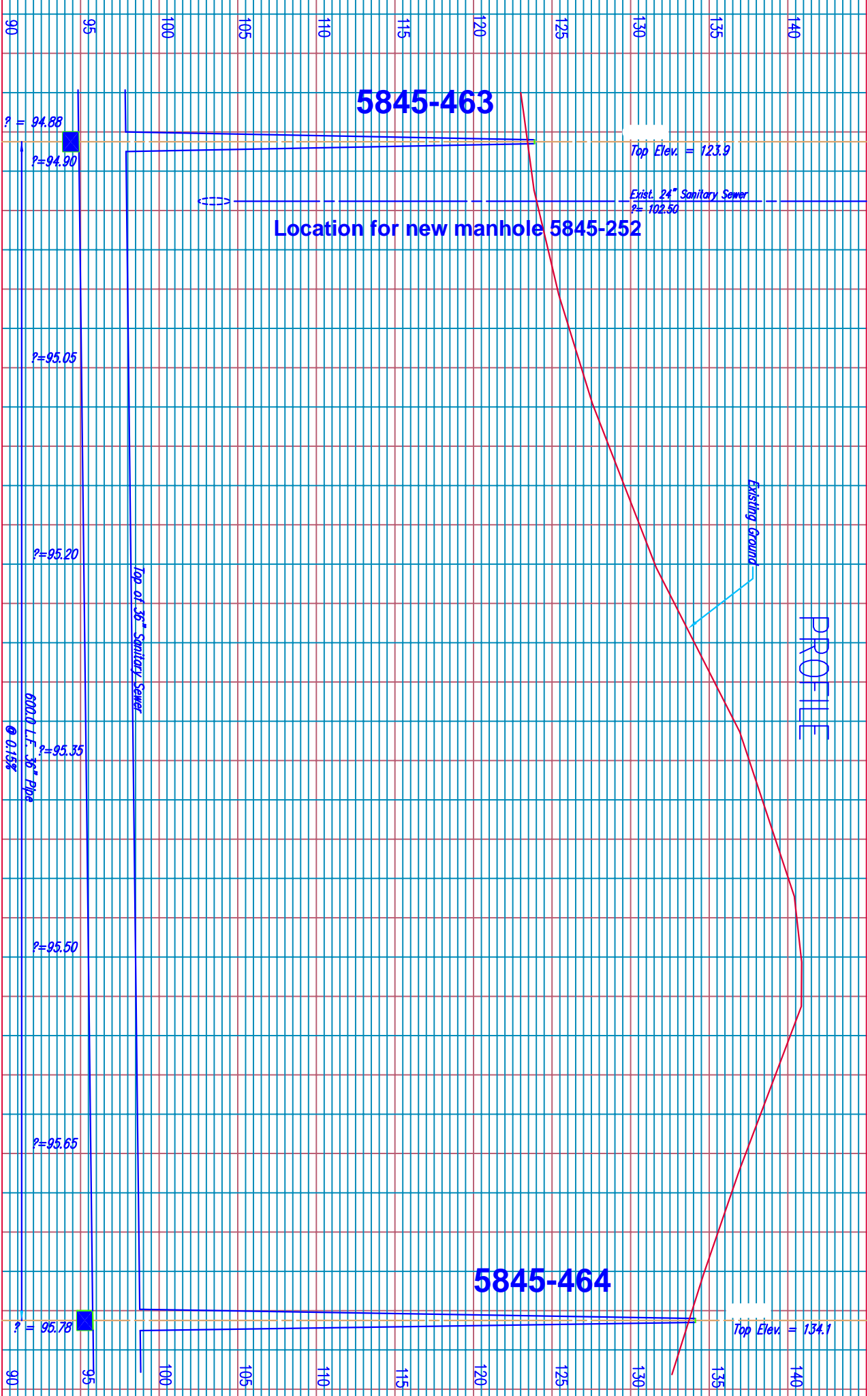
Construct Standard Manhole (6' Dia.)
at the point where the 24" sanitary sewer
and the 24" sanitary sewer meet.
Construct Outside Drop for the 24" line



Manhole 5845-023
N - 1,673,104.31 E - 1,668,097.41
Top = 124.98, Fl. in = 102.13

OWNER:
KANSAS TURNPIKE AUTHORITY
(CONDEMNATION CASE A55770)

OWNER:
BOARD OF PARK COMMISSIONERS
(CESSNA PARK)



5845-463

5845-464

Location for new manhole 5845-252

PROFILE

? = 94.88

Top Elev. = 123.9

Exist. 24" Sanitary Sewer
? = 102.50

? = 94.90

? = 95.05

? = 95.20

? = 95.35

? = 95.50

? = 95.65

6000 L.F. 36" Pipe
@ 0.15%

Top of 36" Sanitary Sewer

Existing Ground

Top Elev. = 134.1

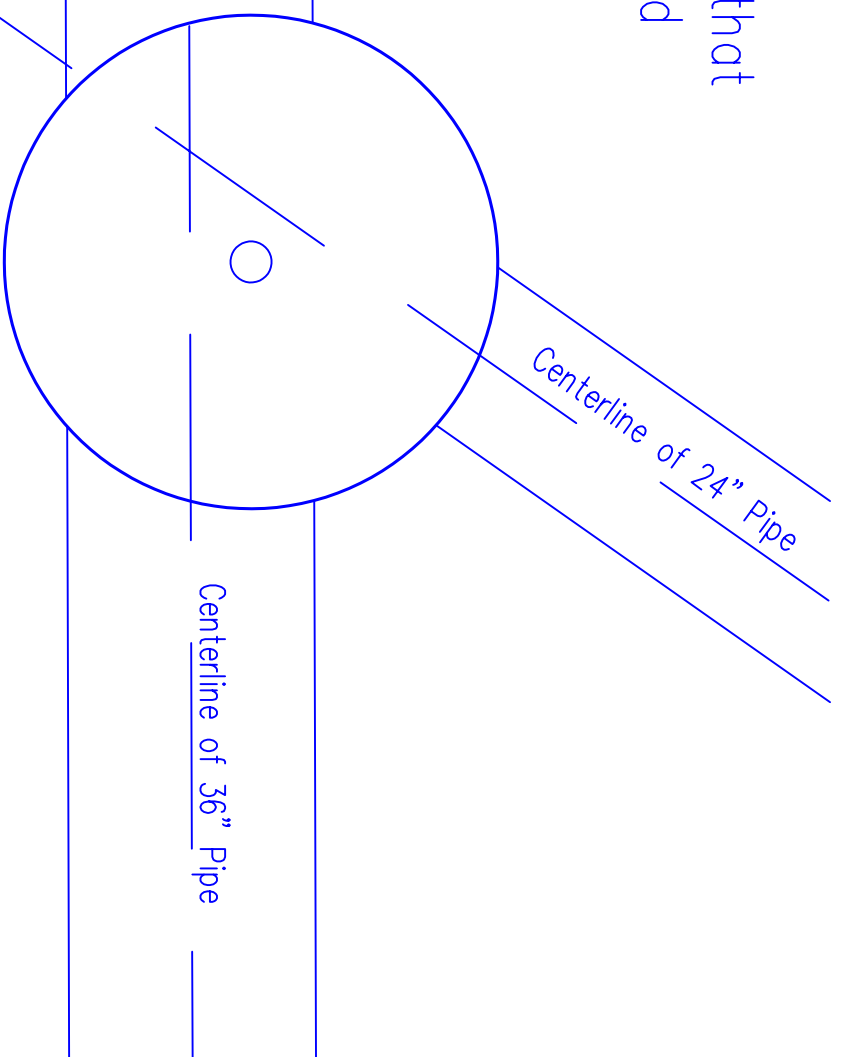
? = 95.78

SCOPE OF WORK TO BE PERFORMED

- 1) Construct Standard Manhole (6' Dia.) / with Outside Drop on 24" line (see Plan Sheet) MH 5845-252
- 2) Manhole shall be sealed with Raven 405 Ultra High Build Epoxy Coating (Manufactured by Raven Lining Systems, Inc., Tulsa, OK, 1-800-324-2810)
- 3) Contractor to verify the location of the proposed manhole by field survey
- 4) Seal off both ends of the 24" pipe between new Manhole 5845-252 and Manhole 5845-023 (do not fill the pipe)
- 5) Seal off both ends of the 24" pipe between Manhole 5845-023 and Manhole 5845-022 (do not fill the pipe)
- 6) Abandon 24" Pipe between Manhole 5845-022 and Manhole 5845-445, per City Spec (fill with Flowable Fill) (segment crossing the Gypsum Creek)
- 7) Seal off both ends of the 24" pipe between Manhole 5845-445 and Manhole 5845-021 (do not fill the pipe)
- 8) Seal off both ends of the 18" pipe between Manhole 5845-445 and Manhole 5845-241 (do not fill the pipe)
- 9) Manhole 5845-023 shall be "taken out of service" by removing the top three feet of the manhole and capping and sealing the manhole without filling it.
- 10) Manhole 5845-022 shall be "taken out of service" by removing the top three feet of the manhole and capping and sealing the manhole without filling it.
- 11) Manhole 5845-445 to remain in place

Other Notes: Contractor may obtain their own bore test at the proposed manhole location to verify soil conditions

Contractor to offset the manhole so that the distance between the 24" pipe and the 36" pipe is approx. 1.5 ft.



Based on the coordinates of the manholes, the center of the new manhole should be approx. N – 1,673,266, E – 1,668,100
Contractor to determine the exact location by field survey