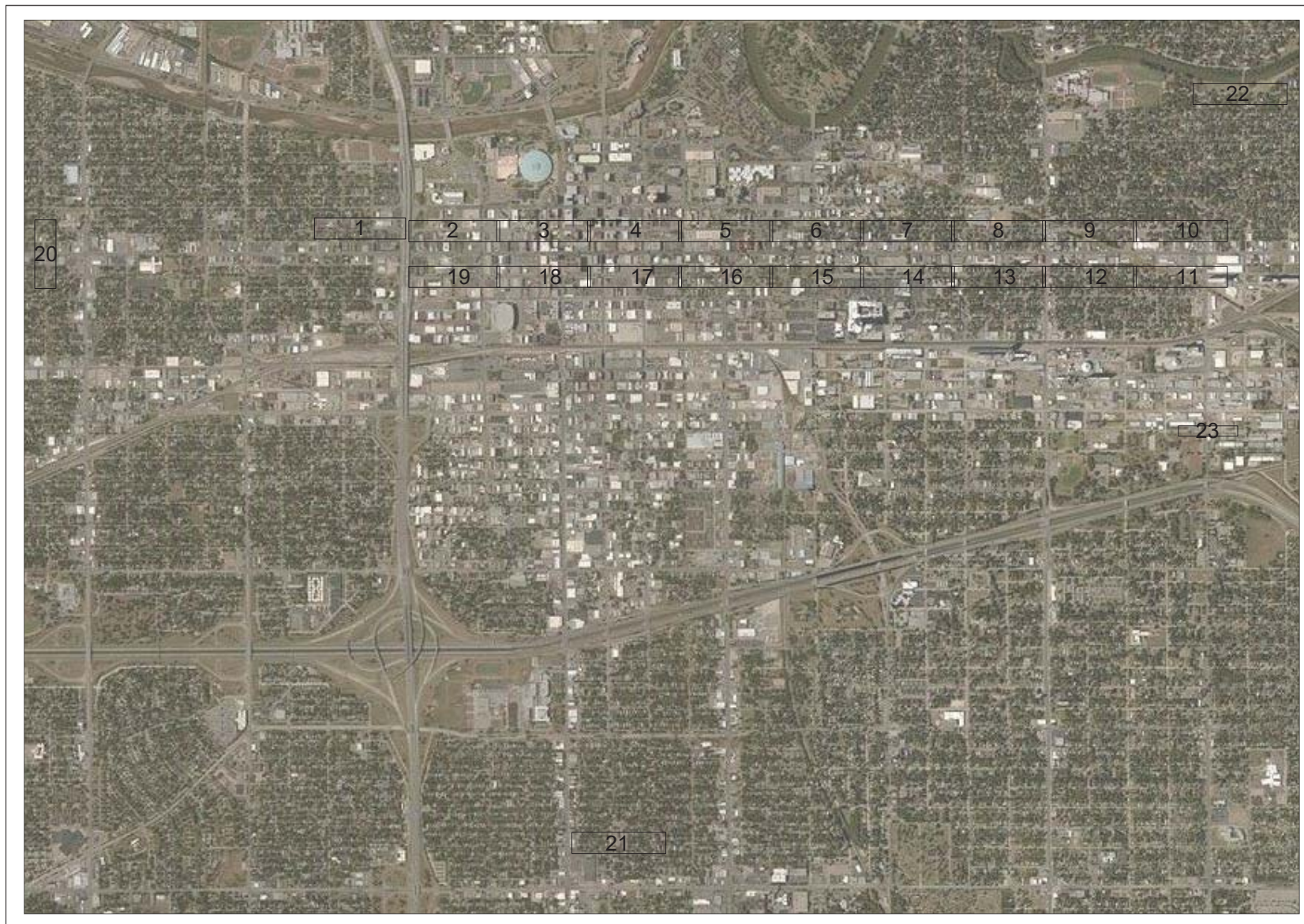


# CITY OF WICHITA WAYFINDING PLAN

MARKET AND TOPEKA STREET

City Project No. 472-85465

City OCA No. 615501



### INDEX OF SHEET:

- 0 TITLE SHEET
- 1-23 WAYFINDING PLACEMENT PLAN
- 24 GRAPHIC STANDARDS
- 25-26 SIGN DESIGN INTENT

SIGN ID	TRAVEL DIRECTION	SIGN TYPE	ARROW DIRECTION	DESTINATION NAME	MILES	NOTES
1	Northbound	On Street Directional	S	Old Town	1.2	
			S	City Hall	1.3	
			S	NOMAD District	3.6	
			S	Old Town	1.1	
2	Northbound	On Street Directional	S	Delano Shopping District	1.2	
			S	College Hill	3.2	
			S	NOMAD District	2.8	
3	Northbound	On Street Directional	R	Arma	0.3	
			L	Stadium	0.4	
			R	Transit Center	0.1	
4	Northbound	On Street Directional	L	Historic Museum	0.1	
			L	Performing Arts Center	0.2	
			S	TrAMM	0.4	
5	Northbound	On Street Directional	S	Riverside Park	0.9	
			L	City Hall	0.2	
			S	NOMAD District	1.8	
6	Northbound	On Street Directional	S	Mudans Recreation Center	1.4	
			L	Old Park	1.0	
			S	NOMAD District	0.9	
7	Northbound	On Street Directional	S	Libbe Arkansas River Path	1.0	
			S	Mudans Recreation Center	1.2	
			S	Libbe Arkansas River Path	0.5	
8	Westbound	On Street Directional	S	Woodland Park	0.9	
			R	NOMAD District	0.5	
			S	Mudans Recreation Center	0.7	
9	Eastbound	On Street Directional	R	St. Francis Medical District	1.1	
			R	Old Town	2.3	
			S	Libbe Arkansas River Path	0.7	
10	Westbound	On Street Directional	S	NOMAD District	0.7	
			L	St. Francis Medical District	1.1	
			S	St. Francis Medical District	1.0	
			S	City Hall	1.6	
			S	Old Town	2.2	
			S	St. Francis Medical District	0.6	
12	Southbound	On Street Directional	S	Heath-Cline	0.6	
			S	Old Town	1.6	
			S	City Hall	0.8	
13	Southbound	On Street Directional	S	Old Town	1.1	
			L	St. Francis Medical District	0.1	
			S	TrAMM	0.4	
14	Southbound	On Street Directional	S	Old Town	1.0	
			R	Central Riverside Park	0.6	
			S	City Hall	0.4	
			S	Arma	0.5	
			R	TrAMM	0.3	
			S	Old Town	0.8	
16	Southbound	On Street Directional	S	Arma	0.8	
			R	City Hall	0.3	
			S	Transit Center	0.1	
			S	Arma	0.5	
			R	Performing Arts Center	0.3	
18	Southbound	On Street Directional	S	South-Central Neighborhood	1.6	
			R	Stadium	0.5	
			L	Arma	0.1	
			R	Healthy Foot	0.1	
19	Southbound	Turn Sign				
			R	Healthy Foot	0.1	
20	Westbound	Turn Sign				
			R	Healthy Foot	0.1	
21	Eastbound	On Street Directional	S	College Hill	0.7	
			R	Healthy Foot	0.1	
			L	Woodland Park	0.5	
22	Northbound	Turn Sign				
			R	Woodland Park	0.5	
23	Westbound	Turn Sign				
			R	Mudans Recreation Center	0.1	
24	Eastbound	Turn Sign				
			R	Mudans Recreation Center	0.1	

### VICINITY MAP



**Project Owners:**  
City of Wichita, Kansas  
Department of Public Works & Utilities  
455 North Main, 8th Floor  
Wichita, Kansas 67202



DESIGNED:	REVISIONS
REVIEWED:	NO DATE ITEM
DRAWN:	
PROJECT NO.	
SCALE AS SHOWN	



711 SE Grand Avenue  
Portland, Oregon 97211  
p:503.230.9862 f:503.230.9862

**KEY NOTES:**  
Reference Wichita Wayfinding Plan for dimensions, materials, and construction notes for the roadway directional signs.  
Reference Wichita Wayfinding Plan for all colors, text, and logo information.  
All improvements shall occur within public right of way. City to verify and approve final location.  
City to field verify location prior to installation.  
Contractor to verify exact locations for all underground and overhead utilities prior to installations and avoid all conflicts.  
Contractor to calculate all mileage after stake locations are approved by project owner.

**City of Wichita**  
**Master Bicycle Plan**  
Wichita, Kansas

SHEET NO.

0 of 26