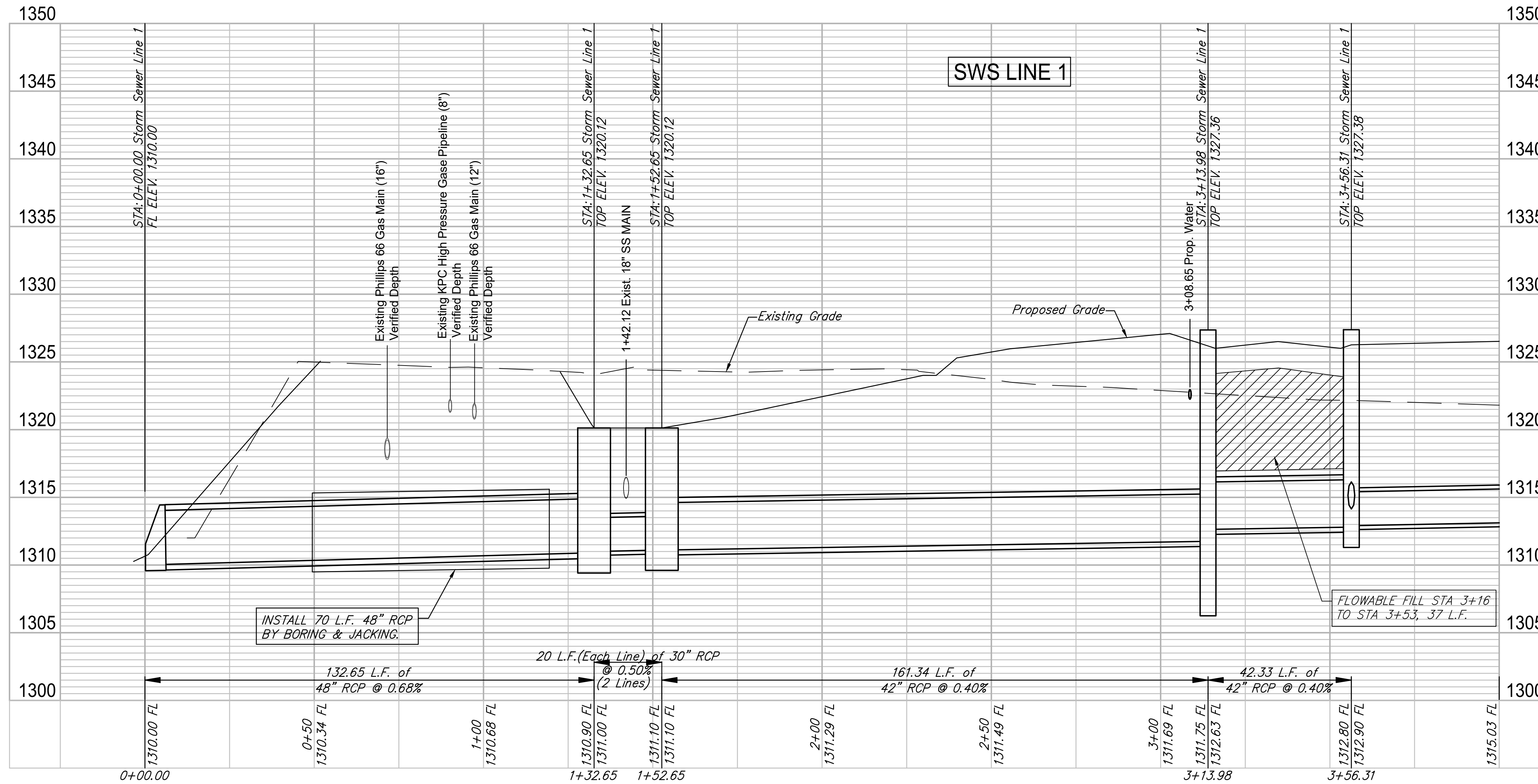
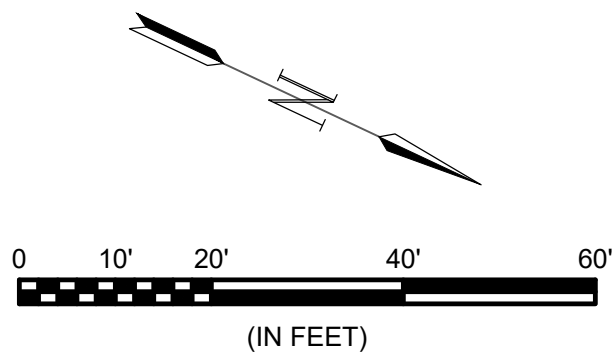
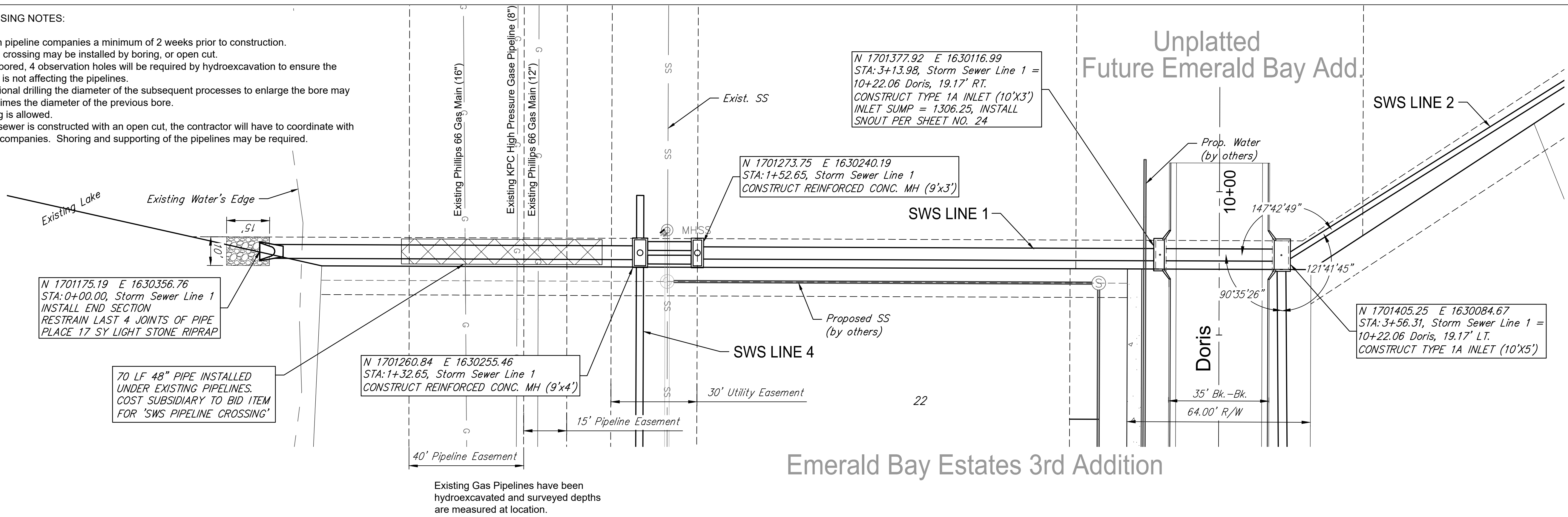


PIPELINE CROSSING NOTES:

- Contact both pipeline companies a minimum of 2 weeks prior to construction.
- The pipeline crossing may be installed by boring, or open cut.
- If the line is bored, 4 observation holes will be required by hydroexcavation to ensure the construction is not affecting the pipelines.
- When directional drilling the diameter of the subsequent processes to enlarge the bore may only be 1.5 times the diameter of the previous bore.
- Auger boring is allowed.
- If the storm sewer is constructed with an open cut, the contractor will have to coordinate with the pipeline companies. Shoring and supporting of the pipelines may be required.



File: L:\2017\17264883 - Emerald Bay 3rd Improvements\Drawings\C3D\SWD\10 SWS Line 1.dwg Last Save: 3/29/2018 8:49 AM Last saved by: EJGlover
 Last plotted by: Glover, Eric J. Plot Style: --- Plot Scale: 1:2.5849 Plot Date: 4/17/2018 10:48 AM Plotter used: None

© 2018 GARVER, LLC
 THIS DOCUMENT, ALONG WITH THE IDEAS AND DESIGNS CONVEYED HEREIN, SHALL BE CONSIDERED INSTRUMENTS OF PROFESSIONAL SERVICE AND ARE PROPERTY OF GARVER, LLC. ANY USE, REPRODUCTION, OR DISTRIBUTION OF THIS DOCUMENT, ALONG WITH THE IDEAS AND DESIGN CONTAINED HEREIN, IS PROHIBITED UNLESS AUTHORIZED IN WRITING BY GARVER, LLC OR EXPLICITLY ALLOWED IN THE GOVERNING PROFESSIONAL SERVICES AGREEMENT FOR THIS WORK.

REV.	DATE	DESCRIPTION	BY

City of Wichita, KS
 Project #: 468-85241
 OCA: 751566
 Emerald Bay 3rd Storm Water Drain Project

SWS Line 1 (1 OF 3)

JOB NO.: 17264883
 DATE: Feb. 2018
 DESIGNED BY: EJG
 DRAWN BY: EJG

BAR IS ONE INCH ON ORIGINAL DRAWING
 IF NOT ONE INCH ON THIS SHEET, ADJUST SCALES ACCORDINGLY.

SHEET NUMBER

TOTAL SHEETS **12** OF **41**