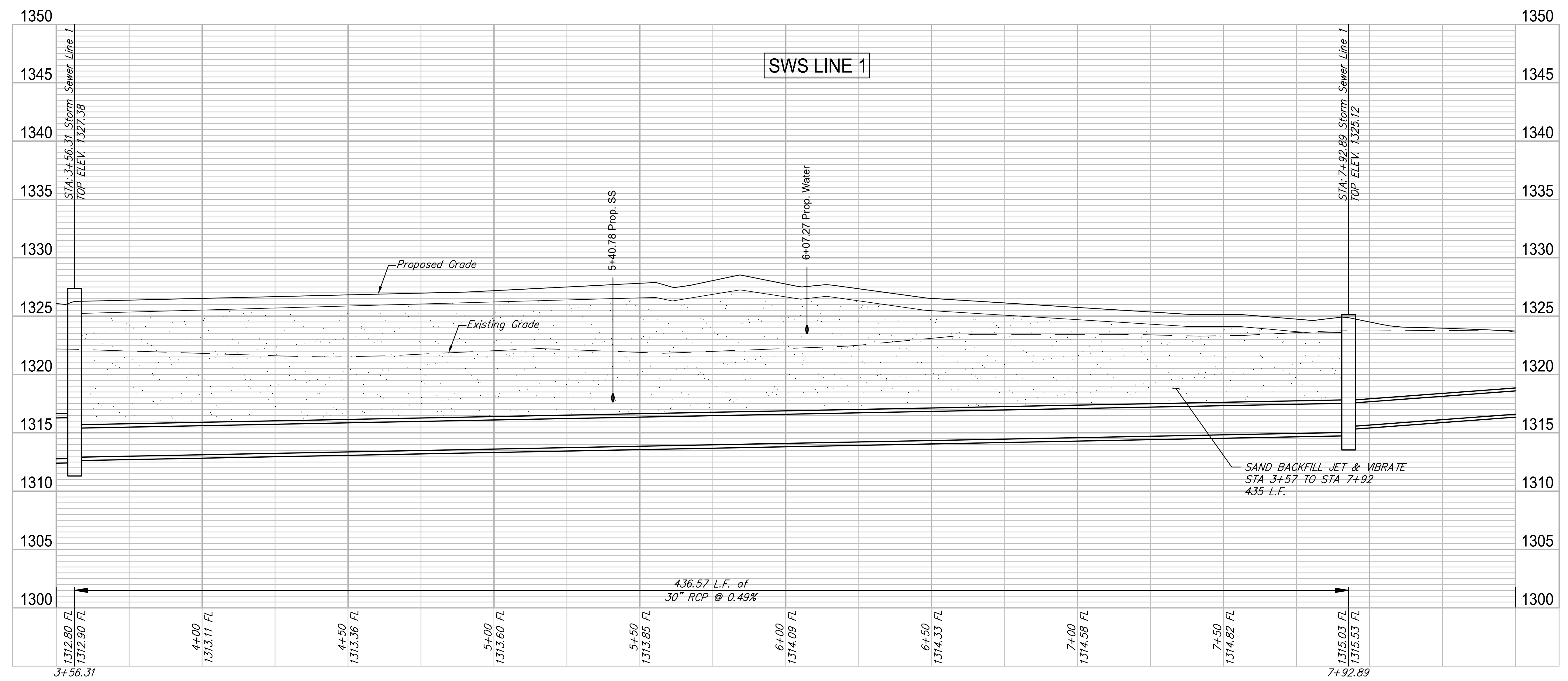
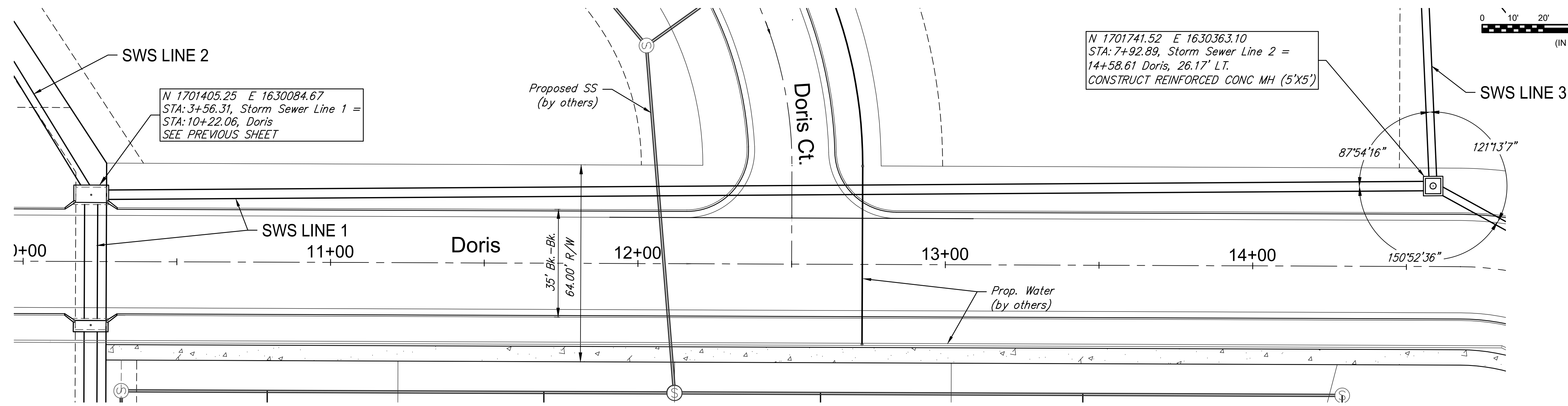
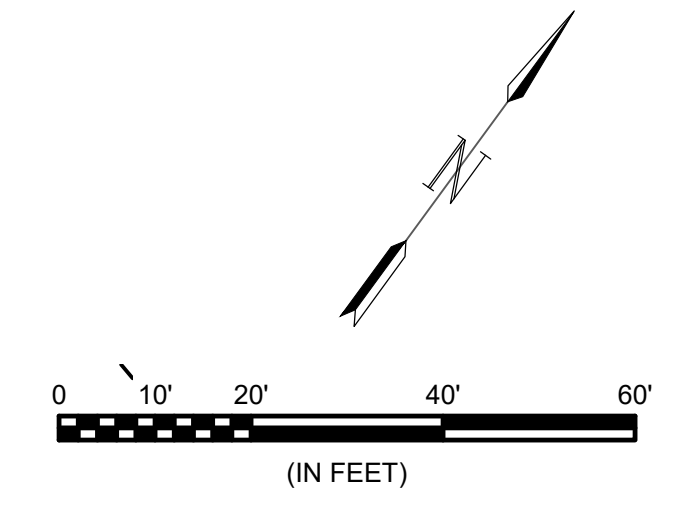


# Emerald Bay Estates 3rd Addition



© 2018 GARVER, LLC  
 THIS DOCUMENT, ALONG WITH THE IDEAS AND DESIGNS CONVEYED HEREIN, SHALL BE CONSIDERED INSTRUMENTS OF PROFESSIONAL SERVICE AND ARE PROPERTY OF GARVER, LLC. ANY USE, REPRODUCTION, OR DISTRIBUTION OF THIS DOCUMENT, ALONG WITH THE IDEAS AND DESIGN CONTAINED HEREIN, IS PROHIBITED UNLESS AUTHORIZED IN WRITING BY GARVER, LLC OR EXPLICITLY ALLOWED IN THE GOVERNING PROFESSIONAL SERVICES AGREEMENT FOR THIS WORK.



File: L:\2017\17264883 - Emerald Bay 3rd Improvements\Drawings\C3D\SWD\11 SWS Line 1 (2).dwg Last Save: 4/17/2018 9:28 AM Last saved by: DRStandrich  
 Last plotted by: Glover, Eric J. Plot Style: --- Plot Scale: 1:2.5849 Plot Date: 4/17/2018 10:48 AM Plotter used: None

REV.	DATE	DESCRIPTION	BY

City of Wichita, KS  
 Project #: 468-85241  
 OCA: 751566  
 Emerald Bay 3rd  
 Storm Water Drain Project

**SWS Line 1**  
 (2 of 3)

JOB NO.: 17264883  
 DATE: Feb. 2018  
 DESIGNED BY: EJJ  
 DRAWN BY: EJJ

BAR IS ONE INCH ON ORIGINAL DRAWING  
 0 1" = 1' IF NOT ONE INCH ON THIS SHEET, ADJUST SCALES ACCORDINGLY.

SHEET NUMBER  
 TOTAL SHEETS **13** OF **41**