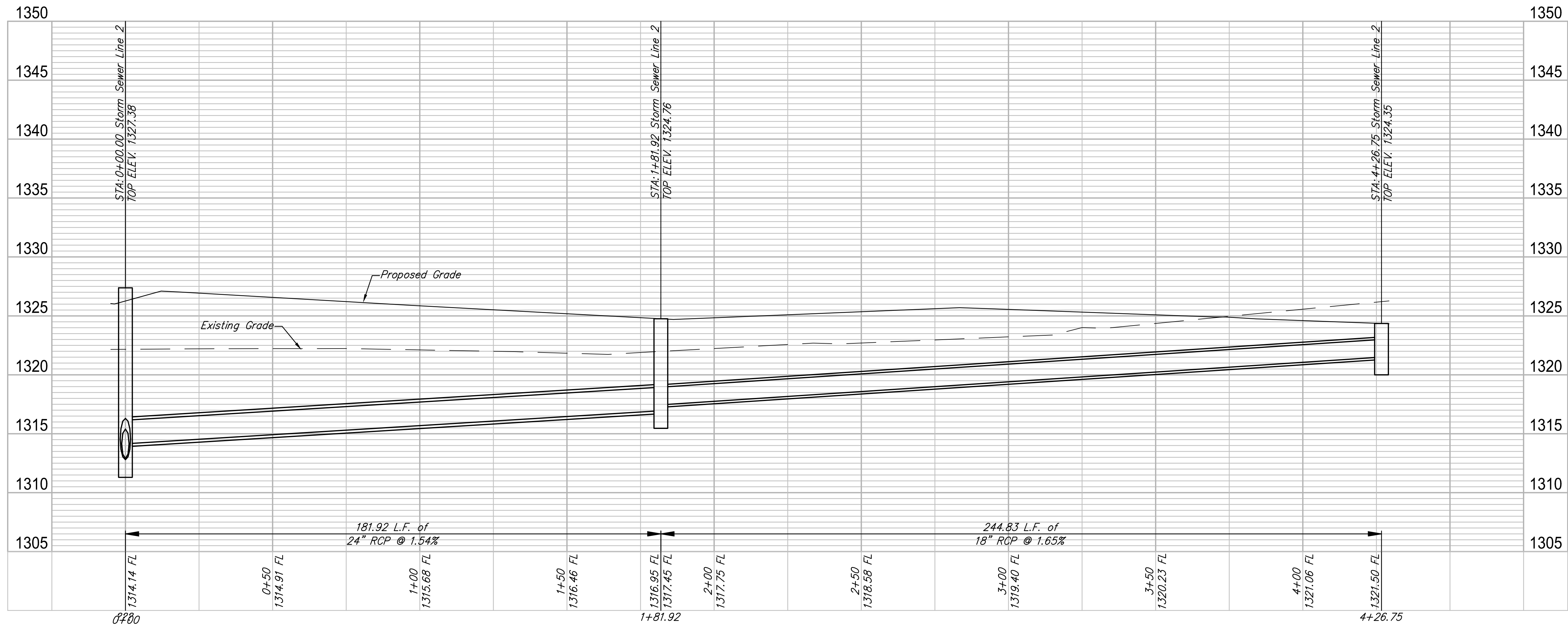
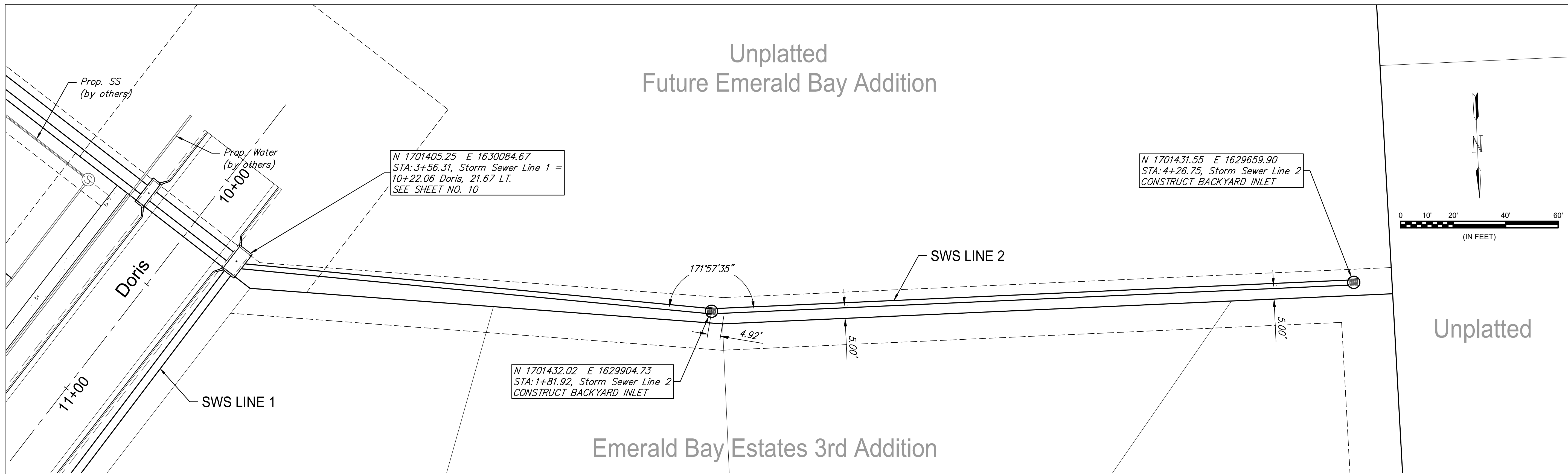
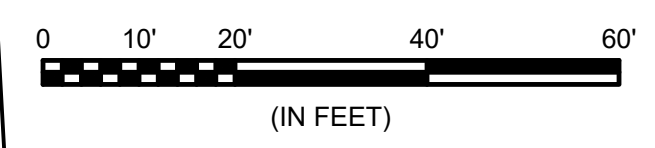


Unplatted Future Emerald Bay Addition



© 2018 GARVER, LLC
THIS DOCUMENT, ALONG WITH THE IDEAS AND DESIGNS CONVEYED HEREIN, SHALL BE CONSIDERED INSTRUMENTS OF PROFESSIONAL SERVICE AND ARE PROPERTY OF GARVER, LLC. ANY USE, REPRODUCTION, OR DISTRIBUTION OF THIS DOCUMENT, ALONG WITH THE IDEAS AND DESIGN CONTAINED HEREIN, IS PROHIBITED UNLESS AUTHORIZED IN WRITING BY GARVER, LLC OR EXPLICITLY ALLOWED IN THE GOVERNING PROFESSIONAL SERVICES AGREEMENT FOR THIS WORK.



REV.	DATE	DESCRIPTION	BY

City of Wichita, KS
 Project #: 468-85241
 OCA: 751566
 Emerald Bay 3rd
 Storm Water Drain Project

SWS Line 2
 JOB NO.: 17264883
 DATE: Feb. 2018
 DESIGNED BY: EJG
 DRAWN BY: EJG

BAR IS ONE INCH ON ORIGINAL DRAWING
 0 1" = 100'
 IF NOT ONE INCH ON THIS SHEET, ADJUST SCALES ACCORDINGLY.

SHEET NUMBER
 TOTAL SHEETS **15 OF 41**

File: L:\2017\17264883 - Emerald Bay 3rd Improvements\Drawings\C3D\SWD\13 SWS Line 2.dwg Last Save: 4/17/2018 9:28 AM Last saved by: DRStandrich
 Last plotted by: Glover, Eric J. Plot Style: --- Plot Scale: 1:2.5849 Plot Date: 4/17/2018 10:49 AM Plotter used: None