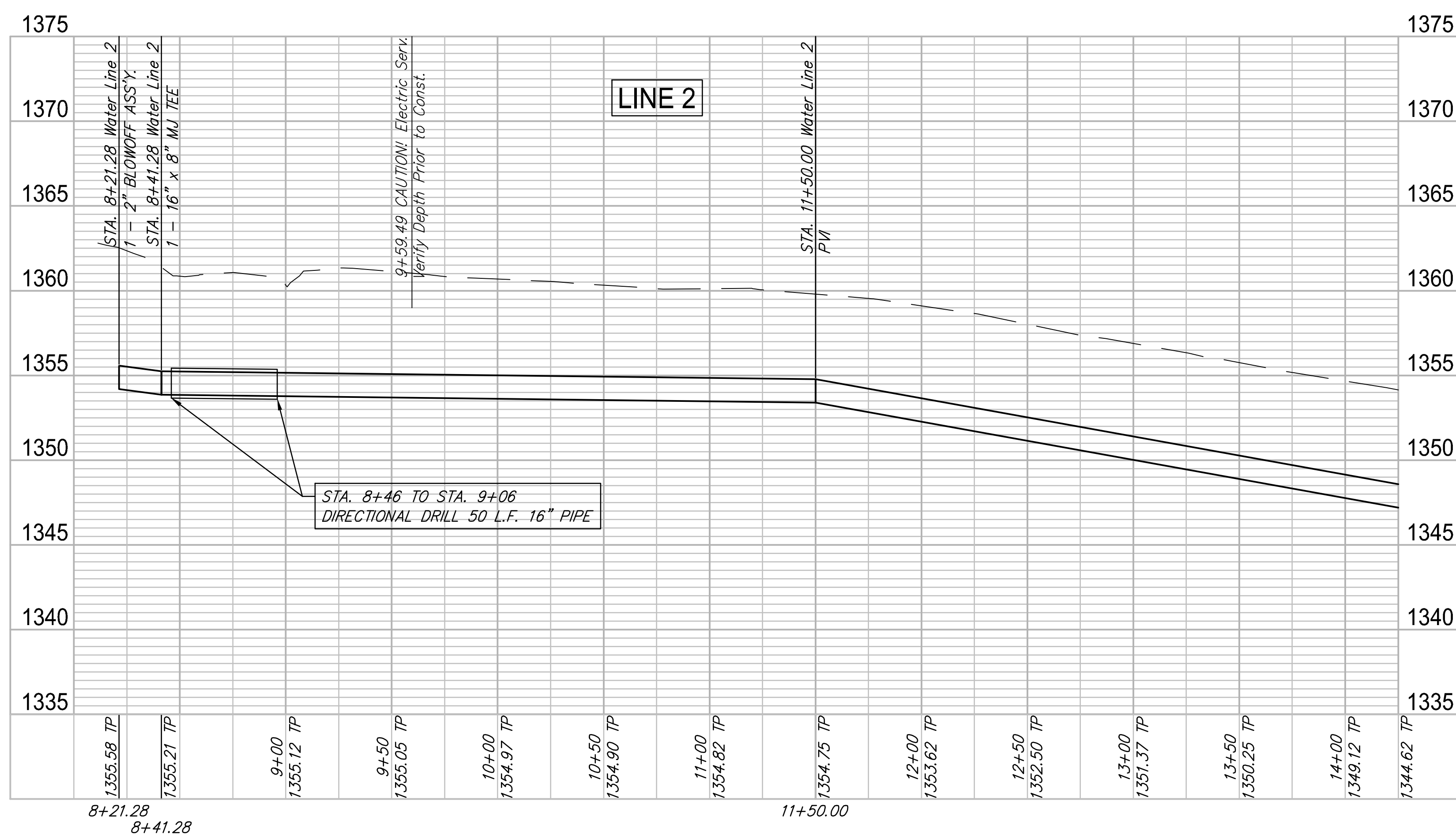
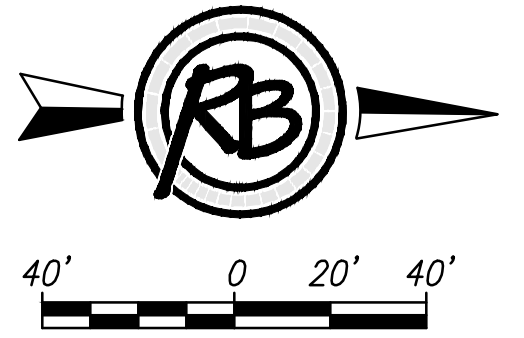
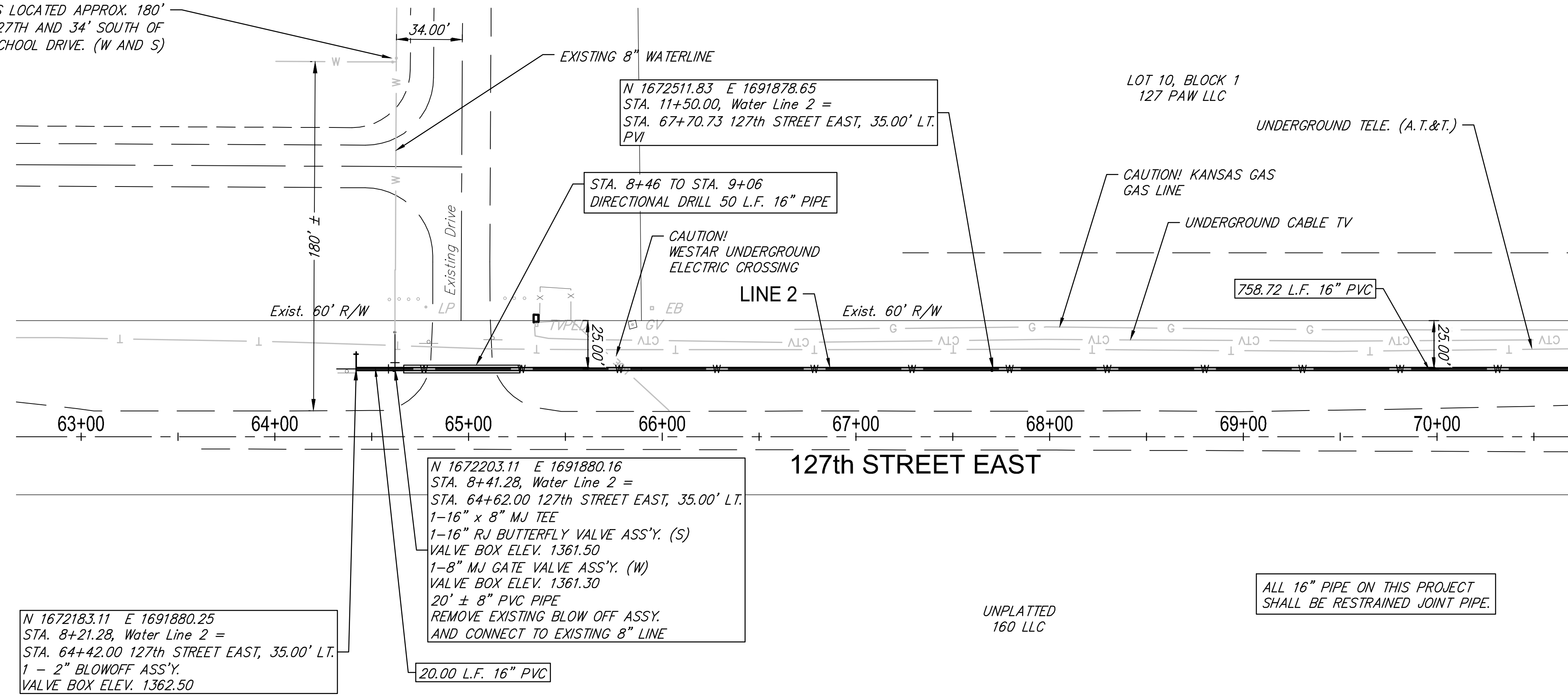


USD 259th 4th Addition

EXISTING SHUTOFF VALVES LOCATED APPROX. 180' WEST OF WEST EDGE OF 127TH AND 34' SOUTH OF CENTERLINE OF SCHOOL DRIVE. (W AND S)

Sierra Pointe Addition



Pawnee & 127th Waterline Waterline 2 - (1 of 2)
Wichita, Kansas

PROJECT NUMBER: 448-90816
DRAWING FILE: Water Line 2 - (1 of 2) [Waterline 2 - (P&S)]

DESIGN: EG
DRAWN: [Signature]

REVIEW: 7-27-2017
DATE: 9-28-2017

RB JOB: 4881W
SHEET: 0 OF 13