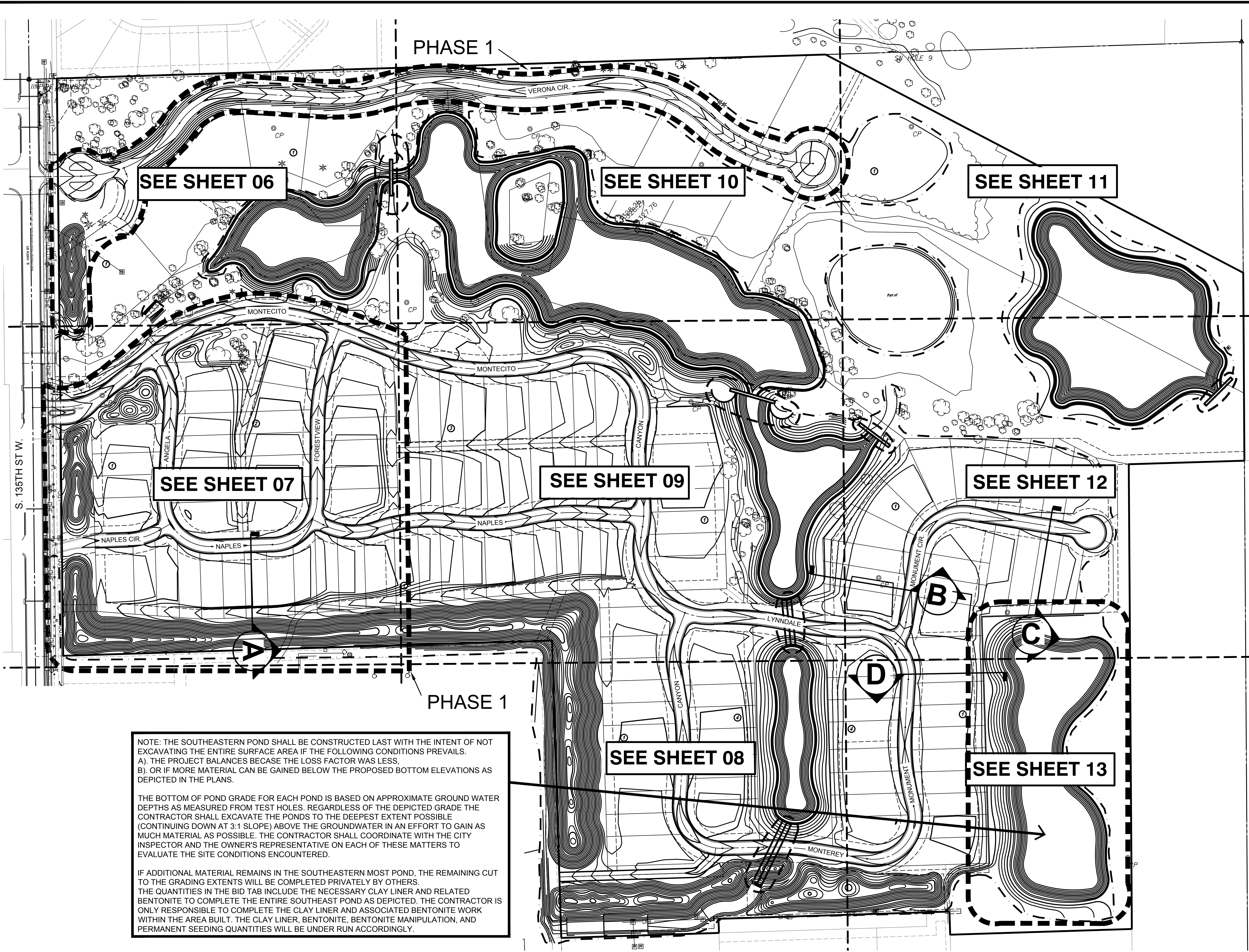


J:\PROJECTS\2018\1601010221\_1\_PERFECTION\_AUBURN\_LAKES\_16221 CAD\SH1505 CIVIL\GRD\16221-05-1200.DWG  
 J:\PROJECTS\2018\1601010221\_1\_PERFECTION\_AUBURN\_LAKES\_16221 CAD\SH1505 CIVIL\GRD\16221-05-1200.DWG  
 PLOTTED: Friday, June 15, 2018 @ 10:31AM



GRADING CHANGES DUE TO GROUNDWATER ELEVATION  
 1"=100'  
 N

SEE SHEET 06

SEE SHEET 10

SEE SHEET 11

SEE SHEET 07

SEE SHEET 09

SEE SHEET 12

SEE SHEET 08

SEE SHEET 13

**NOTE: THE SOUTHEASTERN POND SHALL BE CONSTRUCTED LAST WITH THE INTENT OF NOT EXCAVATING THE ENTIRE SURFACE AREA IF THE FOLLOWING CONDITIONS PREVAILS.**  
 A). THE PROJECT BALANCES BECAUSE THE LOSS FACTOR WAS LESS.  
 B). OR IF MORE MATERIAL CAN BE GAINED BELOW THE PROPOSED BOTTOM ELEVATIONS AS DEPICTED IN THE PLANS.  
  
 THE BOTTOM OF POND GRADE FOR EACH POND IS BASED ON APPROXIMATE GROUND WATER DEPTHS AS MEASURED FROM TEST HOLES. REGARDLESS OF THE DEPICTED GRADE THE CONTRACTOR SHALL EXCAVATE THE PONDS TO THE DEEPEST EXTENT POSSIBLE (CONTINUING DOWN AT 3:1 SLOPE) ABOVE THE GROUNDWATER IN AN EFFORT TO GAIN AS MUCH MATERIAL AS POSSIBLE. THE CONTRACTOR SHALL COORDINATE WITH THE CITY INSPECTOR AND THE OWNER'S REPRESENTATIVE ON EACH OF THESE MATTERS TO EVALUATE THE SITE CONDITIONS ENCOUNTERED.  
  
 IF ADDITIONAL MATERIAL REMAINS IN THE SOUTHEASTERN MOST POND, THE REMAINING CUT TO THE GRADING EXTENTS WILL BE COMPLETED PRIVATELY BY OTHERS. THE QUANTITIES IN THE BID TAB INCLUDE THE NECESSARY CLAY LINER AND RELATED BENTONITE TO COMPLETE THE ENTIRE SOUTHEAST POND AS DEPICTED. THE CONTRACTOR IS ONLY RESPONSIBLE TO COMPLETE THE CLAY LINER AND ASSOCIATED BENTONITE WORK WITHIN THE AREA BUILT. THE CLAY LINER, BENTONITE, BENTONITE MANIPULATION, AND PERMANENT SEEDING QUANTITIES WILL BE UNDER RUN ACCORDINGLY.



GRADING PLANS FOR  
**AUBURN LAKES ADDITION**  
 PART A

©2018  
 MKEC Engineering  
 All Rights Reserved  
 www.mkec.com  
 These drawings and their contents, including, but not limited to, all concepts, designs, & ideas are the exclusive property of MKEC Engineering (MKEC), and may not be used or reproduced in any way without the express consent of MKEC.

**OVERALL GRADING PLAN**

PROJECT NO.	468-85308	
DATE	MAY 2018	
SCALE	1"=100'	
DESIGNED	DRAWN	CHECKED
DFL	ABW	DFL

NO.	REVISION	DATE
1	GRADING CHANGES	06-22-18