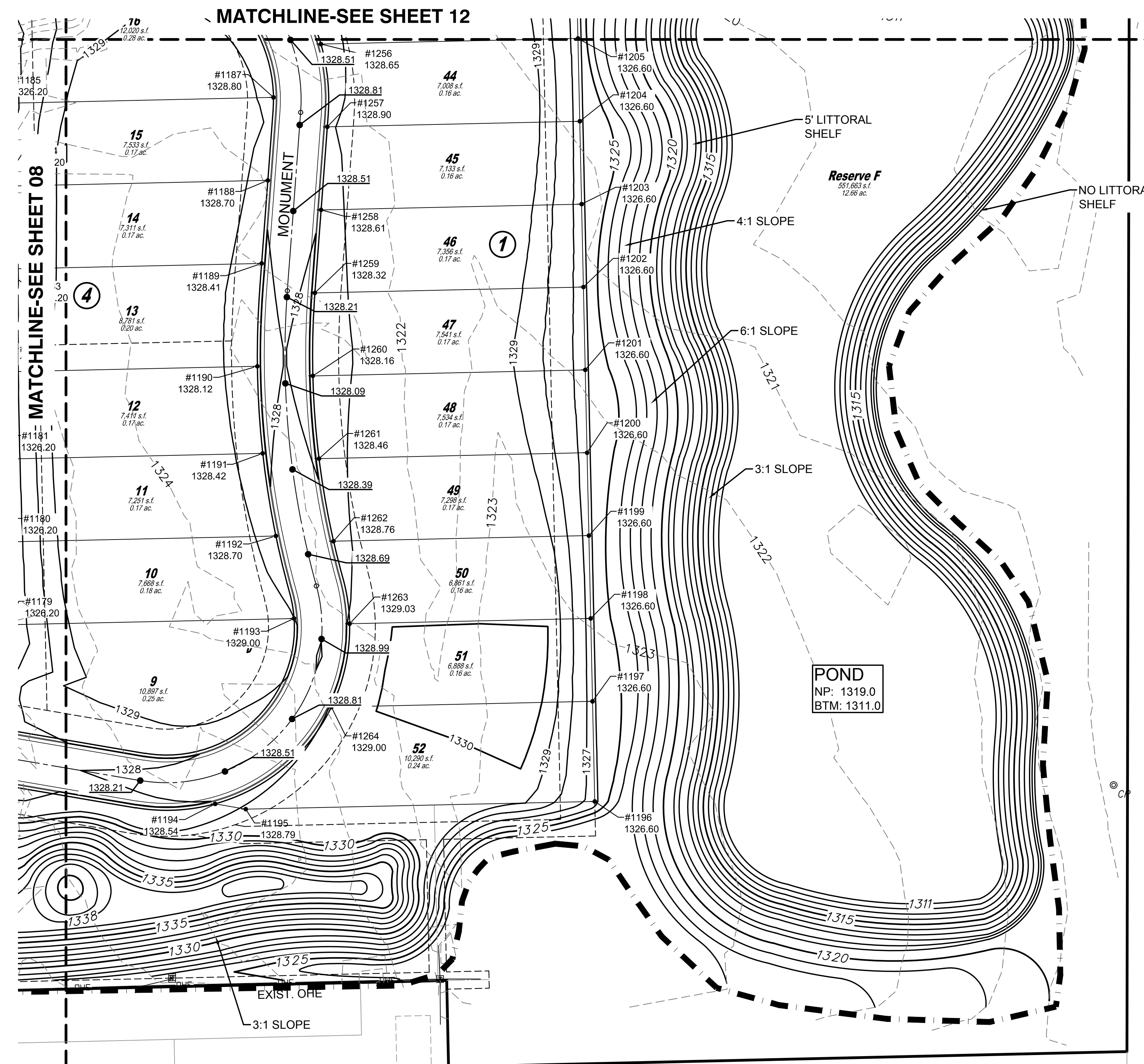


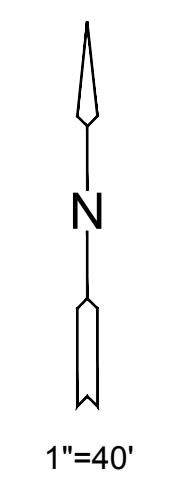
J:\PROJECTS\2018\1601010221_PERFECTION_AUBURN_LAKES_16221 CAD\SH1505 CIVIL\GRD\16221-05-1200.DWG
 PLOTTED: Friday, June 15, 2018 @ 10:58AM



UNPLATTED

UNPLATTED

- LEGEND**
- 1250 --- EXISTING CONTOUR
 - 1250 — PROPOSED CONTOUR
 - W — WATER LINE
 - S — PROP. STORMWATER SEWER
 - S — EXISTING SANITARY SEWER
 - S — EXISTING STORMWATER SEWER
 - UGT — EXISTING UNDERGROUND TELEPHONE
 - UGE — EXISTING UNDERGROUND ELECTRICAL
 - OHE — EXISTING OVERHEAD ELECTRICAL
 - — — LIMITS OF GRADING
 - 1329.86 SPOT ELEVATIONS
 - X — TREE PROTECTION



NOTES:
 VERTICAL DATUM USED IS NAVD88.
 ALL STREET GRADES SHOWN ARE TO TOP OF PAVEMENT. CONTRACTOR SHALL OVER EXCAVATE ROADS TO TOP OF SUBGRADE. REFER TO ROAD CROSS SECTION DETAIL, SEE SHEET 03.

⚠ GRADING CHANGES DUE TO GROUNDWATER ELEVATION



GRADING PLANS FOR
AUBURN LAKES ADDITION
 PART A

©2018 MKEC Engineering All Rights Reserved
 www.mkec.com
 These drawings and their contents, including, but not limited to, all concepts, designs, & ideas are the exclusive property of MKEC Engineering (MKEC), and may not be used or reproduced in any way without the express consent of MKEC.

GRADING PLAN

PROJECT NO.	468-85308	
DATE	MAY 2018	
SCALE	1"=40'	
DESIGNED	DRAWN	CHECKED
DFL	ABW	DFL

NO.	REVISION	DATE
1	GRADING CHANGES	06-22-18