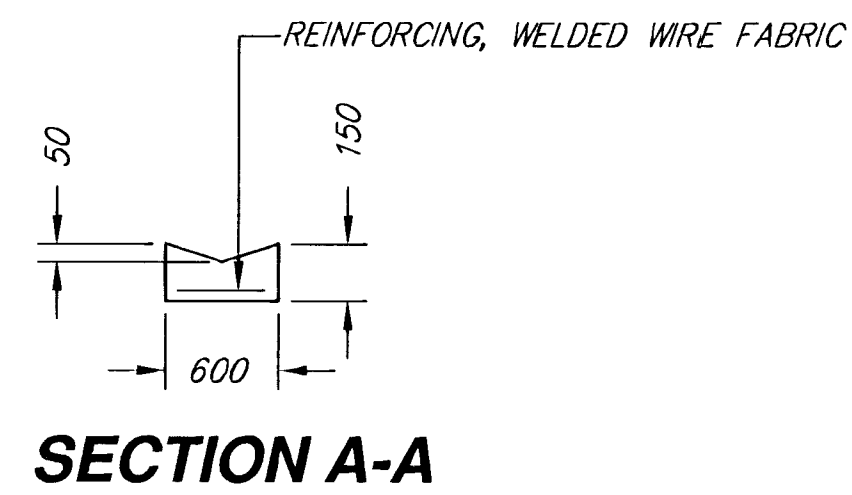
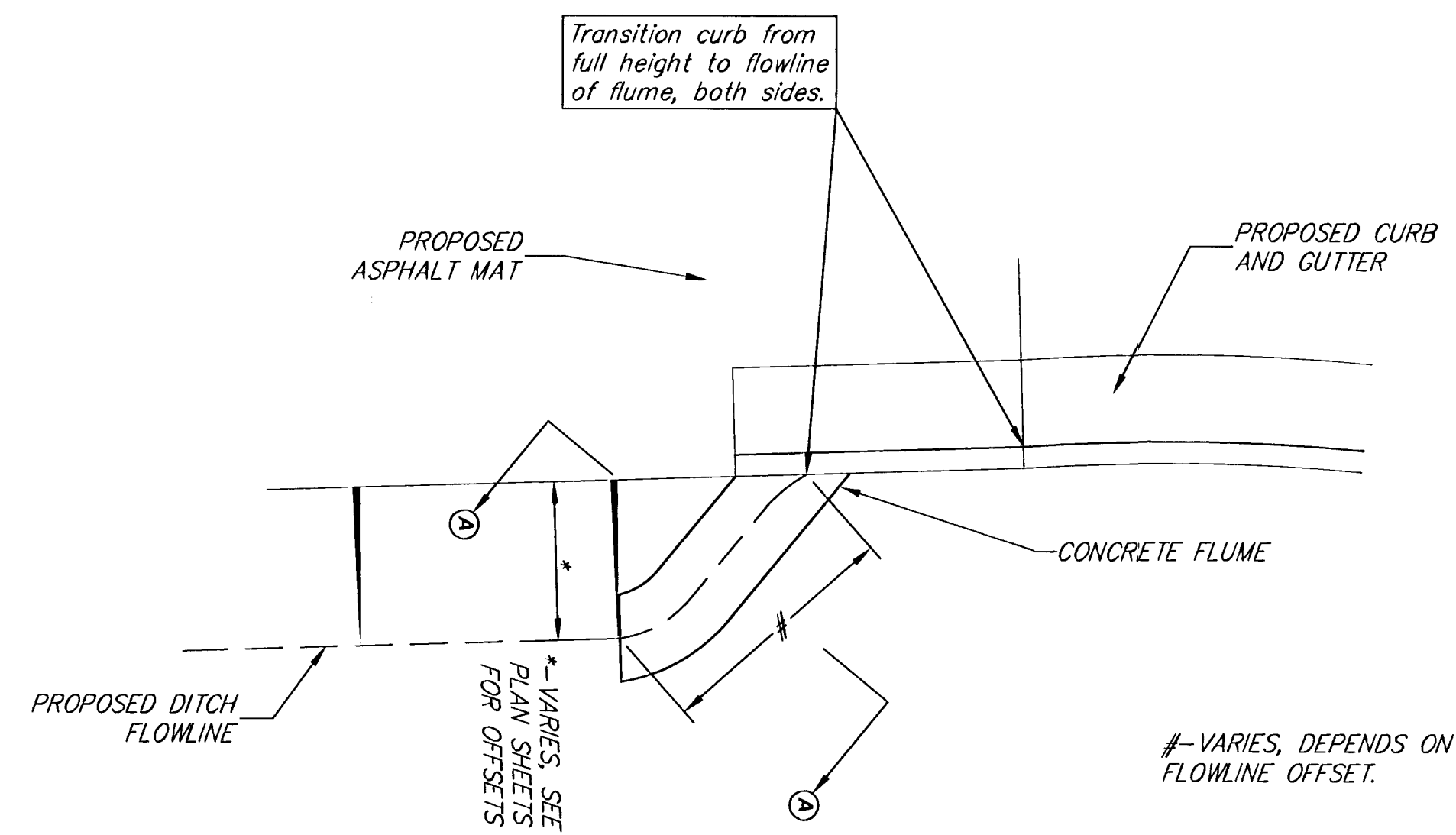
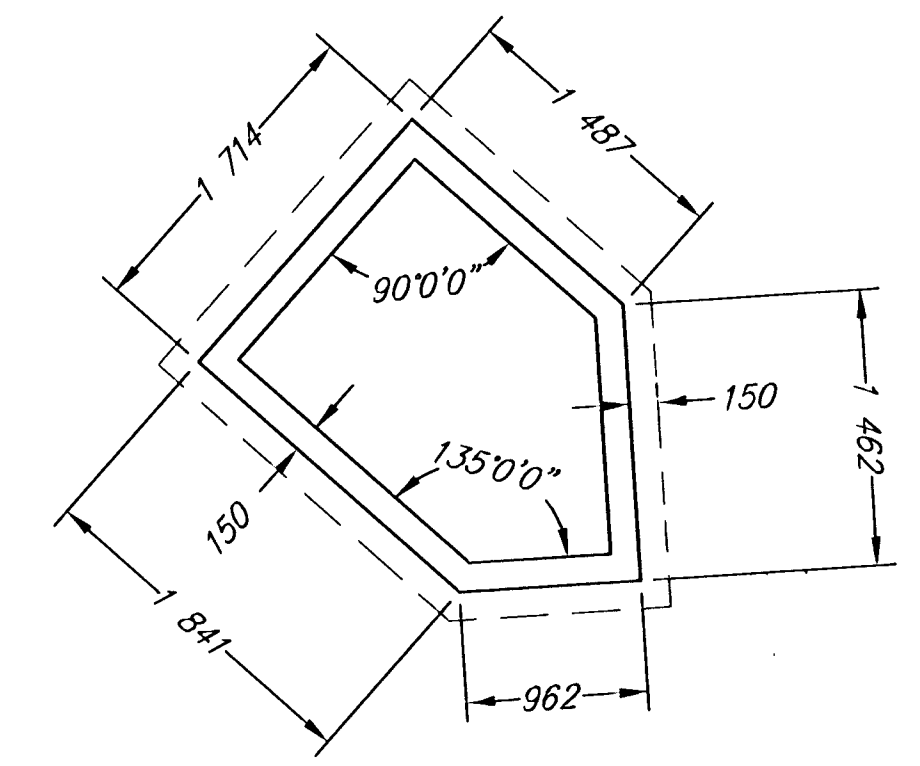
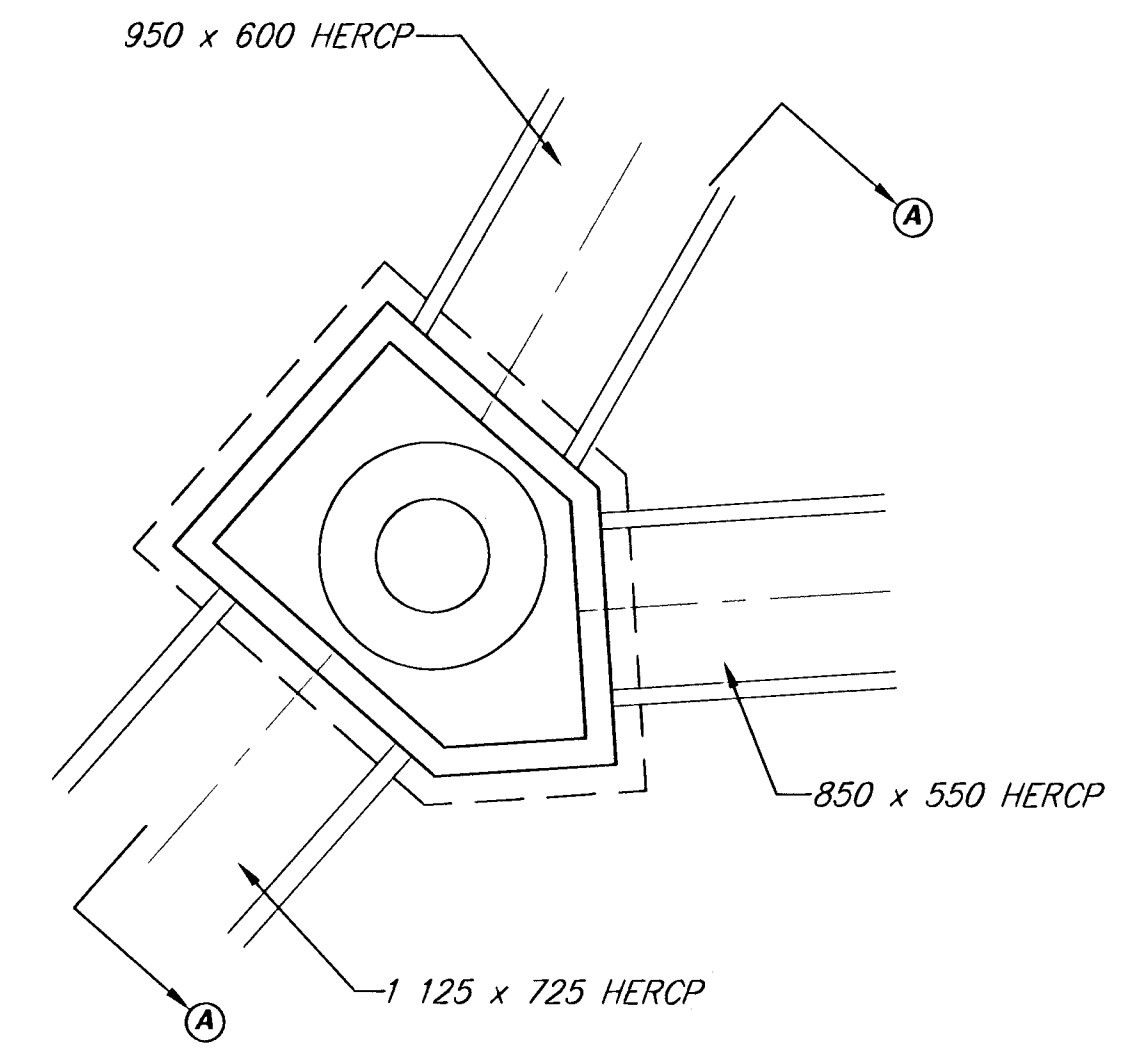


| FHWA REGION NO. | STATE | PROJECT NUMBER | FISCAL YEAR | SHEET NUMBER | TOTAL SHEETS |
|-----------------|--------|----------------|-------------|--------------|--------------|
| 7 | KANSAS | 87 N-0189-01 | 2001 | 74 | 105 |

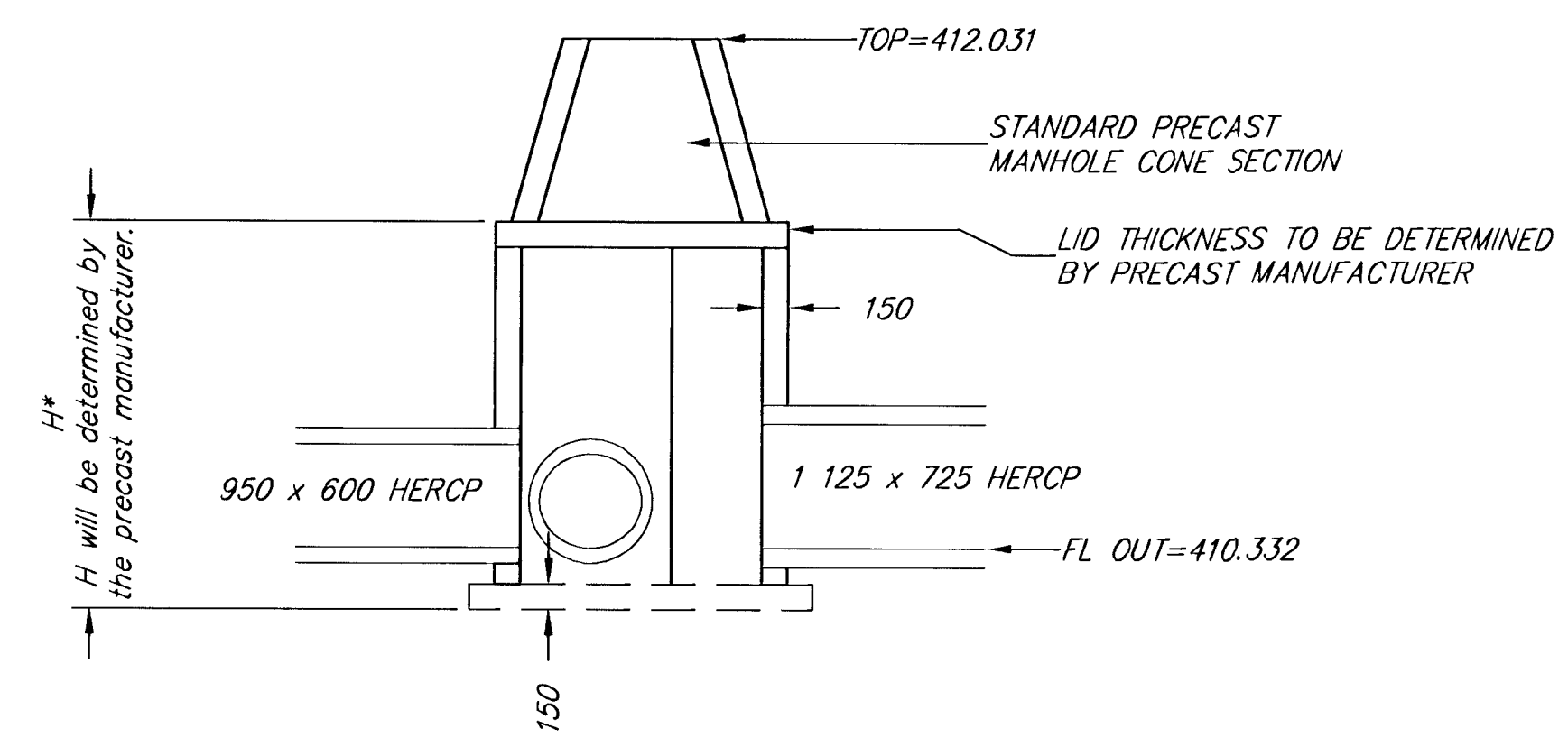
CONCRETE FLUME



SPECIAL 'P' MANHOLE



- GENERAL NOTES:**
1. Reinforcing for precast manhole shall be determined by precast manufacturer.
 2. All dimensions are in 'mm', unless noted otherwise.
 3. Lid thickness and height shall be determined by manufacturer.
 4. Perimeter dimensions of manhole may be adjusted to accommodate economical manufacturing process.
 5. All interior angles are either 90° or 135°; unless noted otherwise.



| | | | | | |
|---|---------------|--|--------------------|--|------------------|
| 21st Street North DETAILS | | | | | |
| SRB | | 324 NORTH MAIN WICHITA KANSAS 67203 www.srb1.com | | 316-264-8008 FAX 264-4821 E-Mail: srb@srb1.com | |
| SAVOY, RUGGLES & BOHM, P.A. ENGINEERING & SURVEYING | | | | | |
| PROJECT NUMBER 472-83138 | | | | | |
| DRAWN MWS | DESIGN MWS | REVIEW | DATE 01/25/2001 | UTILITY | SRB JOB 1478T |
| | | | | | 74 105 |