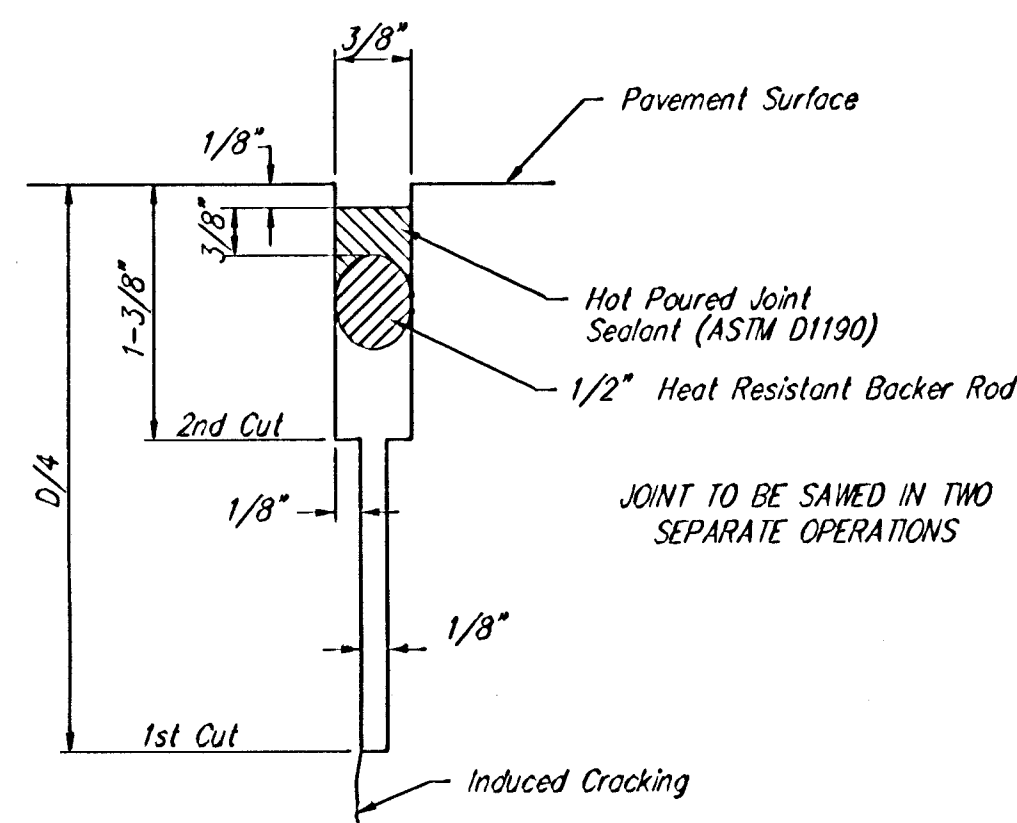
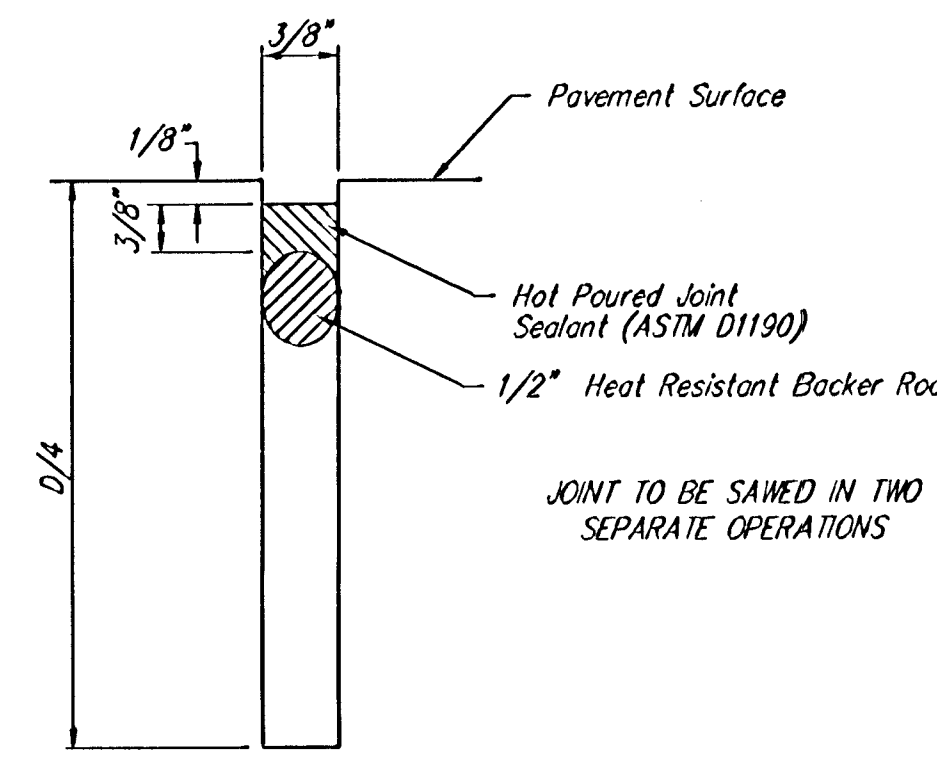


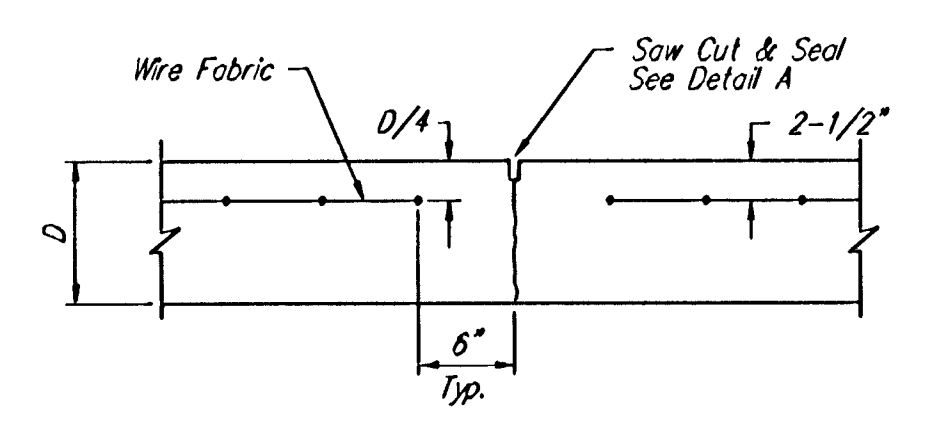
FHWA REGION NO.	STATE	PROJECT NO.	FISCAL YEAR	SHEET NO.	TOTAL SHEETS
7	KANSAS	87-N-0303-01	2003	6	143



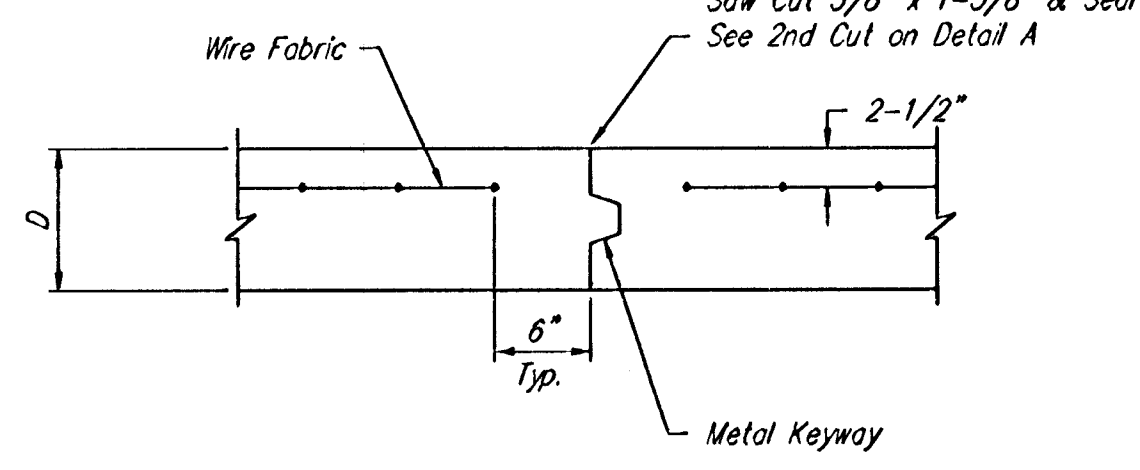
SAW JOINT DETAIL "A"



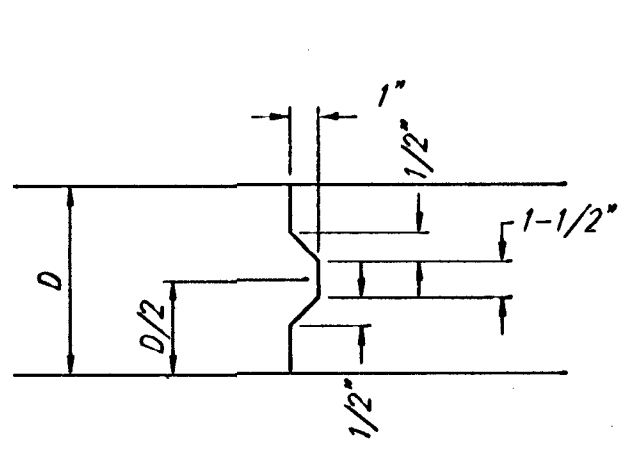
SAW JOINT DETAIL "B"



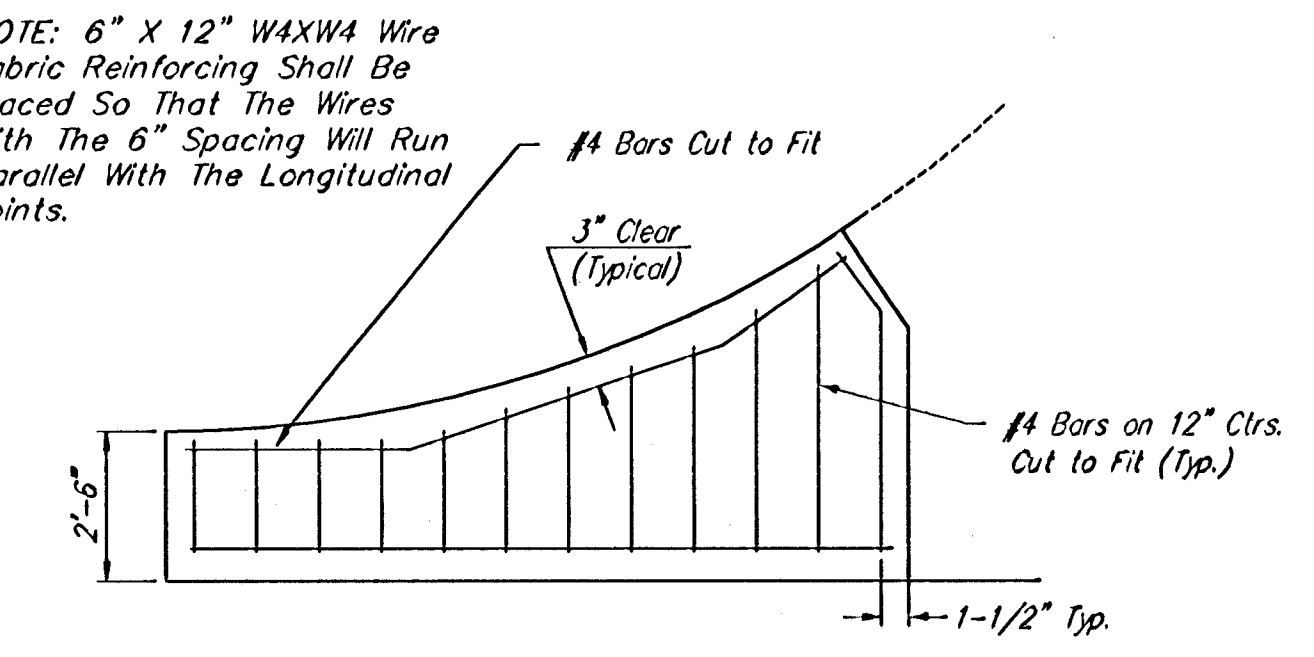
CONTRACTION JOINT DETAIL (C.J.)



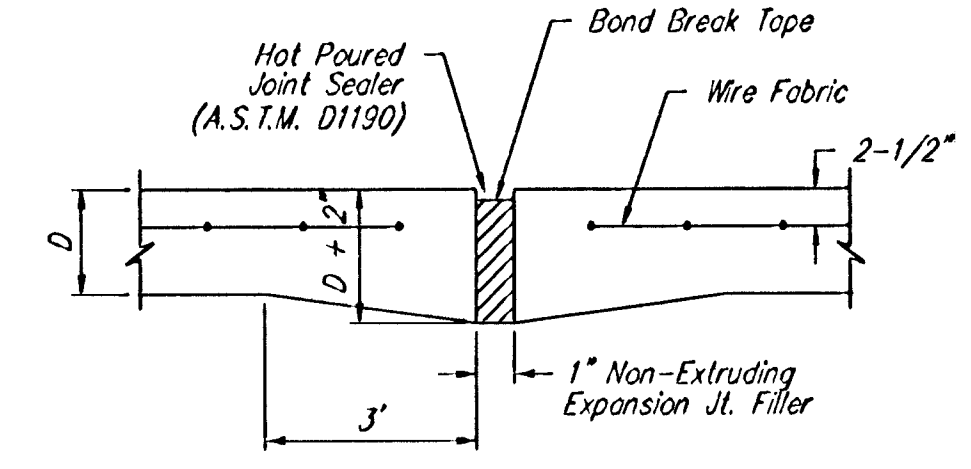
OPTIONAL CONTRACTION JOINT (CONSTRUCTION JOINT)



KEYWAY DETAIL

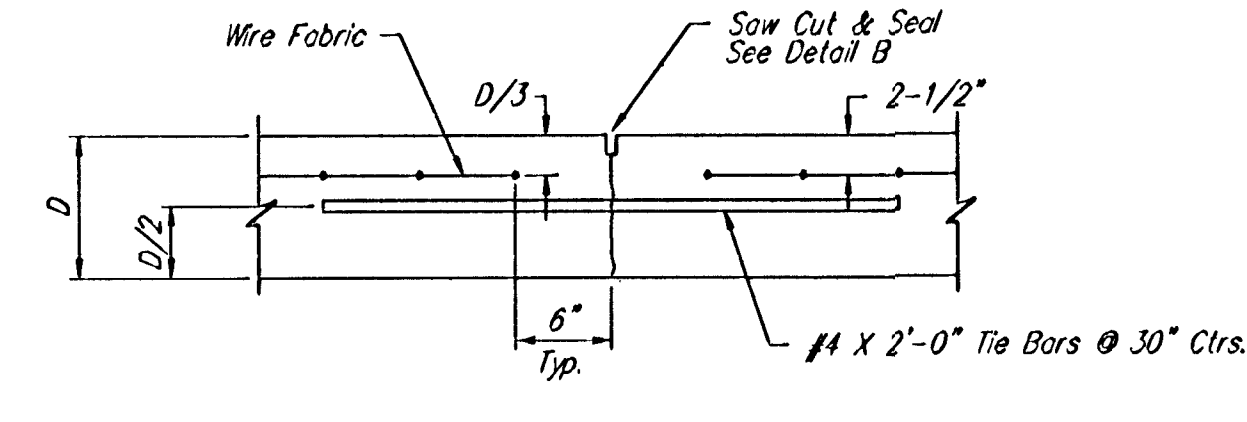


WING REINFORCING DETAIL

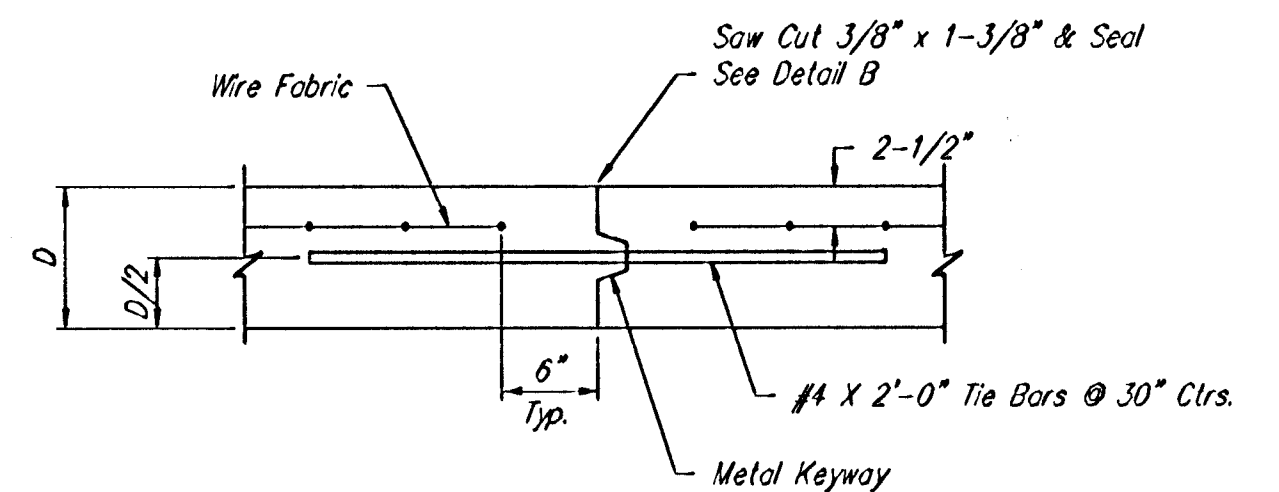


EXPANSION JOINT

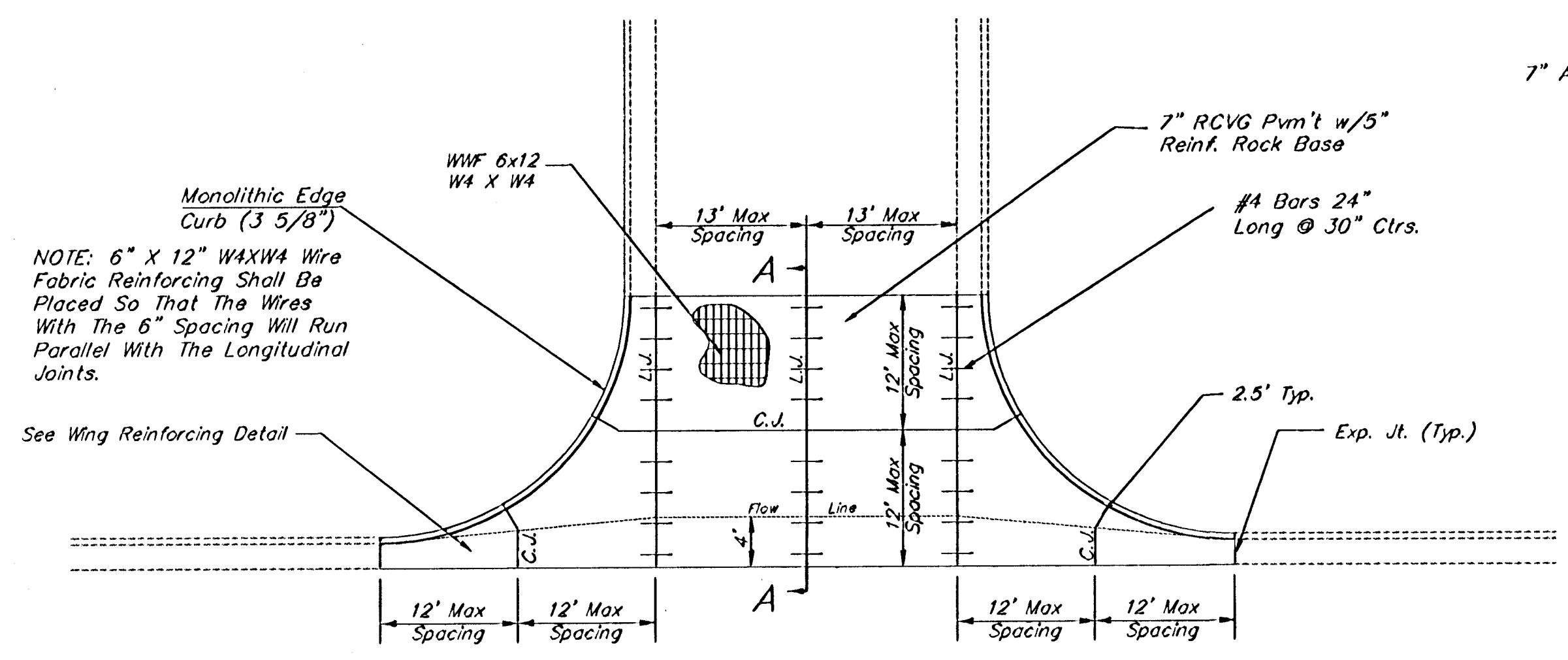
NOTE: Extra Thickness to be Subsidiary to Price of Square Yards Pavement



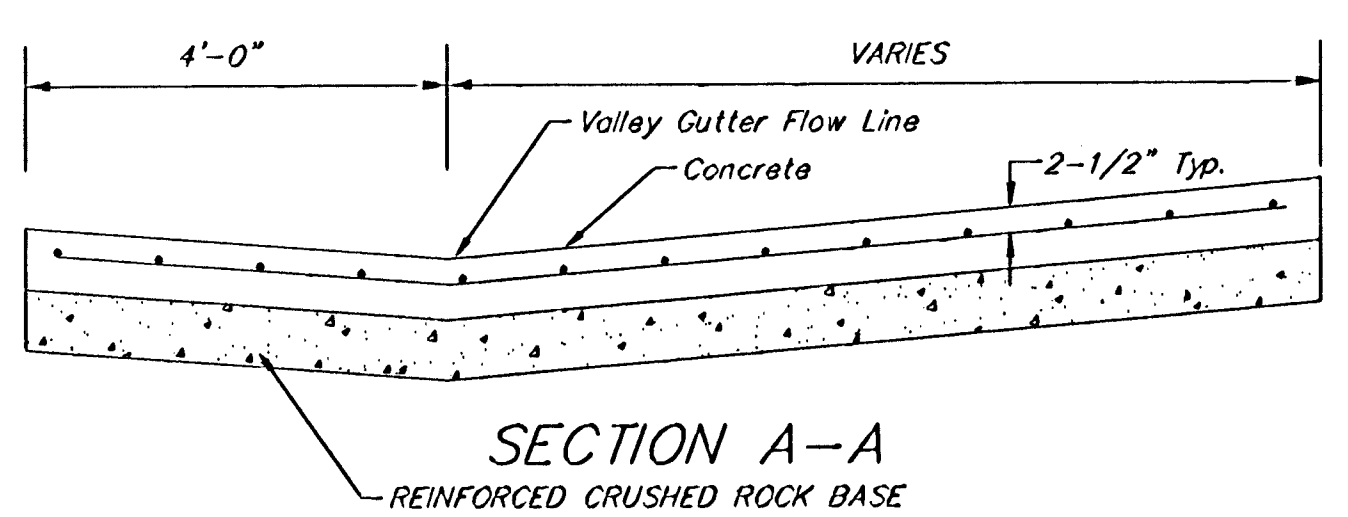
LONGITUDINAL JOINT DETAIL (L.J.)



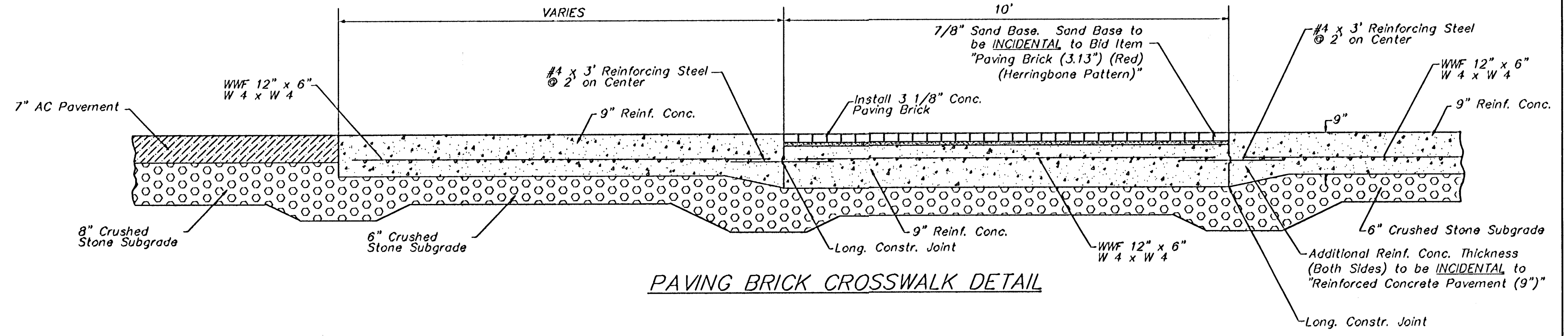
OPTIONAL LONGITUDINAL JOINT DETAIL (L.J.) (CONSTRUCTION JOINT)



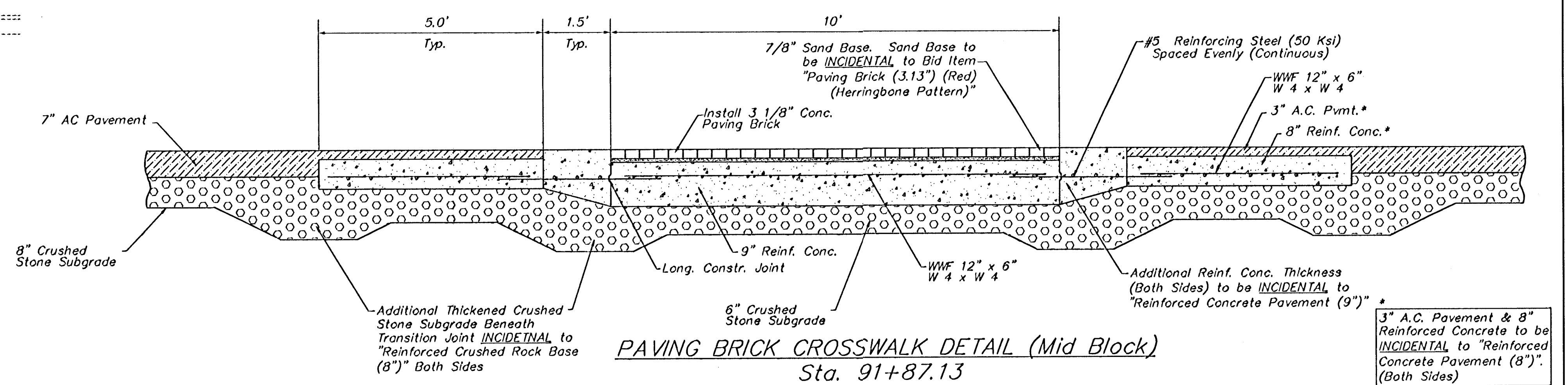
PLAN VIEW



REINFORCED VALLEY GUTTER DETAIL



PAVING BRICK CROSSWALK DETAIL



PAVING BRICK CROSSWALK DETAIL (Mid Block)
Sta. 91+87.13

PROJECT NUMBER 472-83902		SHEET NAME Pvmntdetail		ENGINEERING DIRECTORY F:Eng/Hydraulic ph2/Details		CAPITAL IMPROVEMENT PROJECT		BAUGHMAN COMPANY, P.A. ENGINEERING, SURVEYING, & PLANNING		SHEET 6	TOTAL SHEETS 143
DESIGN JFB	DRAWN TCA	APPROVED JFB	DATE APRIL 02	SCALE None	BAUGHMAN NO 99-09-E451	STANDARD PAVEMENT DETAILS HYDRAULIC AVENUE PAVING - 37th STREET SOUTH TO 47th STREET SOUTH		316-262-7271 • 315 ELLIS • WICHITA, KANSAS 67211			