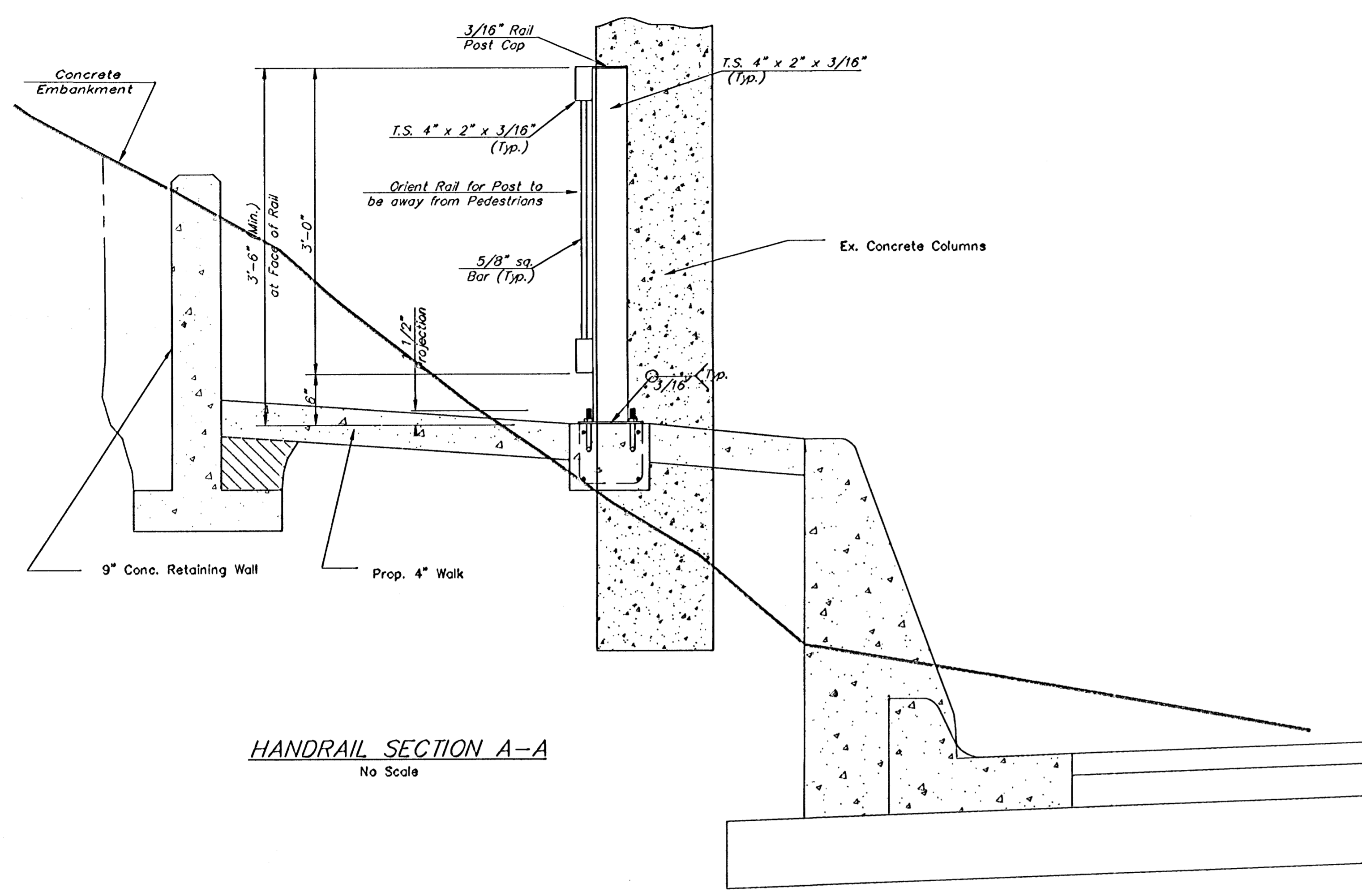
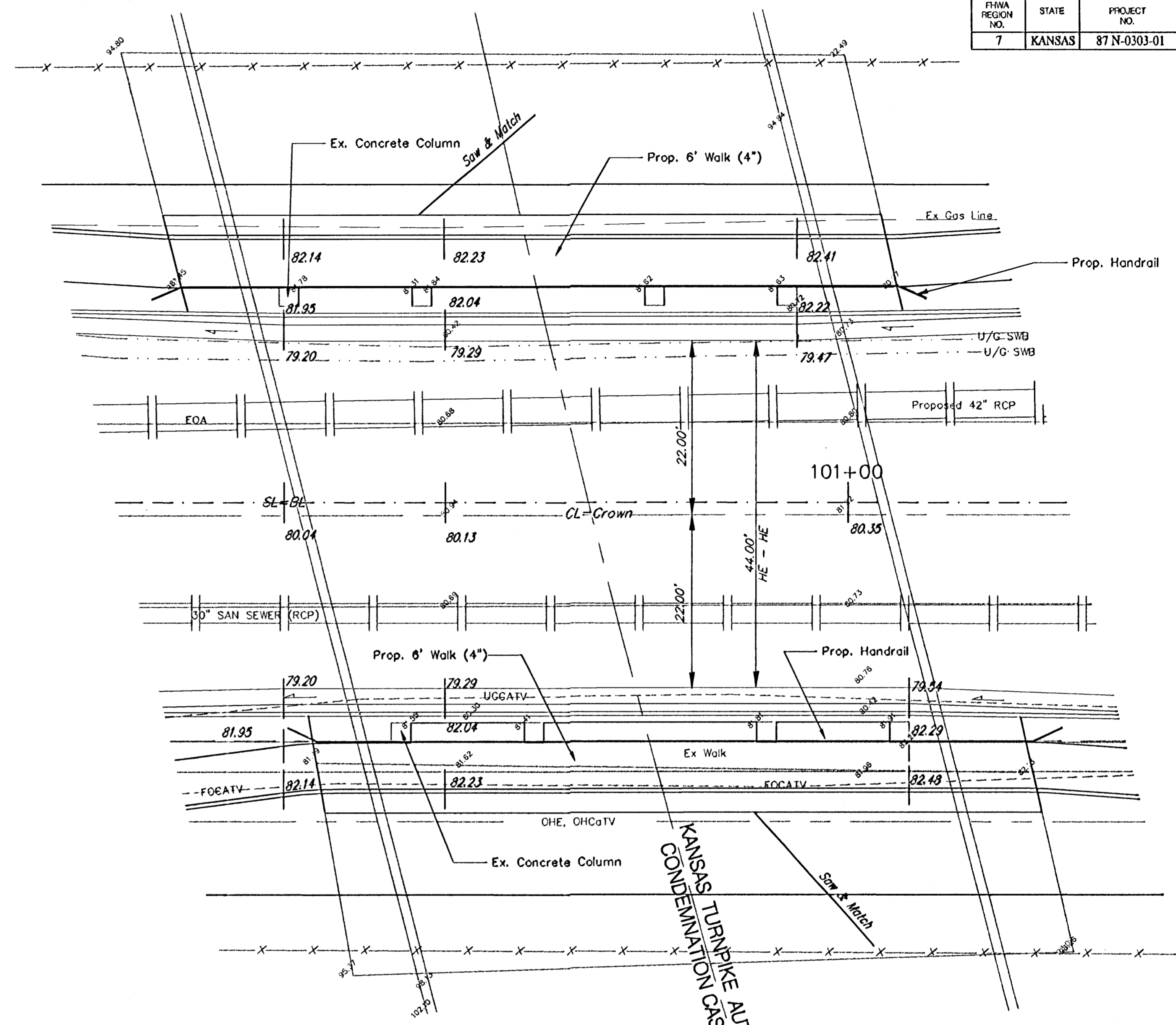


FHWA REGION NO.	STATE	PROJECT NO.	FISCAL YEAR	SHEET NO.	TOTAL SHEETS
7	KANSAS	87-N-0303-01	2003	10	143

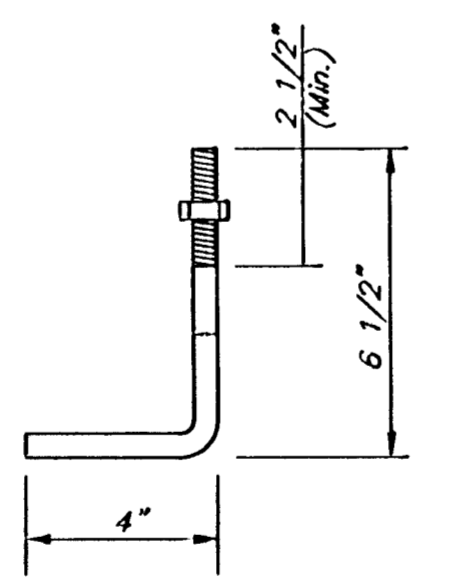


HANDRAIL SECTION A-A
No Scale



GENERAL NOTES

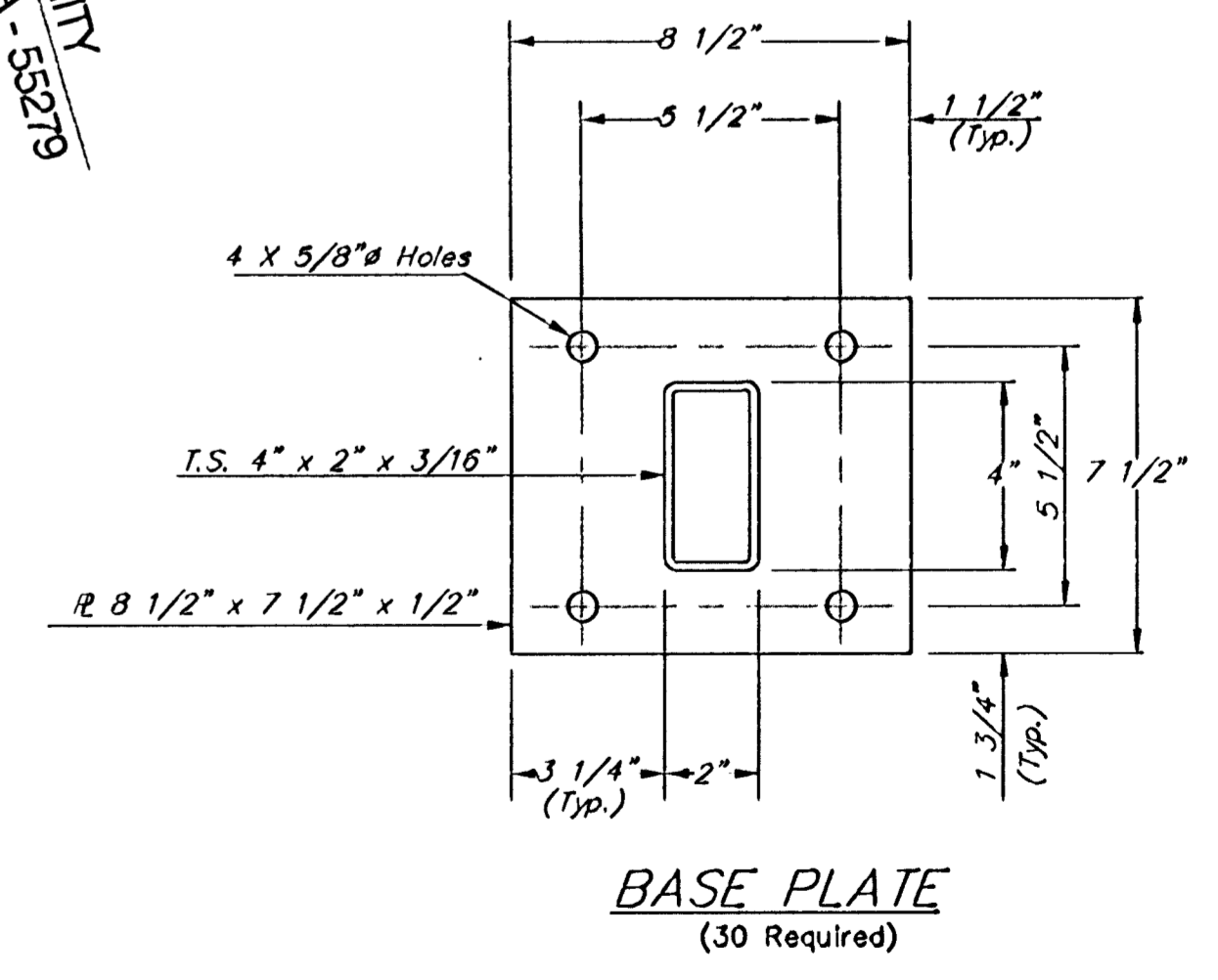
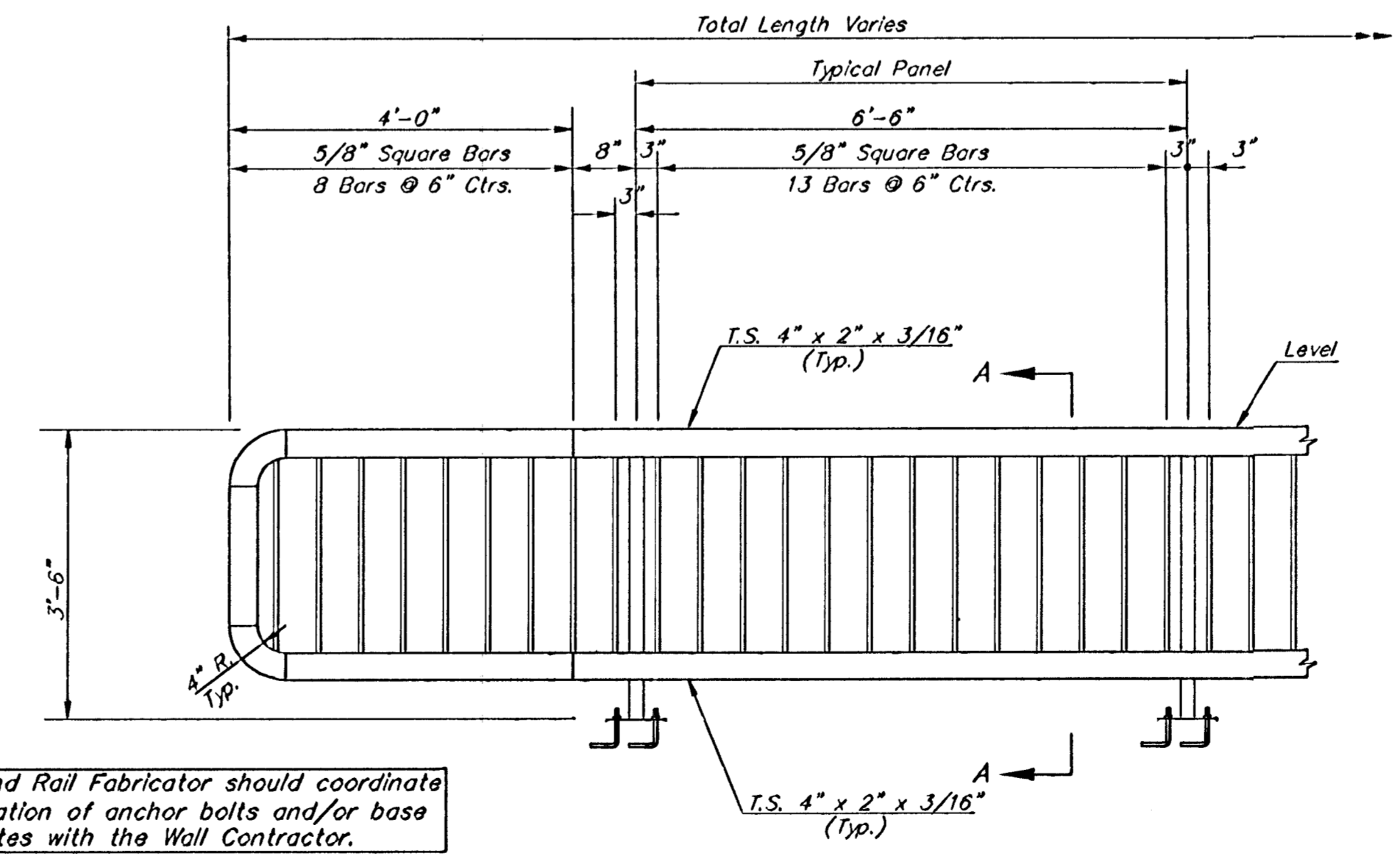
- The horizontal members of the rail and posts shall be hollow structural tubing. All structural steel and tubing shall comply to A.S.T.M. Designation A36 or A500 Grade B respectively.
- Rail shall be fabricated in lengths as shown.
- Posts and bars shall be set vertical and shimmed if required.
- The Handrail shall be sandblasted prior to painting.
- The Handrail shall be painted shop and field with an Zinc/Water Borne Acrylic paint system complying with the Standard Specifications for State Road and Bridge Construction, 1990 Edition Kansas Department of Transportation. Color of paint shall be "Yellow" and shall be approved by the Engineer before application.
- Material and construction shall conform to the Structural Welding Code A.W.S. D1.1-88.
- Shop details must be submitted to and approved by the Engineer.
- All dimensions are ± and shall be field verified.
- Class A Concrete (AE) - 4000 p.s.i. @ 28 days.
- Rebar - A615, #4, Gr. 60
- Chamfer exposed edges 3/4" (Typical).



Galvanized (ATSM A153)
(May Substitute expandable anchor bolts when approved by the Engineer)

ANCHOR BOLT *

Orient to provide min. 2" edge clearance to either top of footing or adjacent bolts.



Hand Rail Fabricator should coordinate location of anchor bolts and/or base plates with the Wall Contractor.

PROJECT NUMBER 472-83902	SHEET NAME Handrail	ENGINEERING DIRECTORY F:\Hydraulic_Ph2\Details	CAPITAL IMPROVEMENT PROJECT HAND RAIL DETAIL HYDRAULIC AVENUE PAVING - PHASE 2			BAUGHMAN COMPANY, P.A. ENGINEERING, SURVEYING, & PLANNING 318-262-7271 • 315 ELLIS • WICHITA, KANSAS 67211	SHEET 10 OF 143
DESIGN JFB	DRAWN Azlere	APPROVED JFB	DATE Aug 03	SCALE None	BAUGHMAN NO. 99-09-E451		