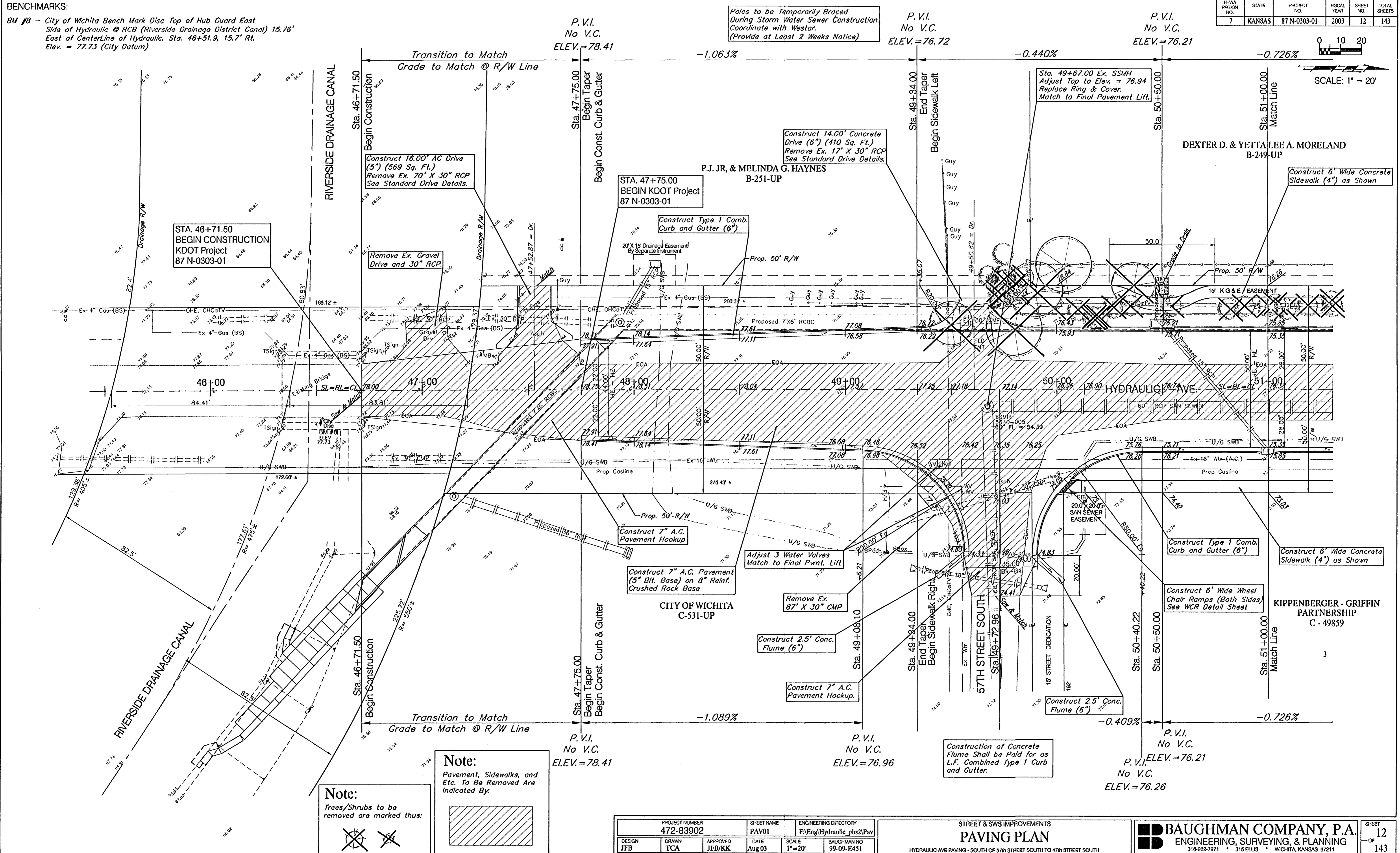
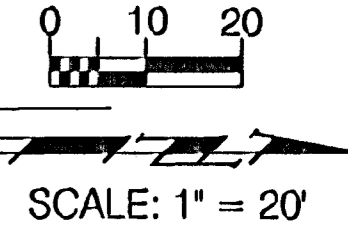


**BENCHMARKS:**

BM #8 - City of Wichita Bench Mark Disc Top of Hub Guard East Side of Hydraulic @ RCB (Riverside Drainage District Canal) 15.76' East of Centerline of Hydraulic. Sta. 46+51.9, 15.7' Rt. Elev. = 77.73 (City Datum)

FEMA REGION NO.	STATE	PROJECT NO.	FISCAL YEAR	SHEET NO.	TOTAL SHEETS
7	KANSAS	87 N-0303-01	2003	12	143



**Note:**  
Pavement, Sidewalks, and Etc. To Be Removed Are Indicated By:

**Note:**  
Trees/Shrubs to be removed are marked thus:

PROJECT NUMBER 472-83902	SHEET NAME PAV01	ENGINEERING DIRECTORY F:\Eng\Hydraulic_ph2\ Pav
DESIGN JFB	DRAWN TCA	APPROVED JFB/KK
DATE Aug 03	SCALE 1"=20'	BAUGHMAN NO. 99-09-E451

STREET & SWS IMPROVEMENTS  
**PAVING PLAN**  
HYDRAULIC AVE PAVING - SOUTH OF 57th STREET SOUTH TO 47th STREET SOUTH

**BAUGHMAN COMPANY, P.A.**  
ENGINEERING, SURVEYING, & PLANNING  
318-282-7271 • 315 ELLIS • WICHITA, KANSAS 67211