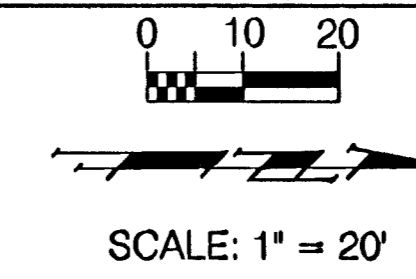


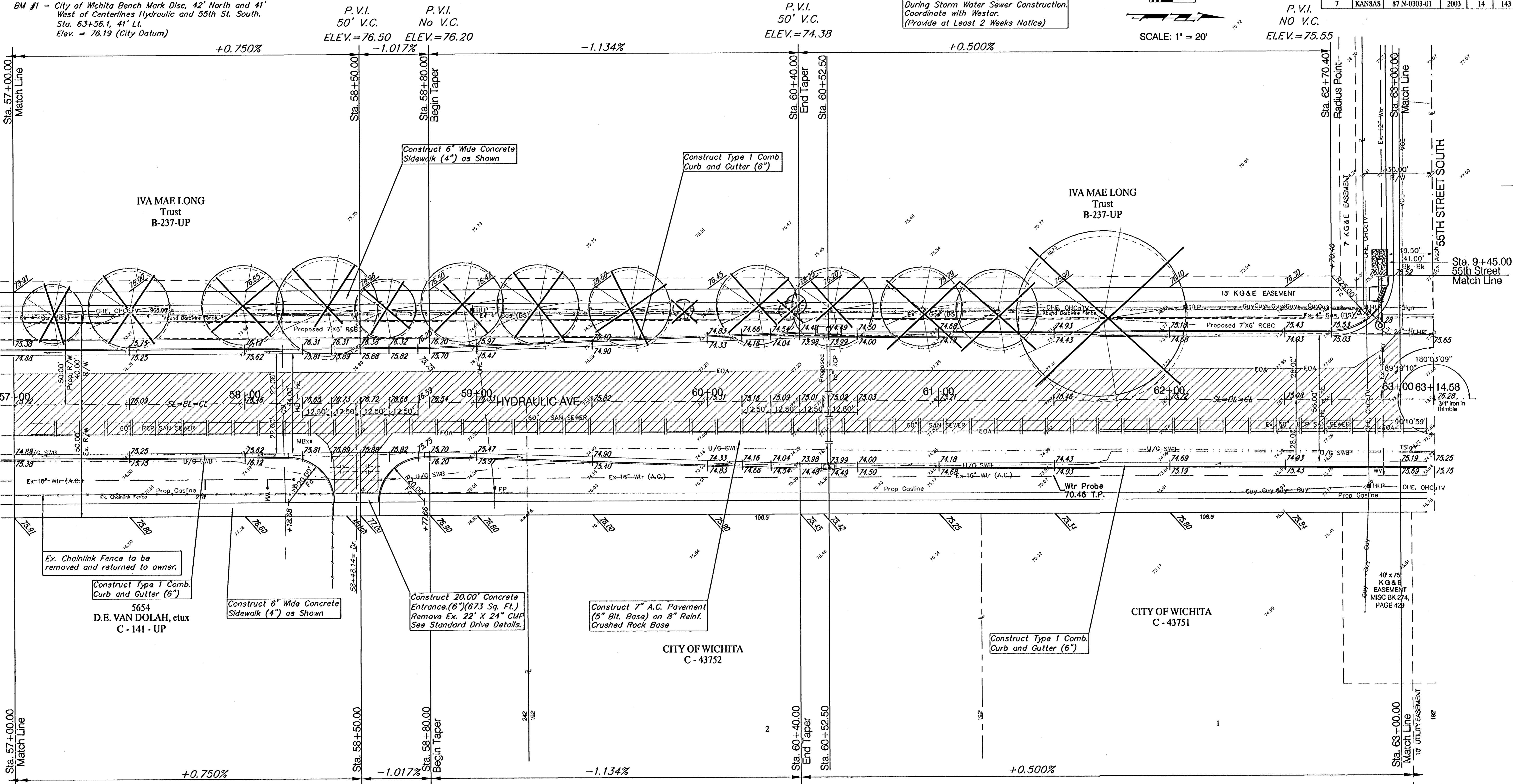
BENCHMARKS:

BM #1 - City of Wichita Bench Mark Disc, 42' North and 41' West of Centerlines Hydraulic and 55th St. South.
Sta. 63+56.1, 41' Lt.
Elev. = 76.19 (City Datum)

Poles to be Temporarily Braced During Storm Water Sewer Construction. Coordinate with Westor. (Provide at Least 2 Weeks Notice)



FEMA REGION NO.	STATE	PROJECT NO.	FISCAL YEAR	SHEET NO.	TOTAL SHEETS
7	KANSAS	87-N-0303-01	2003	14	143



Note:
Pavement, Sidewalks, and Etc. To Be Removed Are Indicated By:

Note:
Trees/Shrubs to be removed are marked thus:

PROJECT NUMBER 472-83902	SHEET NAME PAV03	ENGINEERING DIRECTORY F:\Eng\Hydraulic_ph2\ Pav
DESIGN JFB	APPROVED TCA	DATE Aug 03
SCALE 1"=20'	BAUGHMAN NO 99-09-E451	

STREET & SWS IMPROVEMENTS
PAVING PLAN
HYDRAULIC AVE PAVING - SOUTH OF 57th STREET SOUTH TO 47th STREET SOUTH

BAUGHMAN COMPANY, P.A.
ENGINEERING, SURVEYING, & PLANNING
318-282-7271 • 315 ELLIS • WICHITA, KANSAS 67211

SHEET 14 OF 143