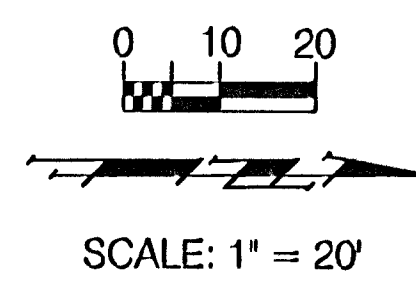
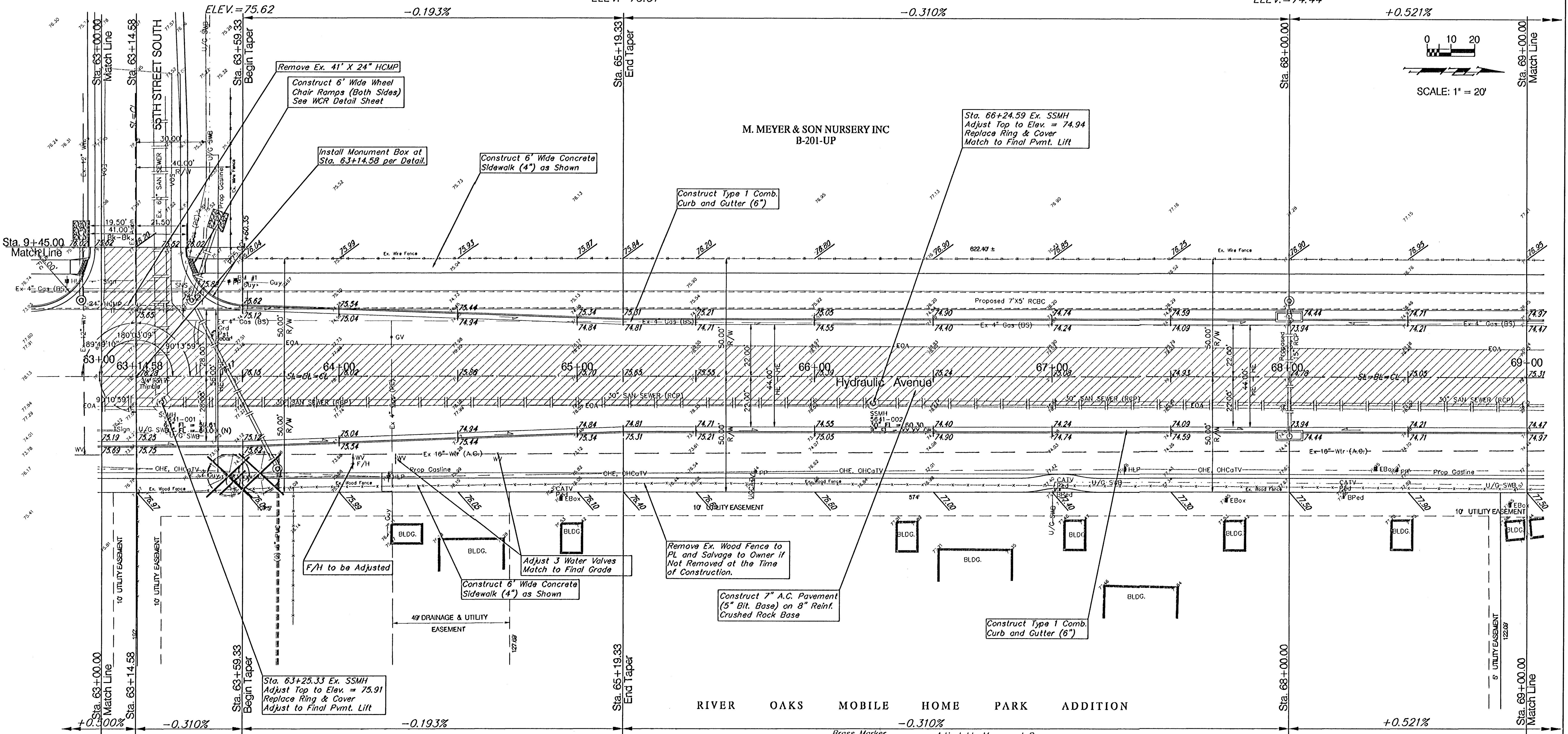


BENCHMARKS:
 BM #1 - City of Wichita Bench Mark Disc, 42' North and 41' West of Centerlines Hydraulic and 55th St. South.
 Sta. 63+56.1, 41' Lt.
 Elev. = 76.19 (City Datum)
 P.V.I.
 No V.C.

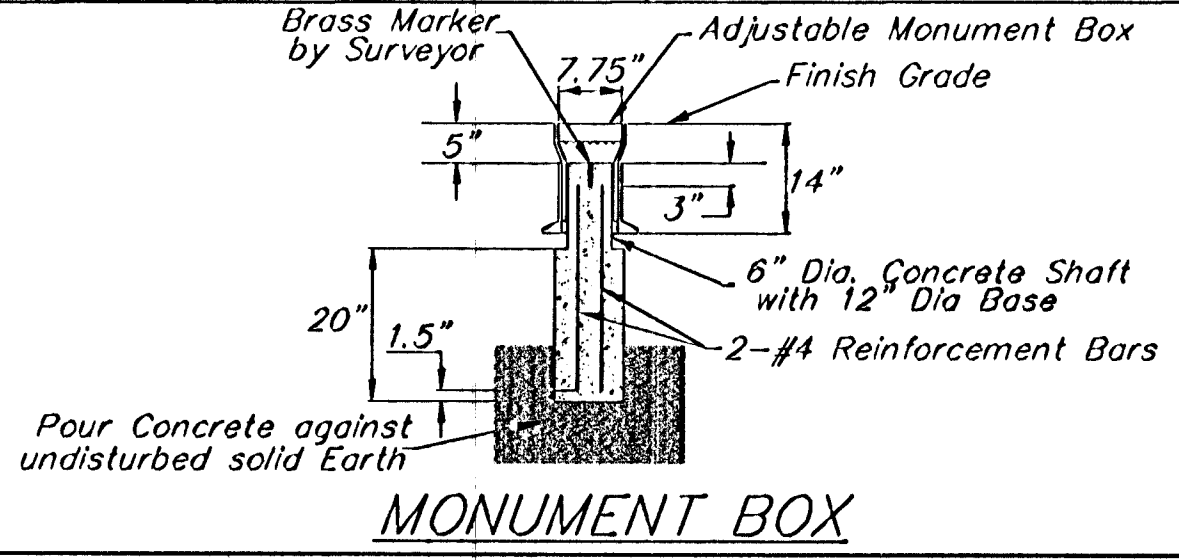
FHWA REGION NO.	STATE	PROJECT NO.	FISCAL YEAR	SHEET NO.	TOTAL SHEETS
7	KANSAS	87-N-0303-01	2003	15	143



Sta. 63+00.00 Match Line Sta. 63+14.58 Sta. 63+59.33 Begin Taper P.V.I. No V.C. ELEV.=75.62 -0.193% Sta. 65+19.33 End Taper P.V.I. No V.C. ELEV.=75.31 -0.310% Sta. 68+00.00 P.V.I. No V.C. ELEV.=74.44 +0.521% Sta. 69+00.00 Match Line

Note:
 Trees/Shrubs to be removed are marked thus:

Note:
 Pavement, Sidewalks, and Etc. To Be Removed Are Indicated By:



PROJECT NUMBER 472-83902	SHEET NAME PAV04	ENGINEERING DIRECTORY F:\Eng\Hydraulic_pav2\pav	STREET & SWS IMPROVEMENTS PAVING PLAN		BAUGHMAN COMPANY, P.A. ENGINEERING, SURVEYING, & PLANNING 310-262-7271 • 315 ELLIS • WICHITA, KANSAS 67211	SHEET 15
DESIGN JFB	DRAWN TCA	APPROVED JFB/KK	DATE Aug 03	SCALE 1"=20'		BAUGHMAN NO. 99-09-B451