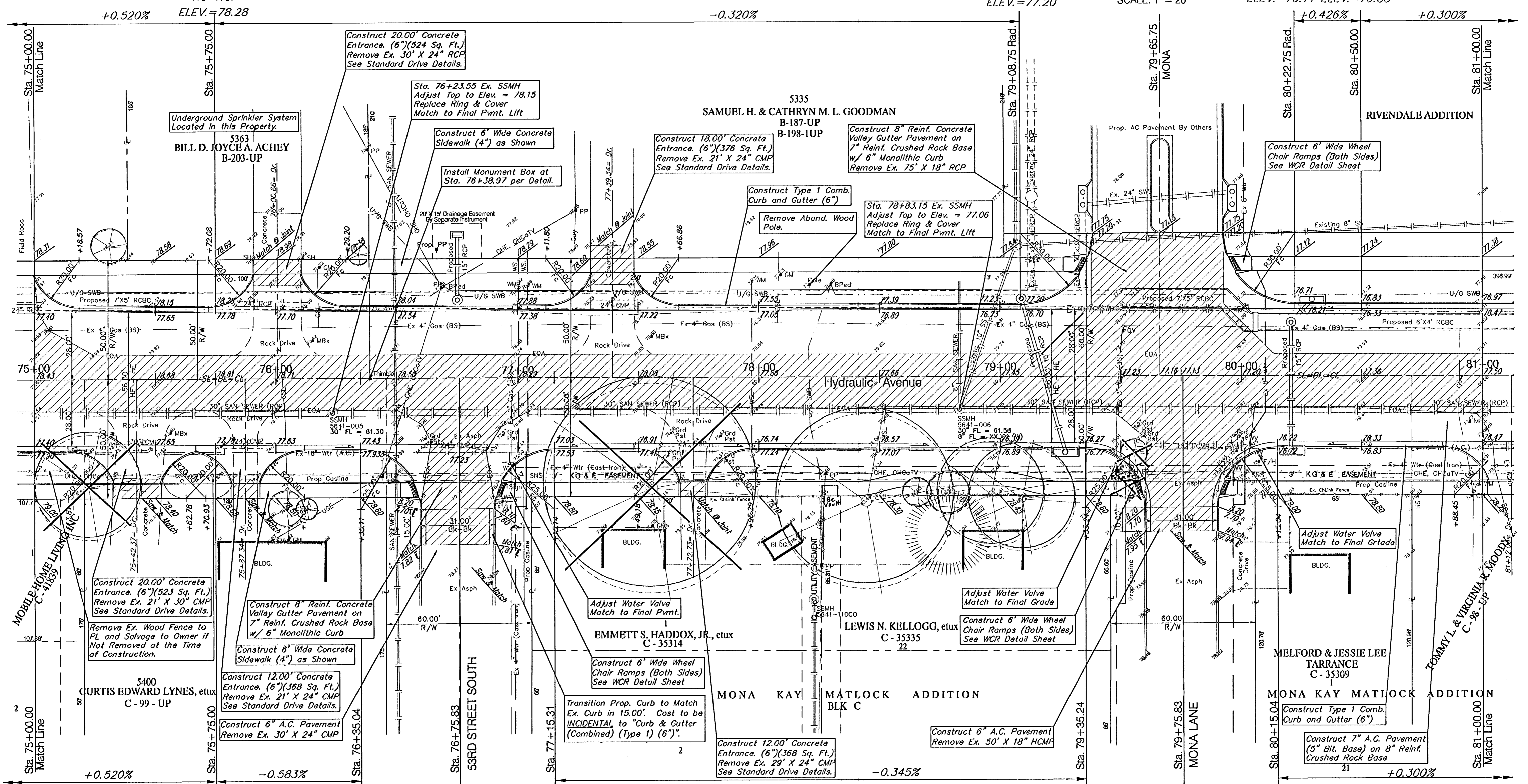
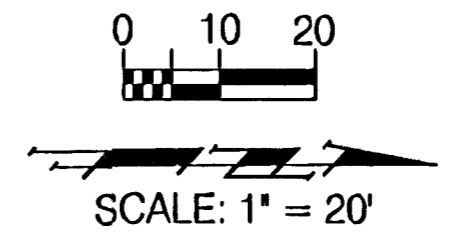


BENCHMARKS:
 BM #3 - RR Spike in West face of HLP, East side of Hydraulic,
 at House No. 5300 south. Sta. 82+33.6, 41' Rt.
 Elev. = 79.63 (City Datum) P.V.I.
 No V.C.

P.V.I.
 No V.C.
 ELEV. = 77.20

P.V.I. P.V.I.
 No V.C. No V.C.
 ELEV. = 76.71 ELEV. = 76.83

FWA REGION NO.	STATE	PROJECT NO.	FISCAL YEAR	SHEET NO.	TOTAL SHEETS
7	KANSAS	87-N-0303-01	2003	17	143



P.V.I.
 No V.C.
 ELEV. = 78.28
 T.C.

P.V.I.
 No V.C.
 ELEV. = 77.93

P.V.I.
 No V.C.
 ELEV. = 77.53

P.V.I.
 No V.C.
 ELEV. = 76.77

P.V.I.
 No V.C.
 ELEV. = 76.72

Note:
 Pavement, Sidewalks, and
 Etc. To Be Removed Are
 Indicated By:

Note:
 Trees/Shrubs to be
 removed are marked thus:

PROJECT NUMBER 472-83902	SHEET NAME PAV06	ENGINEERING DIRECTORY F:\Eng\Hydraulic_pav2\ Pav
DESIGN JFB	DRAWN TCA	APPROVED JFB/KK
DATE Aug 03	SCALE 1" = 20'	BAUGHMAN NO. 99-09-E451

STREET & SWS IMPROVEMENTS
PAVING PLAN
 HYDRAULIC AVE PAVING - SOUTH OF 5TH STREET SOUTH TO 4TH STREET SOUTH

BAUGHMAN COMPANY, P.A.
 ENGINEERING, SURVEYING, & PLANNING
 319-282-7271 • 315 ELLIS • WICHITA, KANSAS 67211

SHEET
 OF
 17
 143