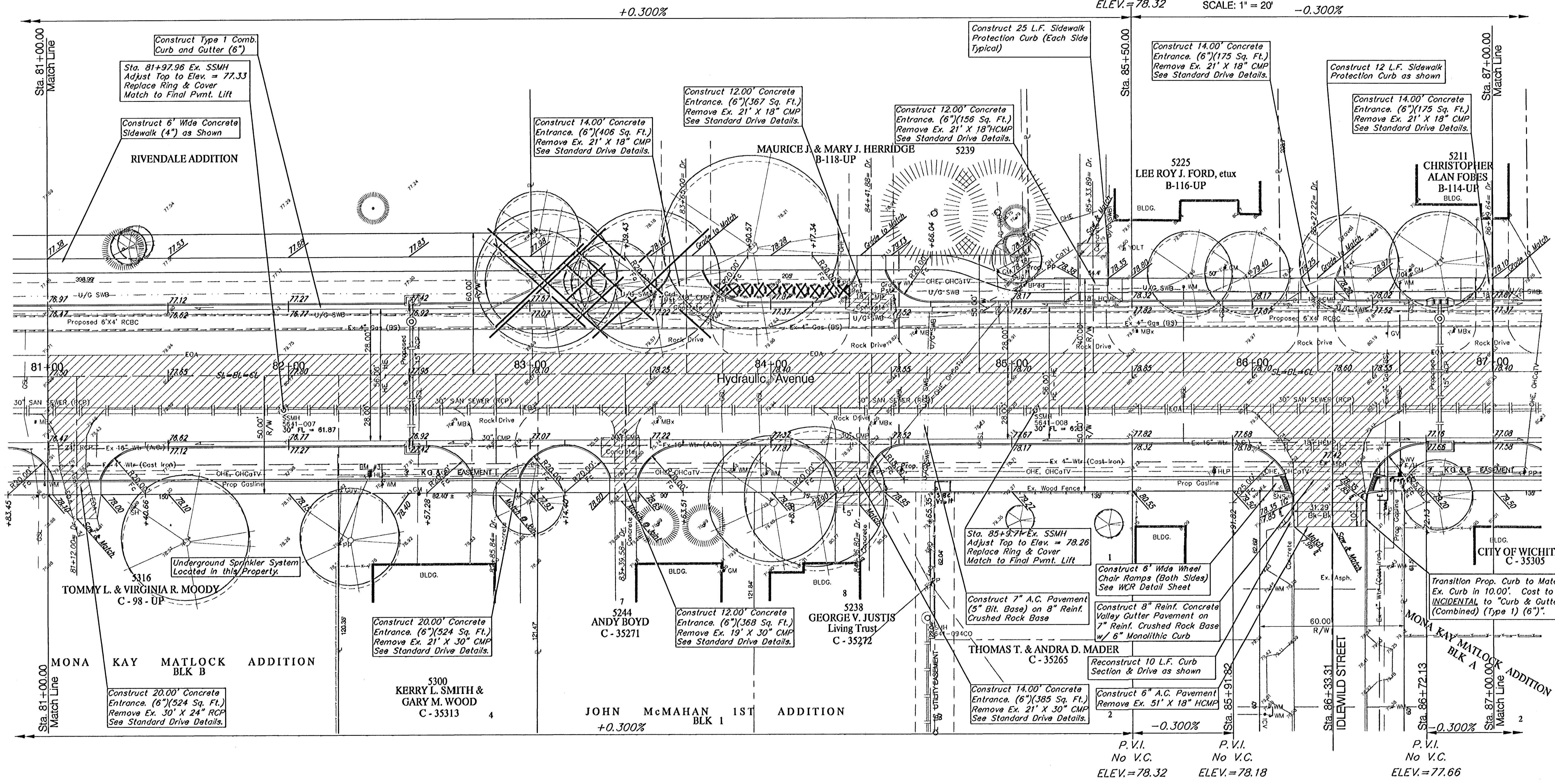
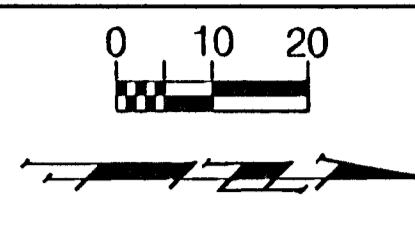


BENCHMARKS:
 BM #3 - RR Spike in West face of HLP, East side of Hydraulic,
 at House No. 5300 south. Sta. 82+33.6, 41' Rt.
 Elev. = 79.63 (City Datum)

FINA REGION NO.	STATE	PROJECT NO.	FISCAL YEAR	SHEET NO.	TOTAL SHEETS
7	KANSAS	87 N-0303-01	2003	18	143



Note:
 Trees/Shrubs to be removed are marked thus:

Note:
 Pavement, Sidewalks, and Etc. To Be Removed Are Indicated By:

PROJECT NUMBER 472-83902	SHEET NAME PAV07	ENGINEERING DIRECTORY F:\Eng\Hydraulic_phs2\Pav
DESIGN JFB	DRAWN TCA	APPROVED JFB/KK
DATE Aug 03	SCALE 1"=20'	BAUGHMAN NO. 99-09-E451

STREET & SWS IMPROVEMENTS
PAVING PLAN
 HYDRAULIC AVE PAVING - SOUTH OF 5TH STREET SOUTH TO 4TH STREET SOUTH

BAUGHMAN COMPANY, P.A.
 ENGINEERING, SURVEYING, & PLANNING
 318-282-7271 • 315 ELLIS • WICHITA, KANSAS 67211

SHEET 18
 OF 143