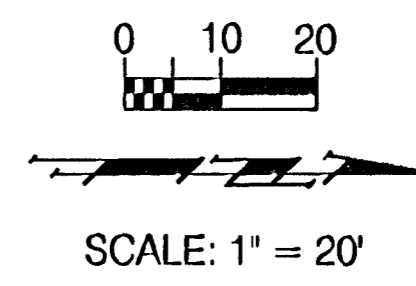
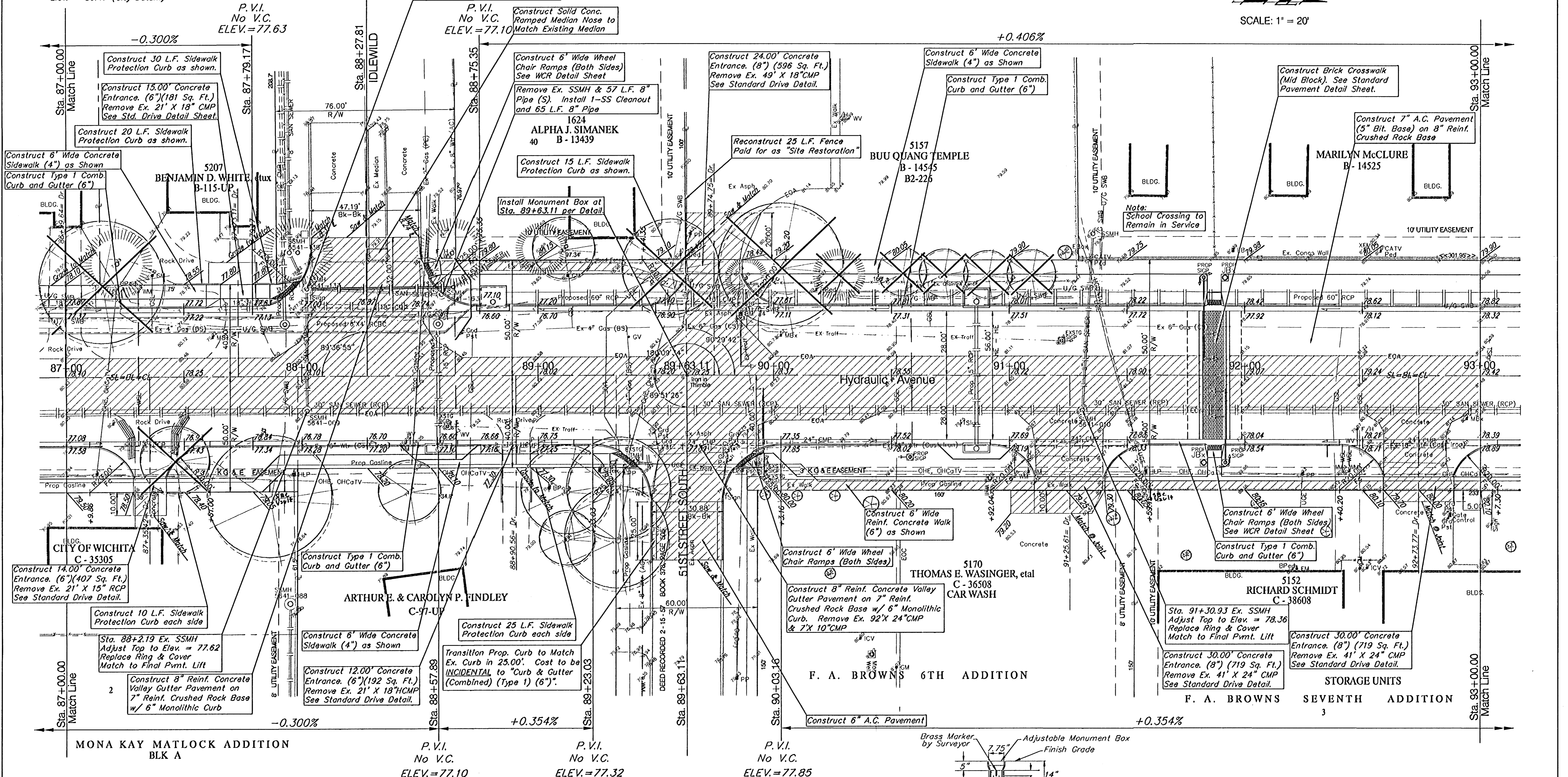


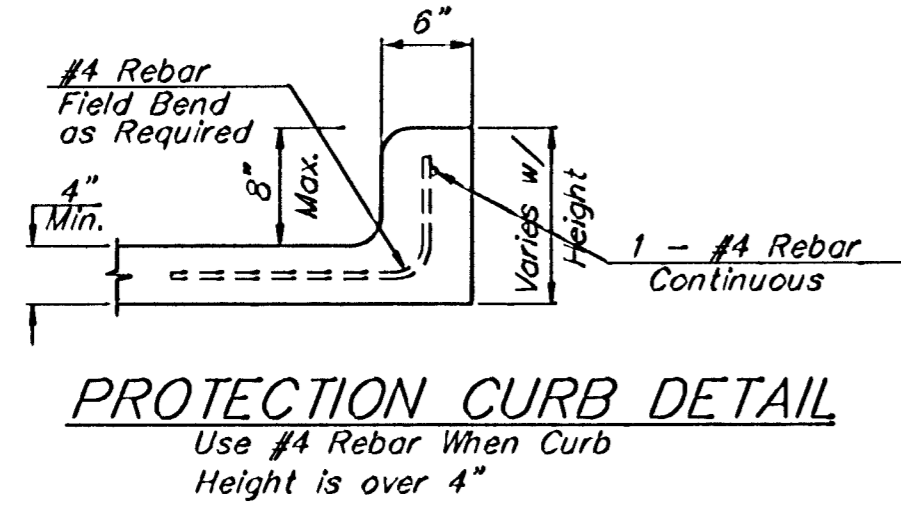
BENCHMARKS:
 BM #4 - City of Wichita Bench Mark Disc, School crossing signal light base on West side of Hydraulic at 51st St. South. Sta. 89+86.0, 26.7' Lt. Elev. = 80.47 (City Datum)



FHWA REGION NO.	STATE	PROJECT NO.	FISCAL YEAR	SHEET NO.	TOTAL SHEETS
7	KANSAS	87-N-0303-01	2003	19	143

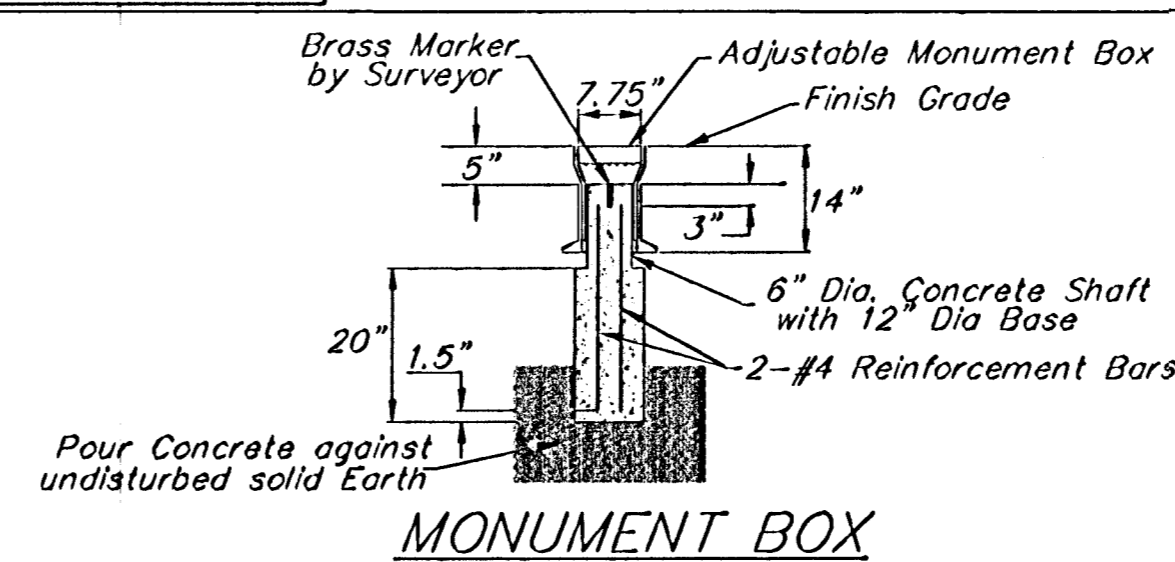


CITY OF WICHITA
 C-35305



Note:
 Trees/Shrubs to be removed are marked thus:

Note:
 Pavement, Sidewalks, and Etc. To Be Removed Are Indicated By:



PROJECT NUMBER	SHEET NAME	ENGINEERING DIRECTORY			
472-83902	PAV08	F:\Eng\Hydraulic_pav2\ Pav			
DESIGN	DRAWN	APPROVED	DATE	SCALE	BAUGHMAN NO.
JFB	TCA	JFB/KK	Aug 03	1"=20'	99-09-E451

STREET & SWS IMPROVEMENTS
PAVING PLAN
 HYDRAULIC AVE PAVING - SOUTH OF 6TH STREET SOUTH TO 47TH STREET SOUTH

BAUGHMAN COMPANY, P.A.
 ENGINEERING, SURVEYING, & PLANNING
 318-292-7271 • 315 ELLIS • WICHITA, KANSAS 67211

SHEET 19 OF 143