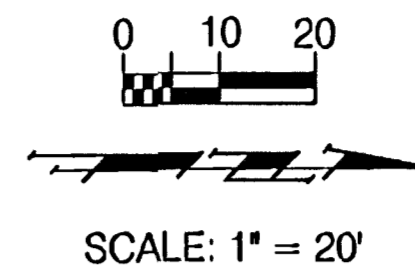
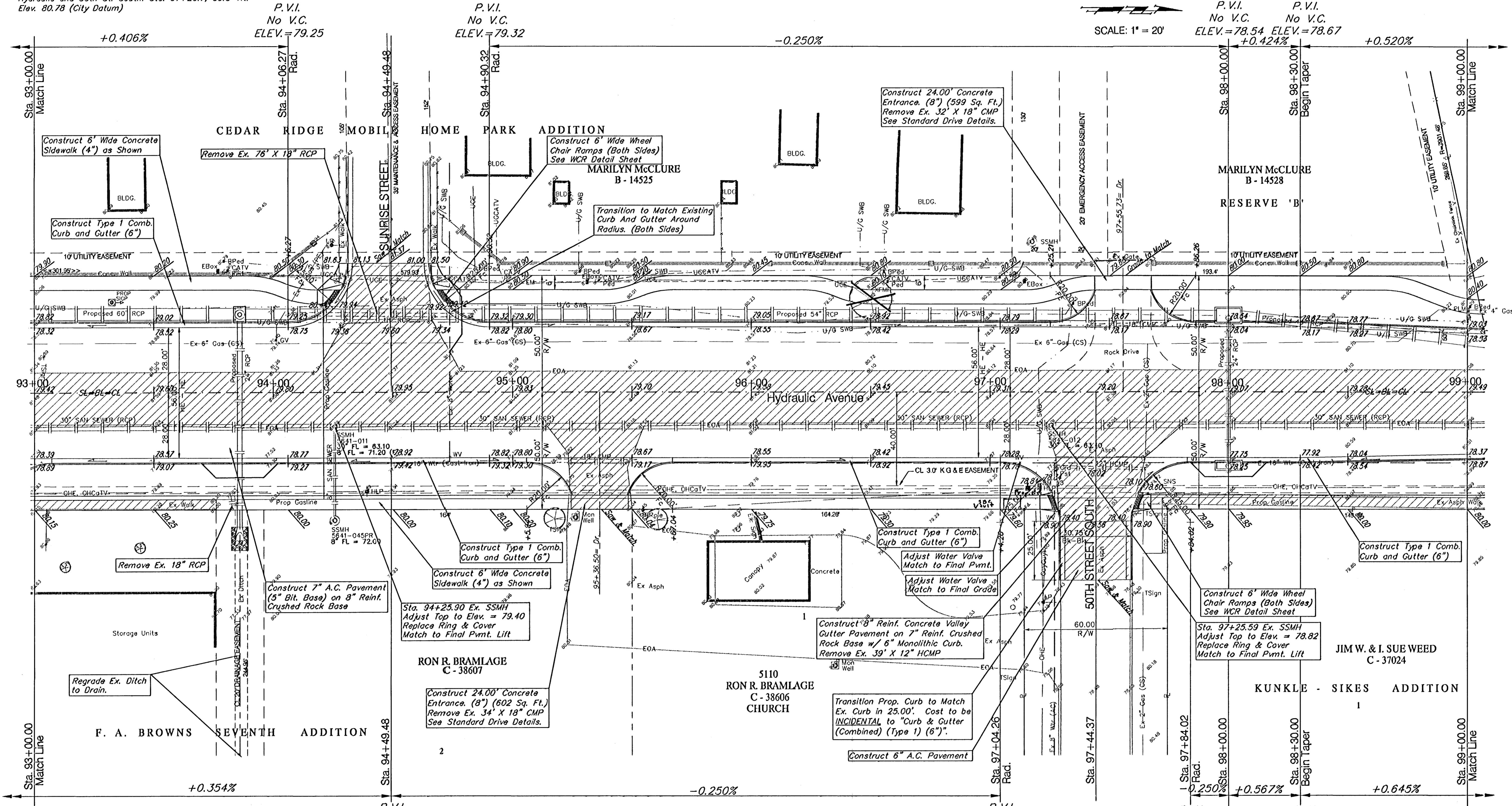


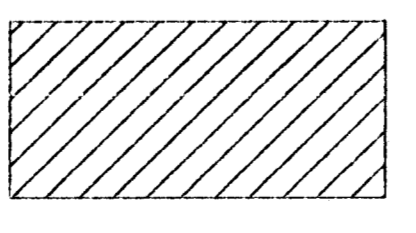
**BENCHMARKS:**  
 BM #5 - RR Spike in West face of HLP, southeast corner of Hydraulic and 50th St. South. Sta. 97+20.7, 39.8' Rt. Elev. 80.78 (City Datum)



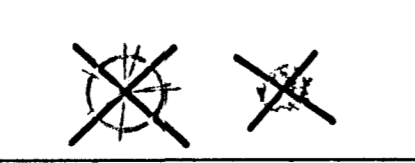
FEMA REGION NO.	STATE	PROJECT NO.	FISCAL YEAR	SHEET NO.	TOTAL SHEETS
7	KANSAS	87N-0303-01	2003	20	143



**Note:**  
 Pavement, Sidewalks, and Etc. To Be Removed Are Indicated By:



**Note:**  
 Trees/Shrubs to be removed are marked thus:



DESIGN	DRAWN	APPROVED	DATE	SCALE	BAUGHMAN NO.
JFB	TCA	JFB/KK	Aug 03	1"=20'	99-09-E451

PROJECT NUMBER: 472-83902  
 SHEET NAME: PAV09  
 ENGINEERING DIRECTORY: F:\Eng\Hydraulic\_ph2\ Pav  
**STREET & SWS IMPROVEMENTS**  
**PAVING PLAN**  
 HYDRAULIC AVE PAVING - SOUTH OF 57th STREET SOUTH TO 47th STREET SOUTH

**BAUGHMAN COMPANY, P.A.**  
 ENGINEERING, SURVEYING, & PLANNING  
 318-282-7271 • 315 ELLIS • WICHITA, KANSAS 67211

SHEET 20 OF 143