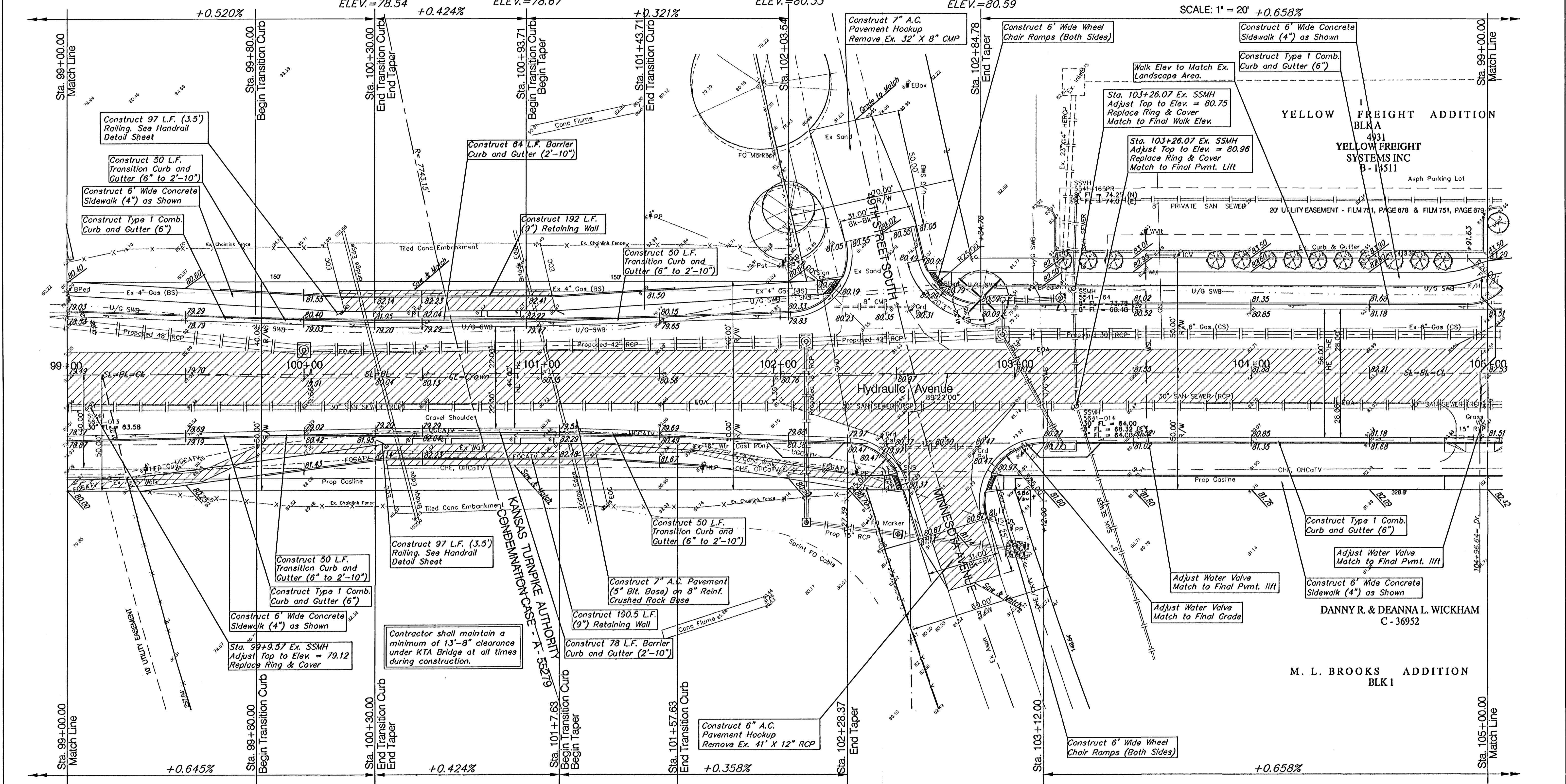
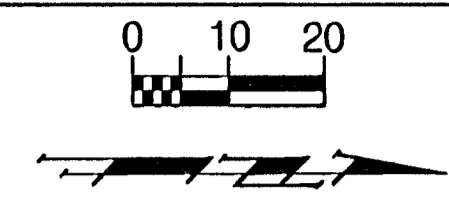


**BENCHMARKS:**  
 BM #6 - RR Spike in West face of HLP, East side of Hydraulic, south of Fairhaven St.  
 west of the entrance to Yellow Trucking Co. Sta. 105+13.3, 39.6' Rt.  
 Elev. = 83.23 (City Datum)

FHWA REGION NO.	STATE	PROJECT NO.	FISCAL YEAR	SHEET NO.	TOTAL SHEETS
7	KANSAS	87N-0303-01	2003	21	143



P.V.I.  
No V.C.  
ELEV.=79.71

P.V.I.  
No V.C.  
ELEV.=80.04

P.V.I.  
No V.C.  
ELEV.=80.47

P.V.I.  
No V.C.  
ELEV.=80.77

**Note:**  
 Pavement, Sidewalks, and Etc. To Be Removed Are Indicated By:

**Note:**  
 Trees/Shrubs to be removed are marked thus:

Contractor shall notify John Potter or Paul Ceter with the Kansas Turnpike Authority @ 682-4537 prior to construction.

PROJECT NUMBER 472-83902	SHEET NAME PAV10	ENGINEERING DIRECTORY F:\Eng\Hydraulic_ph42\Pav
DESIGN JFB	DRAWN TCA	APPROVED JFB/KK
DATE Aug 03	SCALE 1"=20'	BAUGHMAN NO. 99-09-E451

STREET & SWS IMPROVEMENTS  
**PAVING PLAN**  
 HYDRAULIC AVE PAVING - SOUTH OF 57th STREET SOUTH TO 47th STREET SOUTH

**BAUGHMAN COMPANY, P.A.**  
 ENGINEERING, SURVEYING, & PLANNING  
 318-282-7271 • 315 ELLIS • WICHITA, KANSAS 67211

SHEET 21 OF 143