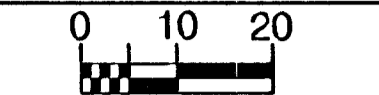
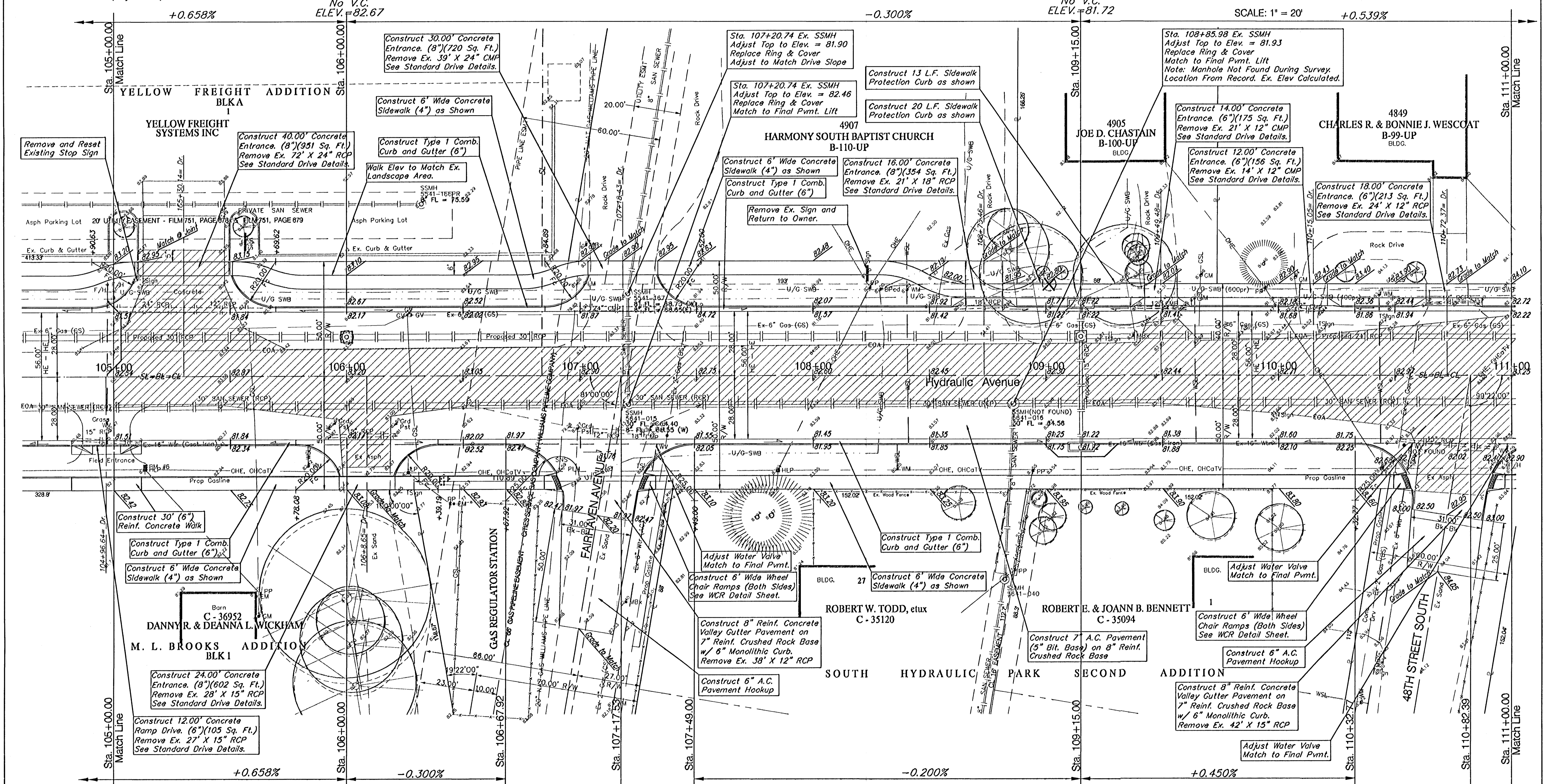


BENCHMARKS:
 BM #6 - RR Spike in West face of HLP, East side of Hydraulic, south of Fairhaven St.
 west of the entrance to Yellow Trucking Co. Sta. 105+13.3, 39.6' Rt.
 Elev. = 83.23 (City Datum)



FHA REGION NO.	STATE	PROJECT NO.	FISCAL YEAR	SHEET NO.	TOTAL SHEETS
7	KANSAS	87-N-0303-01	2003	22	143



Note:
 Pavement, Sidewalks, and Etc. To Be Removed Are Indicated By:

Note:
 Trees/Shrubs to be removed are marked thus:

P.V.I.
 No V.C.
 ELEV.=82.67

P.V.I.
 No V.C.
 ELEV.=82.47

P.V.I.
 No V.C.
 ELEV.=82.05

P.V.I.
 No V.C.
 ELEV.=81.72

P.V.I.
 No V.C.
 ELEV.=82.35

PROJECT NUMBER 472-83902	SHEET NAME PAV11	ENGINEERING DIRECTORY PAEngHydraulic_pav21Pav
DESIGN JFB	DRAWN TCA	APPROVED JFB/KK
DATE Aug 03	SCALE 1"=20'	BAUGHMAN NO 99-09-E451

STREET & SWS IMPROVEMENTS
PAVING PLAN
 HYDRAULIC AVE PAVING - SOUTH OF 57th STREET SOUTH TO 47th STREET SOUTH

BAUGHMAN COMPANY, P.A.
 ENGINEERING, SURVEYING, & PLANNING
 318-282-7271 • 318 ELLIS • WICHITA, KANSAS 67211

SHEET 22 OF 143