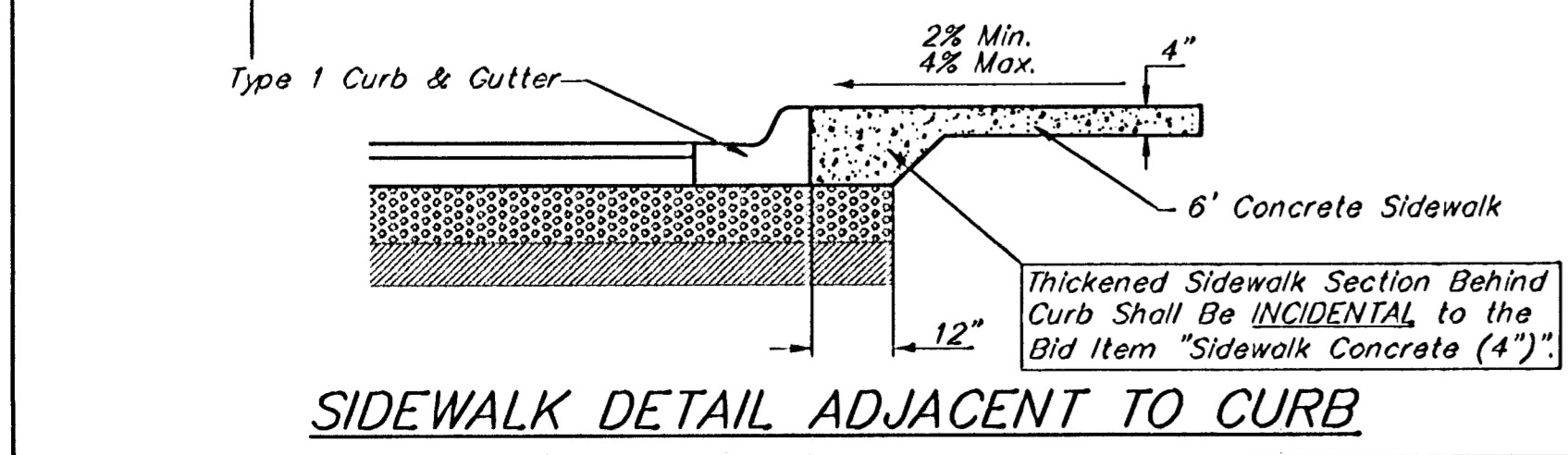
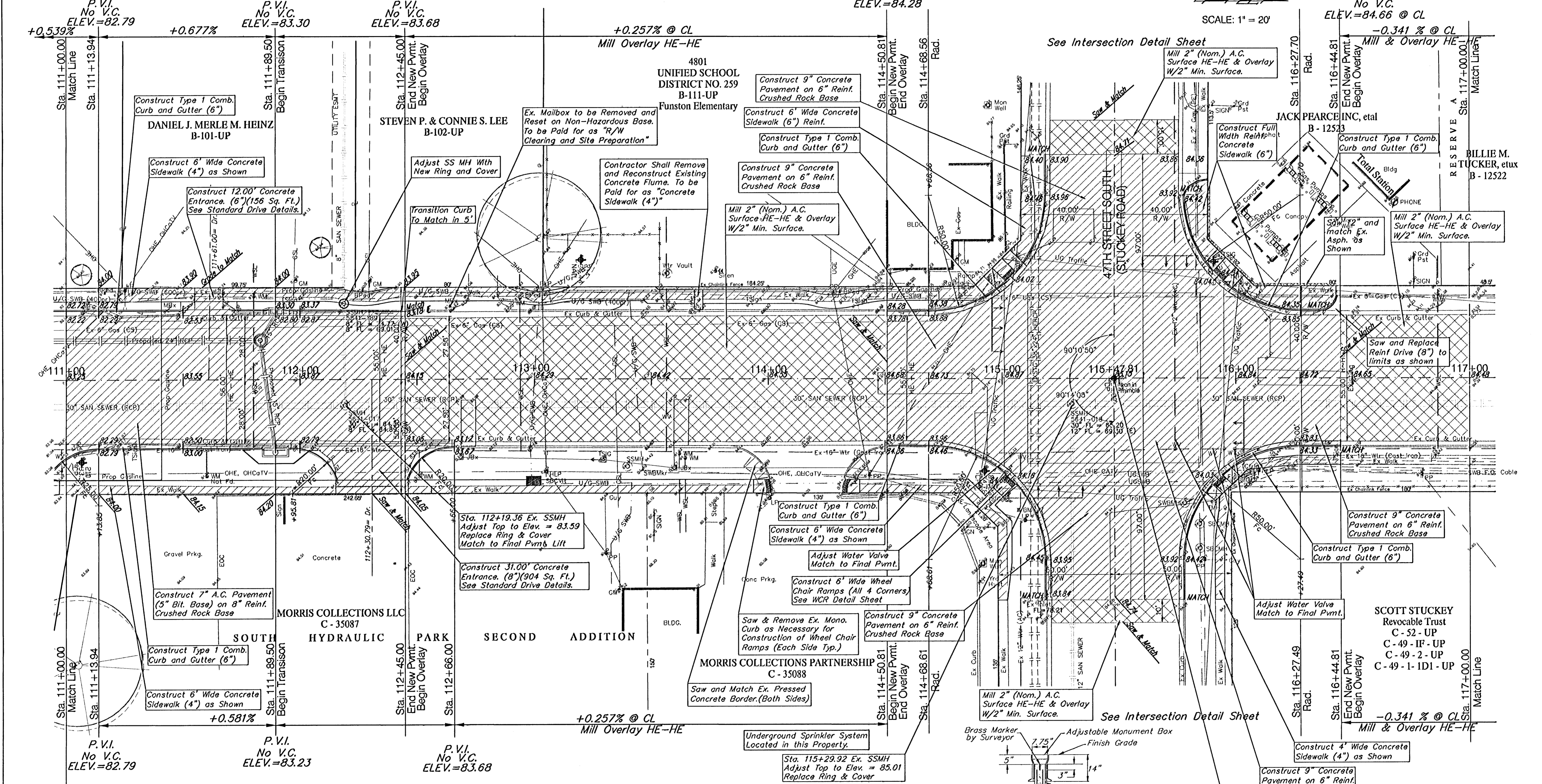
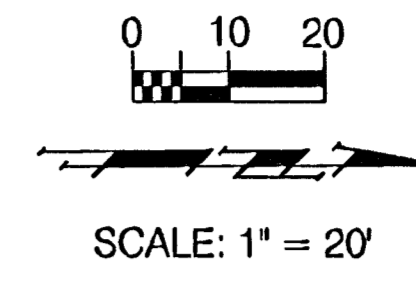


BENCHMARKS:
 BM #7 - City of Wichita bench Mark Disc on signal pole base 40.4' south and 57.5' East of centerlines of Hydraulic & 47th St. South. Sta. 115+07.4, 57.5' Rt. Elev. = 84.99 (City Datum)

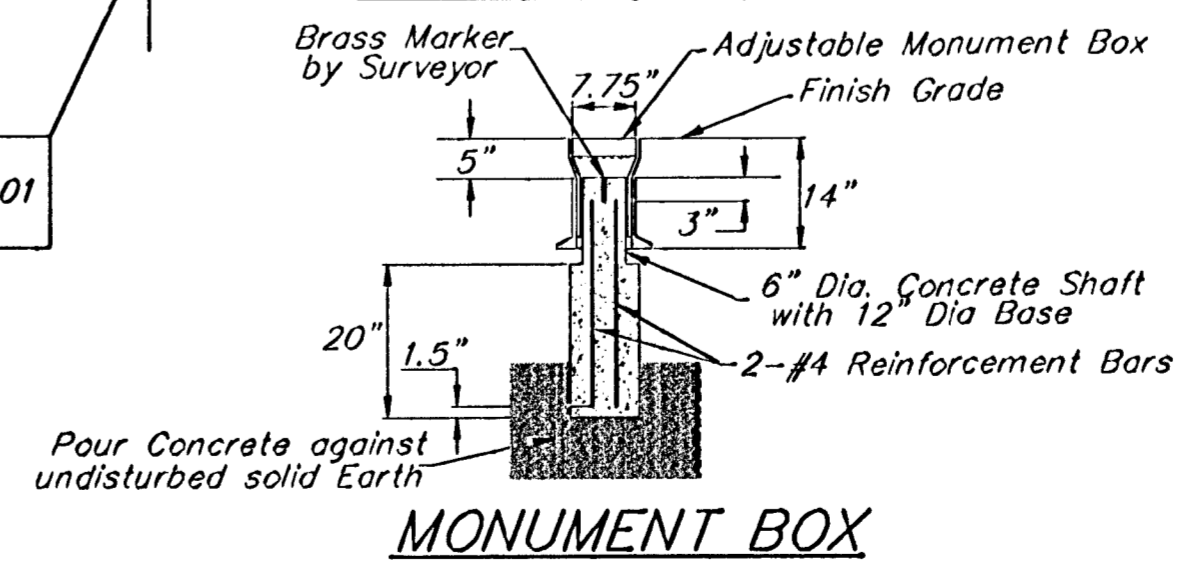
FIRMA REGION NO.	STATE	PROJECT NO.	FISCAL YEAR	SHEET NO.	TOTAL SHEETS
7	KANSAS	87 N-0303-01	2003	23	143



Note:
 Asphalt Surface to Be Milled & Overlaid are Indicated By:

Note:
 Pavement, Sidewalks, and Etc. To Be Removed Are Indicated By:

Note:
 Trees/Shrubs to be removed are marked thus:



PROJECT NUMBER 472-83902	SHEET NAME PAV12	ENGINEERING DIRECTORY R:\Eng\Hydraulic_phs2\Pav	STREET & SWS IMPROVEMENTS PAVING PLAN		 BAUGHMAN COMPANY, P.A. ENGINEERING, SURVEYING, & PLANNING 318-262-7271 • 318 ELLIS • WICHITA, KANSAS 67211	SHEET 23 OF 143
DESIGN JFB	DRAWN TCA	APPROVED JFB/KK	DATE Aug 03	SCALE 1" = 20'		