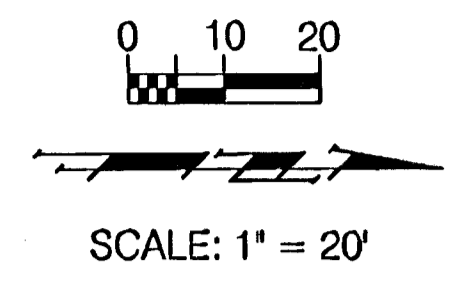


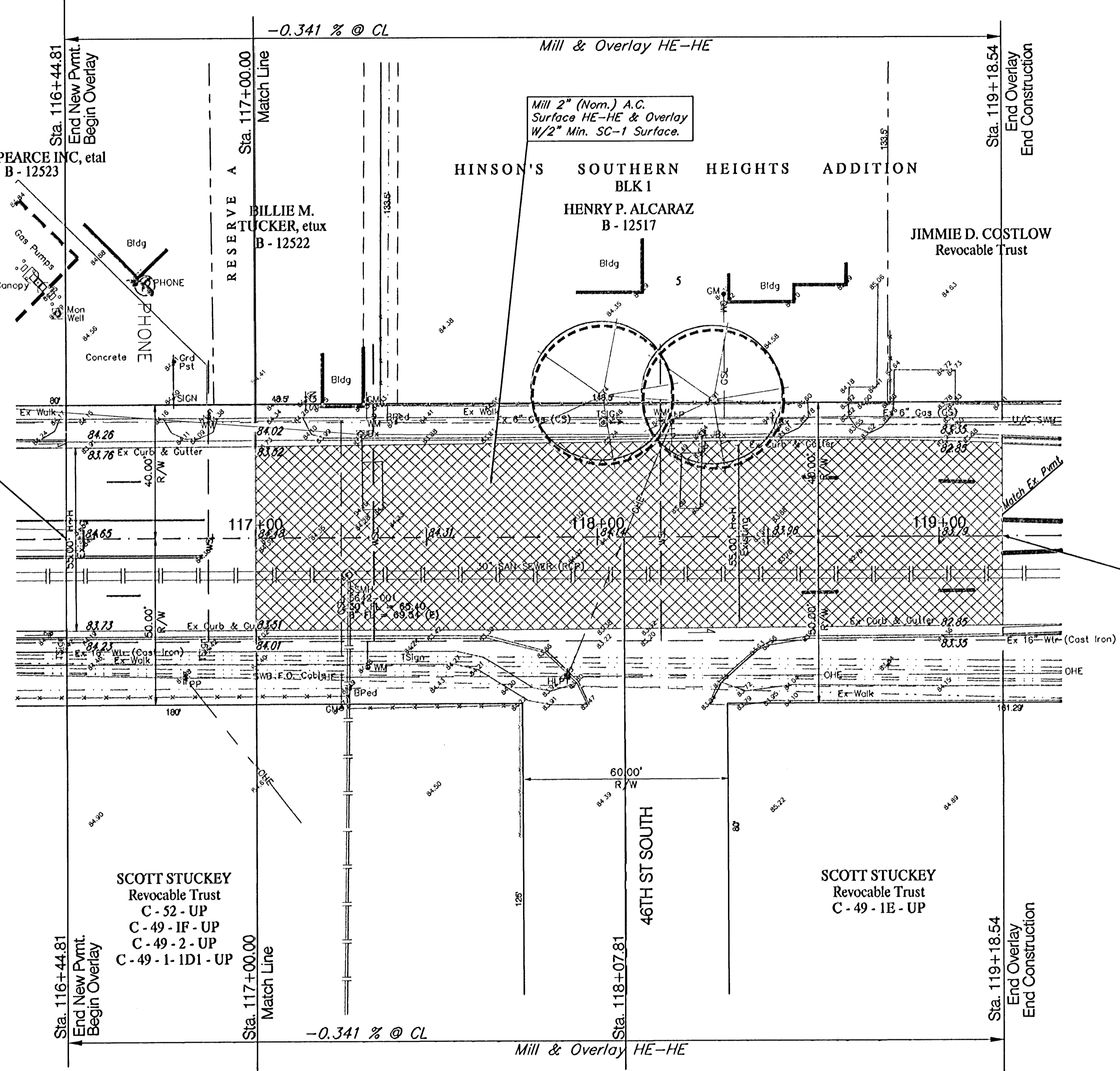
BENCHMARKS:
 BM #7 - City of Wichita bench Mark Disc on signal pole base 40.4' south
 and 57.5' East of centerlines of Hydraulic & 47th St. South.
 Sta. 115+07.4, 57.5' Rt. Elev. = 84.99 (City Datum)

FEMA REGION NO.	STATE	PROJECT NO.	FISCAL YEAR	SHEET NO.	TOTAL SHEETS
7	KANSAS	87 N-0303-01	2003	24	143

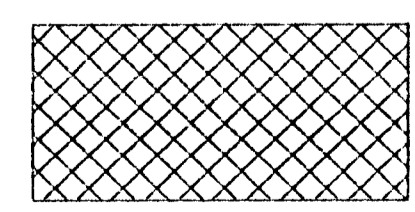


STA. 116+44.81
 END KDOT Project
 87 N-0303-01

STA. 119+18.54
 END CONSTRUCTION
 KDOT Project
 87 N-0303-01



Note:
 Asphalt Surface To Be Milled
 & Overlaid are Indicated By:



PROJECT NUMBER 472-83902		SHEET NAME PAV13		ENGINEERING DIRECTORY P:\Eng\Hydraulic_pav2\ Pav	
DESIGN JFB	DRAWN TCA	APPROVED JFB/KK	DATE Aug 03	SCALE 1"=20'	BAUGHMAN NO 99-09-E451

STREET & SWS IMPROVEMENTS
PAVING PLAN
 HYDRAULIC AVE PAVING - SOUTH OF 57th STREET SOUTH TO 47th STREET SOUTH

BAUGHMAN COMPANY, P.A.
 ENGINEERING, SURVEYING, & PLANNING
 316-262-7271 • 315 ELLIS • WICHITA, KANSAS 67211

SHEET
 24
 OF
 143