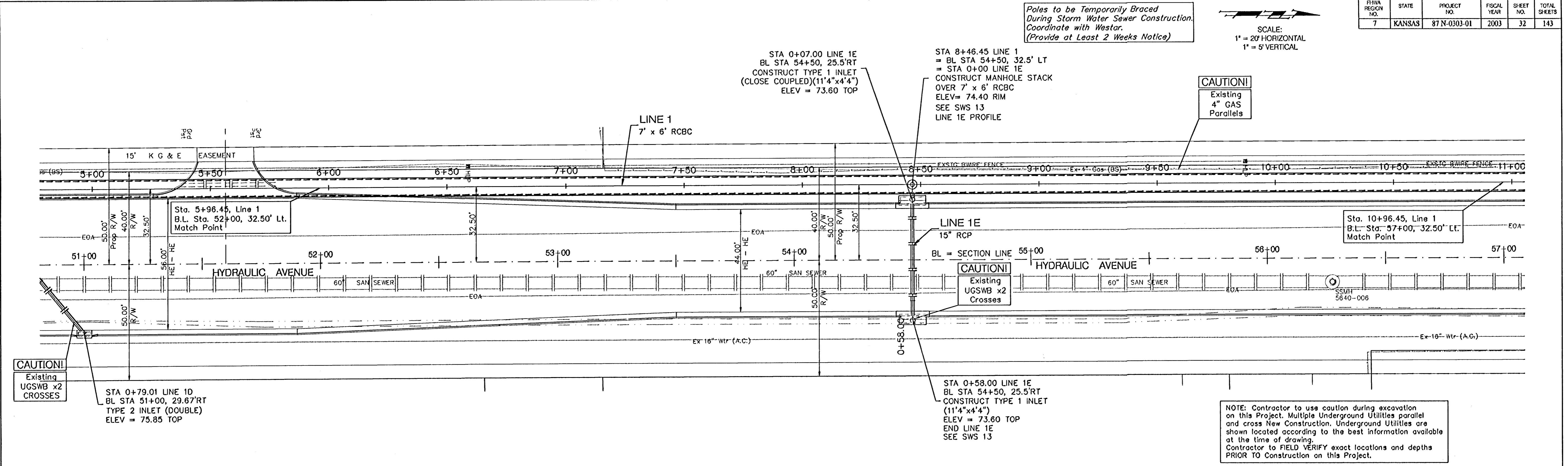


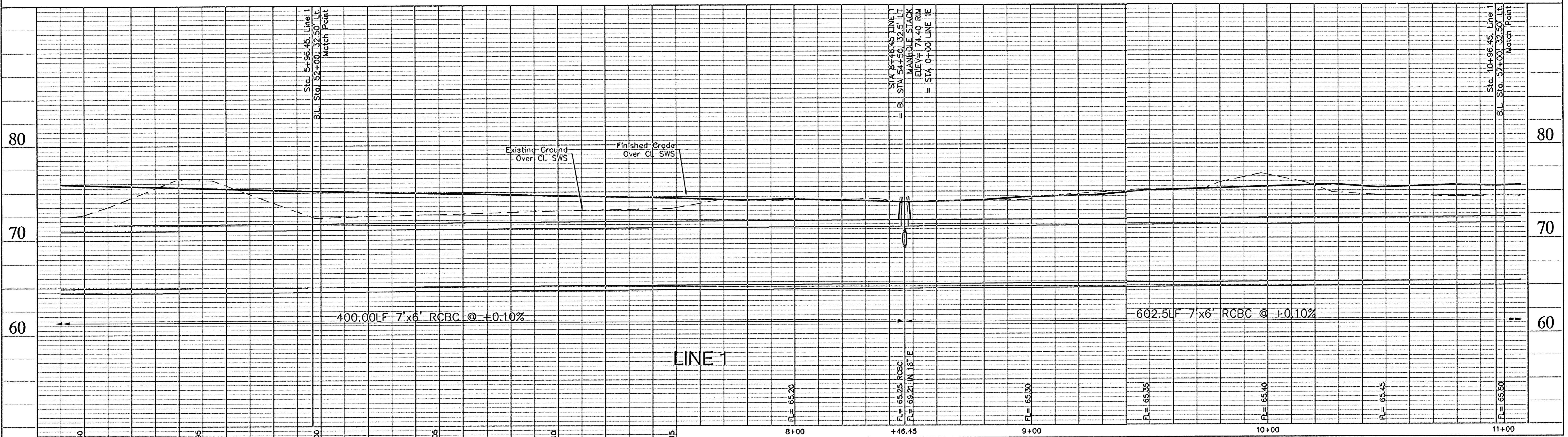
FIRMA REGION NO.	STATE	PROJECT NO.	FISCAL YEAR	SHEET NO.	TOTAL SHEETS
7	KANSAS	87 N-0303-01	2003	32	143

Poles to be Temporarily Braced During Storm Water Sewer Construction. Coordinate with Westor. (Provide at Least 2 Weeks Notice)

SCALE:
1" = 20' HORIZONTAL
1" = 5' VERTICAL



NOTE: Contractor to use caution during excavation on this Project. Multiple Underground Utilities parallel and cross New Construction. Underground Utilities are shown located according to the best information available at the time of drawing. Contractor to FIELD VERIFY exact locations and depths PRIOR TO Construction on this Project.



PROJECT NUMBER 472-83902	SHEET NAME SWS02	ENGINEERING DIRECTORY F:\HYD2\SWS	CAPITAL IMPROVEMENT PROJECT HYDRAULIC PH2 STORM WATER SEWER LINE 1			BAUGHMAN COMPANY, P.A. ENGINEERING, SURVEYING, & PLANNING 310-262-7271 • 315 ELLIS • WICHITA, KANSAS 67211	SHEET 32 OF 143
DESIGN KK	DRAWN STAFF	APPROVED JFB	DATE March 04	SCALE 1:20,1:5	BAUGHMAN NO. 99-09-E451		