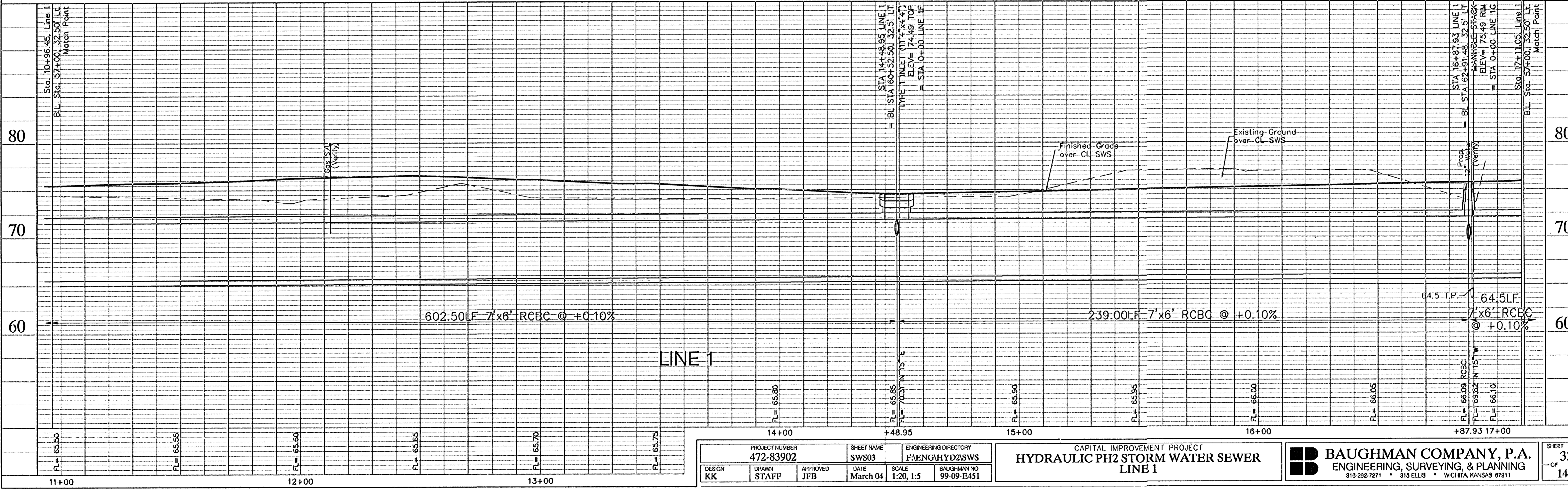
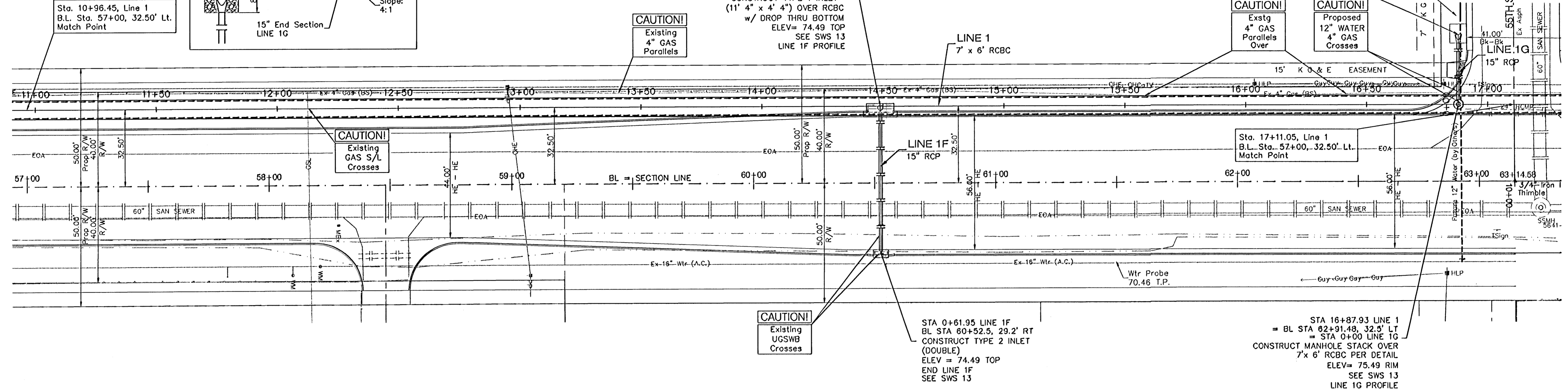


NOTE: Contractor to use caution during excavation on this Project. Multiple Underground Utilities parallel and cross New Construction. Underground Utilities are shown located according to the best information available at the time of drawing. Contractor to FIELD VERIFY exact locations and depths PRIOR TO Construction on this Project.

Poles to be Temporarily Braced During Storm Water Sewer Construction. Coordinate with Westor. (Provide at Least 2 Weeks Notice)

STA 0+29.5 LINE 1G  
BL STA 62+91.5, 62.0' LT  
INSTALL 15" END SECTION WITH 6.2 SY LIGHT STONE RIP RAP. SEE DTL THIS SHT. END LINE 1G SEE SWS 13

SCALE:  
1" = 20' HORIZONTAL  
1" = 5' VERTICAL



|                             |                     |   |
|-----------------------------|---------------------|---|
| PROJECT NUMBER<br>472-83902 | SHEET NAME<br>SWS03 | ENGINEERING DIRECTORY<br>FAENGLHYD2/SWS |
| DESIGN<br>KK                | DRAWN<br>STAFF      | APPROVED<br>JFB                         |
| DATE<br>March 04            | SCALE<br>1:20, 1:5  | BAUGHMAN NO<br>99-09-E451               |

CAPITAL IMPROVEMENT PROJECT  
**HYDRAULIC PH2 STORM WATER SEWER  
LINE 1**

**BAUGHMAN COMPANY, P.A.**  
ENGINEERING, SURVEYING, & PLANNING  
318-282-7271 • 318 ELLIS • WICHITA, KANSAS 67211