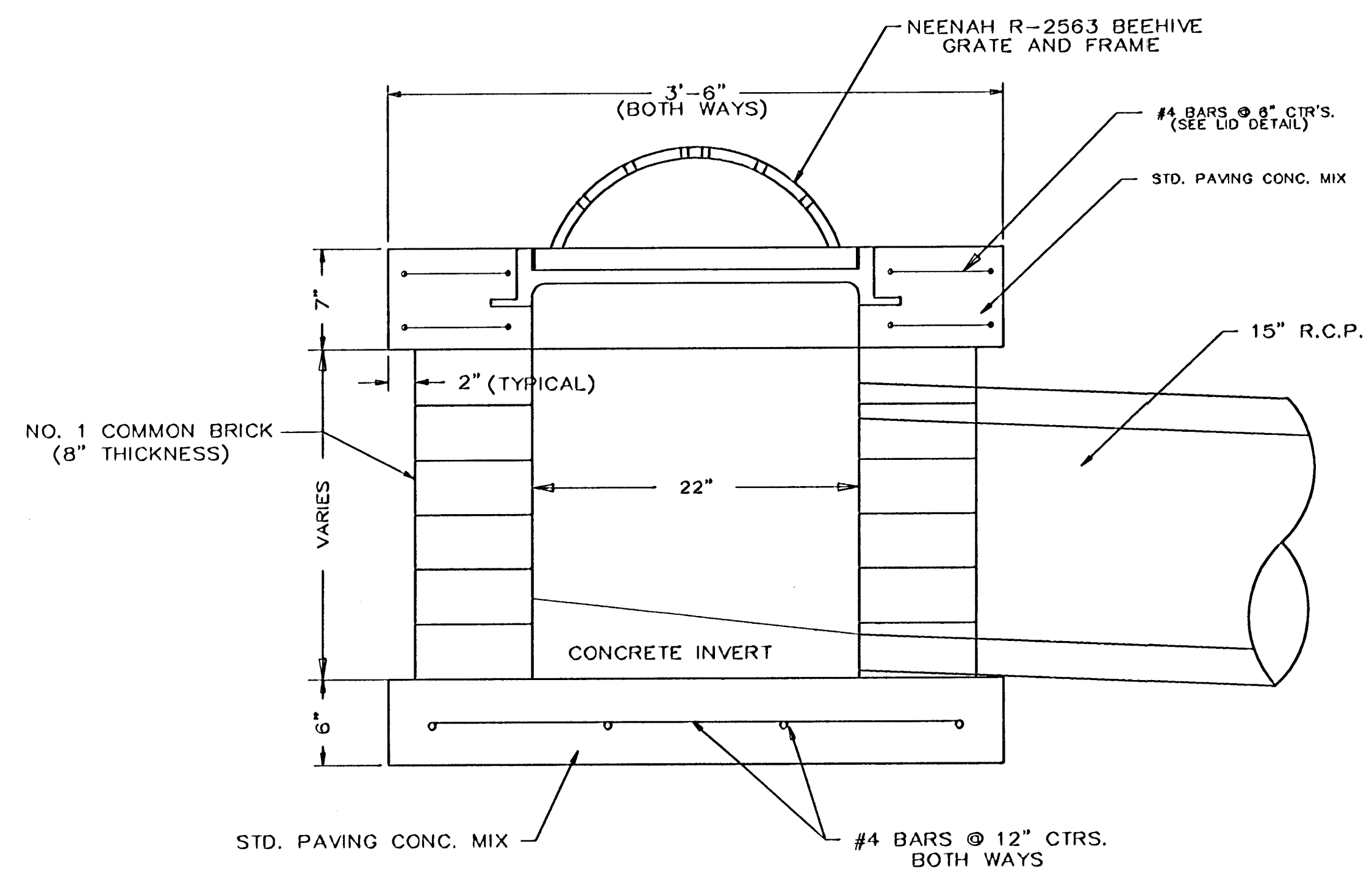
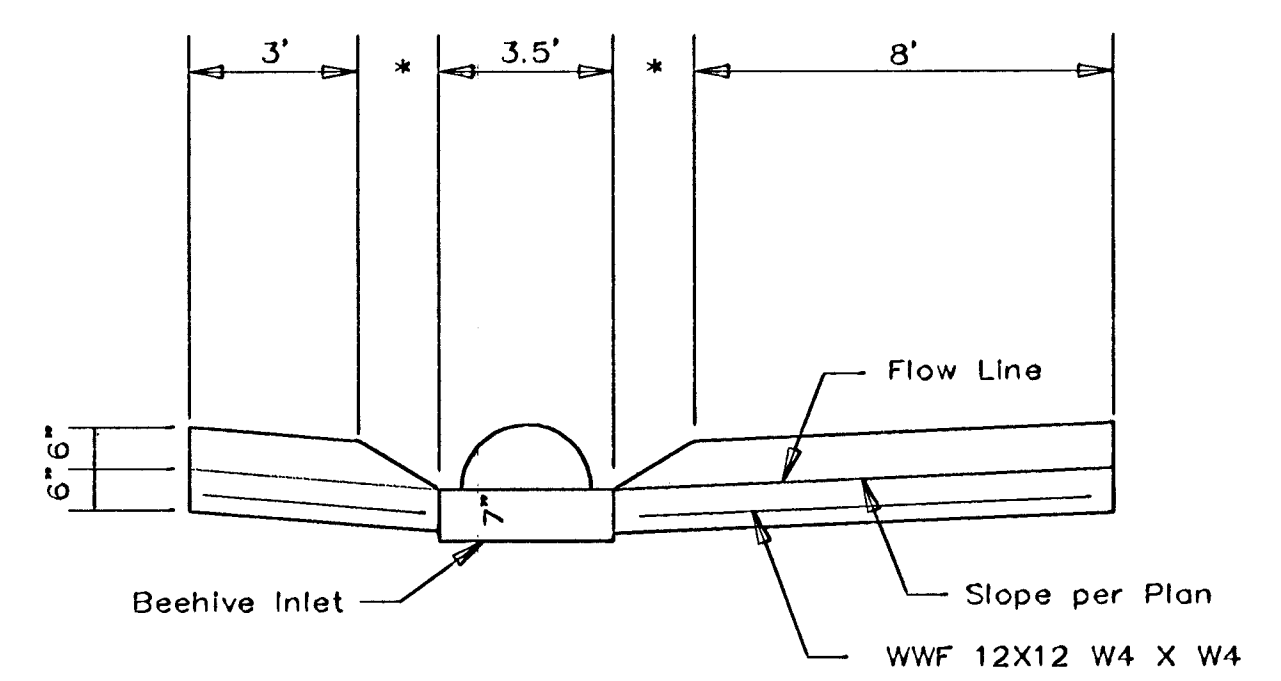


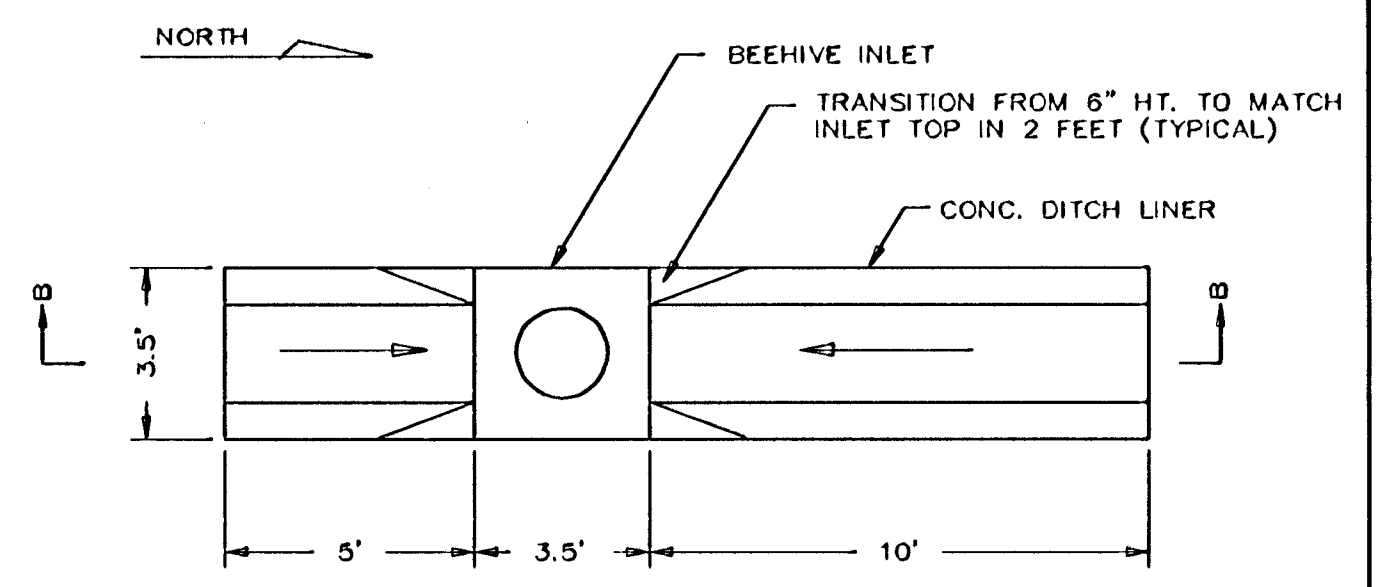
FWMA REGION NO.	STATE	PROJECT NO.	FISCAL YEAR	SHEET NO.	TOTAL SHEETS
7	KANSAS	87-N-0303-01	2003	52	143



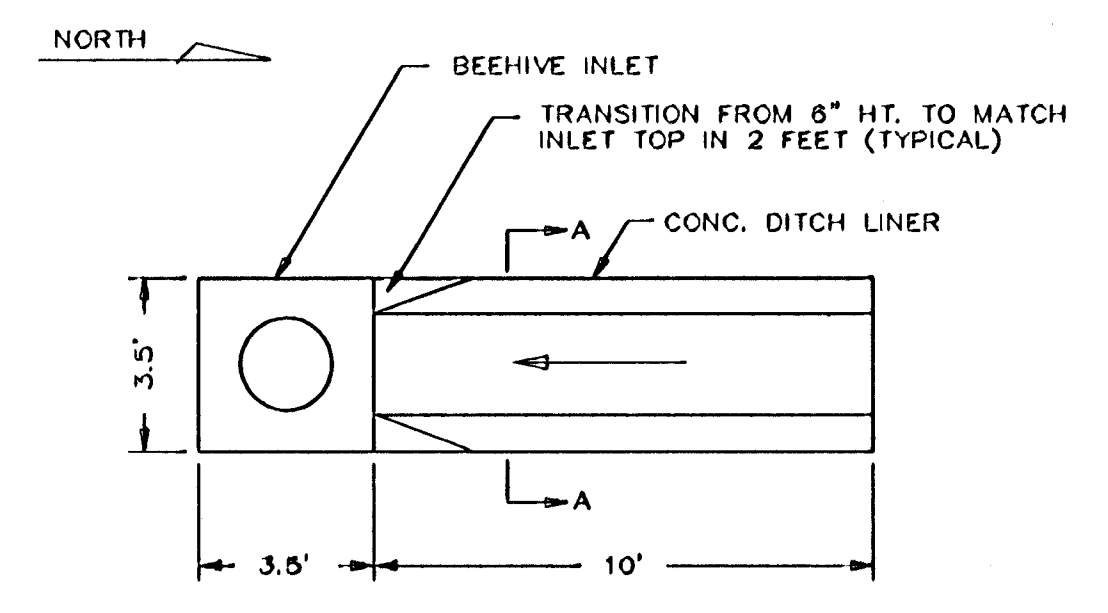
SIDE VIEW



SECTION B-B



DITCH LINING DETAIL AT STATION 3+12, 119TH ST. WEST



DITCH LINING DETAIL AT STATION 7+00, 119TH ST. WEST

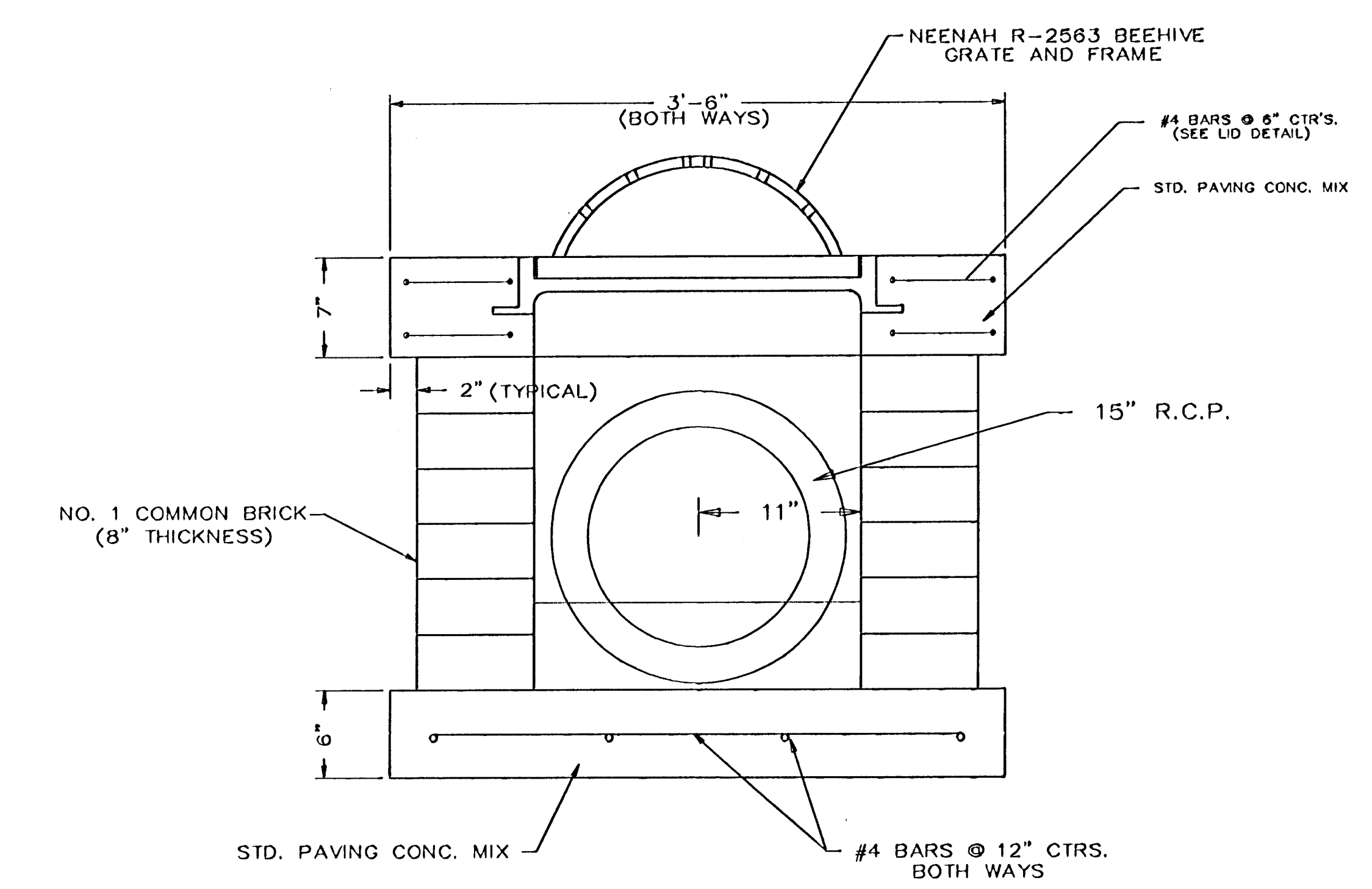
GENERAL NOTES

INLET INVERT SHALL BE SHAPED WITH 8 SACK SAND MIX CONCRETE TO CREATE FLOW CHANNELS AND TO INCREASE HYDRAULIC EFFICIENCY SUCH THAT THE INLET WILL BE SELF CLEANING BETWEEN ALL INLET AND/OR OUTLET PIPES.

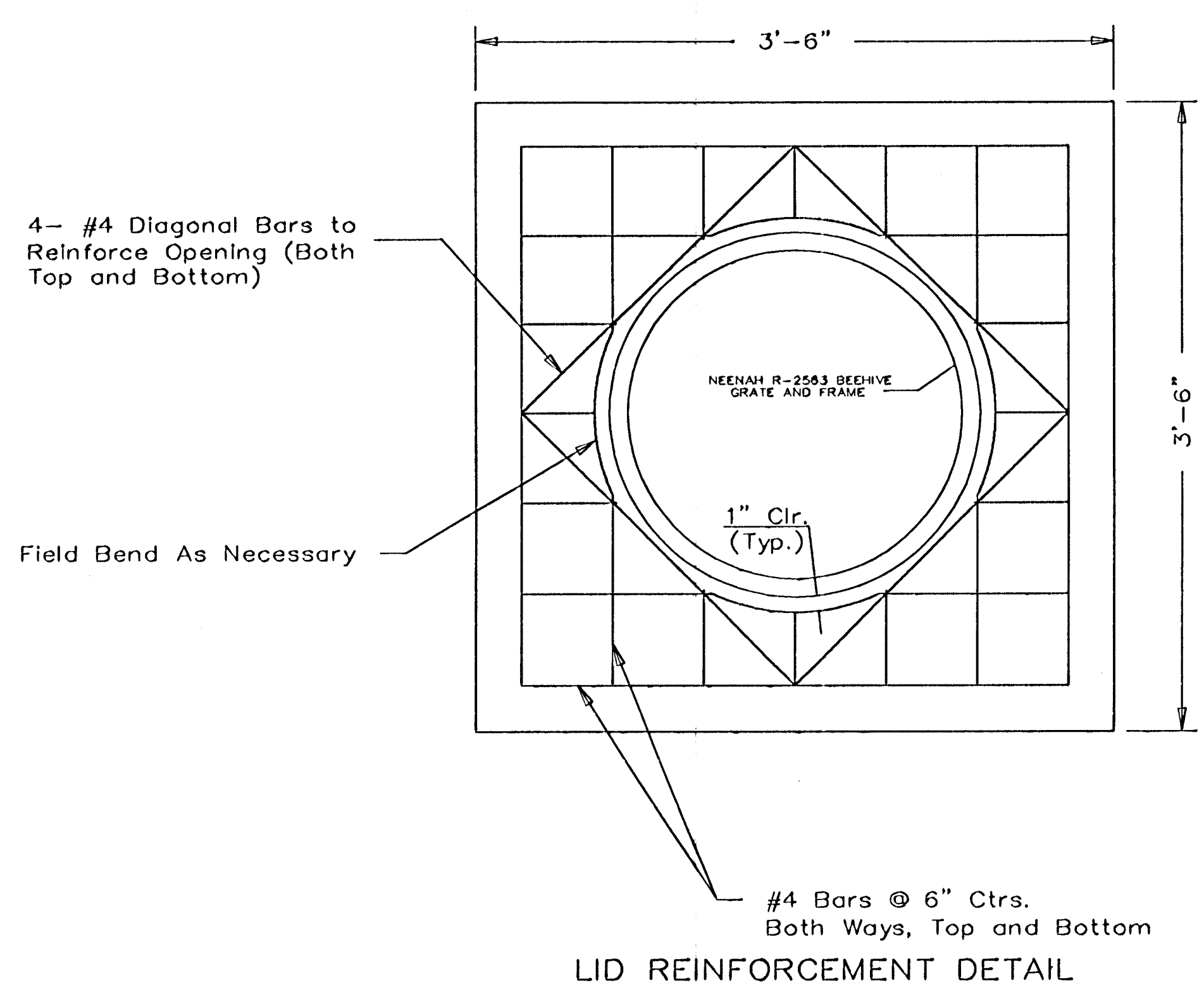
CONCRETE TOPS TO BE INSTALLED ON THIN MORTAR CUSHION TO INSURE FULL SUPPORT ALONG BRICK WALLS. CONCRETE TOPS MAY BE CAST IN PLACE OR PRECAST. CONCRETE USED FOR INLET CONSTRUCTION SHALL BE CONCRETE PAVEMENT MIX.

INLET TOP REINFORCING SHALL BE SPACED ON 6" MAX. CENTERS. BARS IN INLET TOP TO BE FIELD BENT OR CUT TO CLEAR BEEHIVE MANHOLE INLET RING.

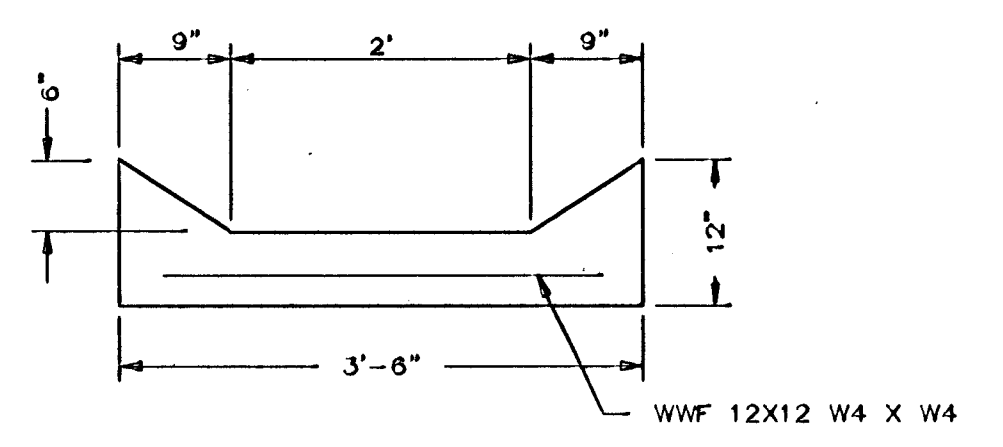
THE ENDS OF ALL PIPES INSTALLED IN INLETS SHALL BE CUT OFF FLUSH WITH THE INSIDE FACE OF THE INLET WALL.



VIEW FROM CURB LINE



LID REINFORCEMENT DETAIL



SECTION A-A

PROJECT NUMBER 472-83902	SHEET NAME Beehive	ENGINEERING DIRECTORY FA/Hydraulic phs2/details
DESIGN STAFF	DRAWN STAFF	APPROVED JFB
DATE Nov. 2003	SCALE None	BAUGHMAN NO 99-09-E451

CAPITAL IMPROVEMENT PROJECT
STANDARD DETAILS for
BEEHIVE INLETS
HYDRAULIC AVENUE PAVING - 57th STREET SOUTH TO 47th STREET SOUTH

BAUGHMAN COMPANY, P.A.
ENGINEERING, SURVEYING, & PLANNING
316-282-7271 • 315 ELLIS • WICHITA, KANSAS 67211