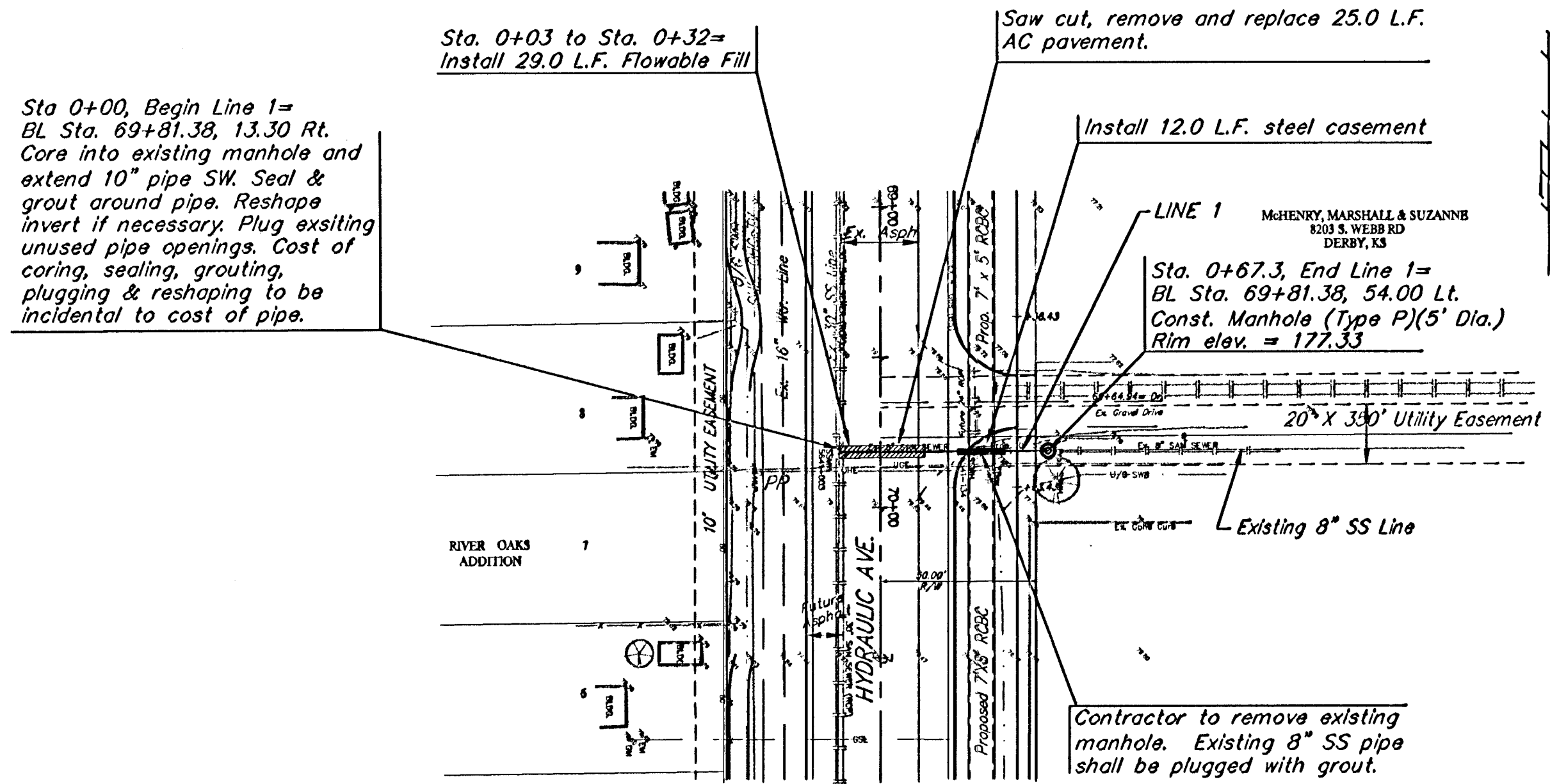


BENCHMARKS:
 BM #1 - City of Wichita Bench Mark Disc, 42' North and 41' West of Centerlines Hydraulic and 55th St. South. Sta. 63+56.1, 41' Lt. Elev. = 76.19 (City Datum)

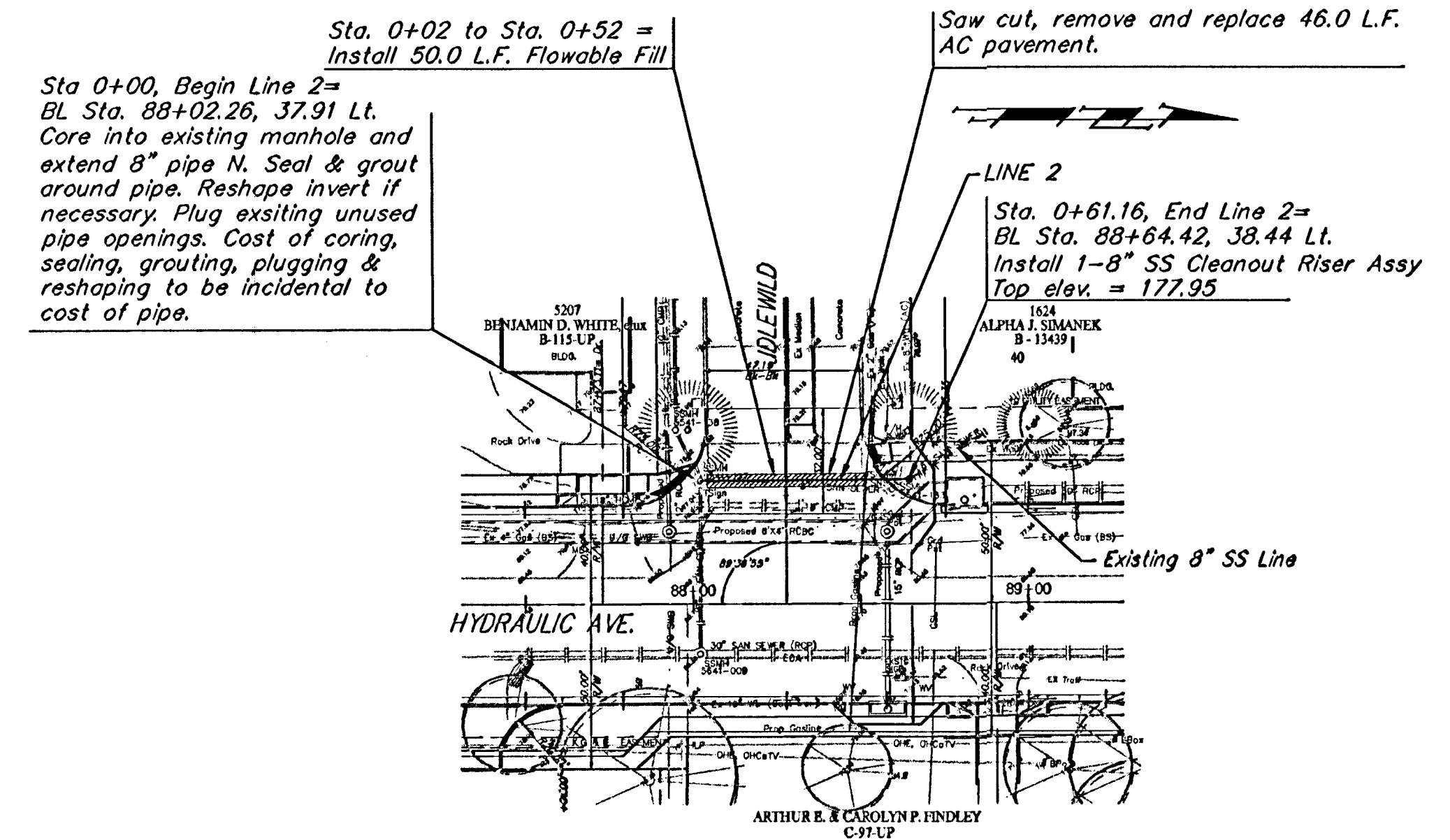
BENCHMARKS:
 BM #4 - City of Wichita Bench Mark Disc, School crossing signal light base on West side of Hydraulic at 51st St. South. Sta. 89+86.0, 26.7' Lt. Elev. = 80.47 (City Datum)

FHWA REGION NO.	STATE	PROJECT NO.	FISCAL YEAR	SHEET NO.	TOTAL SHEETS
7	KANSAS	87-N-0303-01	2003	60	143

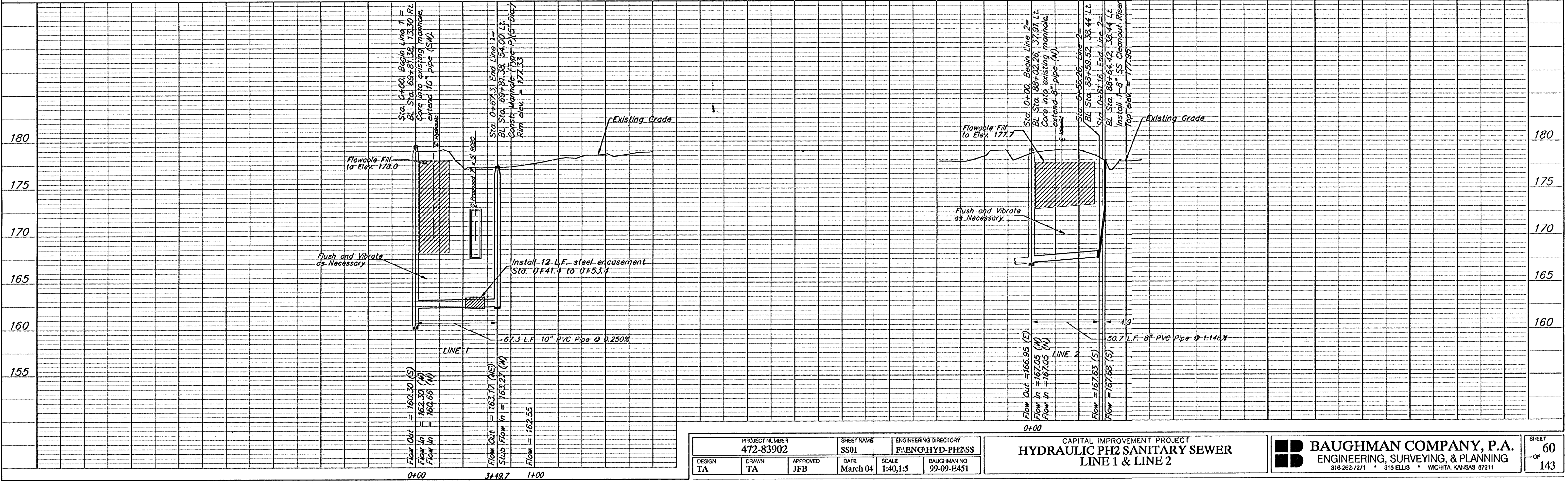
Scale: 1" = 40' Horizontal
 1" = 5' Vertical
 • = Iron



LINE 1



LINE 2



PROJECT NUMBER 472-83902	SHEET NAME SS01	ENGINEERING DIRECTORY FAENGHYD-PH2SS
DESIGN TA	DRAWN TA	APPROVED JFB
DATE March 04	SCALE 1:40,1:5	BAUGHMAN NO 99-09-E451

CAPITAL IMPROVEMENT PROJECT
HYDRAULIC PH2 SANITARY SEWER
 LINE 1 & LINE 2

BAUGHMAN COMPANY, P.A.
 ENGINEERING, SURVEYING, & PLANNING
 318-282-7271 • 315 ELLIS • WICHITA, KANSAS 67211

SHEET
 OF
 60
 143