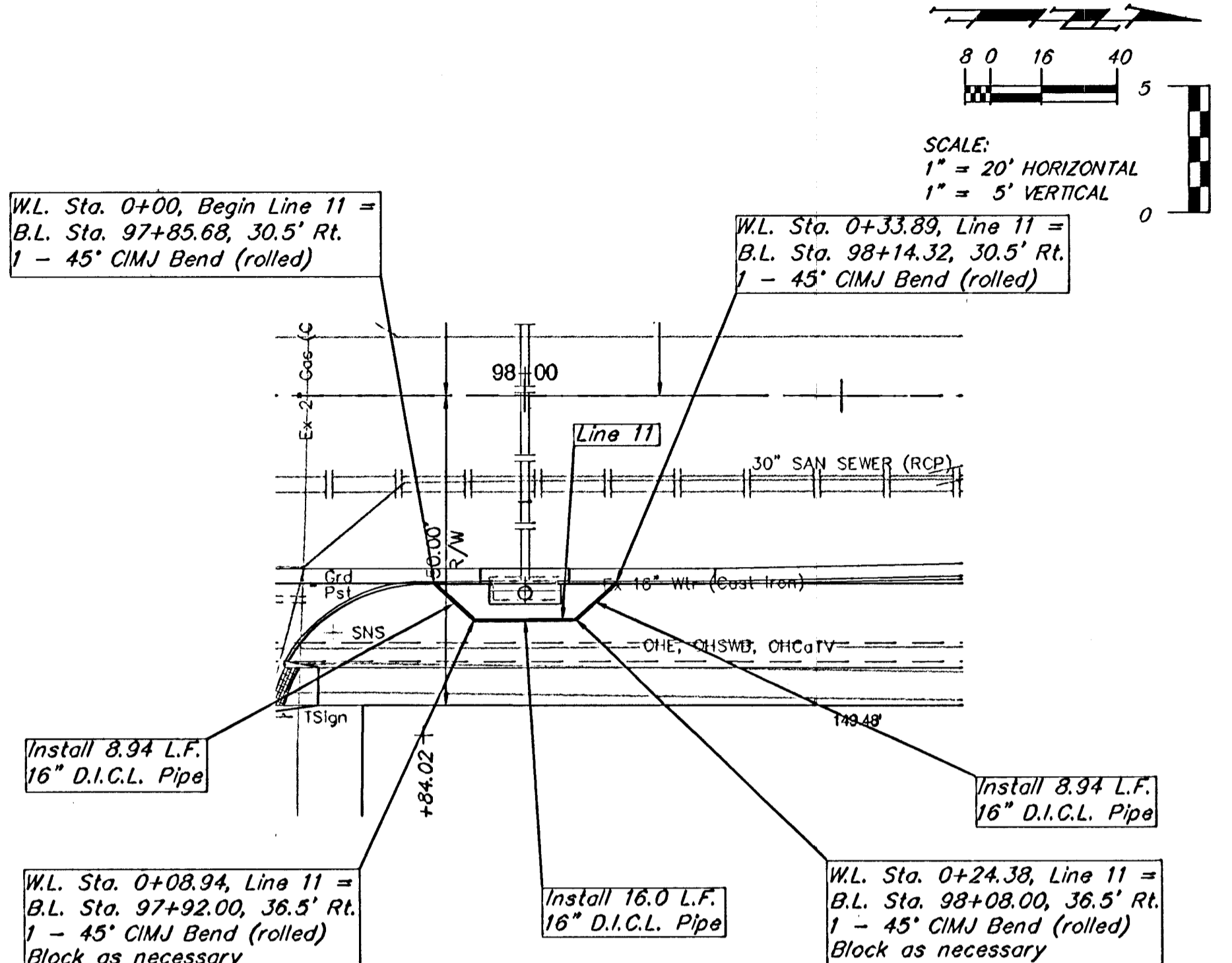
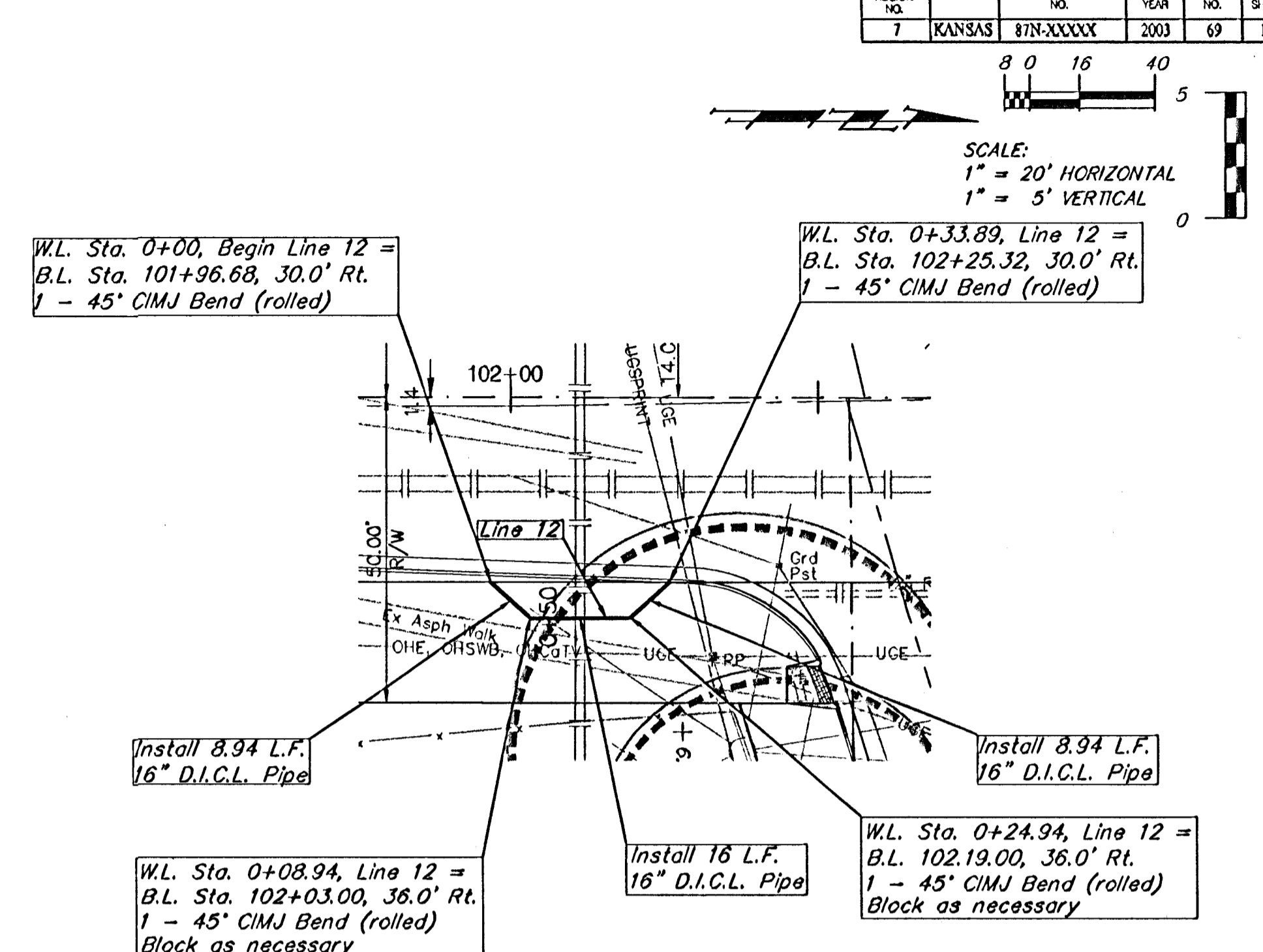


Line 10



Line 11



Line 12

Note:  
Trees/Shrubs to be removed are marked thus:

Note:  
Pavement, Sidewalks, and Etc. To Be Removed Are Indicated By:

85	W.L. Sta. 0+00, Begin Line 10 = B.L. Sta. 94+73.5, 17' Lt. 1 - 45° CIMJ Bend (rolled)	85	85	W.L. Sta. 0+00, Begin Line 11 = B.L. Sta. 97+85.68, 30.5' Rt. 1 - 45° CIMJ Bend (rolled)	85	85	W.L. Sta. 0+00, Begin Line 12 = B.L. Sta. 101+96.68, 30.0' Rt. 1 - 45° CIMJ Bend (rolled)	85
80	W.L. Sta. 0+11, Line 10 = B.L. Sta. 94+79, 24.78' Lt. 1 - 45° CIMJ Bend (rolled)	80	80	W.L. Sta. 0+33.89, Line 11 = B.L. Sta. 98+14.32, 30.5' Rt. 1 - 45° CIMJ Bend (rolled)	80	80	W.L. Sta. 0+33.89, Line 12 = B.L. Sta. 102+25.32, 30.0' Rt. 1 - 45° CIMJ Bend (rolled)	80
75	W.L. Sta. 0+27, Line 10 = B.L. Sta. 94+79, 40.78' Lt. 1 - 45° CIMJ Bend (rolled)	75	75	W.L. Sta. 0+08.94, Line 11 = B.L. Sta. 97+92.00, 36.5' Rt. 1 - 45° CIMJ Bend (rolled)	75	75	W.L. Sta. 0+08.94, Line 12 = B.L. Sta. 102+03.00, 36.0' Rt. 1 - 45° CIMJ Bend (rolled)	75
70	W.L. Sta. 0+27, Line 10 = B.L. Sta. 94+79, 40.78' Lt. 1 - 45° CIMJ Bend (rolled)	70	70	W.L. Sta. 0+24.38, Line 11 = B.L. Sta. 98+08.00, 36.5' Rt. 1 - 45° CIMJ Bend (rolled)	70	70	W.L. Sta. 0+24.94, Line 12 = B.L. Sta. 102+19.00, 36.0' Rt. 1 - 45° CIMJ Bend (rolled)	70
65	W.L. Sta. 0+27, Line 10 = B.L. Sta. 94+79, 40.78' Lt. 1 - 45° CIMJ Bend (rolled)	65	65	W.L. Sta. 0+24.38, Line 11 = B.L. Sta. 98+08.00, 36.5' Rt. 1 - 45° CIMJ Bend (rolled)	65	65	W.L. Sta. 0+24.94, Line 12 = B.L. Sta. 102+19.00, 36.0' Rt. 1 - 45° CIMJ Bend (rolled)	65