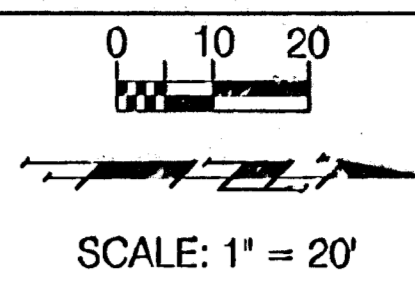
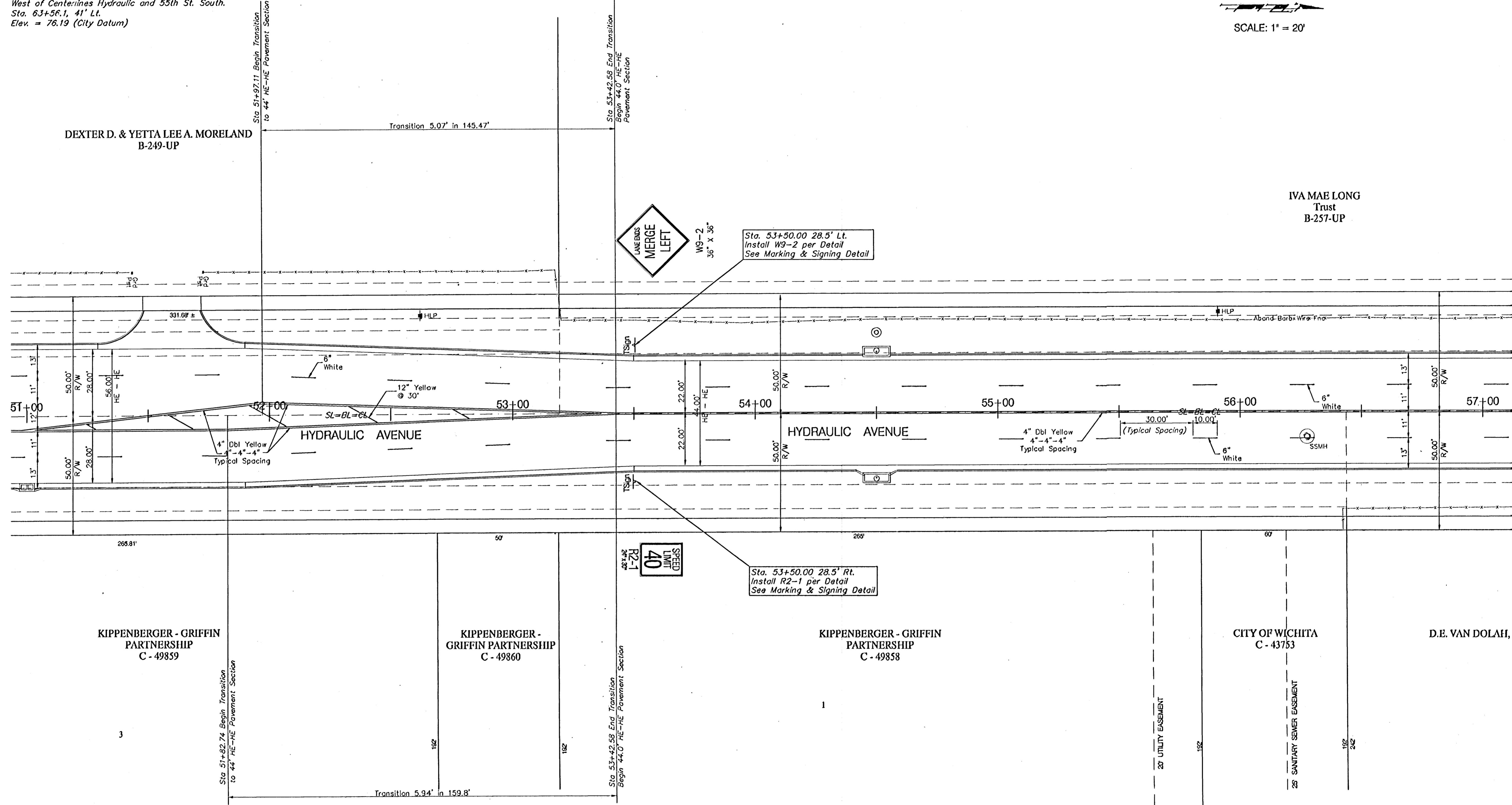


BENCHMARKS:

BM #1 - City of Wichita Bench Mark Disc, 42' North and 41' West of Centerlines Hydraulic and 55th St. South.
Sta. 63+56.1, 41' Lt.
Elev. = 76.19 (City Datum)



FHWA REGION NO.	STATE	PROJECT NO.	FISCAL YEAR	SHEET NO.	TOTAL SHEETS
7	KANSAS	87 N-0303-01	2003	72	143



PROJECT NUMBER 472-83902		SHEET NAME Mark02		ENGINEERING DIRECTORY FAEng/Hydraulic_ph2/Traffic		CAPITAL IMPROVEMENT PROJECT PAVEMENT MARKING PLAN HYDRAULIC AVE PAVING - SOUTH OF 57th STREET SOUTH TO 47th STREET SOUTH		BAUGHMAN COMPANY, P.A. ENGINEERING, SURVEYING, & PLANNING 316-282-7271 • 315 ELLIS • WICHITA, KANSAS 67211		SHEET 72 OF 143
DESIGN JFB	DRAWN TCA	APPROVED JFB/KK	DATE March 04	SCALE 1"=20'	BAUGHMAN NO 99-09-E451					